

PLAN VIEW

1. SEE NOTES ON PAGE 5 OF 5



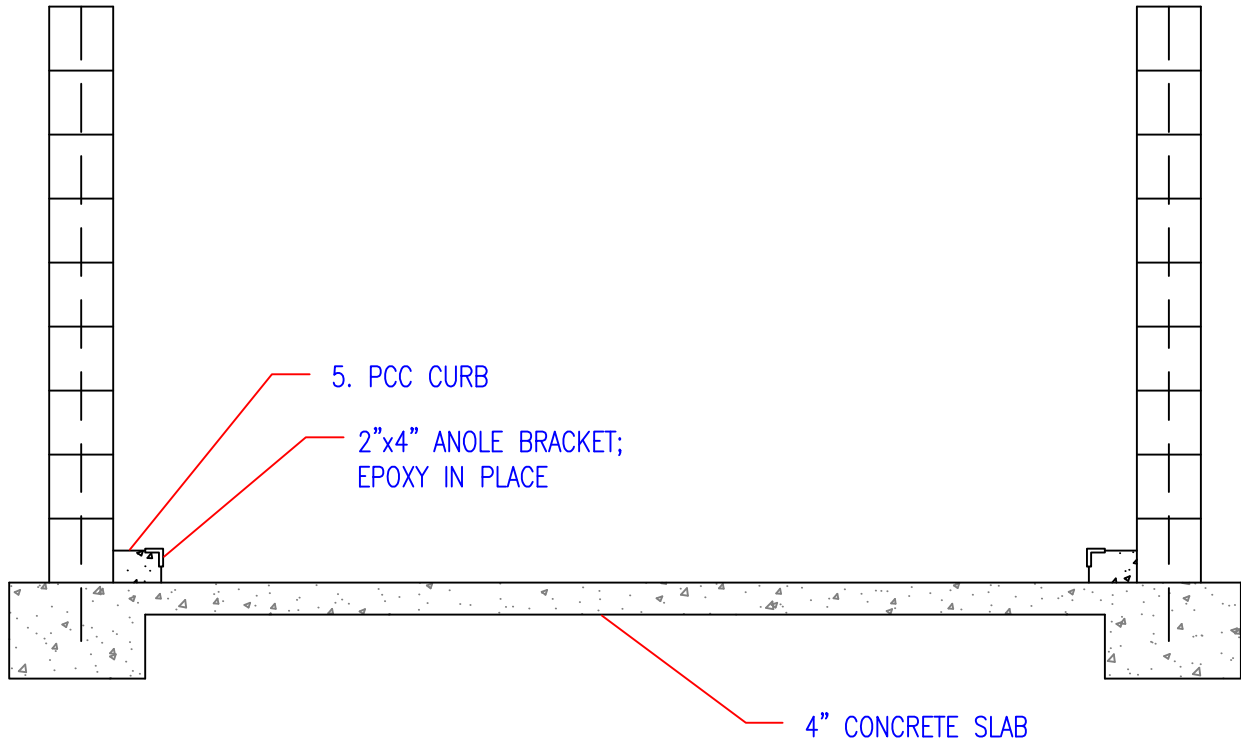
CITY OF OROVILLE  
DEPARTMENT OF PUBLIC WORKS

STANDARD FOR  
TRASH ENCLOSURE

DRAWN BY.  
SG

RICK WALLS, P.E.  
DIRECTOR OF PUBLIC WORKS DEPARTMENT

SHEET  
1 OF 5  
MS-11



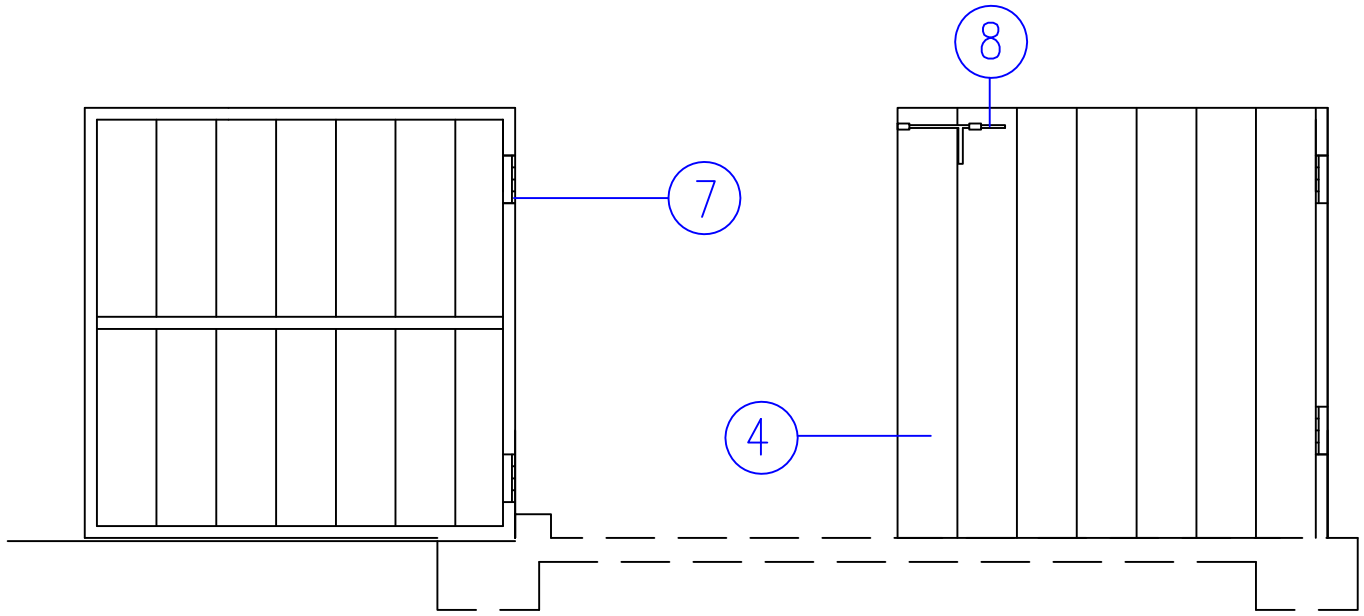
CITY OF OROVILLE  
DEPARTMENT OF PUBLIC WORKS

STANDARD FOR  
TRASH ENCLOSURE

DRAWN BY.  
SG

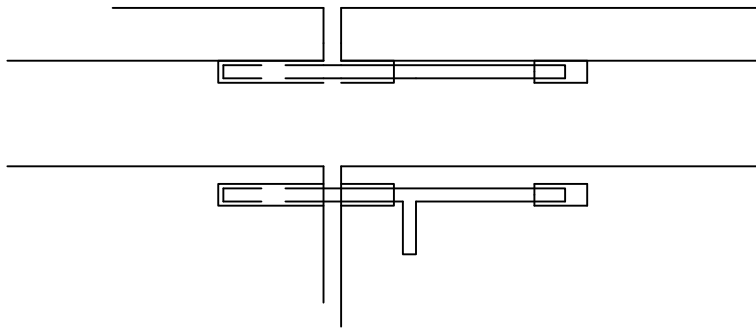
RICK WALLS, P.E.  
DIRECTOR OF PUBLIC WORKS DEPARTMENT

SHEET  
2 OF 5  
MS-11



ELEVATION

SEE NOTE ON PAGE 5 OF 5



LATCH DETAIL



CITY OF OROVILLE  
DEPARTMENT OF PUBLIC WORKS

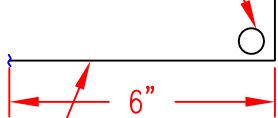
STANDARD FOR  
TRASH ENCLOSURE

DRAWN BY.  
SG

RICK WALLS, P.E.  
DIRECTOR OF PUBLIC WORKS DEPARTMENT

SHEET  
3 OF 5  
MS-11

10. 1-#4 HORZ. BAR; CONTINUOUS ALONG FOOTING



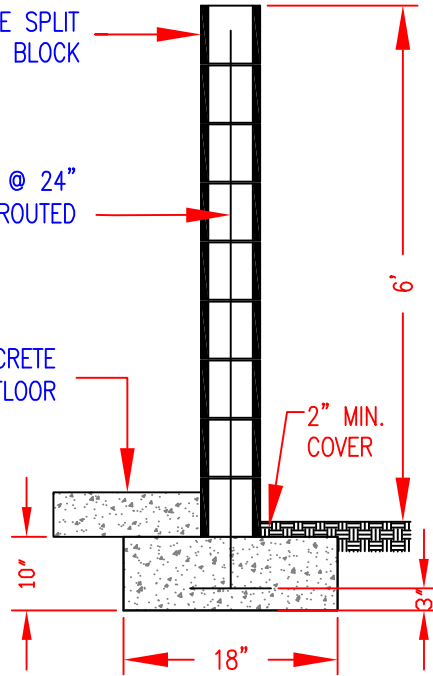
#4 BAR @ 24" O.C.; REVERSE BEND EVERY OTHER BAR

11. #4 VERTICAL BAR @ 24" O.C. FULLY GROUTED

DECORATIVE SPLIT FACE BLOCK

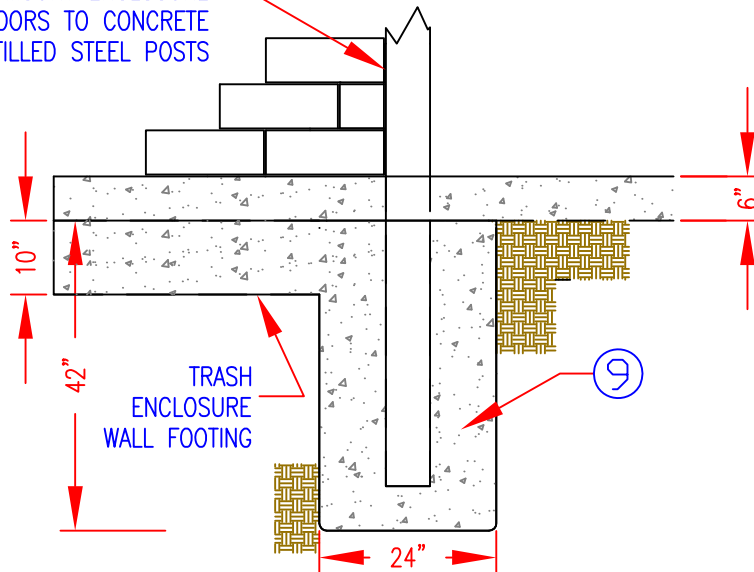
6" CONCRETE SLAB FLOOR

2" MIN. COVER



BLOCK ENCLOSURE

3. MOUNT ENCLOSURE DOORS TO CONCRETE FILLED STEEL POSTS



DOOR FOOTING



CITY OF OROVILLE  
DEPARTMENT OF PUBLIC WORKS

STANDARD FOR  
TRASH ENCLOSURE

DRAWN BY.  
SG

RICK WALLS, P.E.  
DIRECTOR OF PUBLIC WORKS DEPARTMENT

SHEET  
4 OF 5  
MS-11

NOTES:

1. 4" PCC FOUNDATION, EXTENDING 4" BEYOND ENCLOSURE WALLS, OVER 95% COMPACTED BASE.
2. 8"x8"x16", 6' HIGH SPLIT BLOCK MASONRY WALLS COORDINATED TO COMPLEMENT SURROUNDING ARCHITECTURE.
3. 6" SQUARE  $\frac{3}{16}$ " THICK STEEL JAMB TUBES, CONCRETE FILLED. 2" CLEARANCE BETWEEN TUBE AND WALLS.
4. 16 GA. RIBBED METAL GATES WITH 2"x2"x  $\frac{1}{4}$ " STEEL ANGLE IRON FRAME AND DIAGONAL BRACING. CONTINUOUS WELD ALL JOINTS.
5. 6"x6" PCC CURB.
6. 6" THICK PCC LOADING PAD (SLAB ON GRADE) OVER 95% COMPACTED BASE, 4% MAXIMUM SLOPE.
7. METAL HINGE, CONTINUOUSLY WELDED TO GATE AND JAMB TUBE.
8. INSTALL WELDED UPPER MOUNT LATCHING ASSEMBLY PER DETAIL.
9. 48" DEEP BY 24" DIAMETER PCC FOOTING FOR GATE POSTS.
10. #4 BAR 24" O/C EACH WAY.
11. 1 #4 BAR TOP CORD.
12. #4 BAR CONTINUOUS IN 18"-WIDE BY 10"-DEEP FOOTING UNDER WALLS AND GATE OPENINGS.
13. PEDESTRIAN ACCESS IS REQUIRED IF IN RESIDENTIAL OR MULTI-TENANT AREAS. CONSULT PLANNING DEPARTMENT FOR REQUIREMENTS.



CITY OF OROVILLE  
DEPARTMENT OF PUBLIC WORKS

STANDARD FOR  
TRASH ENCLOSURE  
KEYNOTES AND GEN. NOTES

DRAWN BY.  
SG

RICK WALLS, P.E.  
DIRECTOR OF PUBLIC WORKS DEPARTMENT

SHEET  
5 OF 5  
MS-11