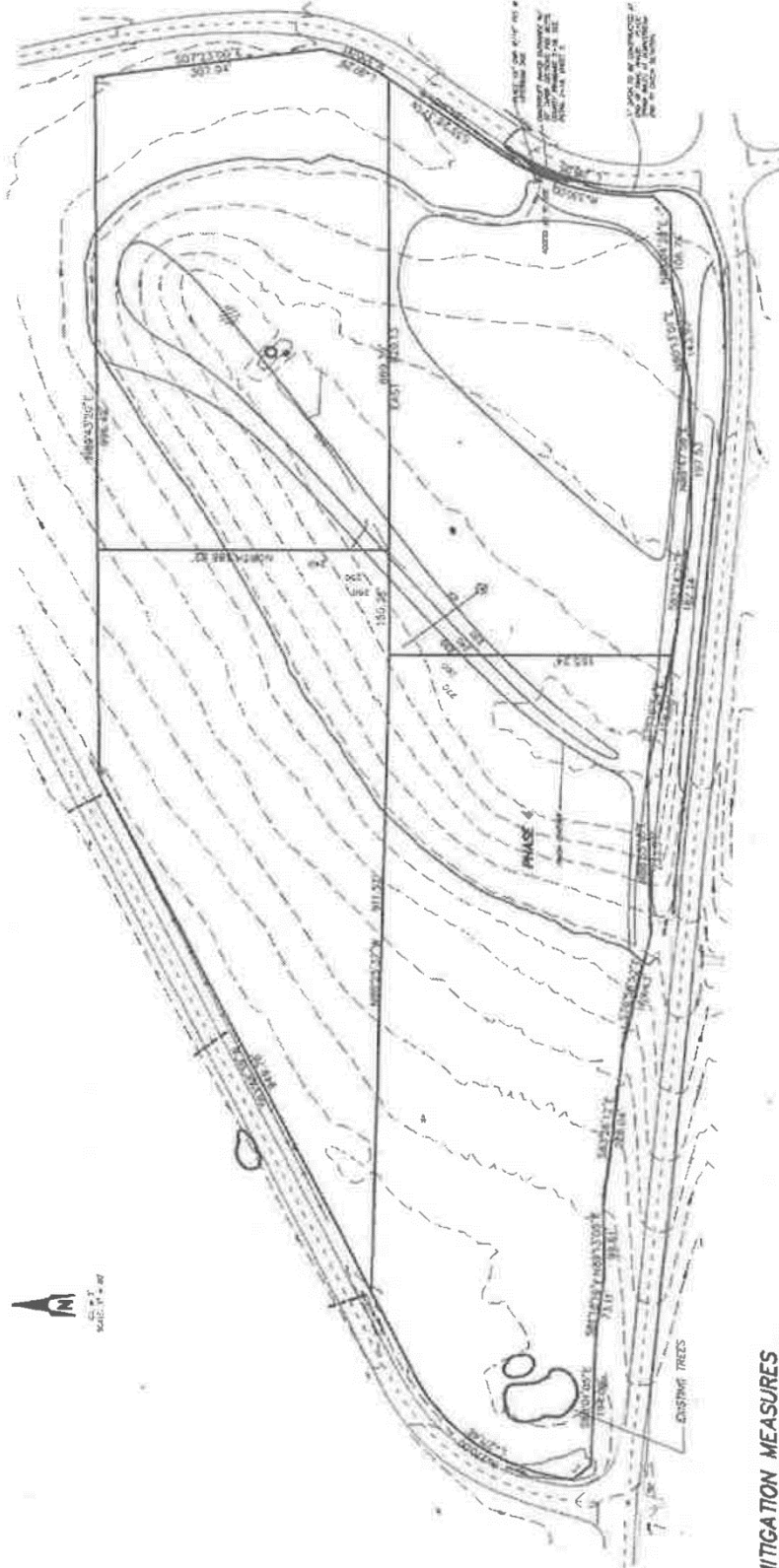


VICINITY MAP



**MITIGATION MEASURES**

1. THE PROPOSED MINING OPERATIONS WILL BE CONDUCTED IN ACCORDANCE WITH THE MITIGATION MEASURES LISTED BELOW. THESE MEASURES WILL BE IMPLEMENTED IN ACCORDANCE WITH THE MITIGATION PLAN AND THE MITIGATION MONITORING PLAN.
2. THE MITIGATION MEASURES WILL BE IMPLEMENTED IN ACCORDANCE WITH THE MITIGATION PLAN AND THE MITIGATION MONITORING PLAN.
3. THE MITIGATION MEASURES WILL BE IMPLEMENTED IN ACCORDANCE WITH THE MITIGATION PLAN AND THE MITIGATION MONITORING PLAN.
4. THE MITIGATION MEASURES WILL BE IMPLEMENTED IN ACCORDANCE WITH THE MITIGATION PLAN AND THE MITIGATION MONITORING PLAN.
5. THE MITIGATION MEASURES WILL BE IMPLEMENTED IN ACCORDANCE WITH THE MITIGATION PLAN AND THE MITIGATION MONITORING PLAN.
6. THE MITIGATION MEASURES WILL BE IMPLEMENTED IN ACCORDANCE WITH THE MITIGATION PLAN AND THE MITIGATION MONITORING PLAN.
7. THE MITIGATION MEASURES WILL BE IMPLEMENTED IN ACCORDANCE WITH THE MITIGATION PLAN AND THE MITIGATION MONITORING PLAN.
8. THE MITIGATION MEASURES WILL BE IMPLEMENTED IN ACCORDANCE WITH THE MITIGATION PLAN AND THE MITIGATION MONITORING PLAN.
9. THE MITIGATION MEASURES WILL BE IMPLEMENTED IN ACCORDANCE WITH THE MITIGATION PLAN AND THE MITIGATION MONITORING PLAN.
10. THE MITIGATION MEASURES WILL BE IMPLEMENTED IN ACCORDANCE WITH THE MITIGATION PLAN AND THE MITIGATION MONITORING PLAN.

**ATTACHMENT 6**

1. THIS ATTACHMENT IS FOR THE PURPOSES OF DELINEATING THE PHASE 4 OPERATIONS AND IDENTIFYING THE MITIGATION MEASURES TO BE IMPLEMENTED IN ACCORDANCE WITH THE MITIGATION PLAN AND THE MITIGATION MONITORING PLAN.
2. PHASE 4 OPERATIONS AND IDENTIFYING THE MITIGATION MEASURES TO BE IMPLEMENTED IN ACCORDANCE WITH THE MITIGATION PLAN AND THE MITIGATION MONITORING PLAN.
3. PHASE 4 OPERATIONS AND IDENTIFYING THE MITIGATION MEASURES TO BE IMPLEMENTED IN ACCORDANCE WITH THE MITIGATION PLAN AND THE MITIGATION MONITORING PLAN.
4. PHASE 4 OPERATIONS AND IDENTIFYING THE MITIGATION MEASURES TO BE IMPLEMENTED IN ACCORDANCE WITH THE MITIGATION PLAN AND THE MITIGATION MONITORING PLAN.

	DRAWN BY	CHECKED BY	DATE	SCALE	SHEET	PROJECT
	FORBES	FORBES		5 OF 6	0	99040
<b>MINING OPERATION FEATURES—PHASE 4</b> <b>RON HARMON RECLAMATION PLAN</b> <b>OROVILLE, CALIFORNIA 95965</b>						
 <b>CLARK-HART-BROWN &amp; ASSOCIATES, INC.</b> 2110 N. ST. STE. 107 OROVILLE, CA 95968 TEL: (530) 534-1817 FAX: (530) 534-1818						