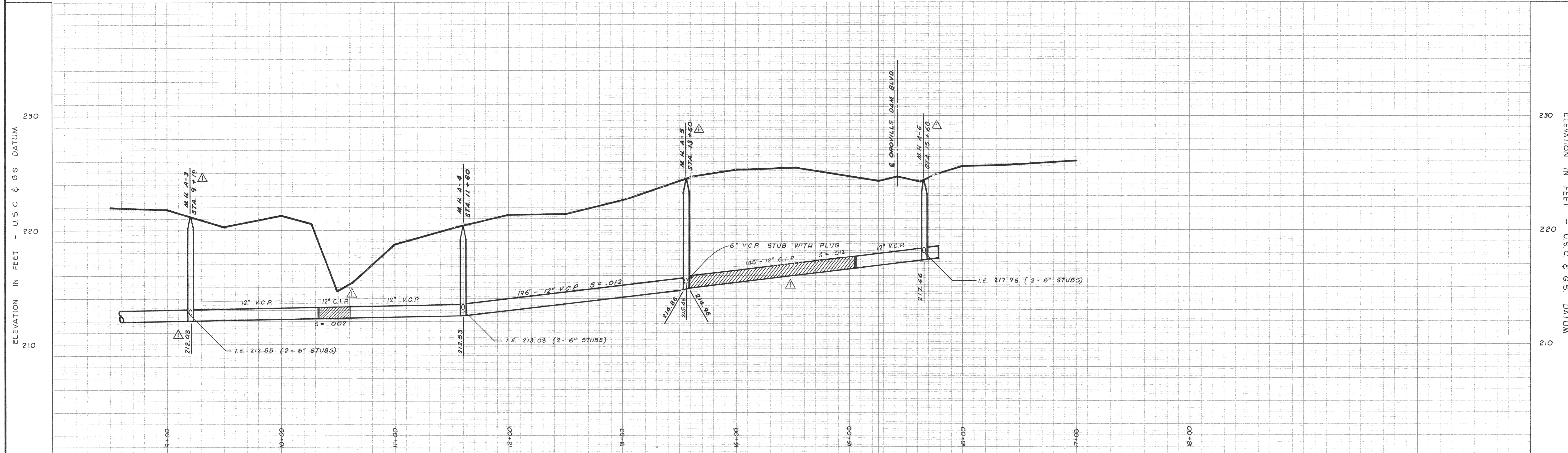


BENCH MARK
SOUTHEAST CORNER OLIVE HIGHWAY AND OROVILLE - DAM BOULEVARD. IRON PIN IN CURB. ELEVATION 233.87 (U.S.C. & G.S. DATUM)

Scales:
Horizontal: 1" = 40'
Vertical: 1" = 4'

NOTE:
ALL STUB SEWERS AT MANHOLES TO BE 2'-0" LONG UNLESS OTHERWISE DIMENSIONED.



DEWANTE AND STOWELL
SANITARY AND CIVIL ENGINEERS - SACRAMENTO, CALIFORNIA.

AS BUILT	MARCH, '64	REVISED MANHOLE STATIONING, ANGLE DEFLECTIONS, & INVERT ELEVATIONS INDICATED LOCATIONS OF CAST IRON PIPE.	H.N.H. E.R.S.	SUBMITTED
				Edwin R. Stowell
				APPROVED:
				Michael Zamora
				CITY ENGINEER, R.C.E. 11440

CITY OF OROVILLE
BUTTE COUNTY CALIFORNIA
DRY CREEK SEWER MAIN EXTENSION
PLAN AND PROFILE

DATE:	MAY, 1963	SHEET NO.	3
CHKD:	DRWN:	OF	4
E.R.S.	H.N.H. R.A.B.		