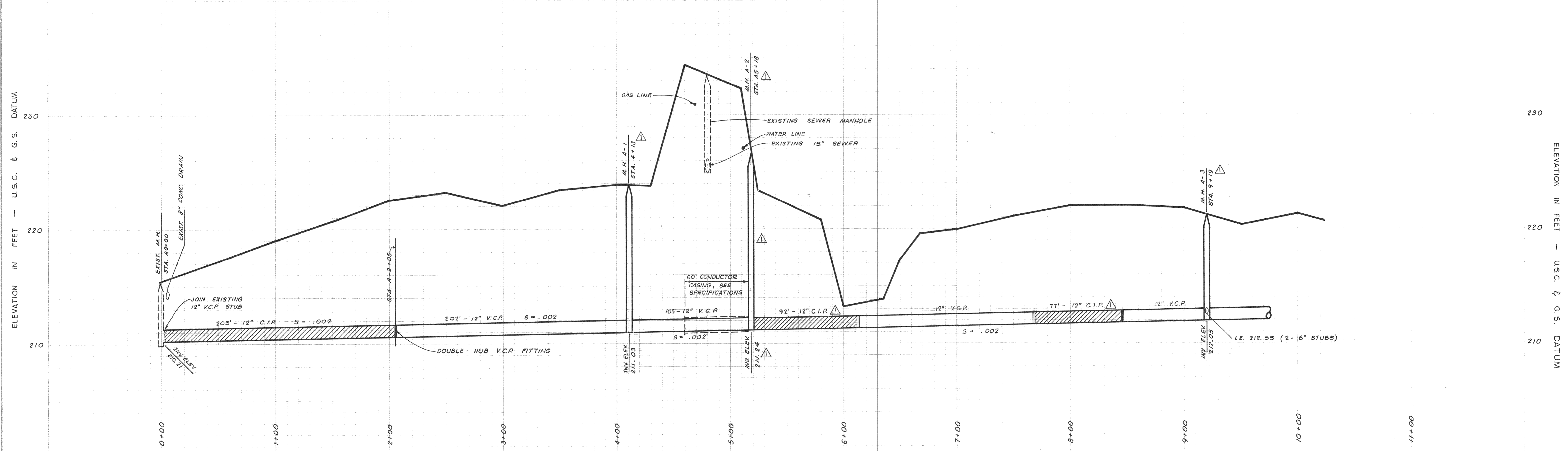


BENCH MARK
 NORTHWEST CORNER MITCHELL AVE.
 AND WASHINGTON AVE. IRON PIN
 IN CURB, ELEVATION 235.37 (U.S.C.
 & G.S. DATUM)

SCALES:
 HORIZONTAL: 1" = 40'
 VERTICAL: 1" = 4'



DEWANTE AND STOWELL
 SANITARY AND CIVIL ENGINEERS - SACRAMENTO, CALIFORNIA

REVISION	DATE	DESCRIPTION	BY	APP.
AS BUILT	MARCH, '64	REVISED MANHOLE STATIONING, ANGLE DEFLECTIONS, INVERT ELEV'S, AND CONDUCTOR CASING. DELETED WORKING & SEWER EASEMENTS FROM STA. 45+18 TO 49+19. INDICATED LOCATIONS OF CAST IRON PIPE AND LATERALS.	H.N.H. ERS.	APPROVED
				Edwin R. Stovell
				Michael Zamora
				CITY ENGINEER, R.C.E. 11440

CITY OF OROVILLE
 BUTTE COUNTY, CALIFORNIA
 DRY CREEK SEWER MAIN EXTENSION
PLAN AND PROFILE

MAY 1963
 E.R.S. H.N.H. R.A.B.
 2
 4