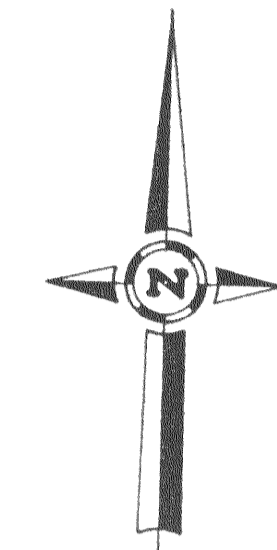
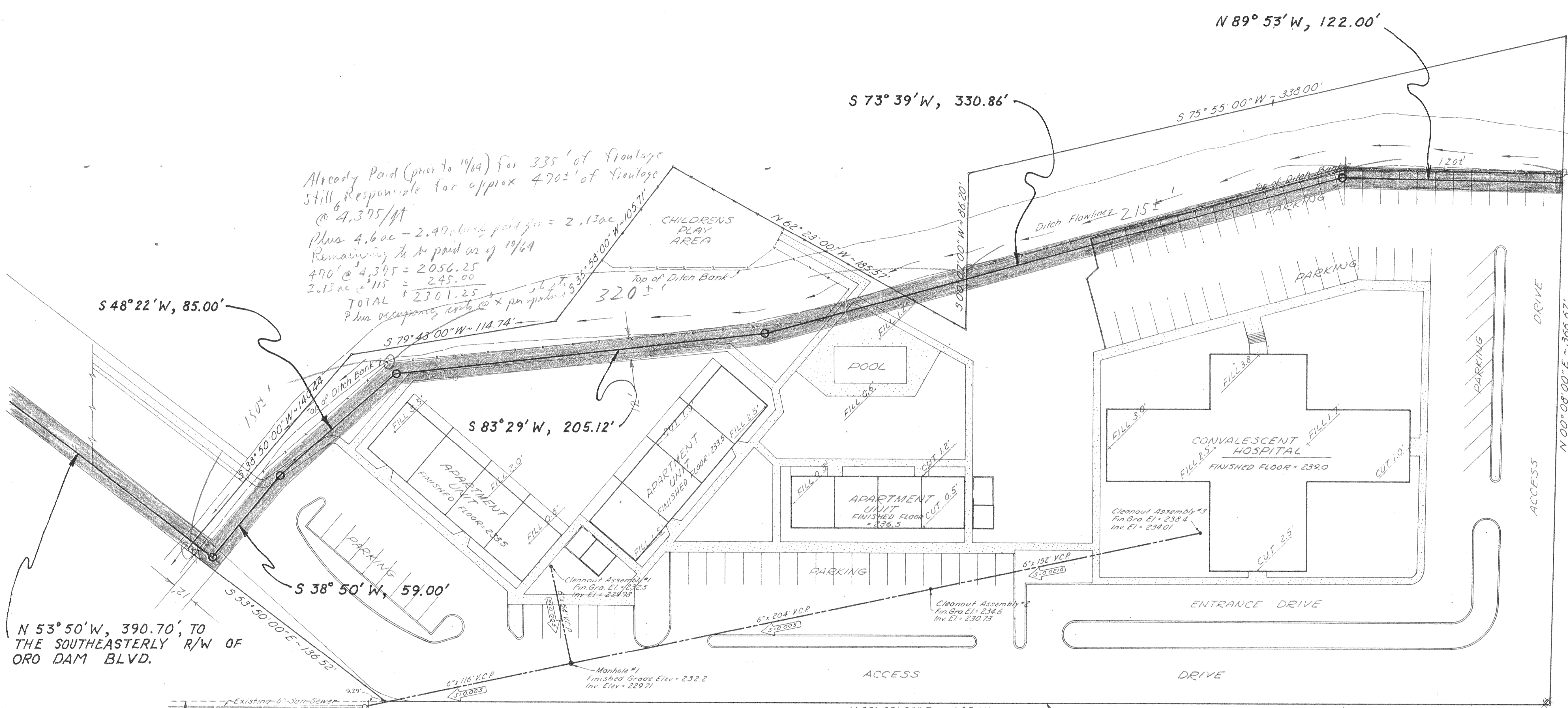


Already Paid prior to 10/64
 2.47 ac @ 115 = 284.05
 335 ft @ 4.375 = 1465.63
 Plus Units Charge 775.00
 \$ 2524.68

Already Paid (prior to 10/64) for 335' of frontage
 Still Responsible for approx 470±' of frontage
 @ 4.375/ft
 Plus 4.6 ac - 2.47 ac already paid for = 2.13 ac
 Remaining to be paid as of 10/64
 470' @ 4.375 = 2056.25
 2.13 ac @ 115 = 245.00
 TOTAL \$ 2301.25
 Plus occupancy rate x per apartment



SCALE: 1" = 30'



N 53° 50' W, 390.70', TO THE SOUTHEASTERLY R/W OF ORO DAM BLVD.

OROVILLE MEDICAL ARTS CENTER

PROPOSED SANITARY SEWER LAYOUT		
~ for ~		
PROPOSED APARTMENTS & CONVALESCENT HOSPITAL		
OROVILLE CALIFORNIA		
DRAWN	GILLETT-HARRIS	AND ASSOCIATES CONSULTING CIVIL ENGINEERS YUBA CITY AUBURN CALIFORNIA
CHKD.		
APPR.		
REV.		
REV.		
CONTOUR INTERVALS	JOB No. 2138	
SCALE 1" = 30'	TOTAL SHEETS SHEET NO.	