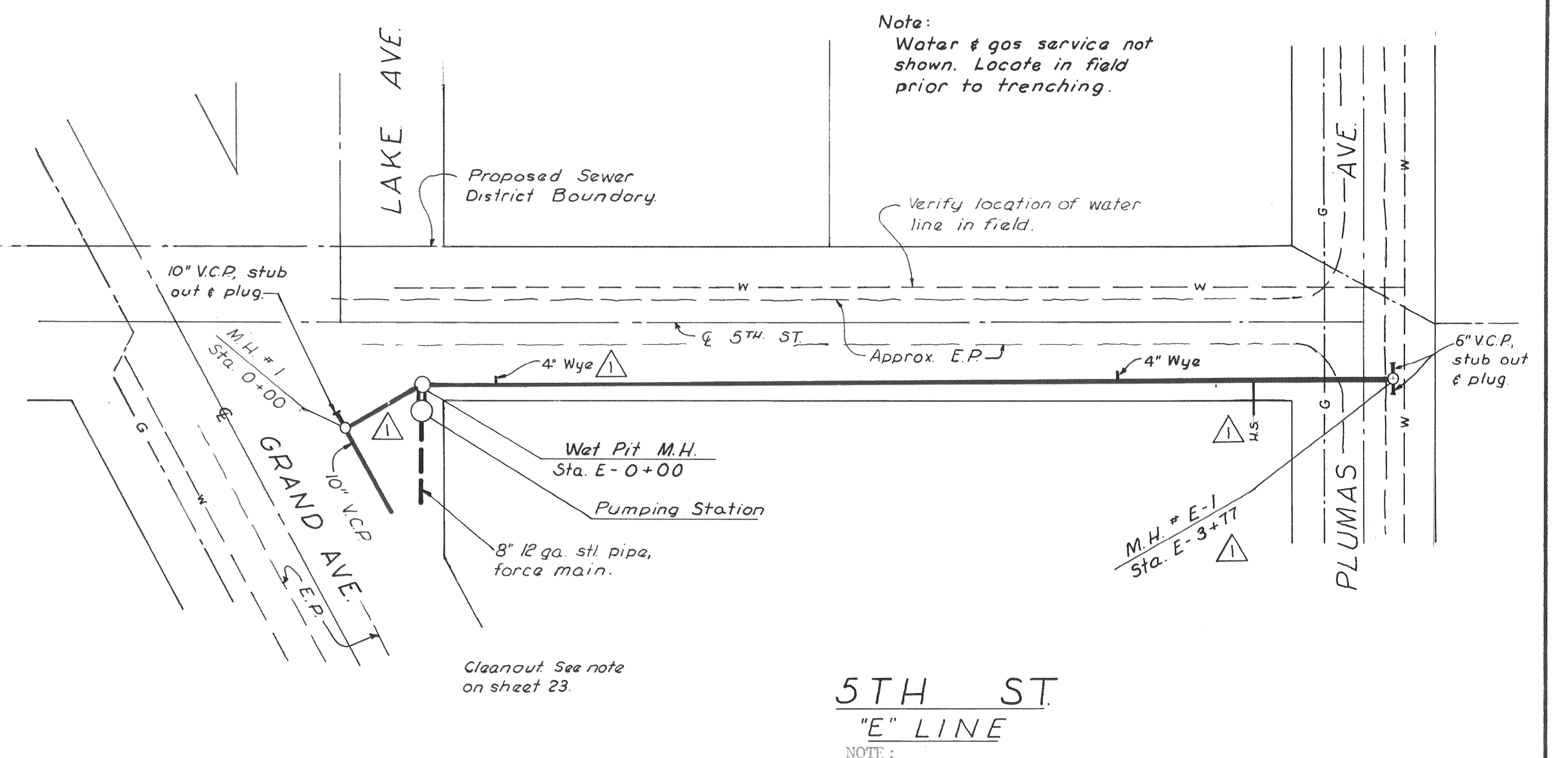
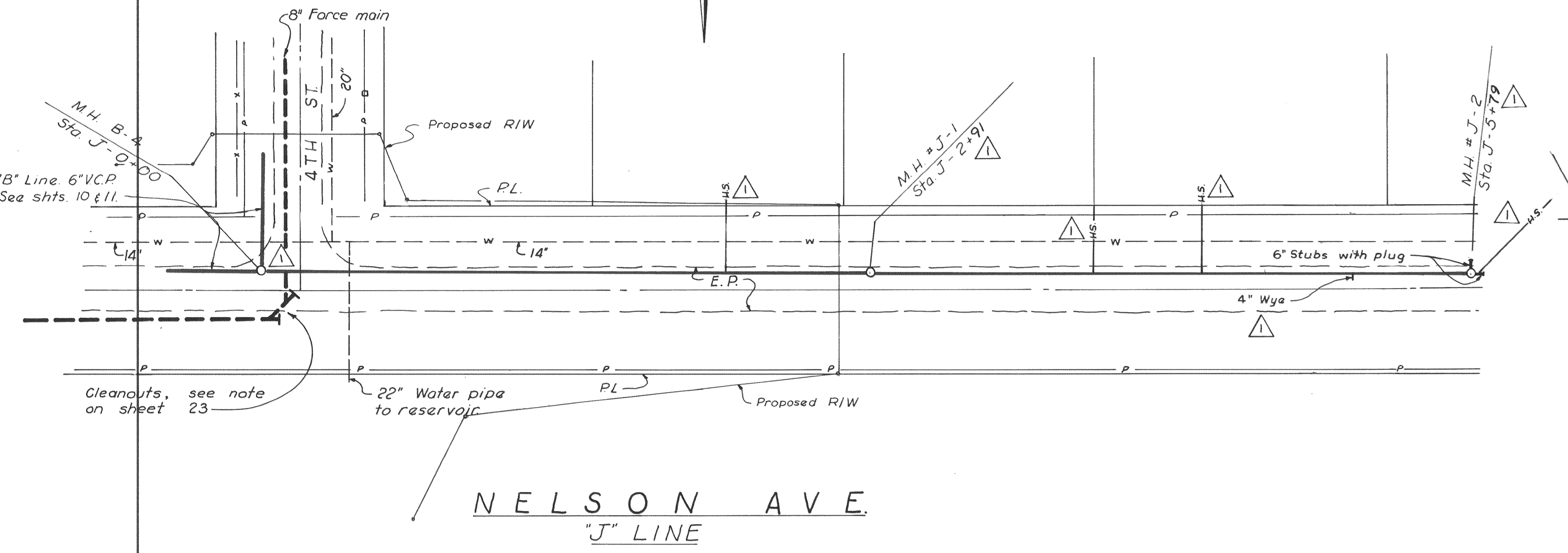
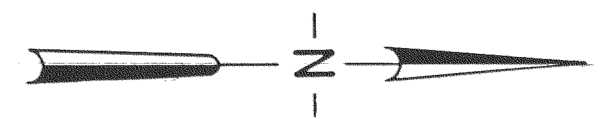


Note:
Water & gas service not shown. Locate in field prior to trenching.



NOTE: Wyes are marked in field at property lines by a 2" x 2" redwood stake.

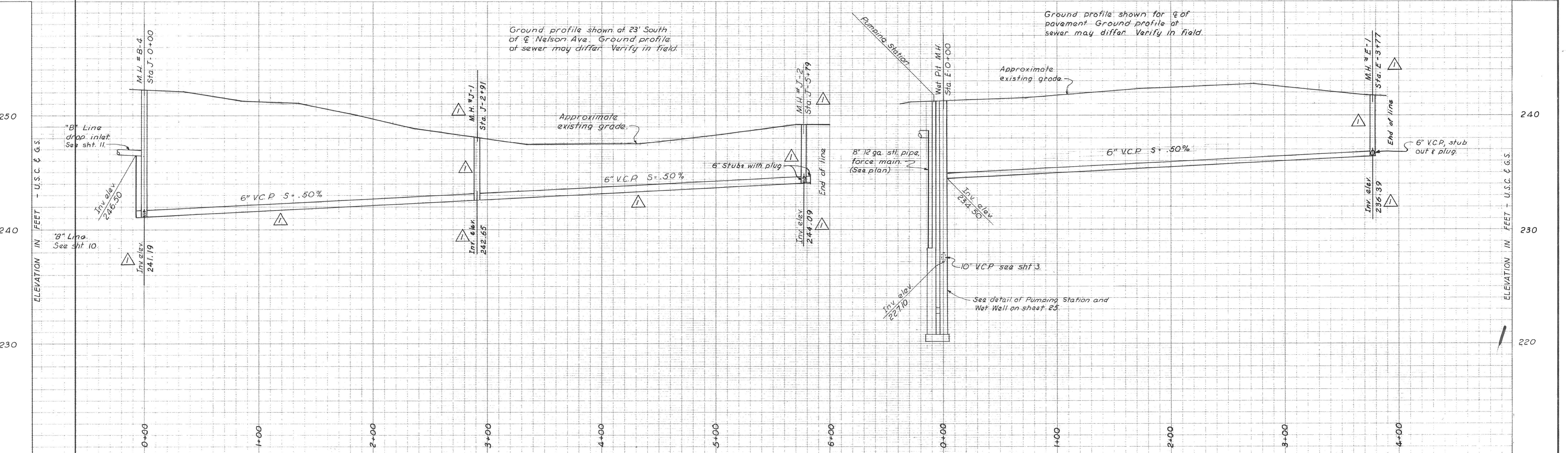
Scales:
Horizontal: 1" = 40'-0"
Vertical: 1" = 4'-0"

**5TH ST
"E" LINE**

NOTE:
As-Built invert elevations are not field surveyed. Where manholes were moved from original locations or where manholes were added, inverts were calculated using slopes from original plans and distances as furnished for As-Built.

Scales:
Horizontal: 1" = 40'-0"
Vertical: 1" = 4'-0"

"AS - BUILT"



DEWANTE AND STOWELL
SANITARY AND CIVIL ENGINEERS - SACRAMENTO, CALIFORNIA

REVISION	DATE	DESCRIPTION	BY	APPD.
△ AB	8/26/63	Revised manhole stationing, location, and invert elevations	HNH/RNE	

SUBMITTED
Edwin R. Stowell
APPROVED
A. M. [Signature]

CITY OF OROVILLE
OROVILLE, CALIFORNIA
MUNICIPAL SEWER DISTRICT NO. 1
PLAN AND PROFILE - "J" & "E" LINE

DATE: March 1962	SHEET NO. 20
CHKD: E.R.S.	DRWN: R.A.B.
OF 25	