

NOTE: Wyes are marked in field at property lines by a 2" x 2" redwood stake.

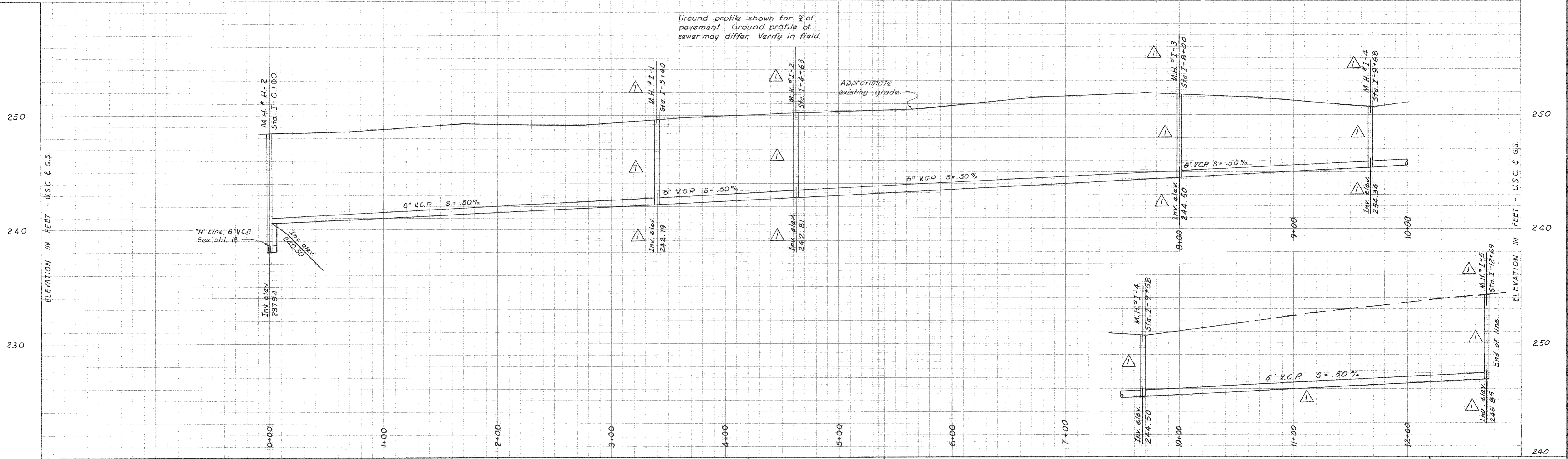
Note: Water & gas service not shown. Locate in field prior to trenching.

NOTE:
As-Built invert elevations are not field surveyed. Where manholes were moved from original locations or where manholes were added, inverts were calculated using slopes from original plans and distances as furnished for As-Built.

"AS - BUILT"

Scale:
Horizontal: 1" = 40'-0"
Vertical: 1" = 4'-0"

O R O V I E W D R
"1" LINE



Ground profile shown for ϕ of pavement. Ground profile of sewer may differ. Verify in field.

Approximate existing grade.

DEWANTE AND STOWELL
SANITARY AND CIVIL ENGINEERS - SACRAMENTO, CALIFORNIA

REVISION	DATE	DESCRIPTION	BY	APPD
△ AB	8/26/63	Revised manhole stationing, location, and invert elevations	HNR	ERS

SUBMITTED:
Edwin R. Stowell
APPROVED:
[Signature]

CITY OF OROVILLE
OROVILLE, CALIFORNIA
MUNICIPAL SEWER DISTRICT NO. 1 SANITARY SEWER PROJECT
PLAN AND PROFILE - "1" LINE

DATE	MARCH 1962	SHEET NO	19
CHKD	DRWN	OF 25	
ERS	R.A.B.		

SS 216