

DEL ORO AVE.
"D" LINE

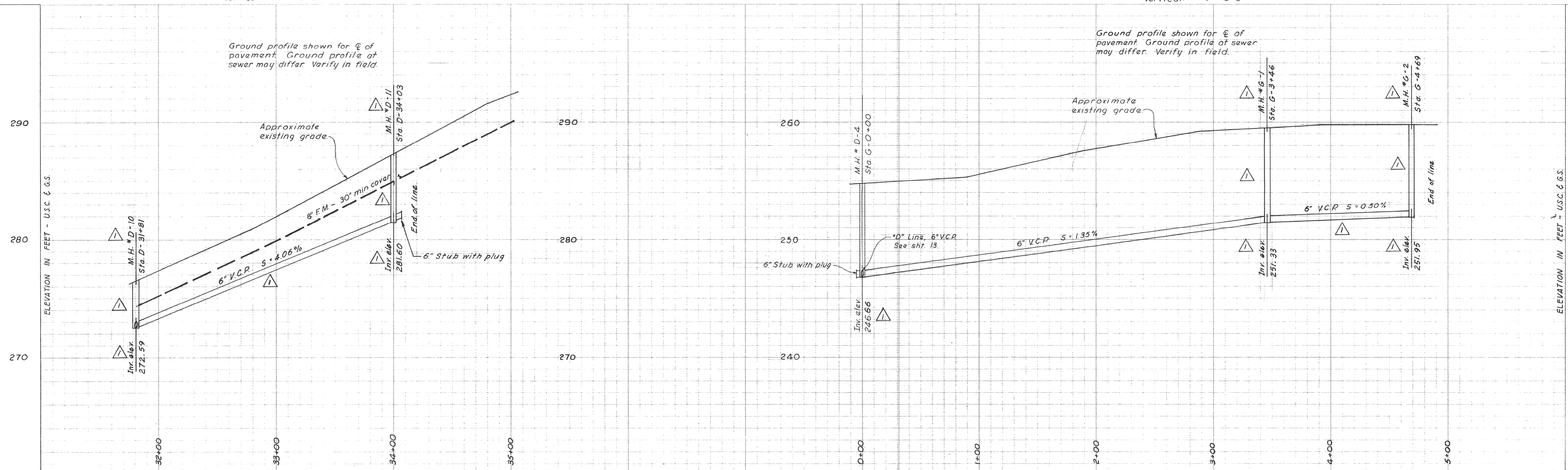
GAYLOR AVE.
"G" LINE

AS BUILT

NOTE: Wyes are marked in field at property lines by a 2" x 2" redwood stake.

Scales:
Horizontal: 1" = 40'-0"
Vertical: 1" = 4'-0"

NOTE:
As-Built invert elevations are not field surveyed. Where manholes were moved from original locations or where manholes were added, inverts were calculated using slopes from original plans and distances as furnished for As-Built.



Ground profile shown for ϕ of pavement. Ground profile at sewer may differ. Verify in field.

Ground profile shown for ϕ of pavement. Ground profile at sewer may differ. Verify in field.

DEWANTE AND STOWELL
SANITARY AND CIVIL ENGINEERS - SACRAMENTO, CALIFORNIA

REVISION	DATE	DESCRIPTION	BY	APPD.
AB	8/26/63	Revised manhole stationing, location, and invert elevations.	RNH	ERS

SUBMITTED: *Edwin R. Stowell*
APPROVED: *[Signature]*

CITY OF OROVILLE
OROVILLE, CALIFORNIA
MUNICIPAL SEWER DISTRICT NO. 1
SANITARY SEWER PROJECT
PLAN AND PROFILE - "D" & "G" LINE

DATE	SHEET NO.
March 1962	16
CHKD	DRWN
E.R.S.	R.A.B.

OF 25