

Note:
Water & gas service not shown. Locate in field prior to trenching.

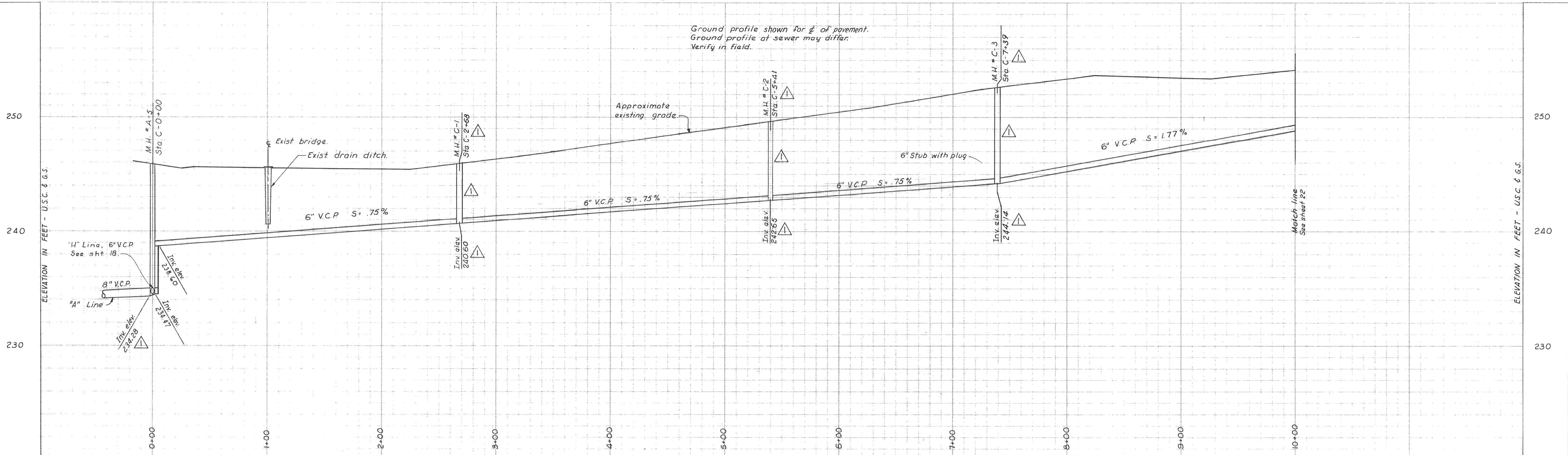
2ND ST.
"C" LINE

NOTE: Wyes are marked in field at property lines by a 2" x 2" redwood stake.

Scales:
Horizontal: 1" = 40'-0"
Vertical: 1" = 4'-0"

NOTE:
As-Built invert elevations are not field surveyed. Where manholes were moved from original locations or where manholes were added, Inverts were calculated using slopes from original plans and distances as furnished for As-Built.

"AS BUILT"



Ground profile shown for $\frac{1}{2}$ " of pavement.
Ground profile at sewer may differ.
Verify in field.

DEWANTE AND STOWELL
SANITARY AND CIVIL ENGINEERS - SACRAMENTO, CALIFORNIA

REVISION	DATE	DESCRIPTION	BY	APPD
AB	8/26/63	Revised manhole stationing, location, and invert elevations	HNR	ERS

SUBMITTED:
Edwin R. Stowell
APPROVED:
R. M. Carpenter

CITY OF OROVILLE
OROVILLE, CALIFORNIA
MUNICIPAL SEWER DISTRICT NO. 1 SANITARY SEWER PROJECT
PLAN AND PROFILE - "C" LINE

DATE	MARCH 1962	SHEET NO.	12
CHKD	DRWN	OF 25	
ERS	R.A.B.		

SS 209