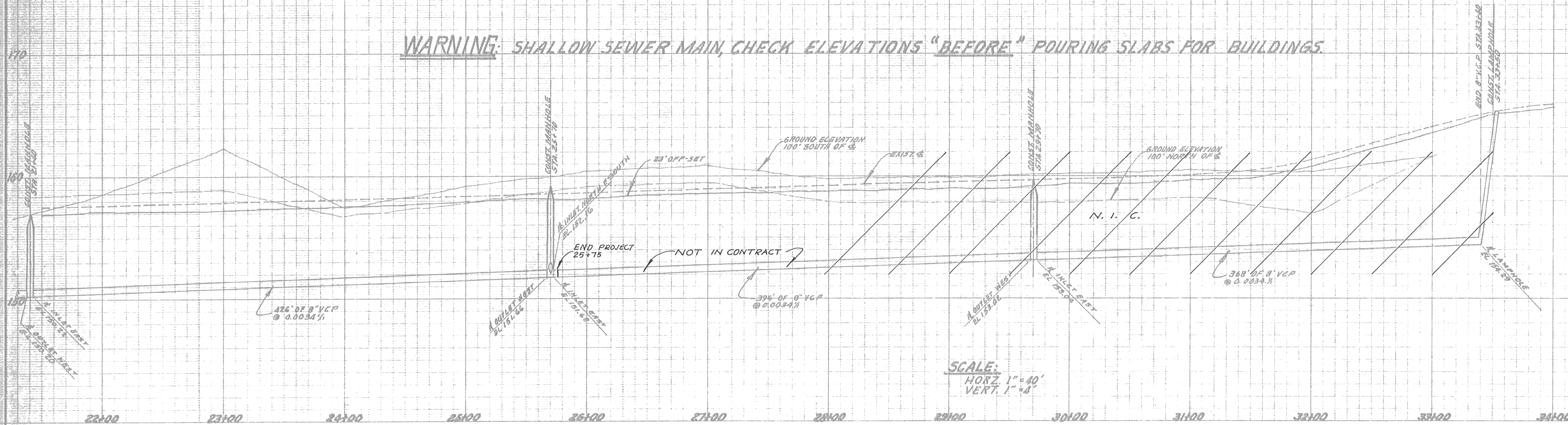


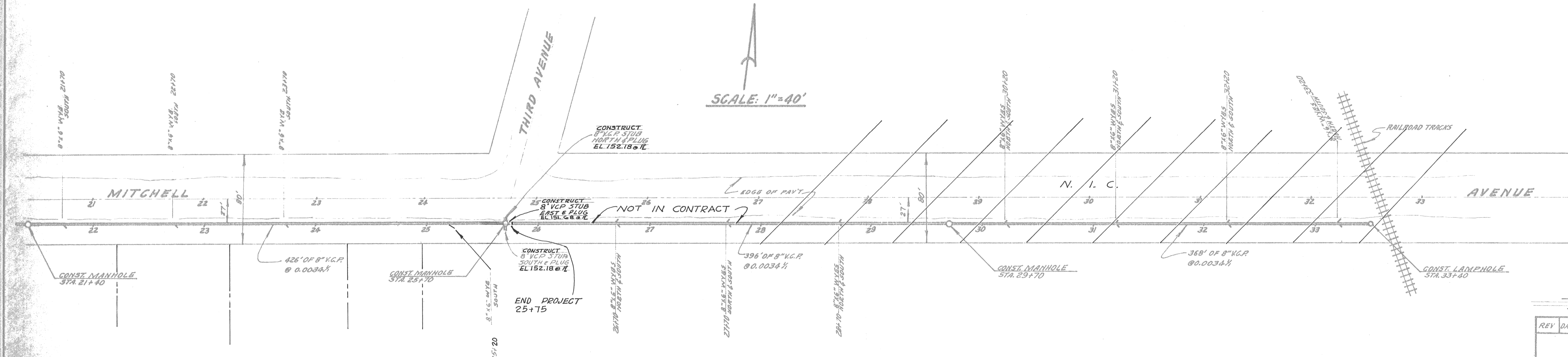
**BENCH MARK**  
 NAIL IN UP NORTHEAST CORNER OF  
 FIFTH AVENUE AND OROVILLE-DAN BLVD  
 ELEVATION 156.75

**WARNING: SHALLOW SEWER MAIN, CHECK ELEVATIONS "BEFORE" POURING SLABS FOR BUILDINGS.**



SCALE:  
 HORIZ. 1" = 40'  
 VERT. 1" = 8'

**NOTE:**  
 ALL WORK SHALL BE IN ACCORDANCE  
 WITH THE CITY OF OROVILLE  
 STANDARDS AND SPECIFICATIONS.



REV	DATE	DESCRIPTION	APPD BY
NEVER CONSTRUCTED			
CITY of OROVILLE			
8" VCP SANITARY SEWER IN MITCHELL AVE FROM FIFTH AVE TO 822 FEET EASTERLY			
DRAWN BY	APPROVED		DATE
GS	<i>William J. ...</i>		7/3/6
CHECKED BY	CITY ENGINEER		REVISION
<i>[Signature]</i>			
SS 229			2 of 2