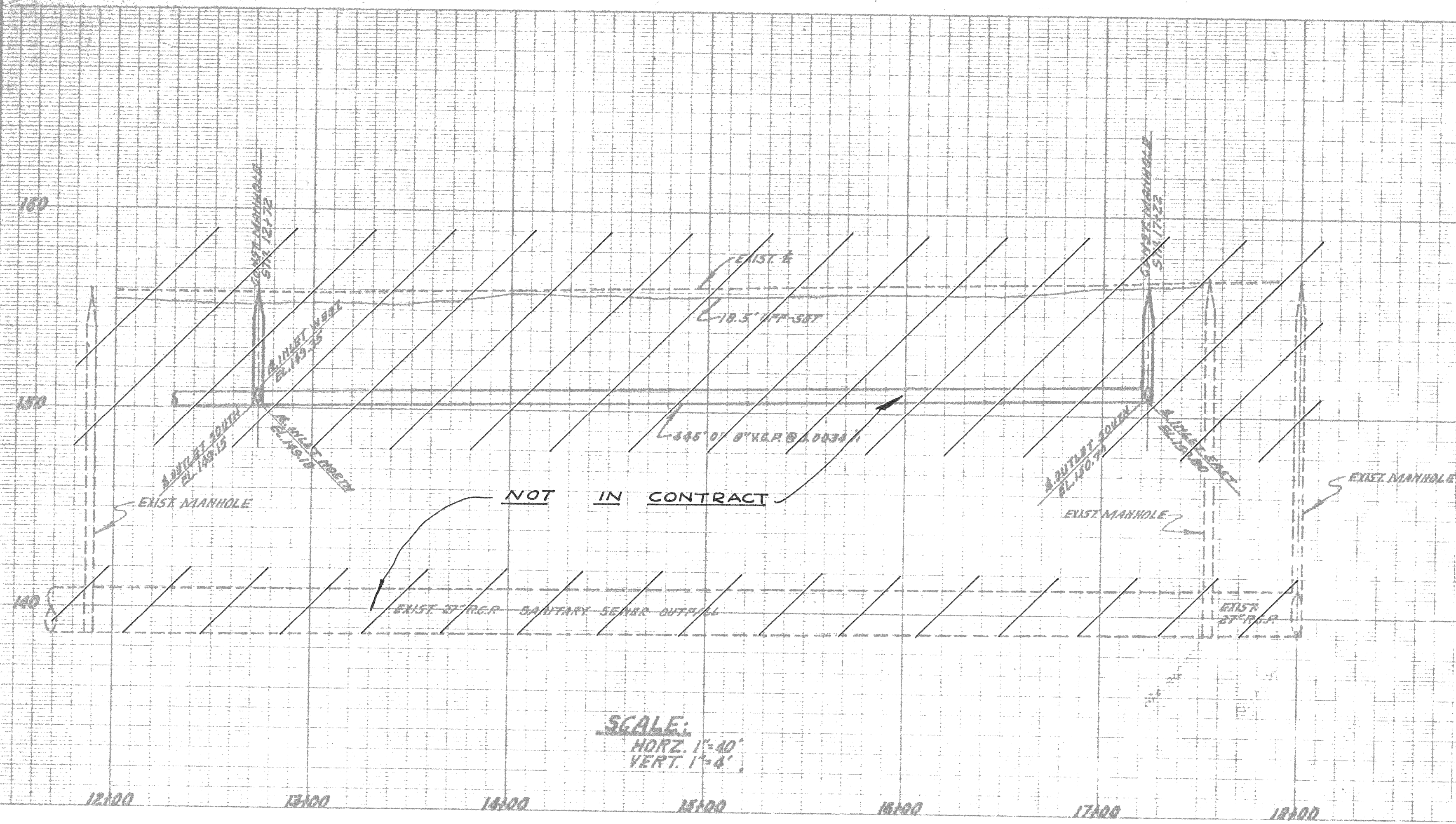
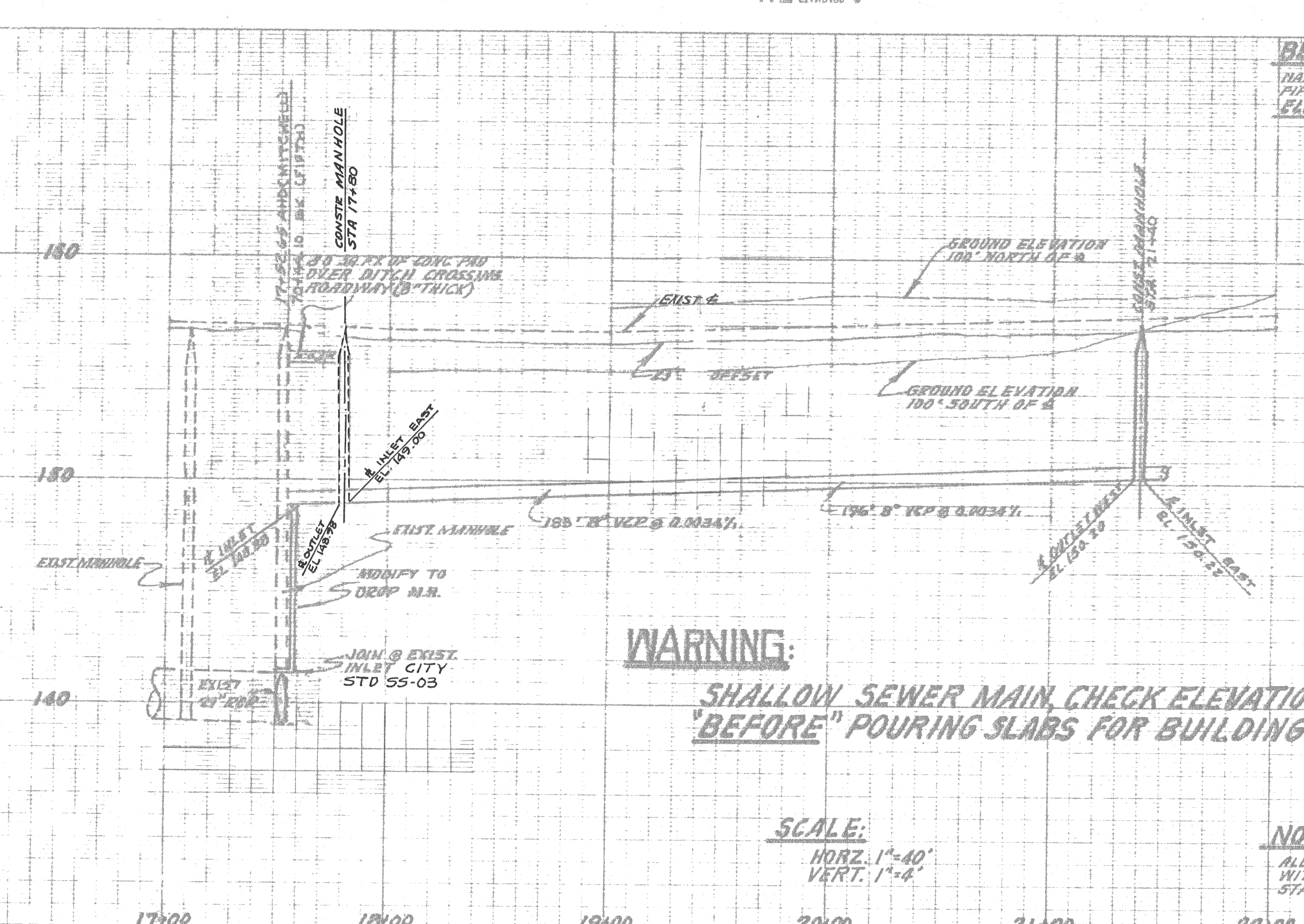


**BENCH MARK:**  
 NAIL IN W.P. NORTH EAST CORNER OF  
 FIFTH AVENUE AND OROVILLE-DAY BLVD.  
 ELEVATION 135.75



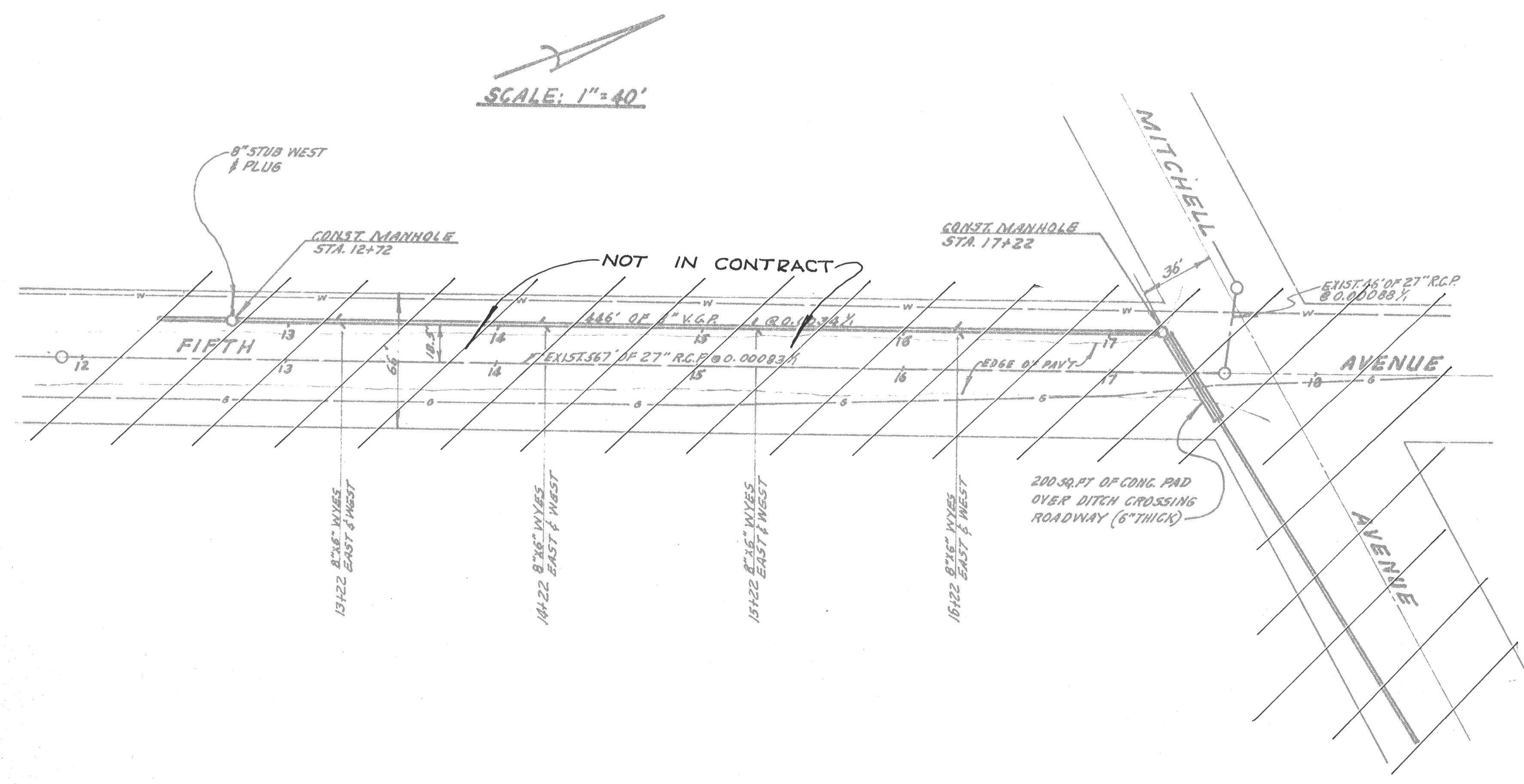
SCALE:  
 HORZ. 1"=40'  
 VERT. 1"=8'



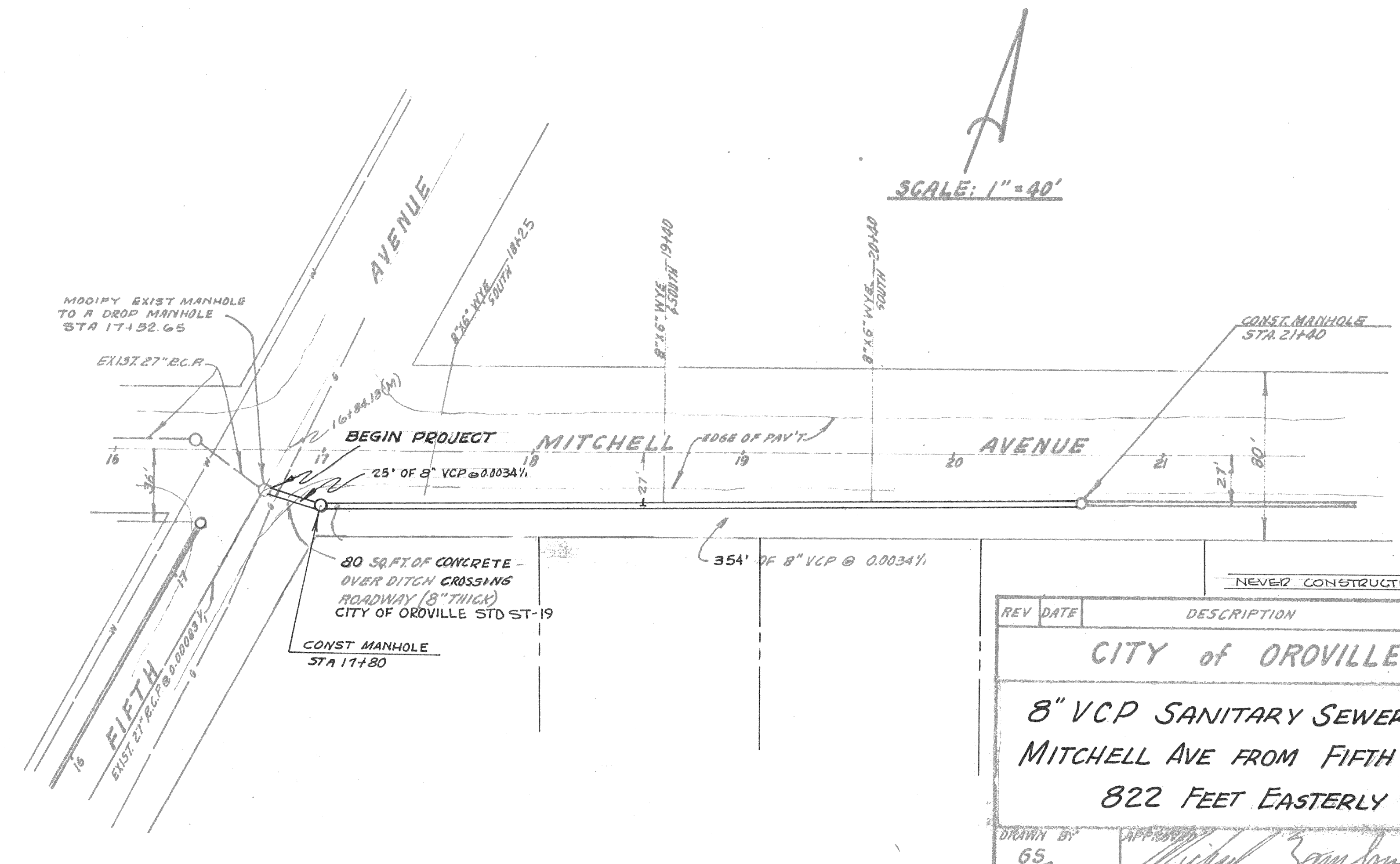
**WARNING:**  
 SHALLOW SEWER MAIN CHECK ELEVATION  
 "BEFORE" POURING SLABS FOR BUILDINGS.

SCALE:  
 HORZ. 1"=40'  
 VERT. 1"=8'

**NOTE:**  
 ALL WORK SHALL BE IN ACCORDANCE  
 WITH THE CITY OF OROVILLE  
 STANDARDS AND SPECIFICATIONS



SCALE: 1"=40'



SCALE: 1"=40'

REV	DATE	DESCRIPTION	APPRO. BY
		NEVER CONSTRUCTED	
<b>CITY of OROVILLE</b>			
<b>8" VCP SANITARY SEWER IN MITCHELL AVE FROM FIFTH AVE TO 822 FEET EASTERLY</b>			
DRAWN BY	APPROVED	DATE	
65	<i>Michael J. ...</i>	7/9/16	
CHECKED BY	RETRAD	DATE	
<i>WJ</i>			
SHEET			
1 of 2			