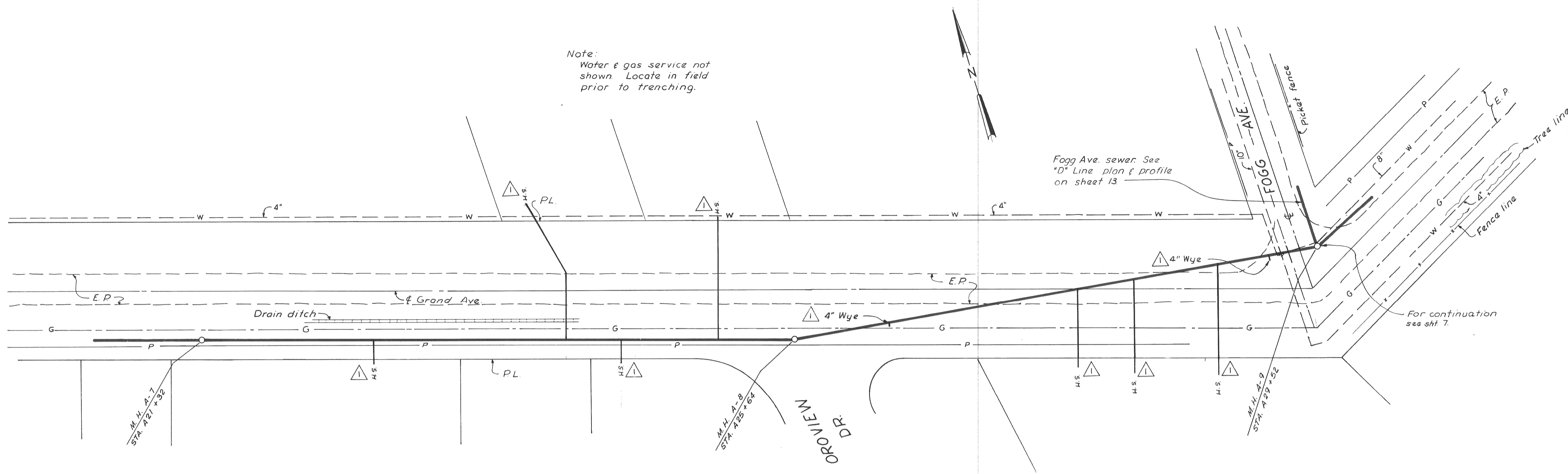


Note:
Water & gas service not shown. Locate in field prior to trenching.



Fogg Ave. sewer. See "D" Line plan & profile on sheet 13.

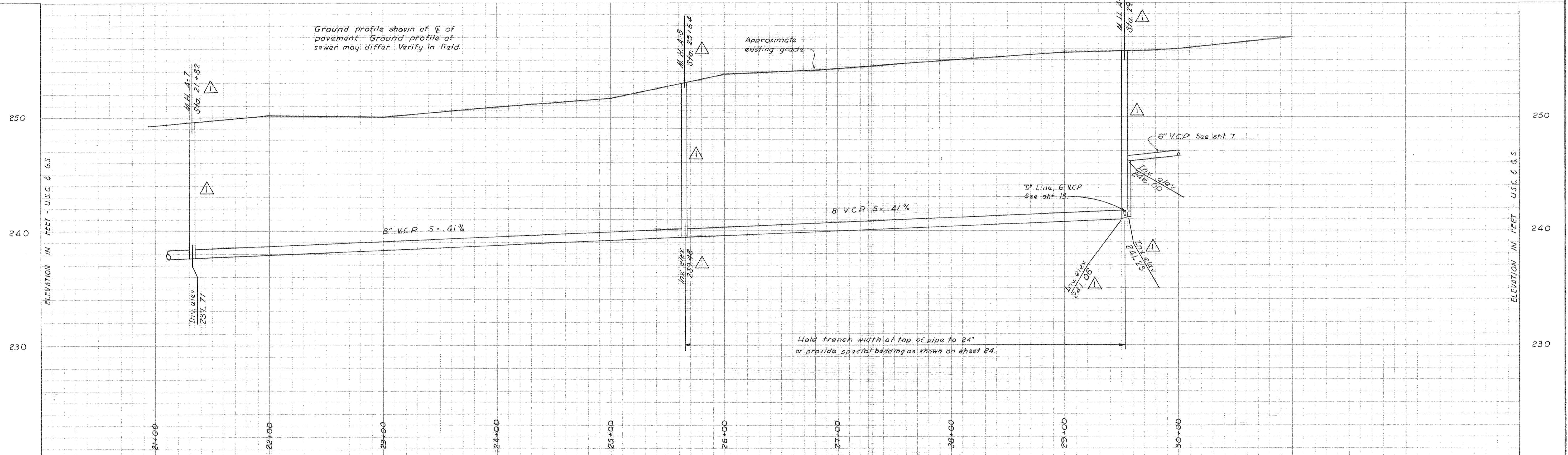
For continuation see sht 7.

AS BUILT

NOTE: Wyes are marked in field at property lines by a 2" x 2" redwood stake.

NOTE:
As-Built invert elevations are not field surveyed. Where manholes were moved from original locations or where manholes were added, inverts were calculated using slopes from original plans and distances as furnished for As-Built.

Scales:
Horizontal: 1" = 40'-0"
Vertical: 1" = 4'-0"



Ground profile shown of ϕ of pavement. Ground profile of sewer may differ. Verify in field.

Approximate existing grade

Hold trench width at top of pipe to 24" or provide special bedding as shown on sheet 24.

DEWANTE AND STOWELL
SANITARY AND CIVIL ENGINEERS - SACRAMENTO, CALIFORNIA

REVISION	DATE	DESCRIPTION	BY	APPD.
△ AB	8/26/63	Revised manhole stationing, location and invert elevations	HNH RNE	ERS

SUBMITTED
Edwin R. Stowell
APPROVED:
R. M. Carpenter

CITY OF OROVILLE
OROVILLE, CALIFORNIA
MUNICIPAL SEWER DISTRICT NO. 1
SANITARY SEWER PROJECT
PLAN AND PROFILE - "A" LINE

DATE:	March 1962	SHEET NO:	6
CHKD:	DRWN:	OF 25	
E.R.S.	R.A.B.		