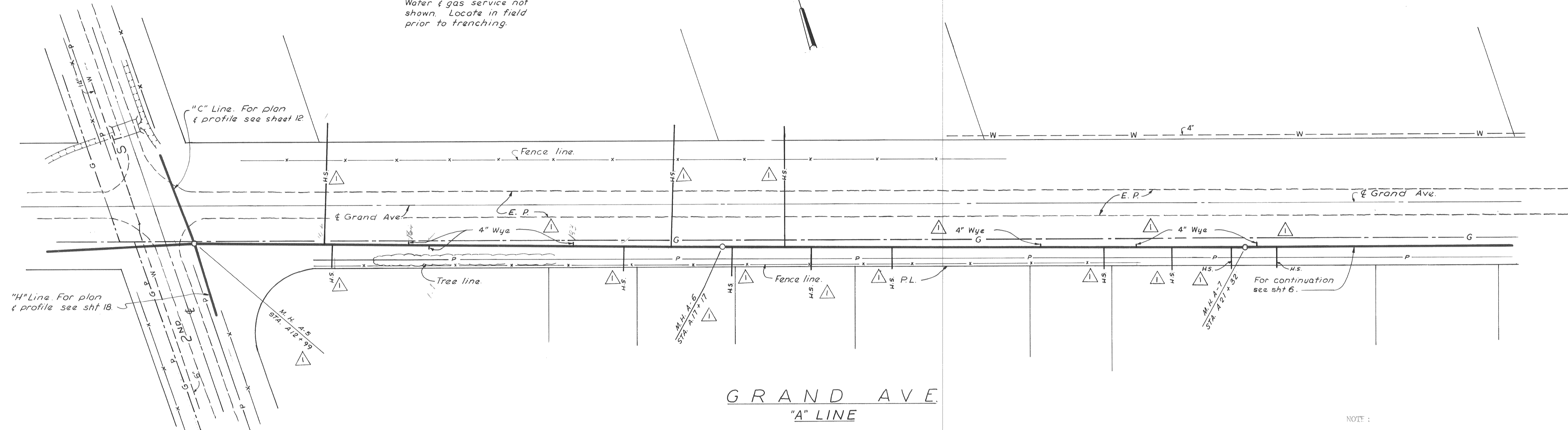


Note:  
Water & gas service not shown. Locate in field prior to trenching.



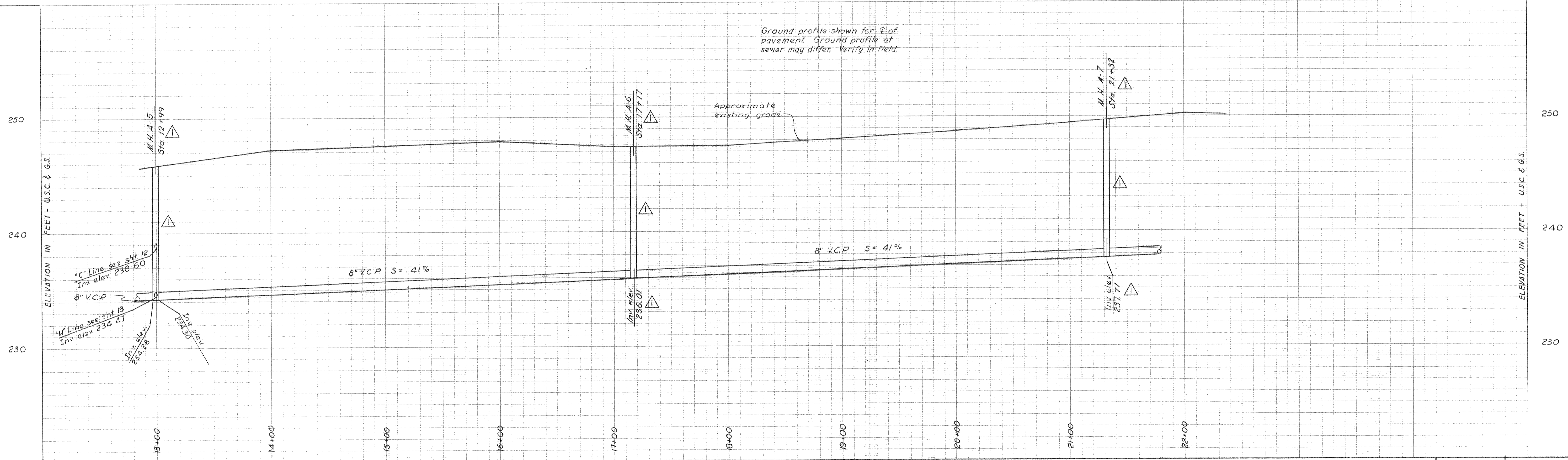
GRAND AVE.  
"A" LINE

AS BUILT

NOTE: Wyes are marked in field at property lines by a 2" x 2" redwood stake.

Scales:  
Horizontal: 1" = 40' 0"  
Vertical: 1" = 4' 0"

NOTE:  
As-built invert elevations are not field surveyed. Where manholes were moved from original locations or where manholes were added, inverts were calculated using slopes from original plans and distances as furnished for As-Built.



Ground profile shown for E of pavement. Ground profile of sewer may differ. Verify in field.

Approximate existing grade.

DEWANTE AND STOWELL  
SANITARY AND CIVIL ENGINEERS - SACRAMENTO, CALIFORNIA

REVISION	DATE	DESCRIPTION	BY	APPD
AB	8/26/63	Revised manhole stationing, location, and invert elevations	HNR	ERS

SUBMITTED:  
*Edwin R. Stowell*  
APPROVED:  
*A. M. Karpits*

CITY OF OROVILLE  
OROVILLE, CALIFORNIA  
MUNICIPAL SEWER DISTRICT NO. 1 SANITARY SEWER PROJECT  
PLAN AND PROFILE - "A" LINE

DATE:	March 1962	SHEET NO	5
CHKD:	ERS	DRWN:	R.A.B.
		OF	25