

10-1, 141

VI-1

VI-14

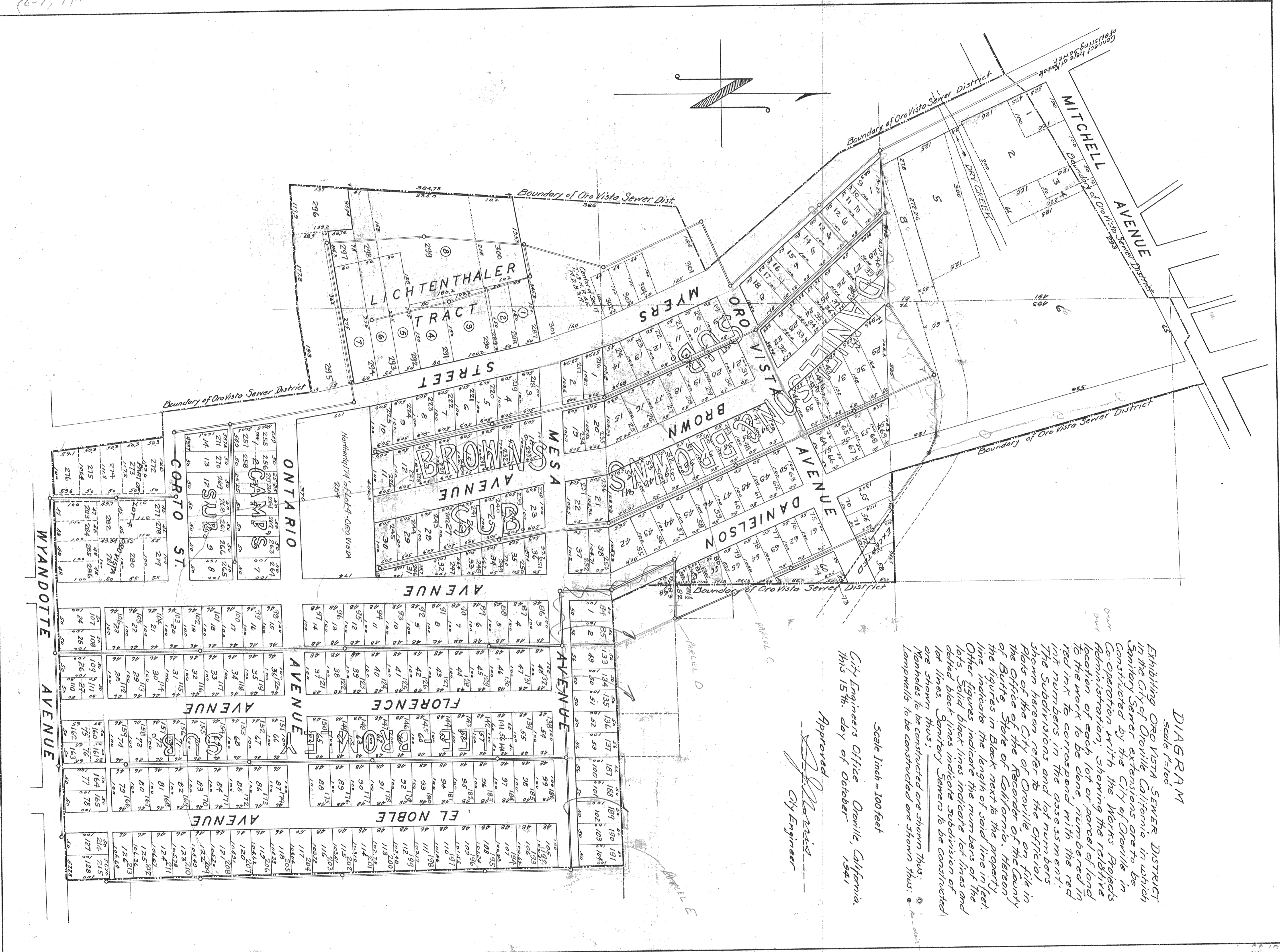


DIAGRAM  
Scale 1"=100'

Exhibiting ORO VISTA SEWER DISTRICT in the City of Oroville California are to be Sanitary Sewer extensions are to be constructed by the City of Oroville in Co-operation with the Works Projects Administration, showing the relative location of each lot or parcel of land to the work to be done, numbered in red ink to correspond with the red ink numbers in the assessment. The Subdivisions and lot numbers shown hereon refer to the Official Plat of the City of Oroville on file in the Office of the Recorder of the County of Butte State of California. The numbers in Black next to the property line indicates the length of said line in feet. Other figures indicate the numbers of the lots. Solid black lines indicate lot lines and dashed black lines indicate subdivision of lot lines. Sanitary Sewers to be constructed are shown thus: Manholes to be constructed are shown thus:

Scale 1 inch = 100 feet

City Engineers Office Oroville, California.  
this 15th day of October 1941

Approved  
*[Signature]*  
City Engineer

VI-15

VI-1