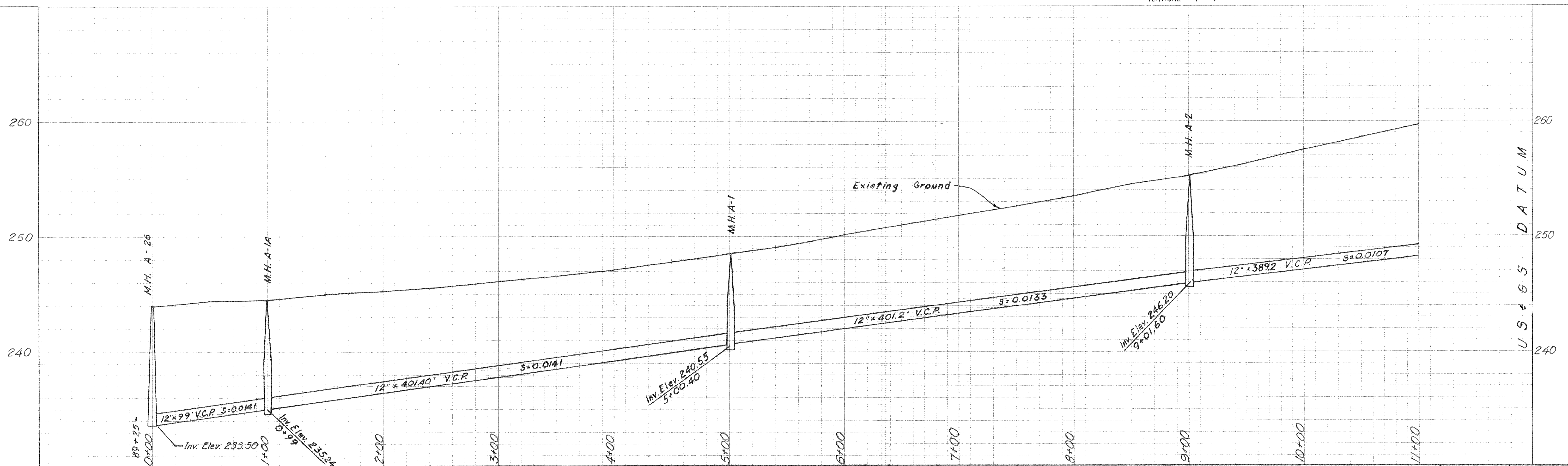


B.M. S-1 Spike in J.P. 20'
Elev. 249.5 right of Sta. 5+50

SCALE:
HORIZONTAL ~ 1" = 40'
VERTICAL ~ 1" = 4'



BUMGARNER ENGINEERING SERVICE
SANITARY AND CIVIL ENGINEERS — OROVILLE, CALIFORNIA

REVISION	DATE	DESCRIPTION	BY	APPD.

SUBMITTED _____
APPROVED _____

CITY OF OROVILLE
OROVILLE, CALIFORNIA
OLIVE HIGHWAY - FOOTHILL BOULEVARD SEWER MAIN EXTENSION
PLAN AND PROFILE "A" LINE

DATE: July 26, 1962
SHEET NO. 3
CHKD: J.A.B. DRWN: J.S.
OF 14