

Supplemental Benefits Fund

Whitewater Ad hoc Committee
Steering Committee Presentation
July 1, 2009



The Feather River *“Our Greatest Resource”*...



**ORO
VILLE**
THE FUN STARTS HERE!

Purpose...

"...the ad hoc committee will review the criterion for each of five (5) Whitewater Sites that have been narrowed down from eleven (11) originally suggested and visit each with a recommendation to the Steering Committee..."

- SBF Steering Committee April 1, 2009

Ad hoc Committee Members...

- Sue Corkin *City of Oroville*
- Loren Gill *FRRPD*
- Dave Steindorf *American Rivers*
- Sonny Brandt *Community Representative*
- Mike Evans *Community Representative*
- Carlos Sawyer *Community Representative*

Planning...Review...Recommendations



Ad hoc Committee Alternates...

- JR Simpson *City of Oroville*
- Vene Thompson *FRRPD*
- Jan Hill *FRRPD*
- Steve Rothert *American Rivers*
- Claudia Knaus *Oroville Area Chamber of Commerce*
- Bob Hewitt *Community Representative*
- Betsey Downey *Community Representative*
- Dax Downey *Community Representative*
- Chris Tellis *Community Representative*

Ad hoc Committee Meeting dates...

- April 24th Strategy Session
- May 1st Site Visit
- May 8th Site Visits
- May 15th Site Visits
- May 22nd Review Sites
- June 19th Presentation Planning

- July 1st Presentation to the SBF Steering Committee

Criterion Evaluation Used...

- Available Infrastructure
- Constraints
- Economic Potential
- Aesthetics
- Green Aspects
- Venue



- "Oroville really is the best kept secret. The Feather river should be the focus of the future park, multiple opportunities will happen including enhanced recreational emphasis and economic growth..."

Chris Tellis (Community Representative)

Available Infrastructure...

- Parking
- Restrooms
- Power
- Accessibility



- "We need to consider building a world class park, people will come, it will enhance & compliment the recreation opportunities that currently exist..."
Sonny Brandt (Community Representative)

Constraints...

- Cultural resource impacts
 - Water quality
 - Gradient & flow
 - Fish/habitant issues
 - Seasonal
 - Regulatory flow & water temperatures
 - Noise factors
 - Hours of operation
 - Lighting at night
-
- *"Keep the venue as close to downtown as possible. It will provide multiple opportunities..."*
Dax & Betsey Downey (Community Representative)



Economic Potential...

- Proximity to Historic Downtown
- Growth/expansion opportunities
- Room for spectators



- *"This venue will definitely put Oroville on the map. As planning occurs, we must commit to preserving the beauty of the Feather River and integrate the Whitewater Park in the most natural approach possible..."*
Sue Corkin (SBF/SC City of Oroville)

Aesthetics...

- Views
- Surroundings
- Visibility
- Public Acceptance
- Blends in with other current uses/synergy
- Would it blend in with potential future uses



- *"Oroville is in the middle of opportunities along the Feather River and the economic development that could occur should be enough to move this project along..."*
Dave Steindorf (American Rivers)

Green Aspects...

- Solar or wind
- Sustainability



- *An understanding of the various fish species is important. A possible roadway across the Diversion Dam would connect that area..."*
Loren Gill (SBF/SC FRRPD)

Venue attributes...

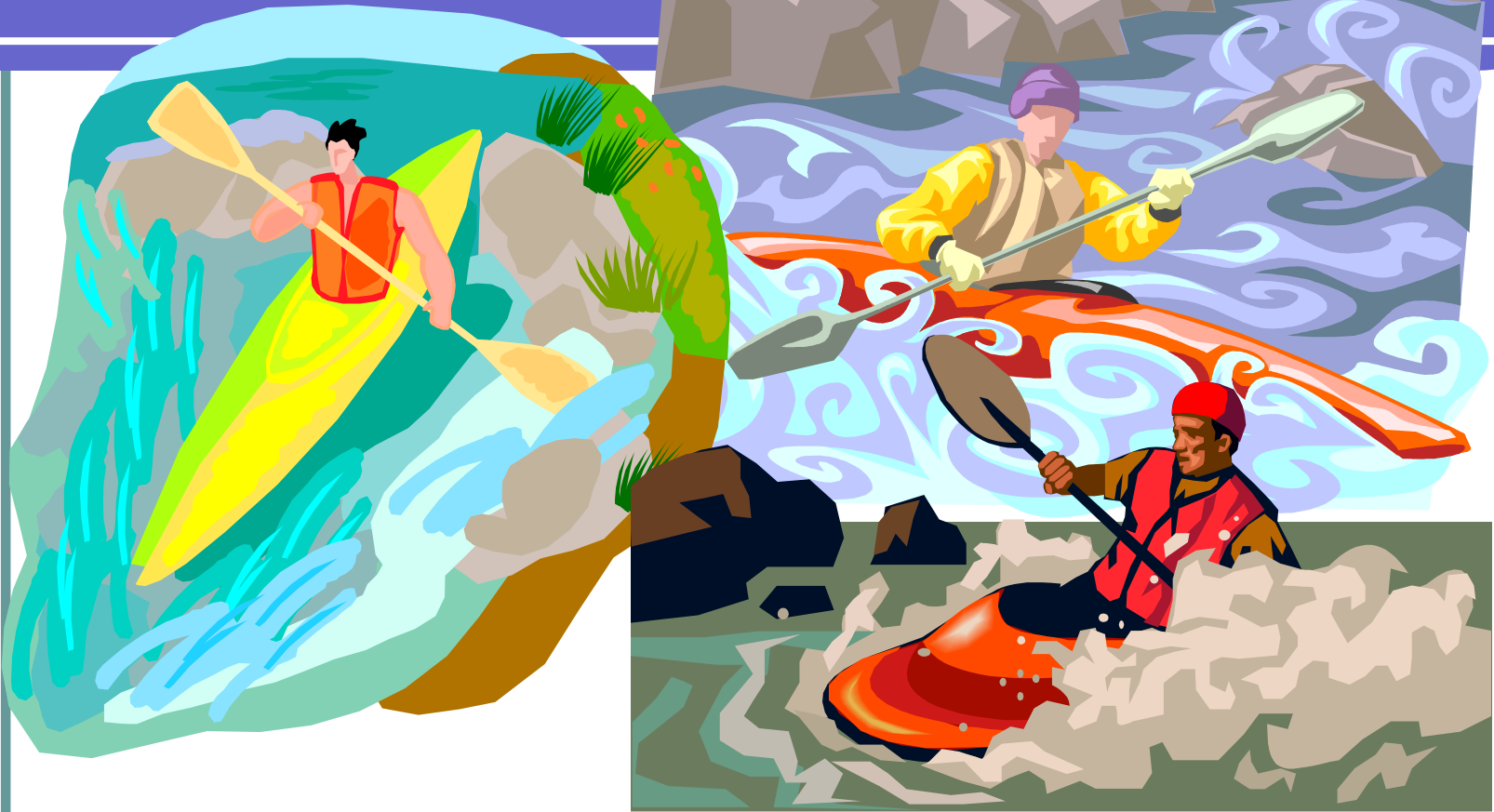
- Potential length of runs
- In-stream (or)
- Artificial channel



- *"It is important to integrate the Feather River & the Historic Downtown. A footbridge is key..."*

Bob Hewitt (Community Representative)

Site Visits...



Sites visited... (Five of Original Eleven)

- Site 1: Below the Diversion Dam & up to the Fish Barrier Dam
- Site 3: Adjacent to Bedrock Park in the Feather River
- Site 8: Adjacent to the North Forebay Recreation Area
- Site 10: Adjacent to the Feather River in Riverbend Park
- Site 11: West of Hwy 70/below the bluff & across from Riverbend Park



Ad hoc Committee

Recommendations...

- Site 11 Riverbend Canyon
- Site 3 Bedrock Park
- Site 1 Diversion Dam to Fish Barrier
- Site 10 Riverbend Park

- Site 8 North Forebay (Exclude)

Riverbend Canyon: Mike Evans



Riverbend Canyon...May 1st

- Site 11 of original 11 sites
- “Riverbend Canyon”
- Above the Feather River @ Hwy 70

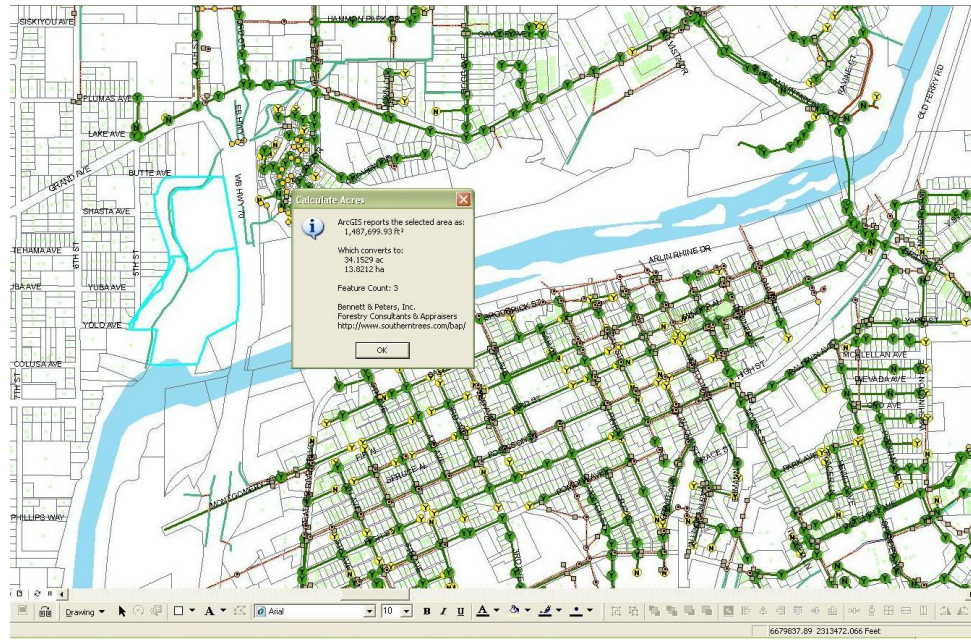


- “Link the river experience to the town; motivate, attract and keep private investors. The Historic Downtown should be considered the center of the wheel for this project...”

Mike Evans (Community Representative)

Riverbend Canyon...May 1st

- Outside of river venue
- Outside of FERC boundary
- 34.15 acres (3 owners)
- Privately owned



Bedrock Park...May 8th



Positives...

- Natural setting & mature foliage
- Location/Visibility
- Natural canyon
- Gradient
- Noise buffer
- Spectator accessibility
- Cooperative owner

Riverbend Canyon...May 1st



Questions...

- Return route
- Water from Power Cannel
- Possible reservoir/perk issues
- Water temperatures



Riverbend Canyon...May 1st



Constraints...

- People/vehicle circulation
- Lack of existing infrastructure
- Getting water to the run

Bedrock Park:

Carlos Sawyer



Bedrock Park...May 8th

- Site 3 of original 11 sites
- Bedrock Park/in the Feather River



Bedrock Park...May 8th

- In-river venue
- 13 acres Feather River frontage
- Outside of the FERC boundary
- Publicly owned/City of Oroville & Feather River Recreation Park District

- *"Oroville could be similar to Aspen Co. in growth opportunities. We need to be keyed on the correct gradient..."*

*Carlos Sawyer
(Community Representative)*



Bedrock Park...May 8th



Positives...

- Lower development costs
- Existing Amphitheatre
- Parking & restrooms
- Family oriented
- Smaller venue
- Visibility

Bedrock Park...May 8th



Questions...

- Gradient
- Flow
- Water diversion
- Agency involvement
- Fish issues
- Water temperature

Bedrock Park...May 8th



Limitations:

- Salmon spanning area

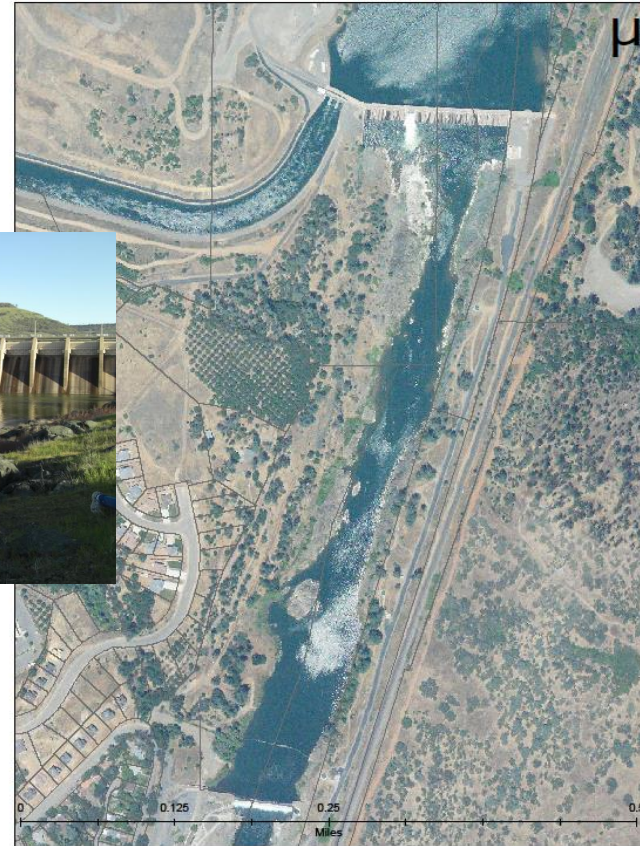


Diversion Dam to Fish Barrier Claudia Knaus



Diversion Dam to the Fish Barrier...May 8th

- Site 1 of original 11 sites
- Out of river venue
- 22.38 acres privately & publicly owned
- Within FERC boundary



- *"Oroville needs to be a destination not to miss; the venue will be a healthy vibrant part of the historic downtown area..."*

Claudia Knaus (Oroville Chamber of Commerce)

Diversion Dam to the Fish Barrier...May 8th



Positives...

- Ample gradient
- Length/overall use
- Natural setting
- Easy return to top
- Close to downtown
- Easy access to water

Diversion Dam to the Fish Barrier...May 8th



Questions...

- Parking
- Cost of water diversion
- Would it affect electrical transmission
- Fish issues
- Water temperature

Diversion Dam to the Fish Barrier...May 8th



Limitations...

- FERC
- Native American artifacts
- Visibility
- Site limitations
- Ingress/egress
- Multiple property ownership

Riverbend Park: Claudia Knaus



Riverbend Park...May 15th

- Site 10 of original 11 sites
- Riverbend Park adjacent to the Feather river



Riverbend Park...May 15th

- Out of river venue
- Feather River frontage
- Outside of the FERC boundary
- Publicly owned/Feather River Recreation Park District



Riverbend Park...May 15th



Questions...

- Sound/noise
- Fish issues
- Water temperatures

Riverbend Park...May 15th



Positives...

- Available Infrastructure
- Parking
- Restrooms
- Visibility
- Distance to Historic Downtown

Riverbend Park...May 15th



Constraints...

- Water pumping
- Gradient
- Area currently is part of Disc Golf Course

North Forebay Recreational Area: Bob Marciniak



North Forebay Recreation Area...May 15th

- Site 8 of original 11 sites
- Near the Forebay Recreational Area



North Forebay Recreation Area...May 15th

- Out of river/bay venue
- Agency owned (DWR)
- 144.0 acres
- Within the FERC boundary



North Forebay Recreation Area...May 15h



- Recommend not considering due to distance from Historic Downtown & other use factors...

Let the adventure begin...

- SBF Steering Committee Direction

