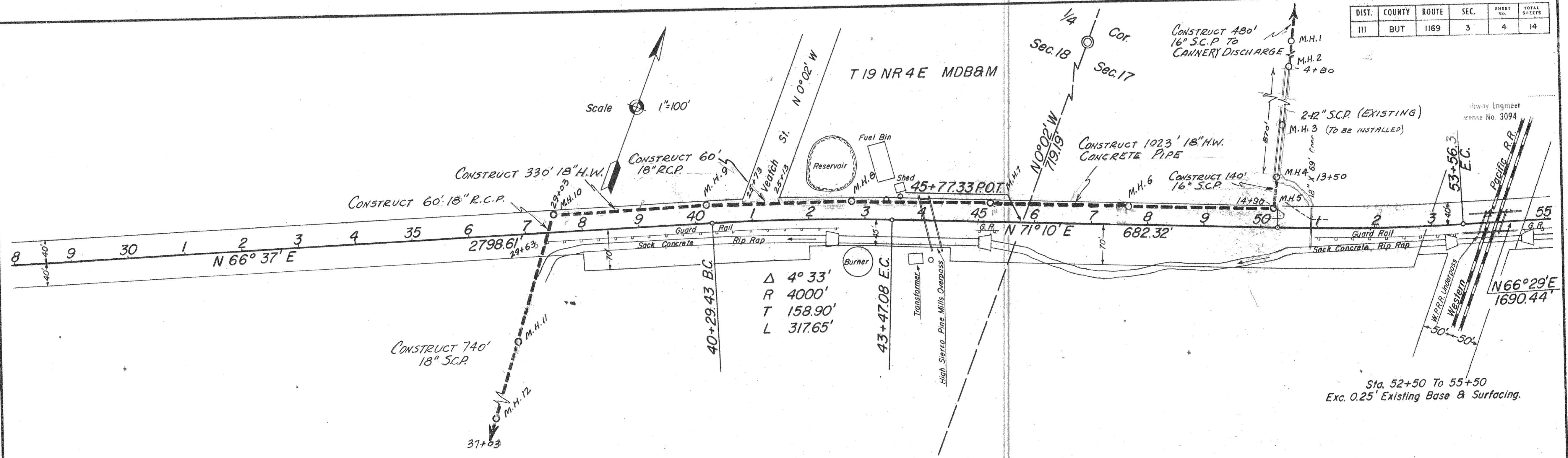


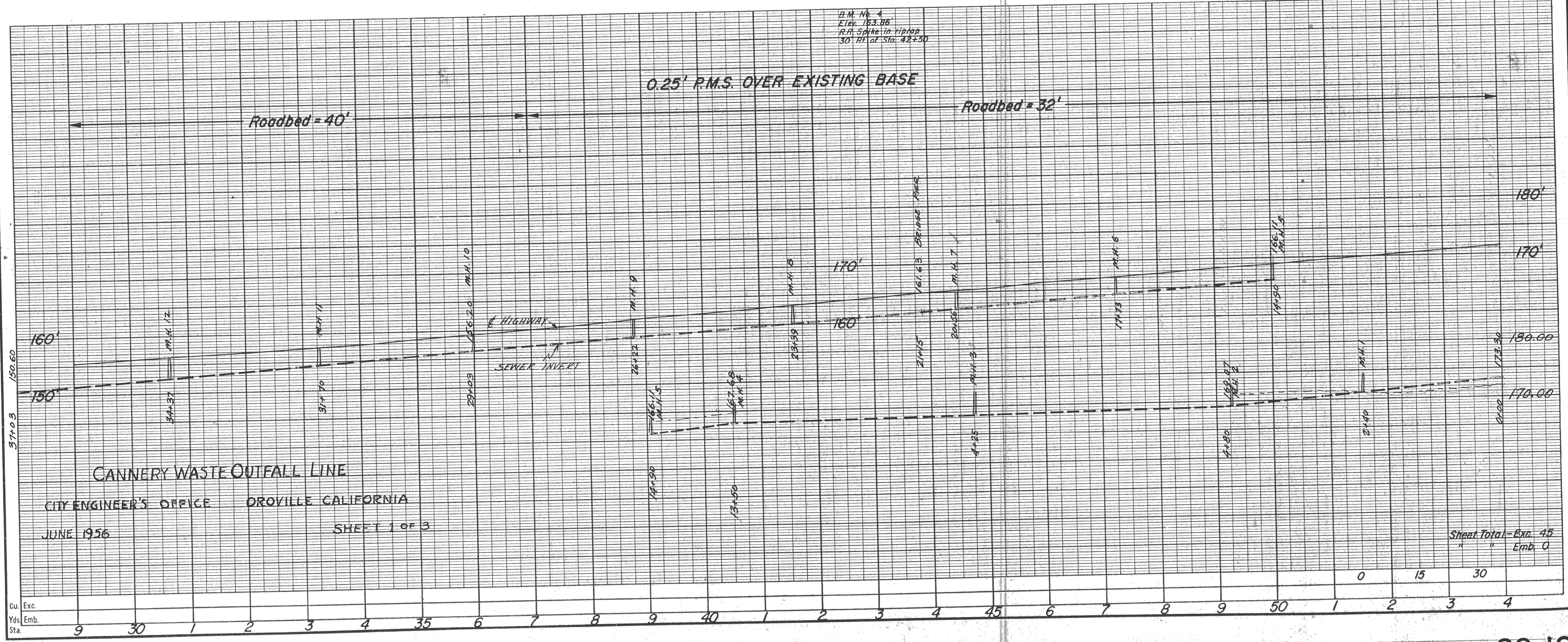
B. P. R. DIV. NO.	STATE	FEDERAL PROJECT NO.	SHEET NO.	TOTAL SHEETS
7	CALIF.	S-1169 (3)	4	14

DIST.	COUNTY	ROUTE	SEC.	SHEET NO.	TOTAL SHEETS
III	BUT	1169	3	4	14



Sta. 52+50 To 55+50
Exc. 0.25' Existing Base & Surfacing.

B.M. No. 4
Elev. 163.86
R.R. Spike in riprap
30' RH of Sta. 42+50



CANNERY WASTE OUTFALL LINE
CITY ENGINEER'S OFFICE OROVILLE CALIFORNIA
JUNE 1956
SHEET 1 OF 3

Sheet Total - Exc. 45
" Emb. 0

Cu. Exc.	9	30	1	2	3	4	35	6	7	8	9	40	1	2	3	4	45	6	7	8	9	50	1	2	3	4
Yds. Emb.	9	30	1	2	3	4	35	6	7	8	9	40	1	2	3	4	45	6	7	8	9	50	1	2	3	4
Sta.	9	30	1	2	3	4	35	6	7	8	9	40	1	2	3	4	45	6	7	8	9	50	1	2	3	4