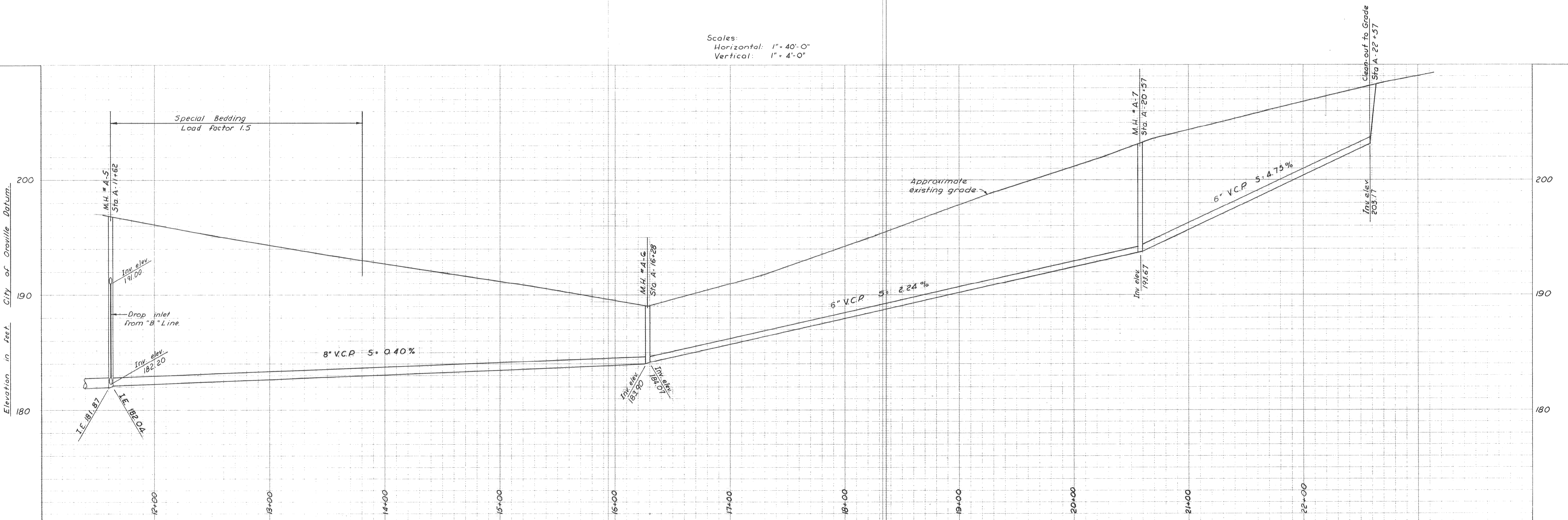


Scales:
 Horizontal: 1" = 40'-0"
 Vertical: 1" = 4'-0"



DEWANTE AND STOWELL
 SANITARY AND CIVIL ENGINEERS - SACRAMENTO, CALIFORNIA

REVISION	DATE	DESCRIPTION	BY	APPD

SUBMITTED
Edwin R. Stowell
 APPROVED
Harold Kroeger

CITY OF OROVILLE
 BUTTE COUNTY, CALIFORNIA
 OROVILLE INDUSTRIAL TRACT, INC. - SANITARY SEWER PROJECT
 PLAN & PROFILE "A" LINE

DATE: April 1961	SHEET NO. 3
CHKD E.R.S.	DRWN R.B.
OF 5	

SS171