

CONTROL CENTER "DC"
(NUMBERS REFER TO NUMBERS ON BREAKER HANDLES)

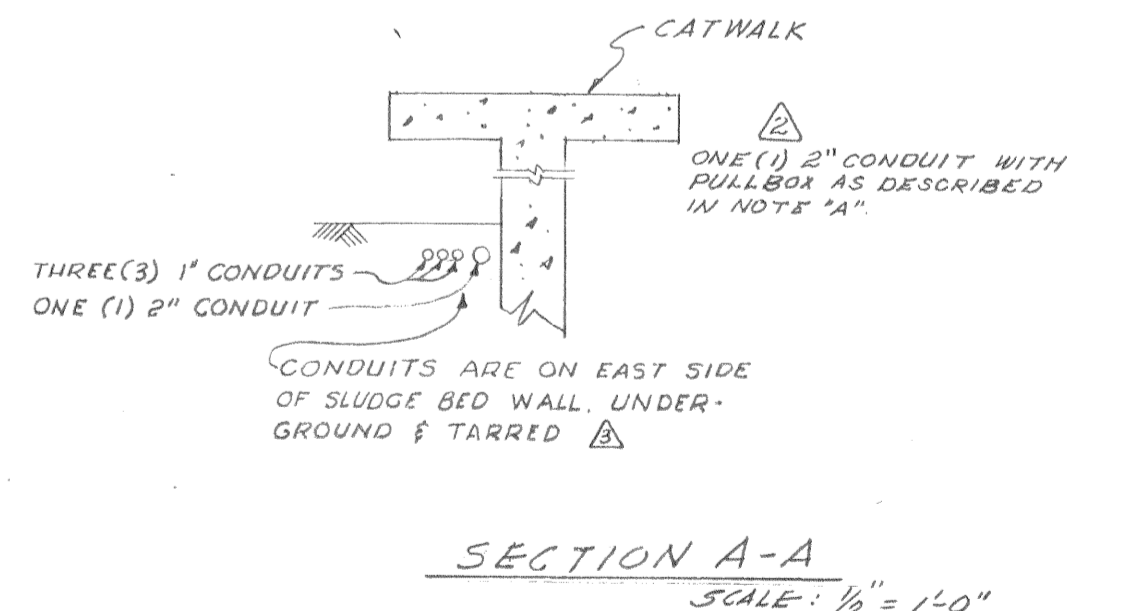
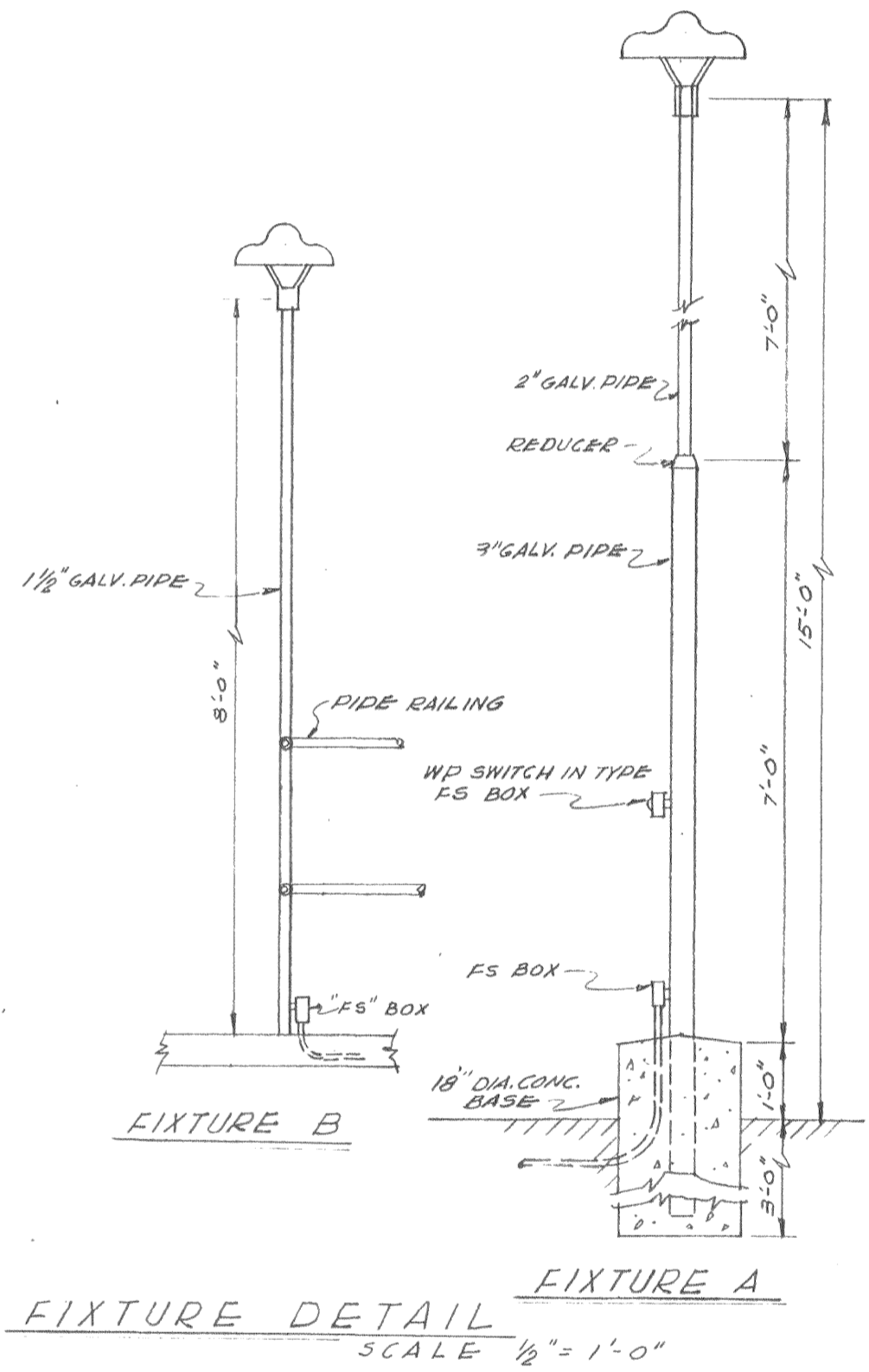
NO	DEFINITION
1	NEMA #1 LINE STARTER W/3 ELEMENT O.L., H-O-A SWITCH & GREEN LAMP INDICATOR, FOR 5 HP MOTOR
2	DITTO 1
3	NEMA #2 LINE STARTER W/3 ELEMENT O.L., START-STOP PUSHBUTTON & GREEN LAMP INDICATOR FOR 10 HP MOTOR
4	20A, 3P, BREAKER-FEEDER TO SLUDGE HEATER CONTROLS
5	100A, 3P, BREAKER-FEEDER TO PANEL B

MAIN CONTROL CENTER "CC"
(NUMBERS REFER TO NUMBERS ON BREAKER HANDLES)

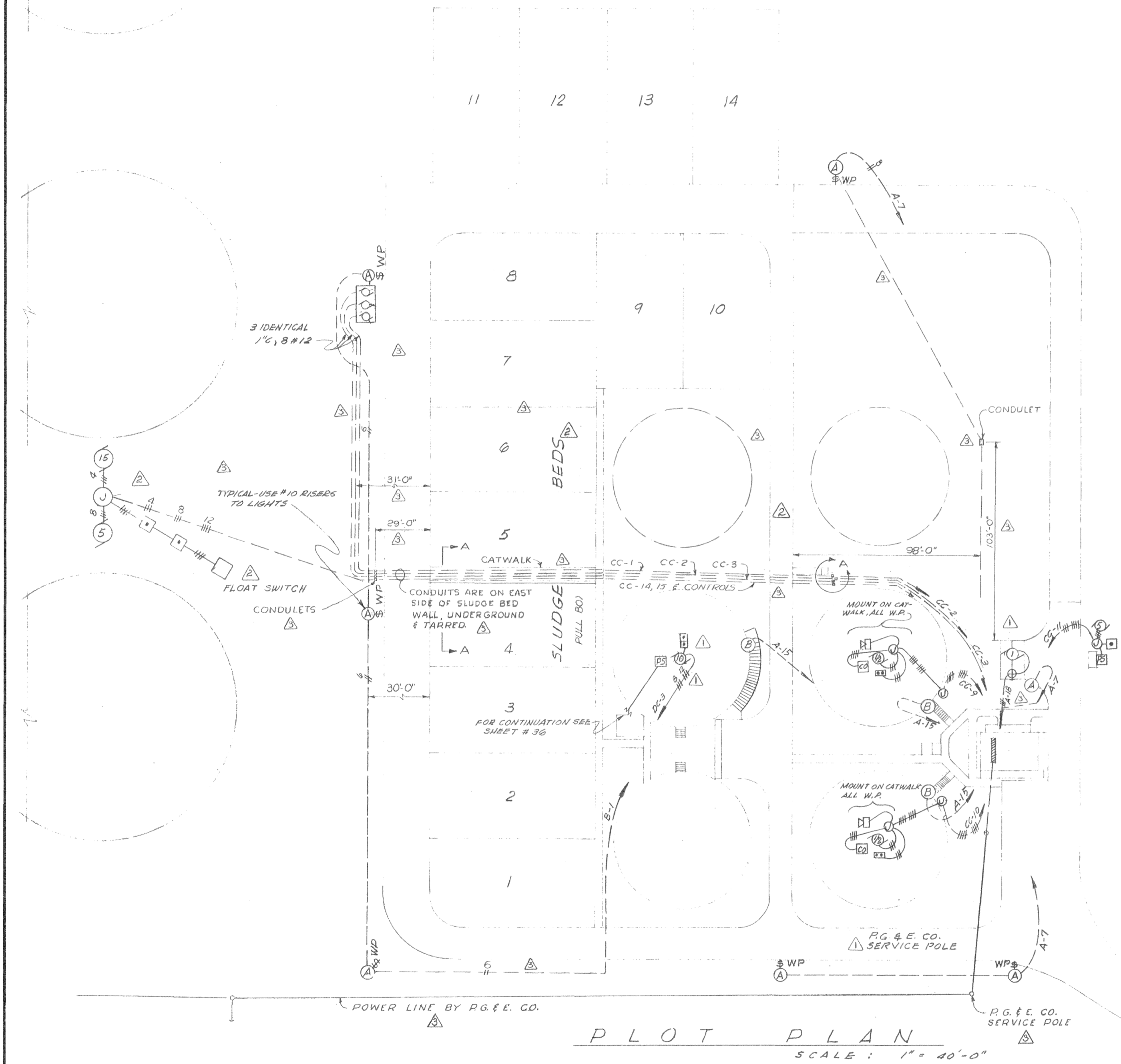
NO	DEFINITION
1	NEMA #1 REVERSING LINE STARTER W/3 ELEMENT O.L. FOR 1/2 HP 3P MOTOR
2	DITTO 1
3	DITTO 1
4	150A, 3P BREAKER-FEEDER TO CONTROL CENTER "DC"
5	100A, 3P BREAKER-FEEDER TO PANEL "A"
6	NEMA #2 LINE STARTER W/3-ELEMENT O.L., FOR 15 HP MOTOR
7	NEMA #3 LINE STARTER W/3-ELEMENT O.L., FOR 30 HP MOTOR
8	DITTO 6
9	NEMA #1 LINE STARTER W/3-ELEMENT O.L. START-STOP PUSHBUTTON & GREEN LAMP INDICATOR FOR 1/2 HP MOTOR
10	DITTO 9
11	NEMA #1 LINE STARTER W/3 ELEMENT O.L., H-O-A SWITCH & GREEN LAMP INDICATOR FOR 5 HP MOTOR
12	NEMA #1 LINE STARTER W/3 ELEMENT O.L. START-STOP PUSHBUTTON & GREEN LAMP INDICATOR FOR 1 1/2 HP MOTOR
13	600A, 3P, FUSIBLE SWITCH W/3-500A DUAL-ELEMENT FUSES-MAIN SERVICE ENTRANCE SWITCH
14	NEMA #1 LINE STARTER W/3 ELEMENT O.L., H-O-A SWITCH & GREEN LAMP INDICATOR FOR 5 HP MOTOR
15	NEMA #2 LINE STARTER W/3 ELEMENT O.L., H-O-A SWITCH & GREEN LAMP INDICATOR FOR 15 HP MOTOR

- NUMBERED NOTES**
- 1 TIME SWITCH, MOUNTED BEHIND DOOR, CONTROLLING SLUDGE PUMP.
 - 2 INCOMING UNDERGROUND FEEDER CONNECTS TO VERTICAL BUS AT BOTTOM.

- NUMBERED NOTES**
- 1 THREE 1/2" O.D. SWITCHES & GREEN LAMP INDICATORS FOR RAW SEWAGE PUMPS.
 - 2 SILENCING SWITCH FOR ROOF ALARM HOBY, H # H # B # 60, E P D T, W/ RED LAMP INDICATOR, (LAMP SHALL REMAIN LIT WHENEVER SWITCH IS IN "SILENT" POSITION).
 - 3 THREE SETS THERMAL OVERLOAD SWITCHES, BRYANT #1000, W/ GREEN LAMP INDICATORS - FOR ROOF EXHAUST FAN, MOTOR-ROOM BLOWER, AND AIR COMPRESSOR.
 - 4 THREE SETS BLUE & AMBER LAMP INDICATORS TO INDICATE OPEN OR CLOSED POSITION OF SLIDE GATES #1, 2, & 3.
 - 5 SIX SETS GREEN LAMP INDICATORS - RUNNING INDICATION FOR REMOTE MOTORS IN SLUDGE CONTROL HOUSE.
 - 6 NINE INCH SEMI-FLUSH MOUNTED TELECHARON CLOCK FLOW METER (NIEC). MOUNTING TO BE PROVIDED BY SWITCHBOARD MANUFACTURER, ALL WIRING AND CONNECTIONS IN ELECTRICAL CONTRACT.
 - 7 TYPICAL - ALL DEVICES ON BOARD IDENTIFIED BY ENGRAVED, WHITE-ON-BLACK, SANDWICH MICA/TA NAME PLATES. SUBMIT NAME PLATE SCHEDULE OF SIZES AND LEGENDS FOR APPROVAL.
 - 8 FIVE PRESSURE SWITCHES (NIEC) - MOUNTED IN BUBBLETROL, ALL WIRING AND CONNECTIONS IN ELECTRICAL CONTRACT.
 - 9 FLUSH MOUNTING TIME SWITCH, YORK #1962 ZFL, 35A, 2 PST, W/ ASTRONOMIC DIAL, (SWITCHES OUTSIDE LIGHT CIRCUITS A-7 & A-15).



NOTE "A": 6"x6"x24" WEATHERPROOF HOT DIPPED AND GALVANIZED GUTTER WITH 2" WELDED HUB IN EACH END AND 1/2" SHEET RUBBER PACKING GASKET WITH COVER HELD BY 3/8" NON FERROUS BOLTS ON 3" CENTERS.



A S BUILT

REV	DATE	DESCRIPTION	BY	APP
1	5-1-61	RELOCATE CONDUITS & POWER LINE, MOVED FIG. 9, REVERSED END UNITS OF MAIN CONTROL CENTER.	RAB	[Signature]
2	9-28-59	ADD. COLLECTOR WELL PUMPS & CORRECTED FIGURES	L.K. R.H.D.	[Signature]
3	8-13-59	REVISED SERVICE & GAS COMPRESSOR CONTROL	G.L.	[Signature]

MARIO F. AJELLO
Electrical Engineer
Reg. #5466
Carmichael, Calif.

CITY OF OROVILLE
BUTTE COUNTY, CALIFORNIA

SEWAGE TREATMENT PLANT
ELECTRICAL LAYOUT
& DETAILS

DEWANTE AND STOWELL
SANITARY AND CIVIL ENGINEERS - SACRAMENTO, CALIFORNIA

DRAWN: M.A.
CHECKED: R.H.D.
DATE: Mar 1959

SUBMITTED: [Signature]
APPROVED: [Signature]
DATE: Mar 1959

SHEET NO. 34 OF 36