

All drain pipe to be 14 ga. C.M.P., perforated with 3/8\"/>

Provide 14\"/>

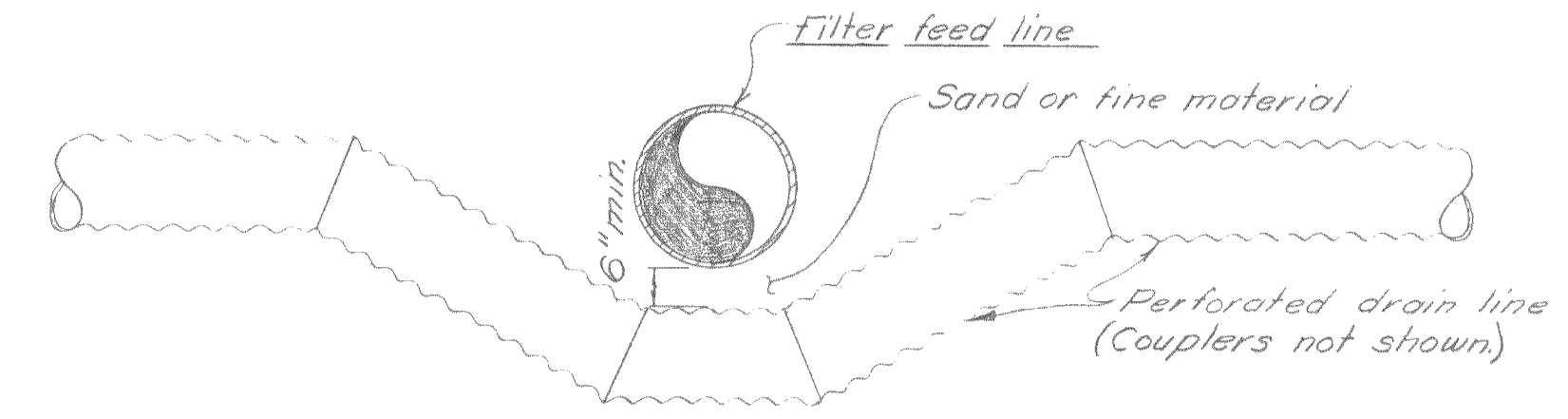
Collection Well (See sht. 2)

14\"/>

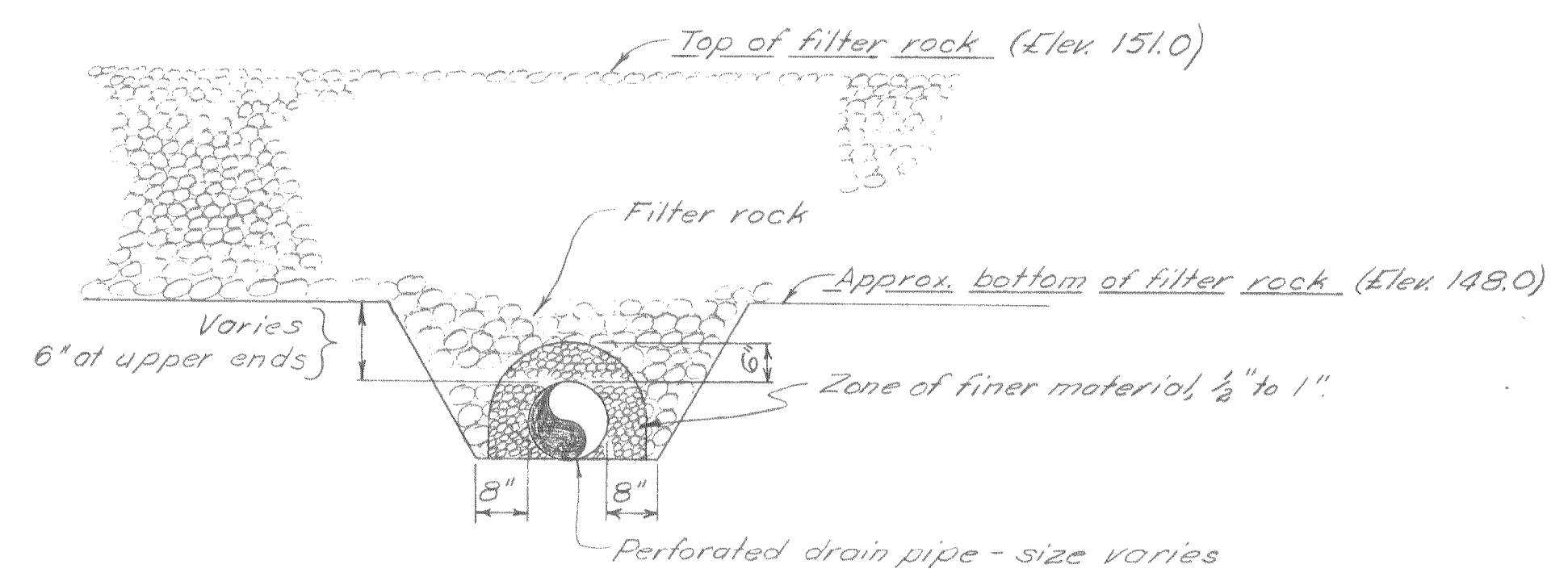
Existing Power pole

Existing Power pole

GENERAL LAYOUT  
Scale: 1" = 40'



TYPICAL CROSSING OF FILTER FEED LINES  
No Scale



TYPICAL SECTION OF DRAIN PIPE  
No Scale

GENERAL NOTES & SPECIFICATIONS

1. These drawings (sht. 1 & 2) together with sheets 34 & 36, Rev. 2, of Contract Plans dtd. March 1959 constitute additions & changes to contract plans necessary to install auxiliary disposal facilities.
2. Features underlined (e.g. Filter Feed Lines) are included in present contract and are not part of auxiliary facilities; all other items are.
3. W.S.P. means welded steel pipe, double dipped with asphalt & wrapped. Install 2 ft min. cover in accordance with contract specs. Welded joints.
4. All provisions of the contract specifications with respect to materials, workmanship, and other items shall be fully applicable.
5. A.P. means Ames Portable Aluminum Irrigation Pipe, Gated. Pipe shall be provided with all necessary fittings & couplings for easy assembly & disassembly. Pipe shall be in 20 ft. sections and laid on top of ground in an approved manner.

AS BUILT

REVISION	DATE	DESCRIPTION	BY	APP
Δ A.B.	5-1-61	Changed fence location.	RAB	RAB

CITY OF OROVILLE BUTTE COUNTY, CALIFORNIA				
AUXILIARY SEWAGE DISPOSAL FACILITIES				
GENERAL LAYOUT				
DEWANTE AND STOWELL SANITARY AND CIVIL ENGINEERS—SACRAMENTO, CALIFORNIA				
DRAWN: L.R.K.	CHECKED: R.H.D.	DATE: Sept. 1959	SUBMITTED: <i>William A. Dewante</i>	APPROVED: <i>H. M. Peppert</i>
			SHEET NO.	1
			OF 2	