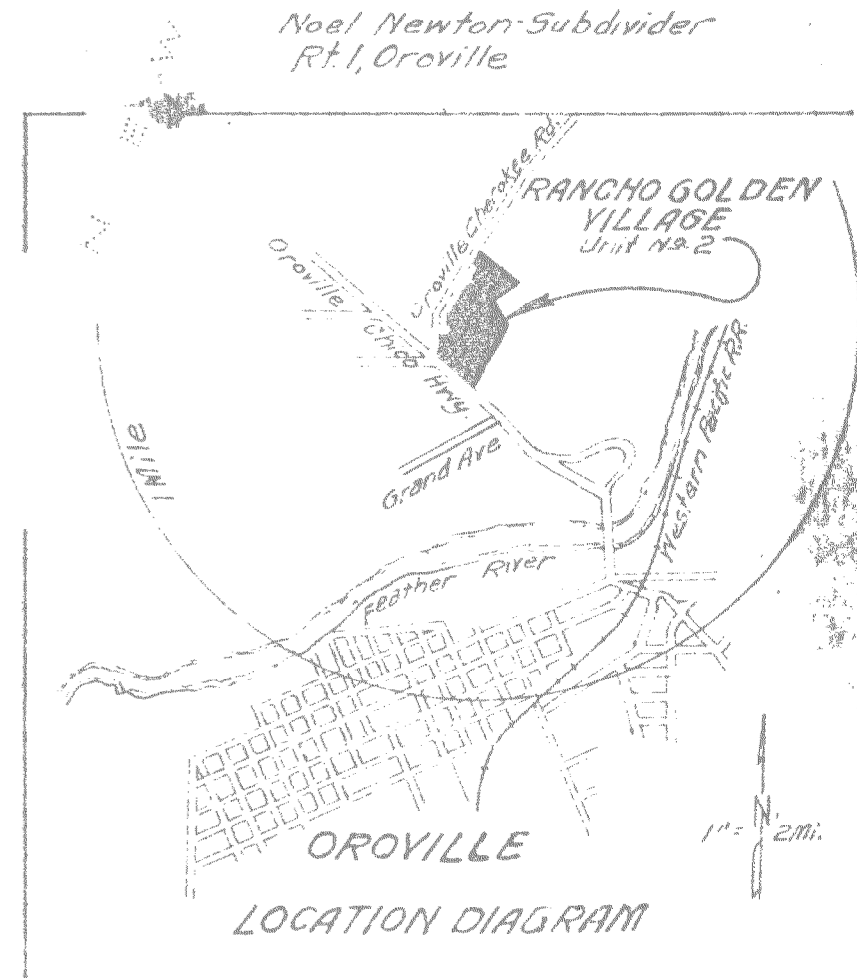
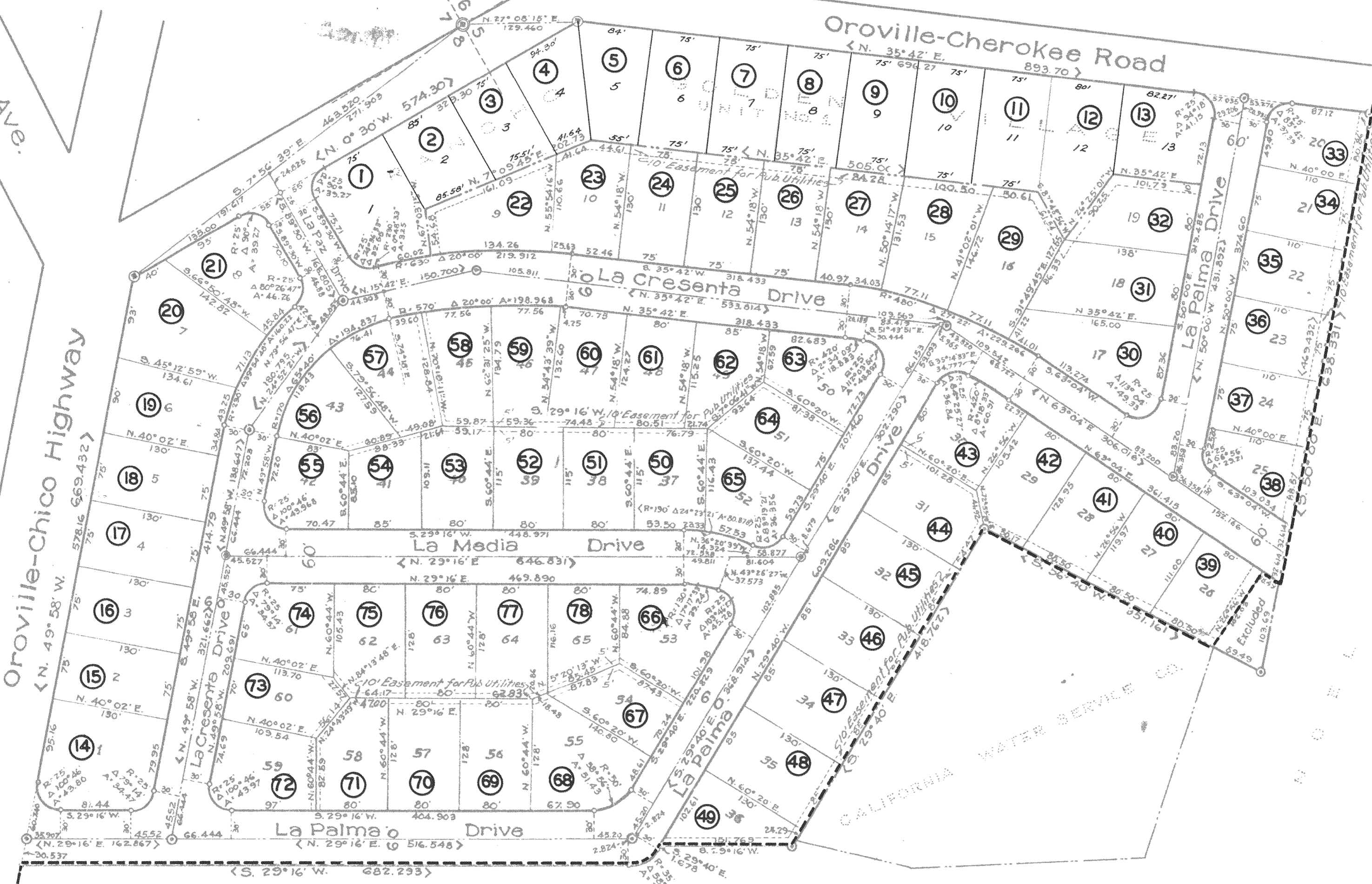


Nelson Ave.

T. 19 N. R. 4 E. M.D.B. & M.

Oroville-Cherokee Road

Oroville-Chico Highway



Map of RANCHO GOLDEN VILLAGE Unit No. 2

In Sections 5 & 8, T. 19 N., R. 4 E., M.D.B. & M. Being a part of Rancho Fernandez, and part of the South 1/2 of the South 1/2 of Sections 5 and 8, T. 19 N., R. 4 E., M.D.B. & M.

Butte County, California. Scale: 1"=100' April 1950 George Washington, Civil Engineer, C.E. 5603.

- Existing concrete monuments shown thus: (circle with dot)
Concrete monuments set under this survey, shown thus: (circle with cross)
All lots defined with iron pipes 1/2"x15"
All curve points defined with iron rods and shown thus: (circle with dot)
Distances between monuments indicated thus: <>

Note: The basis of bearings as shown on this map is the east line of the Oroville-Cherokee Road given as N. 35° 42' E., recorded in Vol. 231 Official Records, Page 86, Butte County Records. 20' set back on front of all lots

Surveyed by: [Signature] Civil Engineer No. 5603.