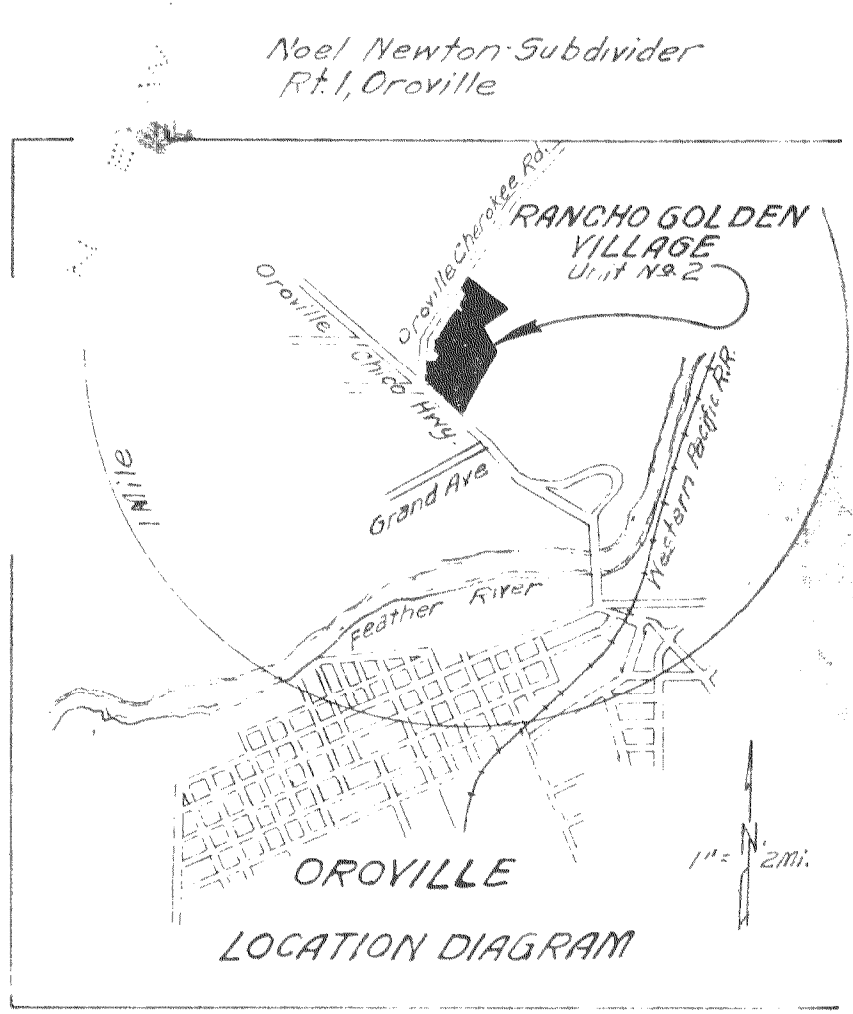


Nelson Ave.



Map of  
**RANCHO GOLDEN VILLAGE**  
Unit No. 2

In Sections 5 & 8, T.19 N., R.4 E., M.D.B. & M.  
Being a part of Rancho Fernandez, and part  
of the South 1/2 of the South 1/2 of Sections 5  
and 8, T. 19 N., R. 4 E., M.D.B. & M.

Butte County, California.  
Scale: 1"=100'  
April 1950  
George Washington, Civil Engineer, C.E. 5603.

- Existing concrete monuments shown thus:
- Concrete monuments set under this survey, shown thus:
- All lots defined with iron pipes 1/2"x15"
- All curve points defined with iron rods and shown thus:
- Distances between monuments indicated thus:

Note:  
The basis of bearings as shown on this map is  
the east line of the Oroville-Cherokee Road given  
as N. 35° 42' E., recorded in Vol. 231 Official Records,  
Page 86, Butte County Records.  
20' Set back on front of all lots

Surveyed by: *Geo. Washington*  
Civil Engineer No. 5603.

SS-153' ST 432  
4A6