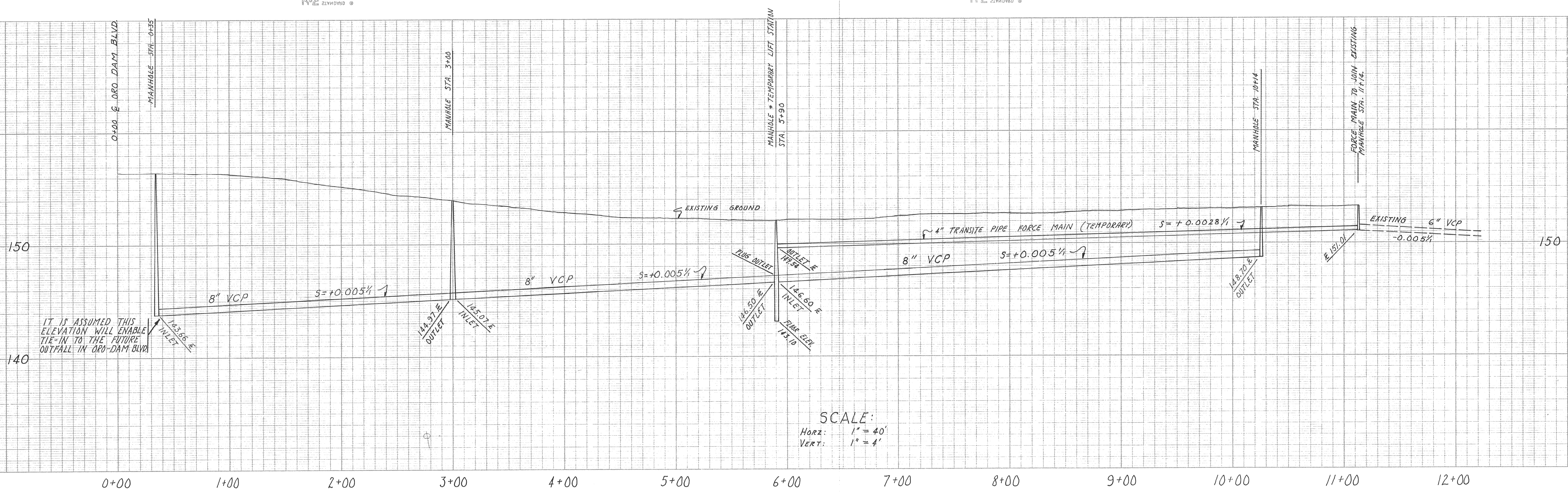


BENCH MARK
 NAIL IN T.P. IN FRONT OF PANCAKE HOUSE
 WEST SIDE OF RD. WAY SEE FILE NO. 91
 ELEVATION 154.81
 AND
 USGS No 181 IN TRAFFIC ISLAND ORO DAM
 AND FEATHER RIVER BLVD.
 ELEVATION 157.79

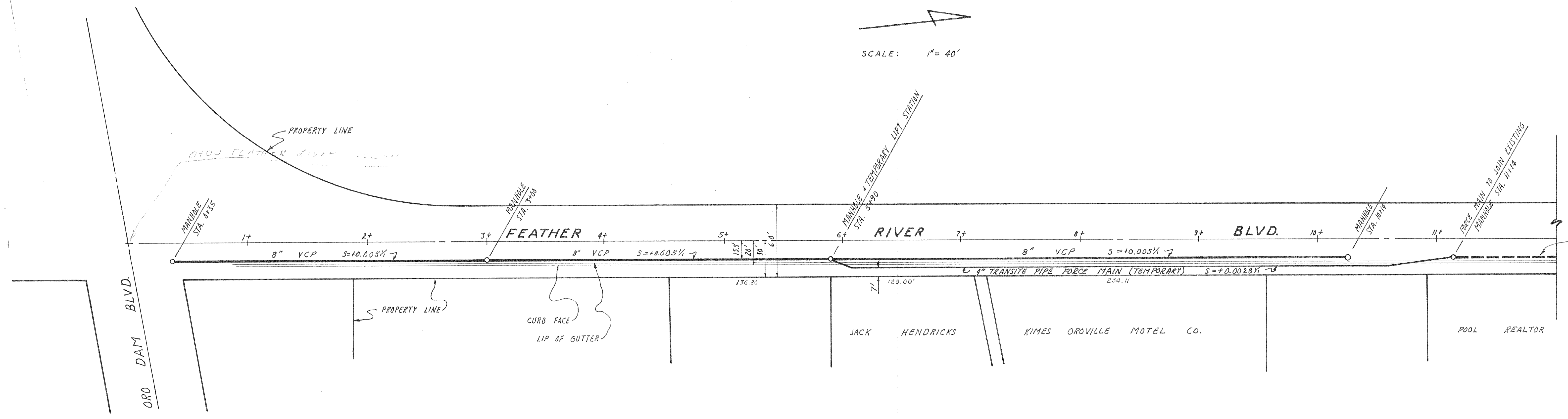


SCALE:
 HORZ: 1" = 40'
 VERT: 1" = 4'

IT IS ASSUMED THIS ELEVATION WILL ENABLE TIE-IN TO THE FUTURE OUTFALL IN ORO-DAM BLVD.

PUMP FOR LIFT STATION
 "AURORA" TYPE NUS-AB SUBMERSIBLE PUMP WITH MANO VANE IMPELLER, WITH A 1 H.P., 1150 RPM, 220/440 VOLTS, 3 PHASE, AND 60 CYCLE MOTOR.

SCALE: 1" = 40'



REV.	DATE	DESCRIPTION	APP'D. BY
CITY OF OROVILLE			
SANITARY SEWER EXTENSION			
FEATHER RIVER BLVD.			
BETWEEN			
ORO DAM BLVD. AND 1200' NORTH			
DRAWN BY	APPROVED		DATE
JUNE 64, R. AGEE	<i>Michael J. Zamboni</i> CITY ENGINEER RE 11448		8/5/64
CHECKED BY			SHEET
<i>MJ</i>			1 OF 1