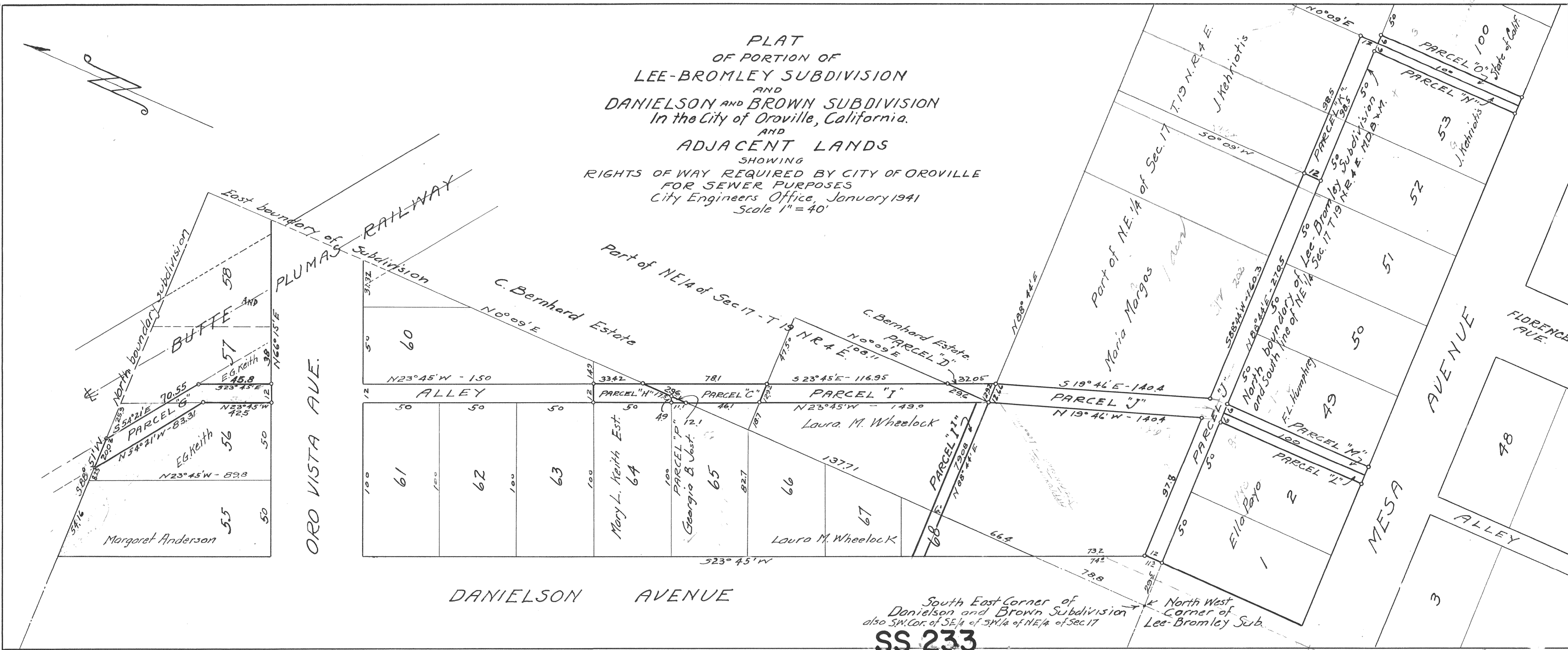


PLAT
OF PORTION OF
LEE-BROMLEY SUBDIVISION
AND
DANIELSON AND BROWN SUBDIVISION
In the City of Oroville, California.
AND
ADJACENT LANDS
SHOWING
RIGHTS OF WAY REQUIRED BY CITY OF OROVILLE
FOR SEWER PURPOSES
City Engineers Office, January 1941
Scale 1" = 40'



South East Corner of
Danielson and Brown Subdivision
also SW. Cor. of SE 1/4 of SW 1/4 of NE 1/4 of Sec 17
SS 233
11-0(2-B)