

BENCH MARK:
 NAIL IN UP NORTHEAST CORNER OF
 FIFTH AVENUE AND OROVILLE-DAM BLVD.
 ELEVATION 154.75

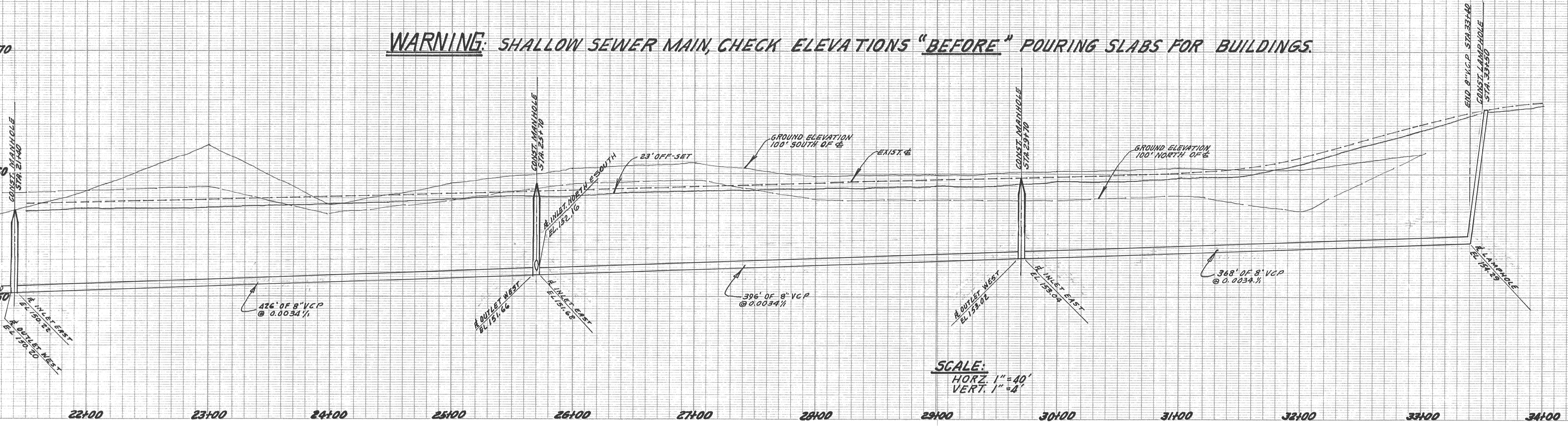
WARNING: SHALLOW SEWER MAIN, CHECK ELEVATIONS "BEFORE" POURING SLABS FOR BUILDINGS.

ENGINEER'S ESTIMATE 5/31/67
 STATION 8+22 TO STATION 33+30

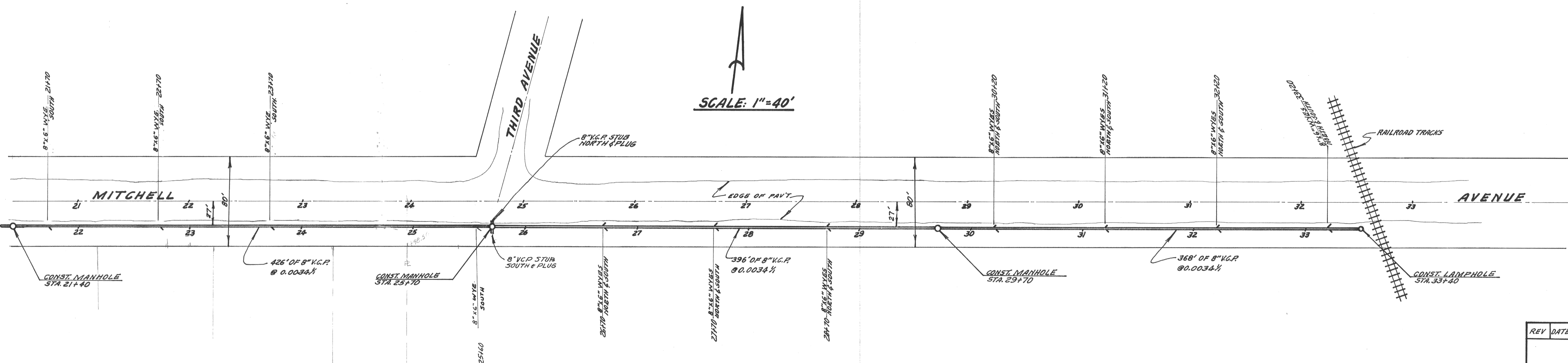
1.	8" V.C.P.	- 2415 FEET	@ \$13.25 PER FT.	- \$ 31,998.75
2.	8"x6" WYES	- 42 EACH	@ \$20.00 PER WYE	- \$ 840.00
3.	8" STUBS	- 2 EACH	@ \$30.00 PER STUB	- \$ 60.00
4.	8" PLUGS	- 2 EACH	@ \$ 0.50 PER PLUG	- \$ 1.00
5.	6" PLUGS	- 4 EACH	@ \$ 0.50 PER PLUG	- \$ 2.00
6.	MANHOLES	- 5 EACH	@ \$400.00 PER MH	- \$ 2,000.00
7.	LAMPHOLE	- 1 EACH	@ \$150.00 PER L.P.	- \$ 150.00
8.	CONG. PAD	- 200 SQ. FT.	@ \$ 0.50 PER SQ. FT.	- \$ 100.00
TOTAL FRONTAGE 4790 LN. FT.				TOTAL \$35,670.75

35,670.75 ÷ 4790 = \$7.446 OR \$7.45 PER FRONT FOOT.

NOTE:
 ALL WORK SHALL BE IN ACCORDANCE WITH THE CITY OF OROVILLE STANDARDS AND SPECIFICATIONS.



SCALE:
 HORZ. 1" = 40'
 VERT. 1" = 4'



REV	DATE	DESCRIPTION	APPD BY
CITY of OROVILLE			
8" SANITARY SEWER ON FIFTH AVE.			
FROM 800' NORTH OF OROVILLE-DAM BLVD TO MITCHELL AVE, AND ON MITCHELL AVE. FROM FIFTH AVE TO 1500 FEET EASTERLY			
DRAWN BY	APPROVED	DATE	
65	<i>Jambor</i>	6/2/67	
CHECKED BY	CITY ENGINEER	RETIARD	
<i>MJ</i>			
			SHEET
			3 OF 3