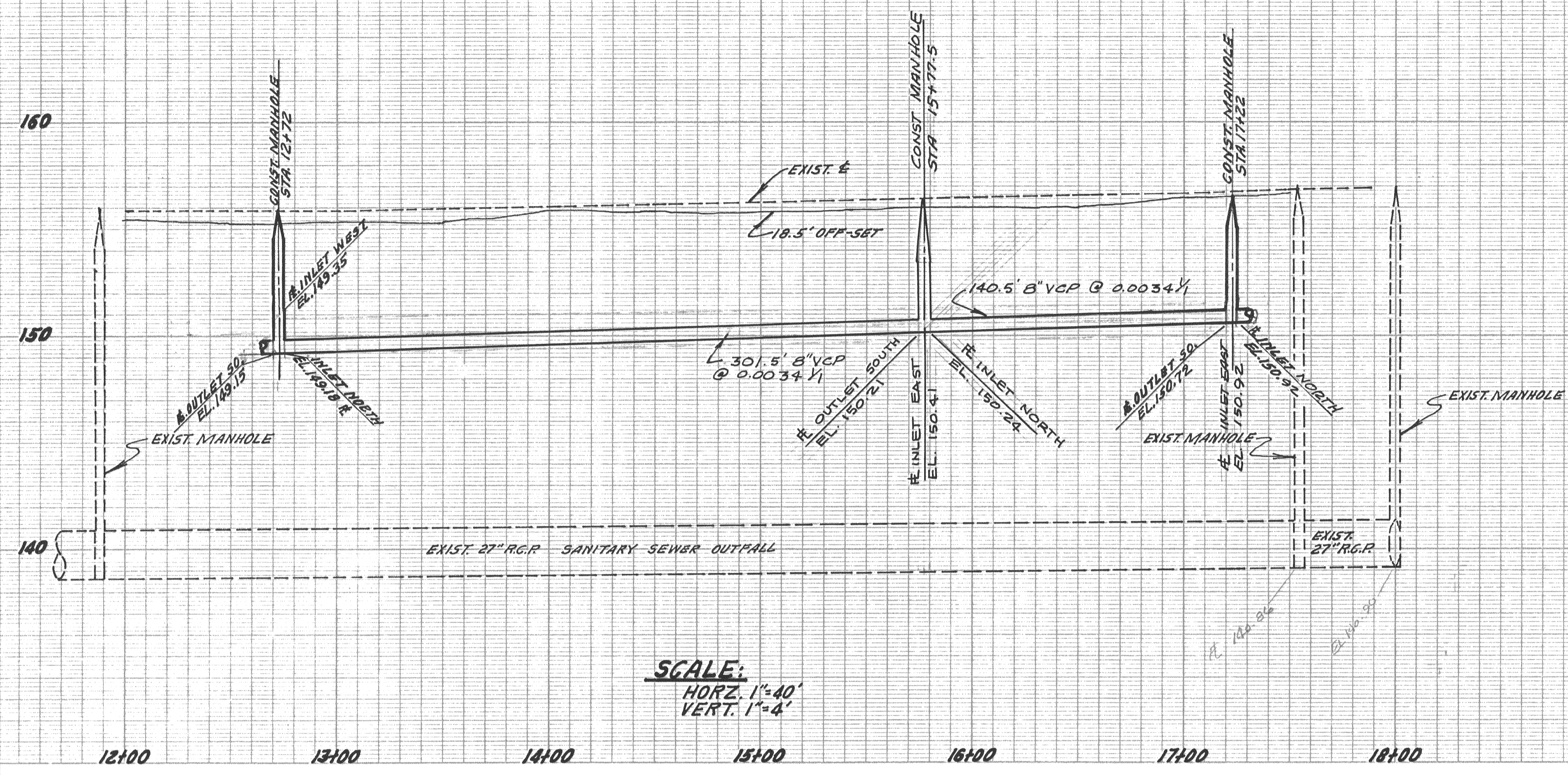
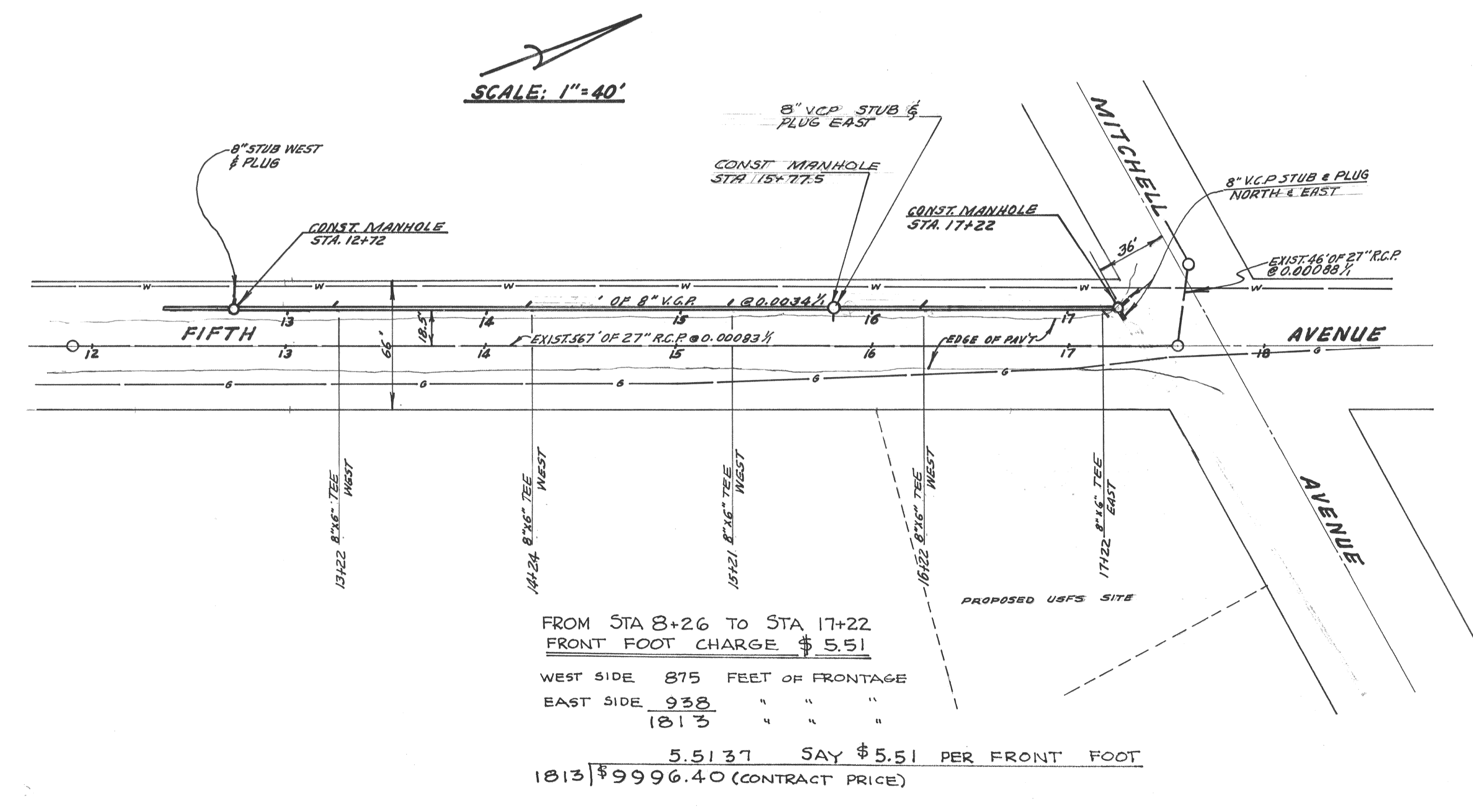


BENCH MARK:
NAIL IN W. NORTHEAST CORNER OF
FIFTH AVENUE AND OROVILLE-DAM BLVD.
ELEVATION 154.75

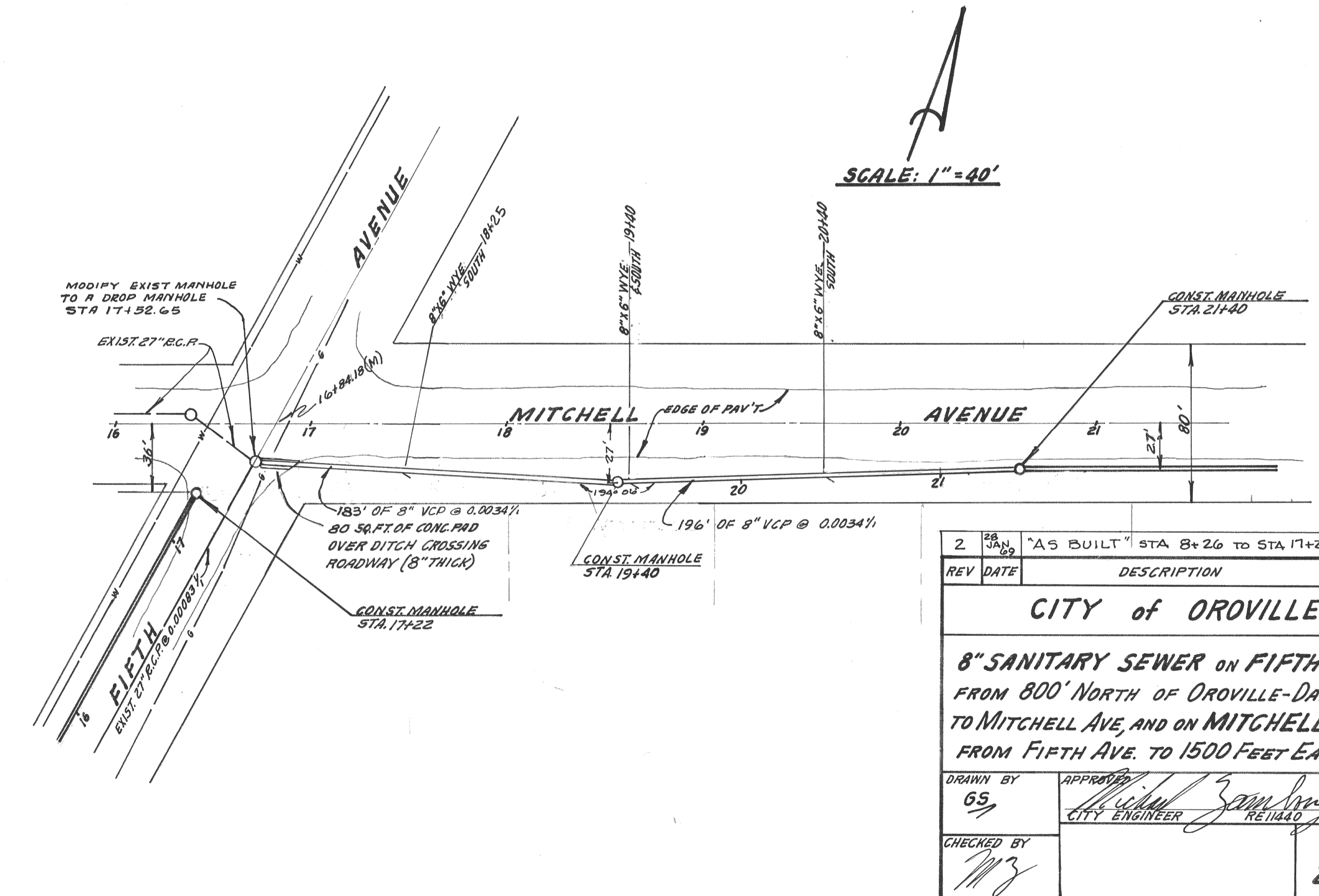


WARNING:
SHALLOW SEWER MAIN. CHECK ELEVATION
"BEFORE" POURING SLABS FOR BUILDINGS.

NOTE:
ALL WORK SHALL BE IN ACCORDANCE
WITH THE CITY OF OROVILLE
STANDARDS AND SPECIFICATIONS.



FROM STA 8+26 TO STA 17+22
FRONT FOOT CHARGE \$ 5.51
WEST SIDE 875 FEET OF FRONTAGE
EAST SIDE 938 " " "
1813 " " "
5.5137 SAY \$5.51 PER FRONT FOOT
1813 \$9996.40 (CONTRACT PRICE)



REV	DATE	DESCRIPTION	APPD BY
2	28 JAN 65	"AS BUILT" STA 8+26 TO STA 17+22	BAR

CITY OF OROVILLE

**8" SANITARY SEWER ON FIFTH AVE.
FROM 800' NORTH OF OROVILLE-DAM BLVD
TO MITCHELL AVE, AND ON MITCHELL AVE.
FROM FIFTH AVE. TO 1500 FEET EASTERLY**

DRAWN BY 65	APPROVED <i>Michael J. ...</i> CITY ENGINEER	DATE 6/12/67
CHECKED BY <i>MJ</i>	RETAINED	SHEET 2 OF 3