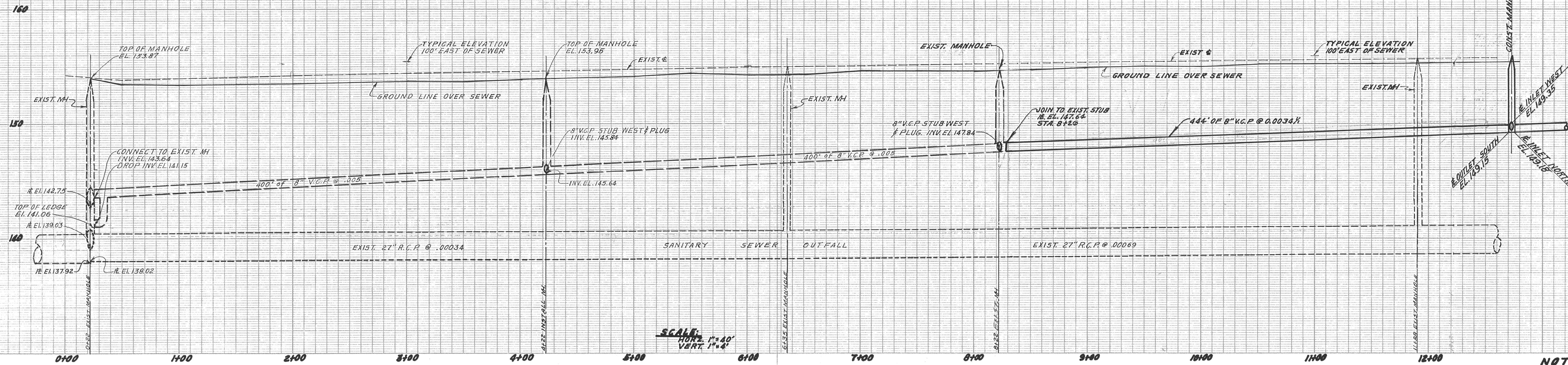
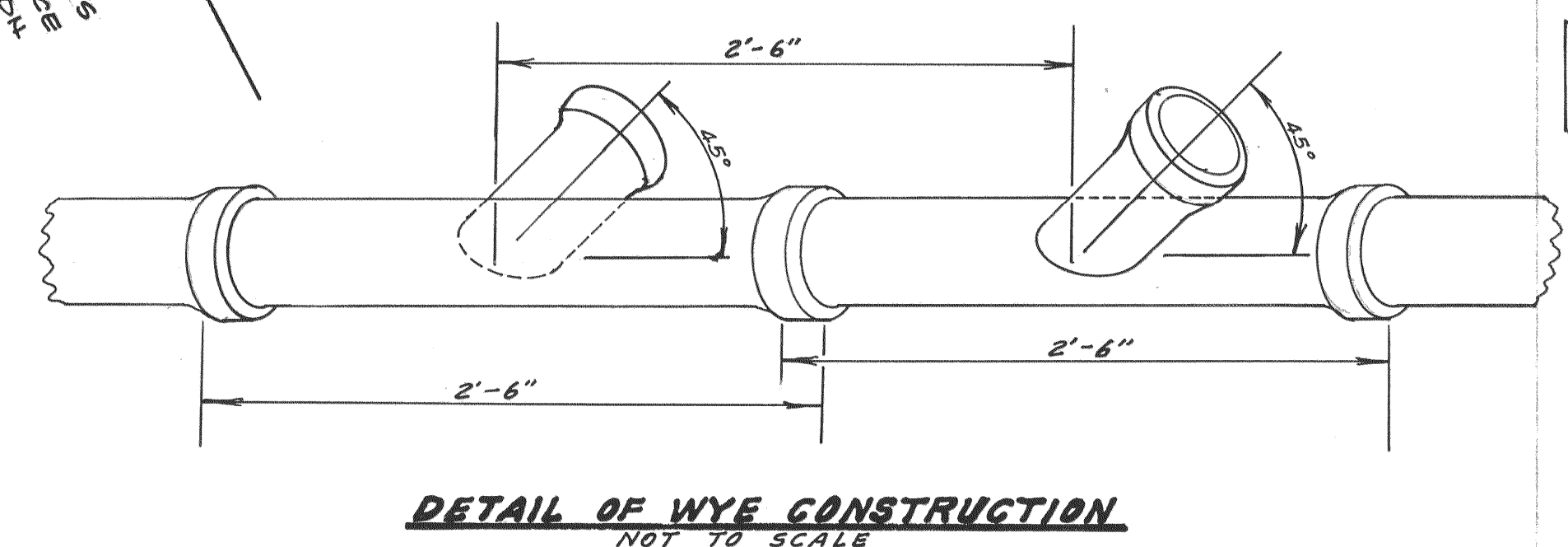
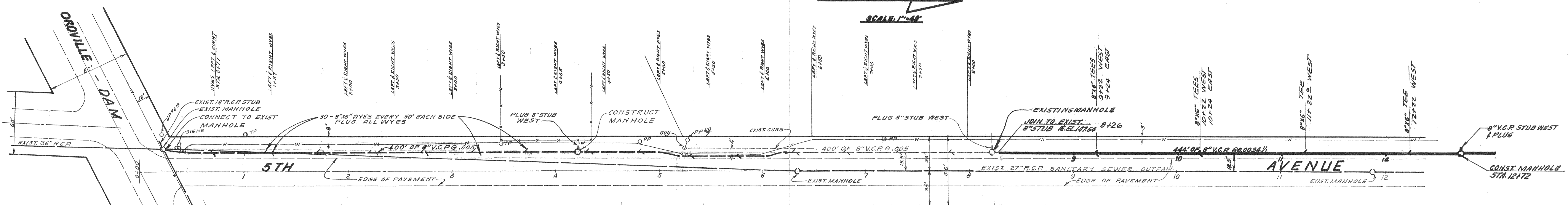


BENCH MARK
 NAIL IN W. N.E. CORNER OF
 5TH AVE & OROVILLE-DAM BLVD.
 ELEVATION 136.75



NOTE:
 ALL WORK SHALL BE IN ACCORDANCE
 WITH THE CITY OF OROVILLE
 STANDARDS AND SPECIFICATIONS.



FROM STA 8+26 TO STA 17+22
 FRONT FOOT CHARGE \$ 5.51
 SEE SHEET 2 OF 3 FOR FORMULA

FROM STA 0+00 TO 8+26
 FRONT FOOT CHARGE: \$ 7.42
 WEST SIDE: 822 FEET OF FRONTAGE
 125 LESS TRAILER PARK
 (ALREADY CONNECTED)
 697 FEET
 EAST SIDE: 160 FEET OF FRONTAGE
 200 LESS EXISTING SUBDIVISION LOT
 SERVICED FROM OROVILLE DAM BLVD.
 560 FEET

697
 560
 1,257

7.42 SAY \$ 7.42 PER FRONT FOOT
 19,325.0 (CONTRACT PRICE)

2	25 JAN 09	"AS BUILT" STA 8+26 TO STA 17+22	BAB
1	25 MAR 09	"AS BUILT" TO STA 8+26	GS
REV	DATE	DESCRIPTION	APPD. BY
CITY OF OROVILLE			
8" SANITARY SEWER ON FIFTH AVE FROM 800' NORTH OF OROVILLE-DAM BLVD TO MITCHELL AVE, AND ON MITCHELL AVE FROM FIFTH AVE TO 1500 FEET EASTERLY			
DRAWN BY	APPROVED	DATE	
63	<i>[Signature]</i>	4/9/04	
CHECKED BY	CITY ENGINEER	RE 11430	
<i>[Signature]</i>			SHEET
			1 OF 3