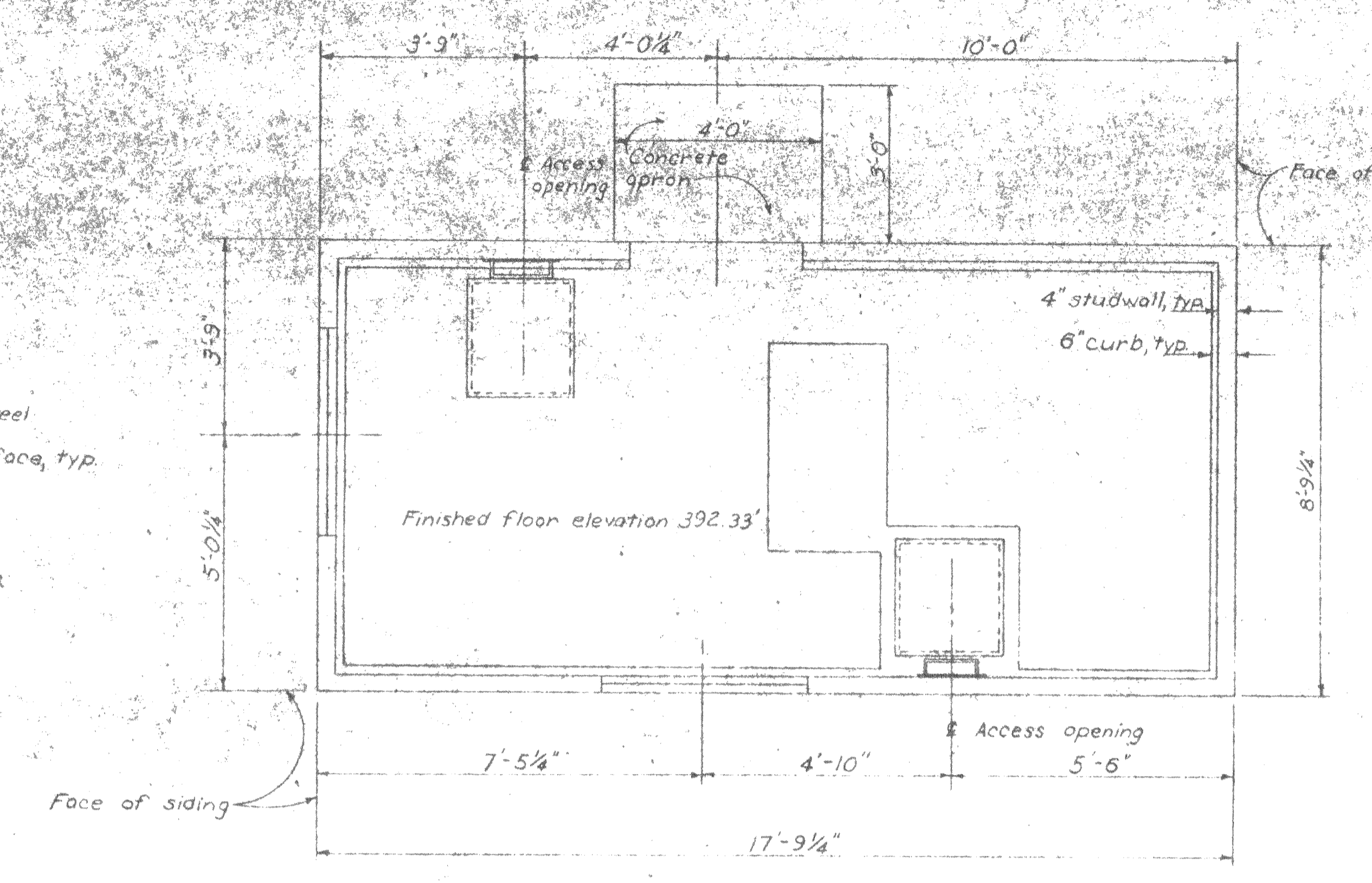
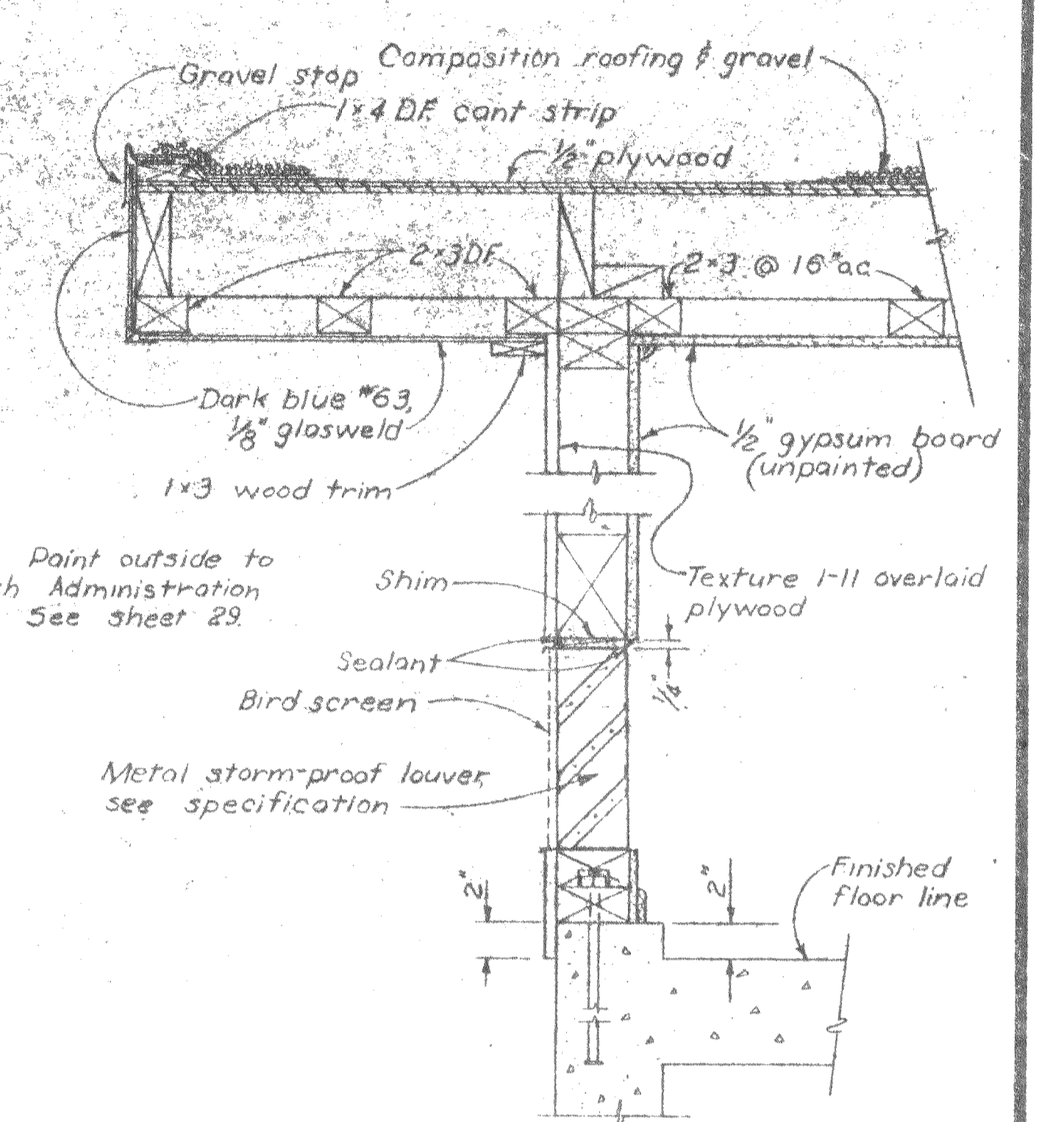


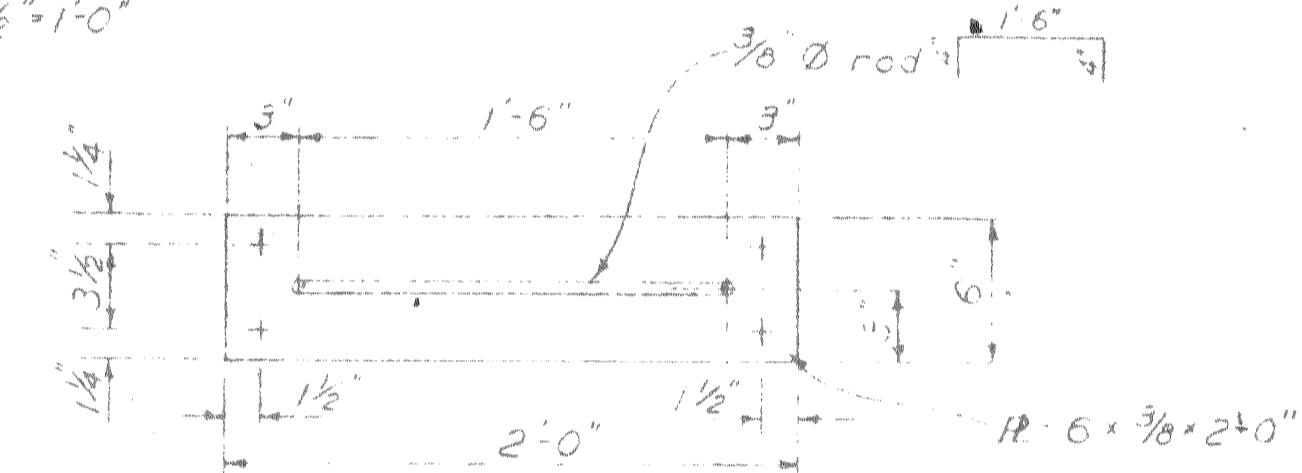
ROOF FRAMING PLAN
Scale: 1/2" = 1'-0"



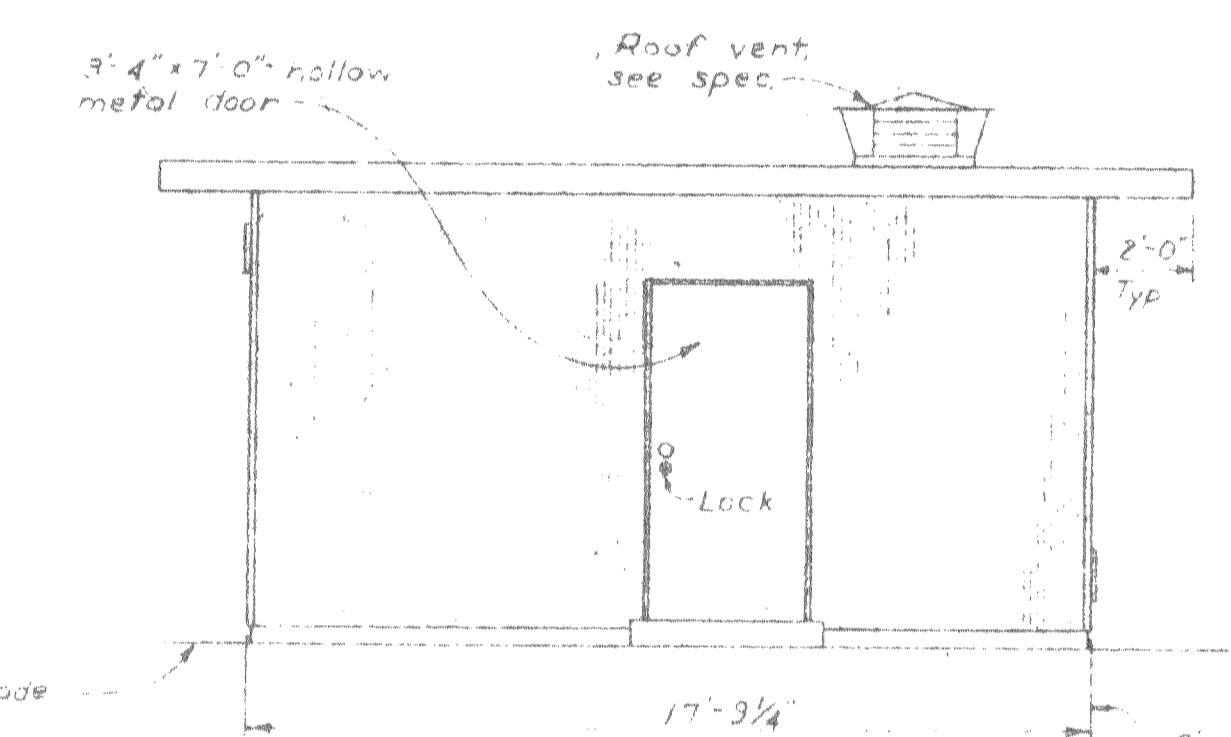
FLOOR PLAN
Scale: 1/2" = 1'-0"



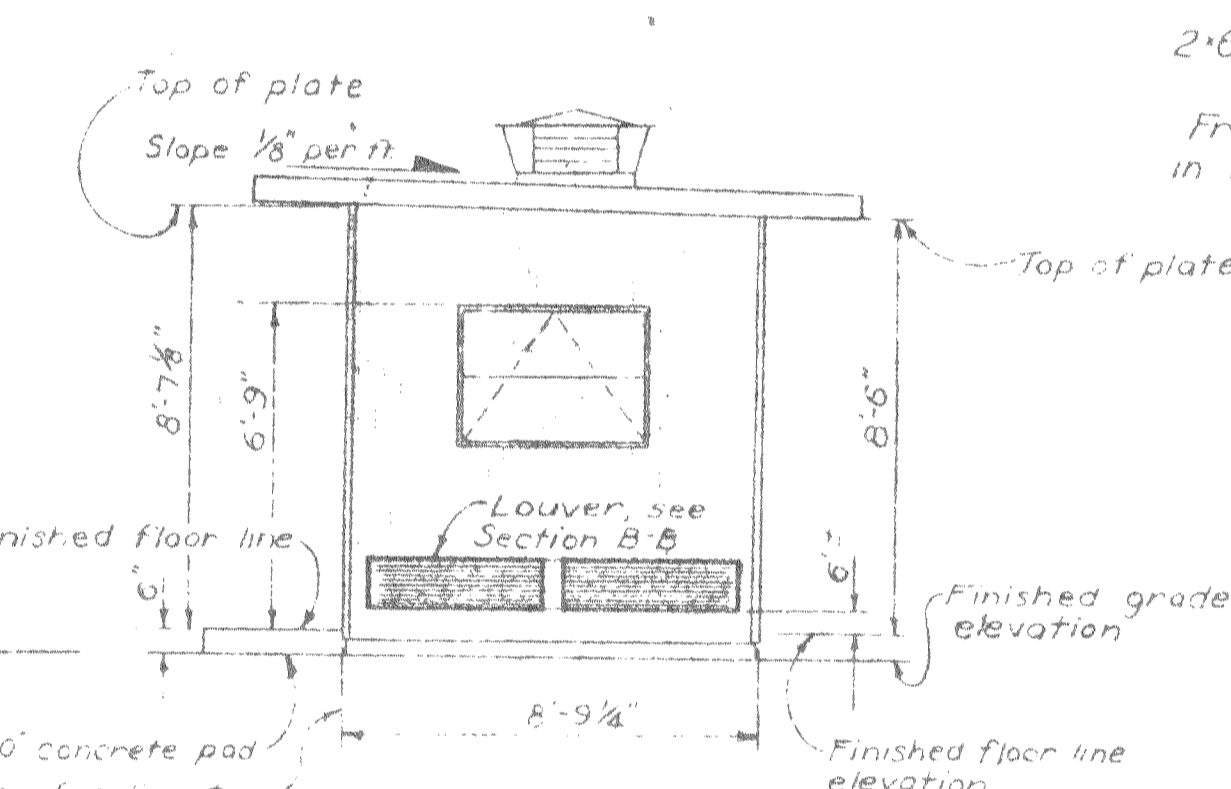
SECTION B-B
Scale: 1/2" = 1'-0"



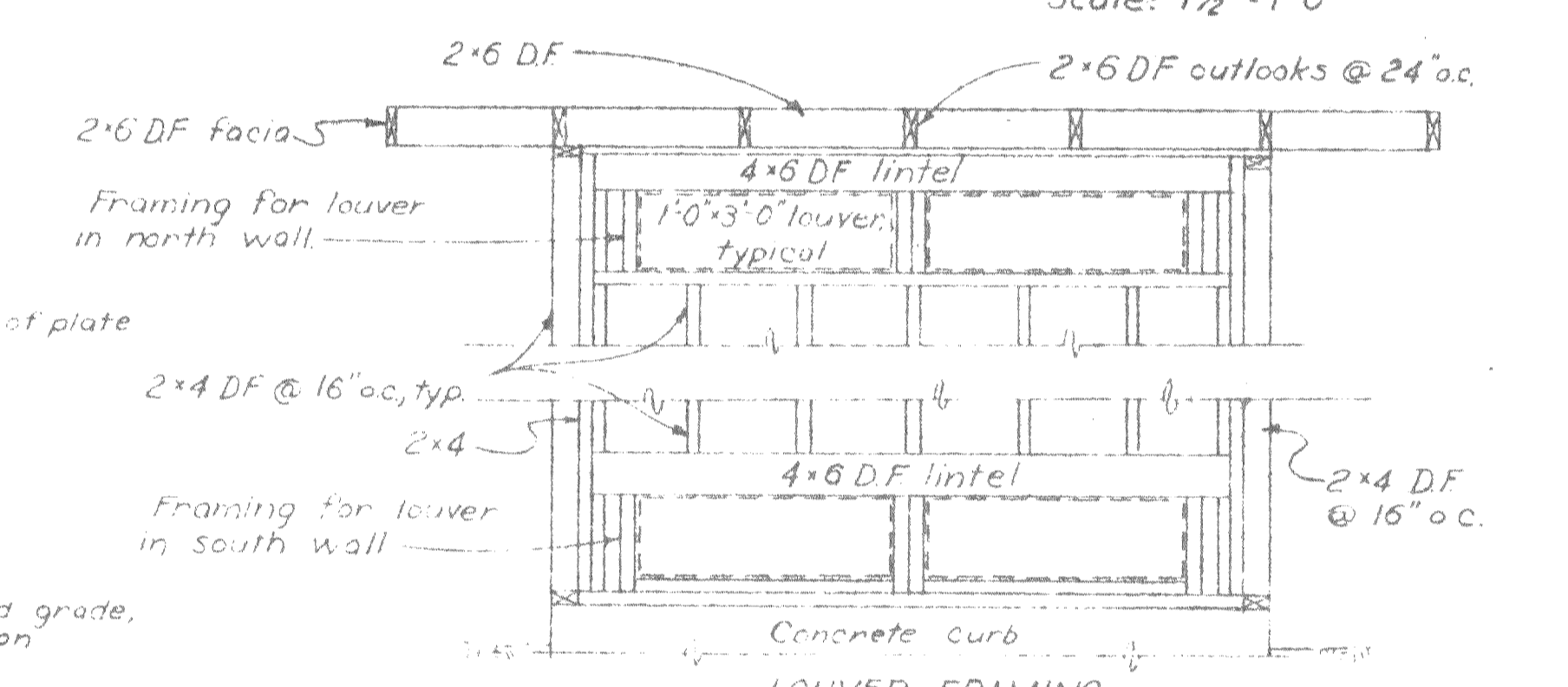
DETAIL G
Scale: 1/2" = 1'-0"



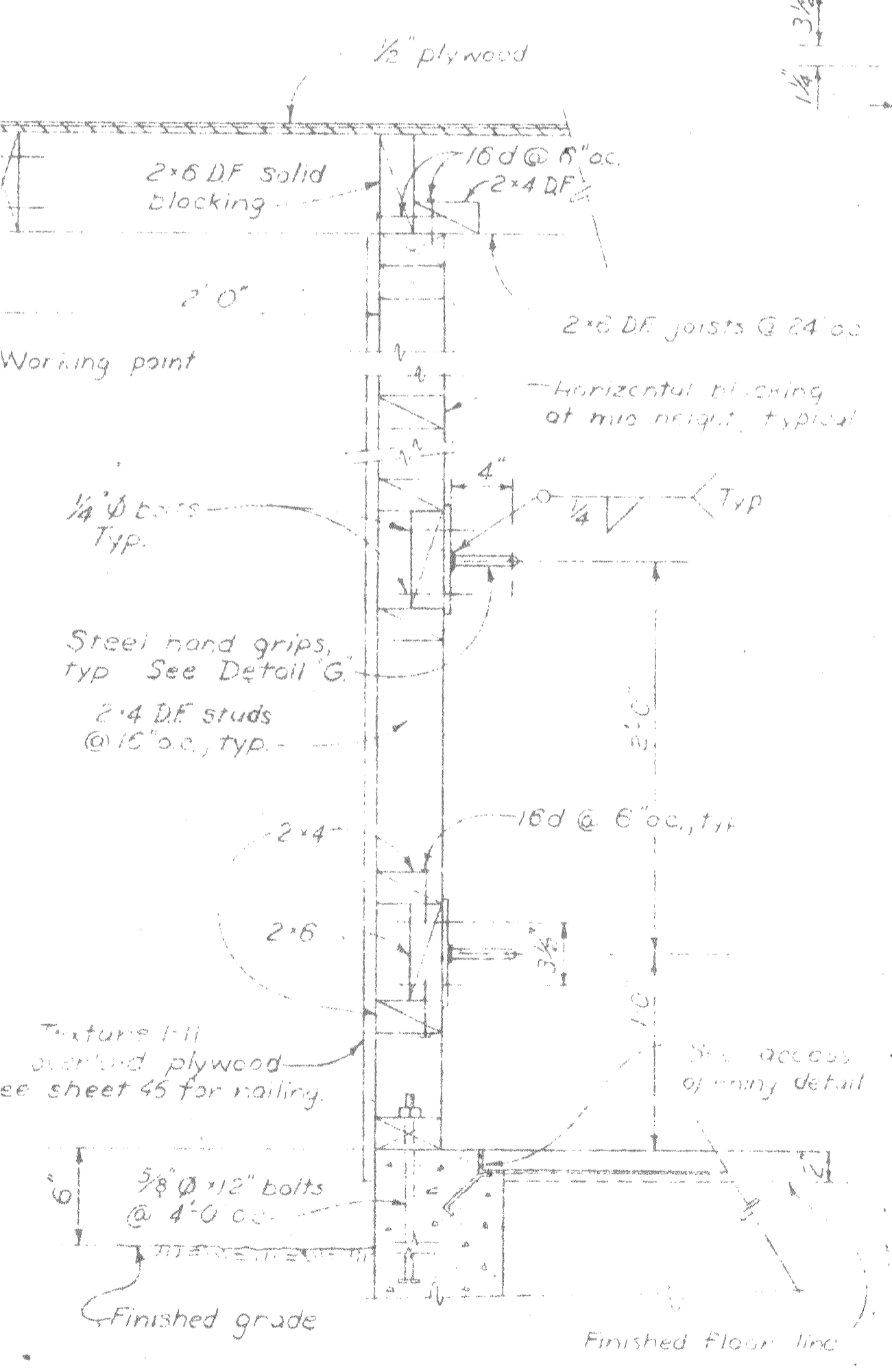
WEST ELEVATION
Scale: 1/4" = 1'-0"



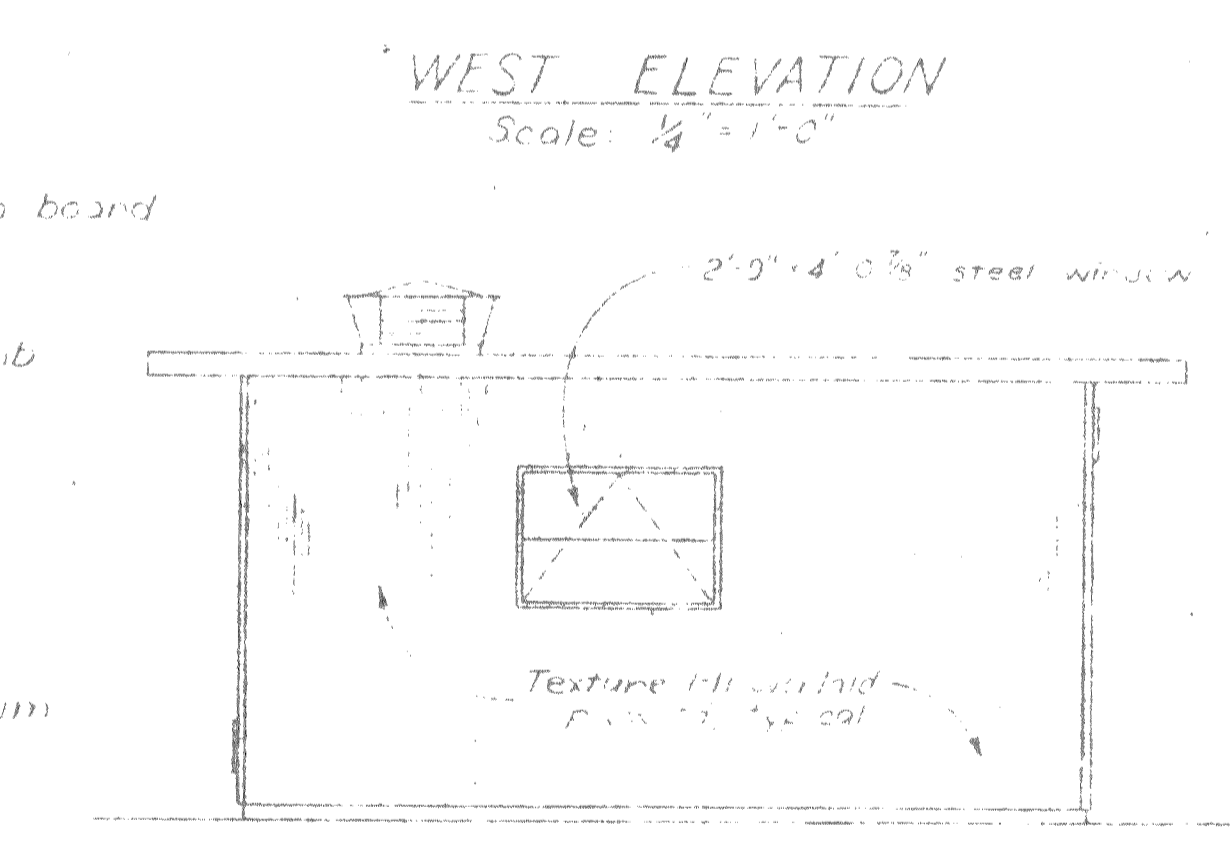
SOUTH ELEVATION
Scale: 1/4" = 1'-0"



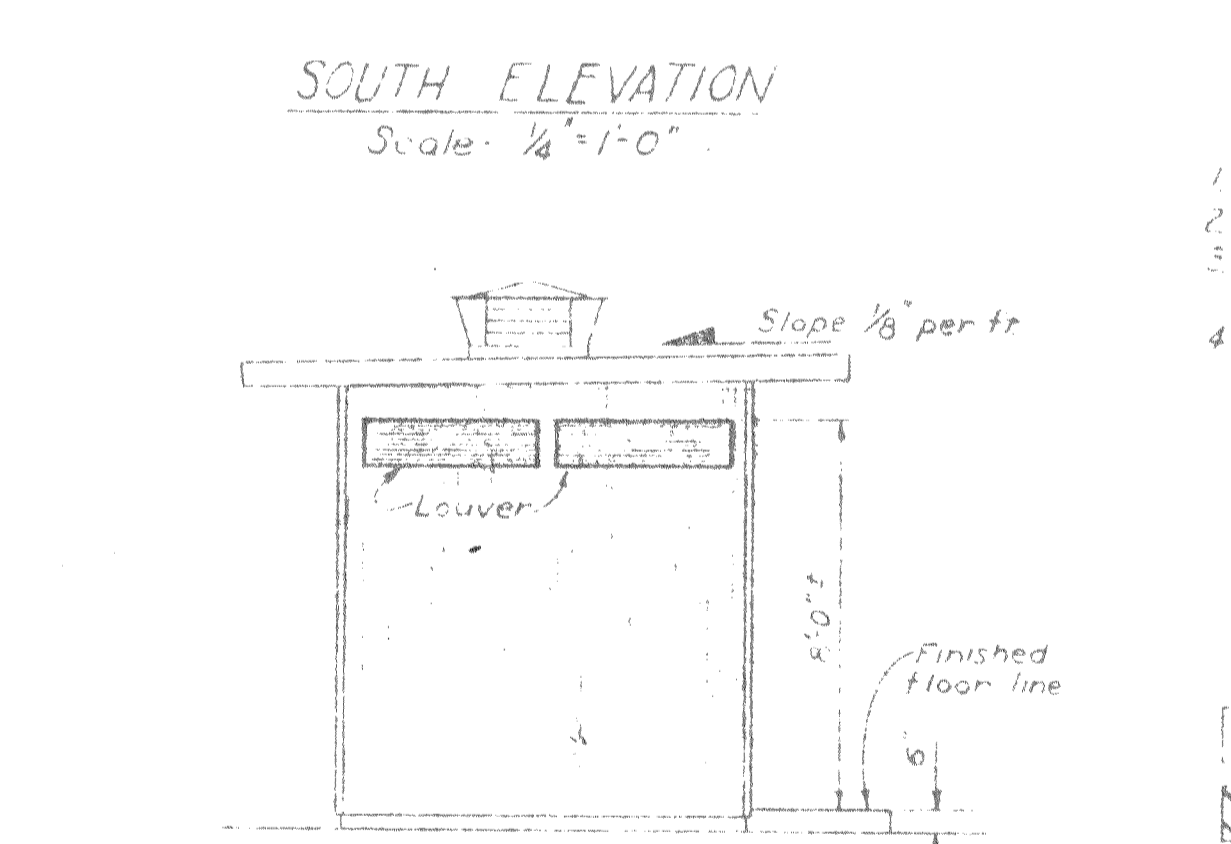
SECTION C-C
Scale: 1/2" = 1'-0"



SECTION A-A
Scale: 1/2" = 1'-0"



EAST ELEVATION
Scale: 1/4" = 1'-0"

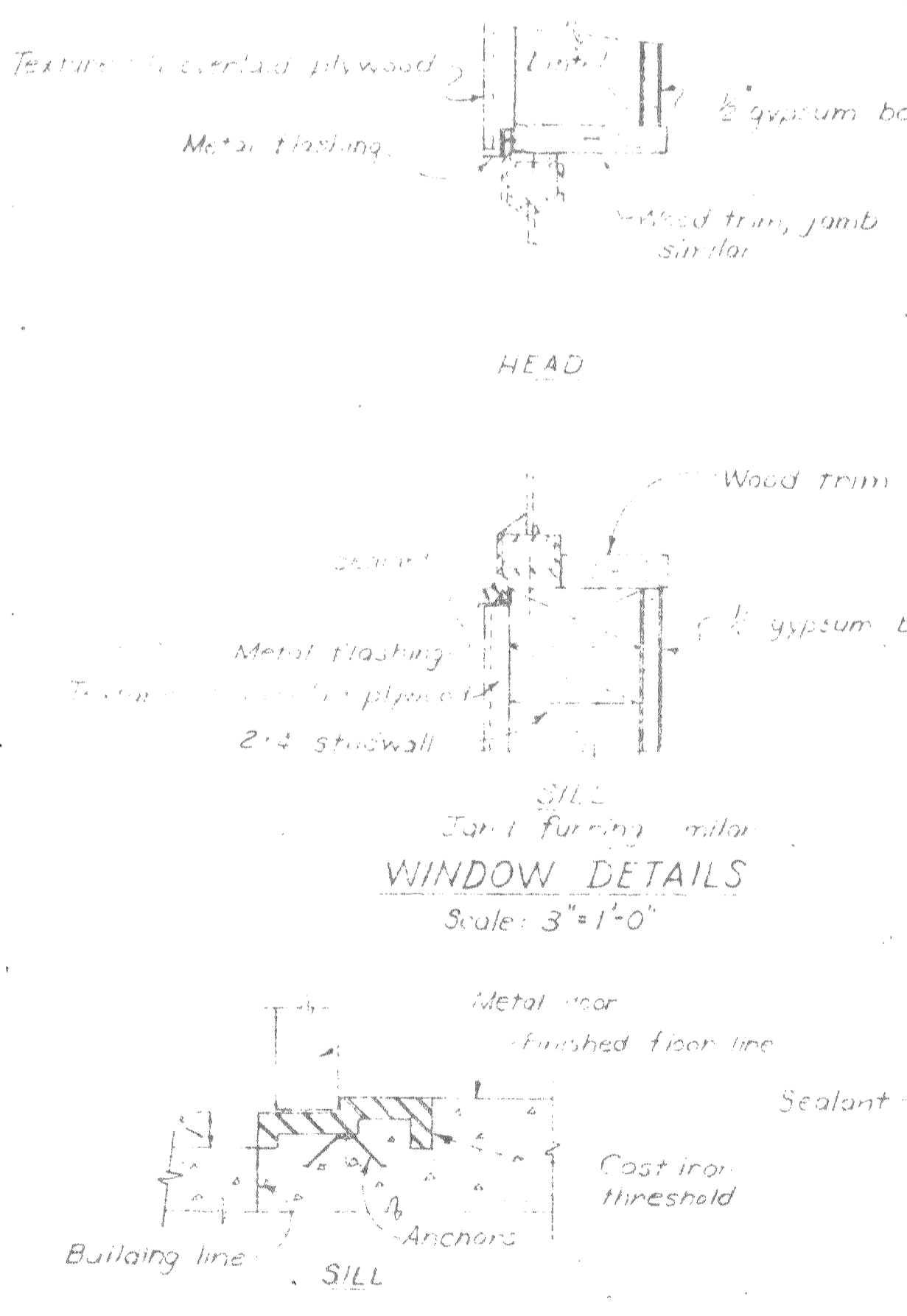
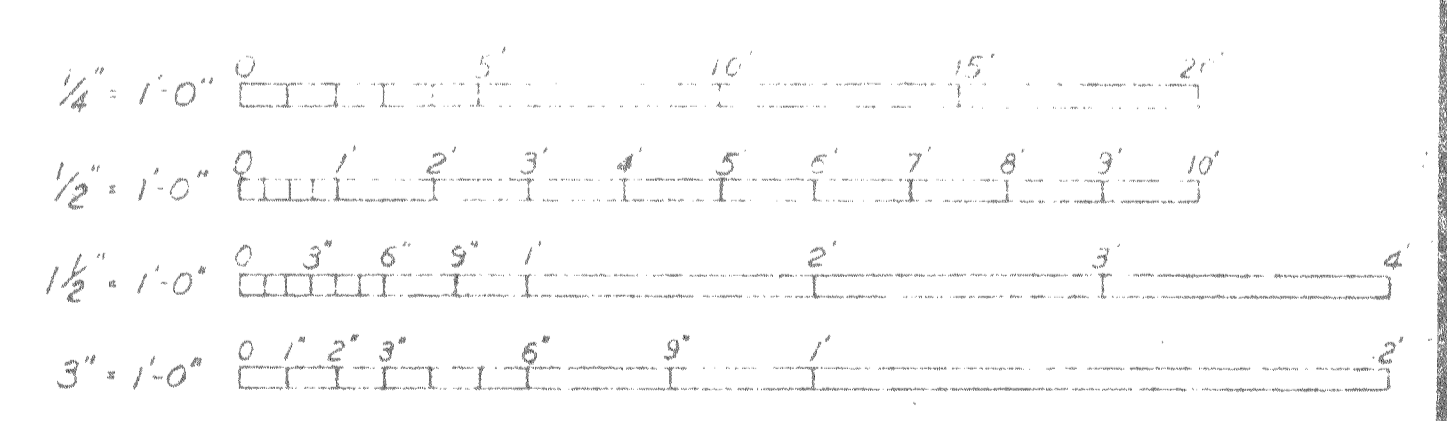


NORTH ELEVATION
Scale: 1/4" = 1'-0"

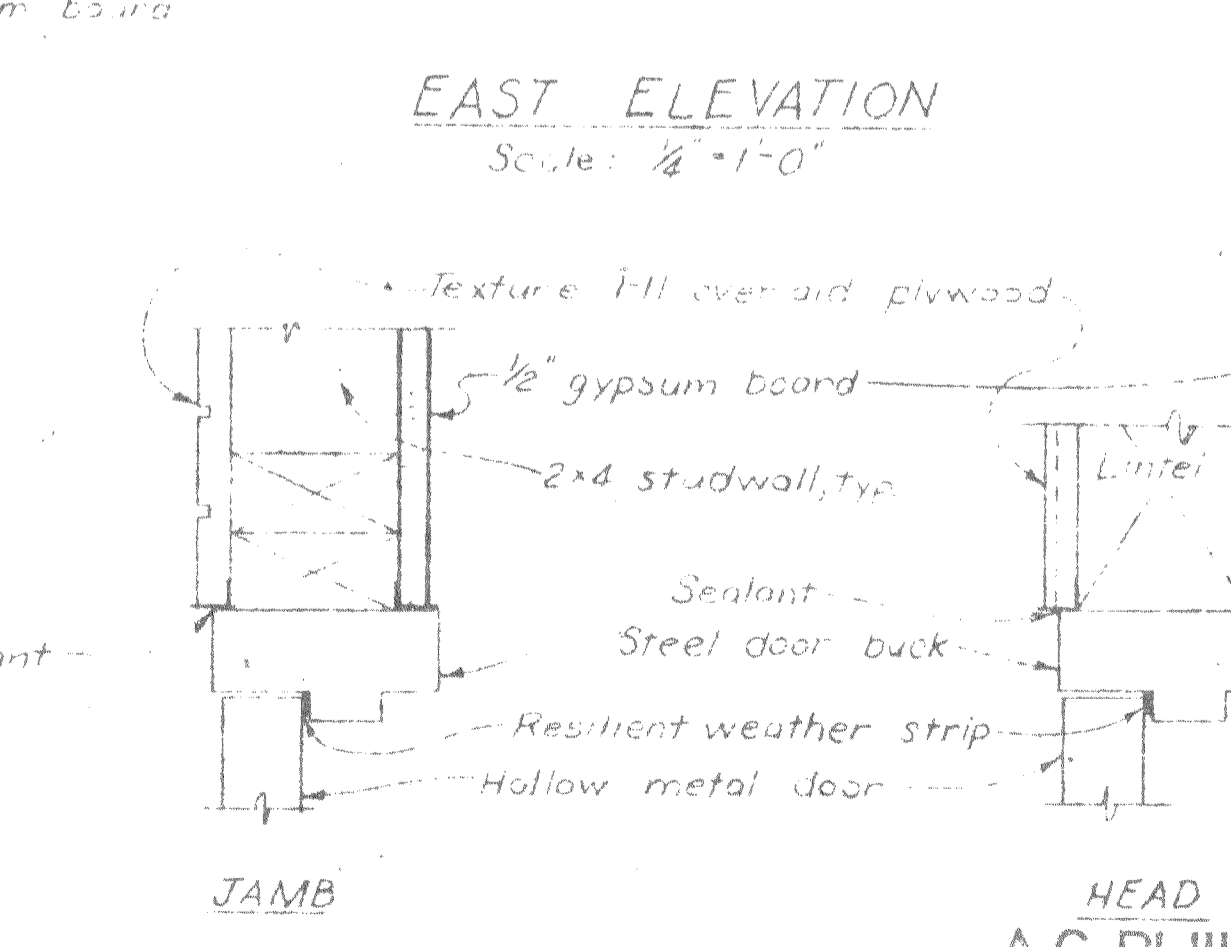
GENERAL NOTES

- 1. For all wood details and nailing schedules see sheet 46.
- 2. All nails for structural work shall be common wire nails.
- 3. Nailing not noted on drawings shall be a minimum of 2 nails at each contact for 1" material and 16d for 2" material.
- 4. See specifications for grading of all framing lumber.

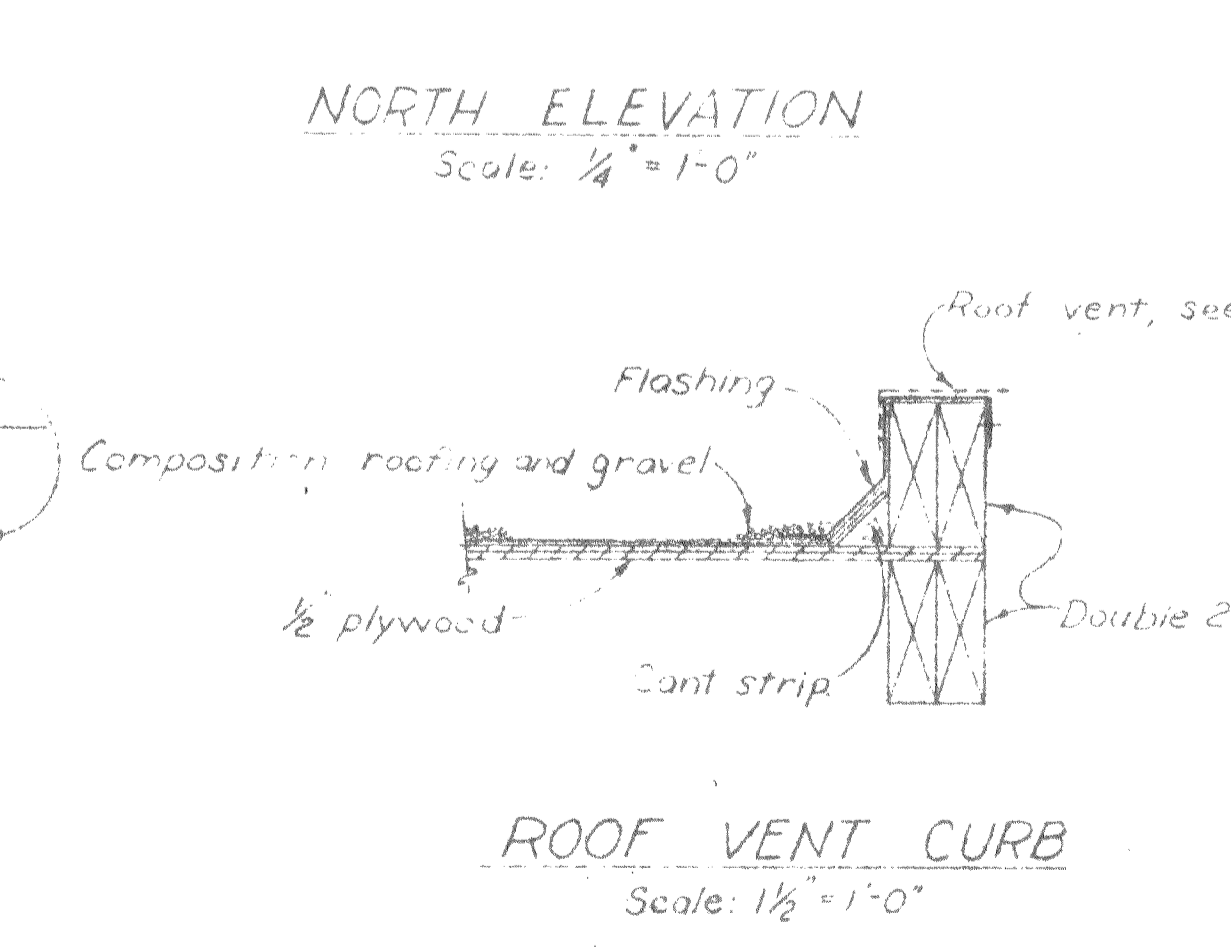
- [Symbol] Concrete in section
- [Symbol] Continuous wood member
- [Symbol] Steel in section
- [Symbol] Wood blocking



WINDOW DETAILS
Scale: 3" = 1'-0"



DOOR DETAILS
Scale: 3" = 1'-0"



ROOF VENT CURB
Scale: 1/2" = 1'-0"

AS BUILT
John Sander
Resident Engineer DATE 12-9-65
A. J. Walker
Project Engineer DATE 12-15-65

STATE OF CALIFORNIA
RESOURCES AGENCY OF CALIFORNIA
DEPARTMENT OF WATER RESOURCES
DIVISION OF DESIGN AND CONSTRUCTION

STATE WATER FACILITIES
OROVILLE DIVISION
CONSTRUCTION HEADQUARTERS
SEWAGE LIFT STATION
STRUCTURAL AND ARCHITECTURAL DETAILS

Sheet 4 of 8

SUBMITTED: Arthur Bunker
APPROVED: DATE: AUG 27 1962
DIVISION ENGINEER REG. C.E. NO. 6900

REV.	DATE	DESCRIPTION	SUB.	APP'D.
Schoolcraft	3-30-64	Schoolcraft	4-6-62	F.H.H.
			5-62	Owen
			8-14	

APPROVAL RECOMMENDED:
DEPUTY DIVISION ENGINEER

DRAWING NO. **A-12G10-SS-260**