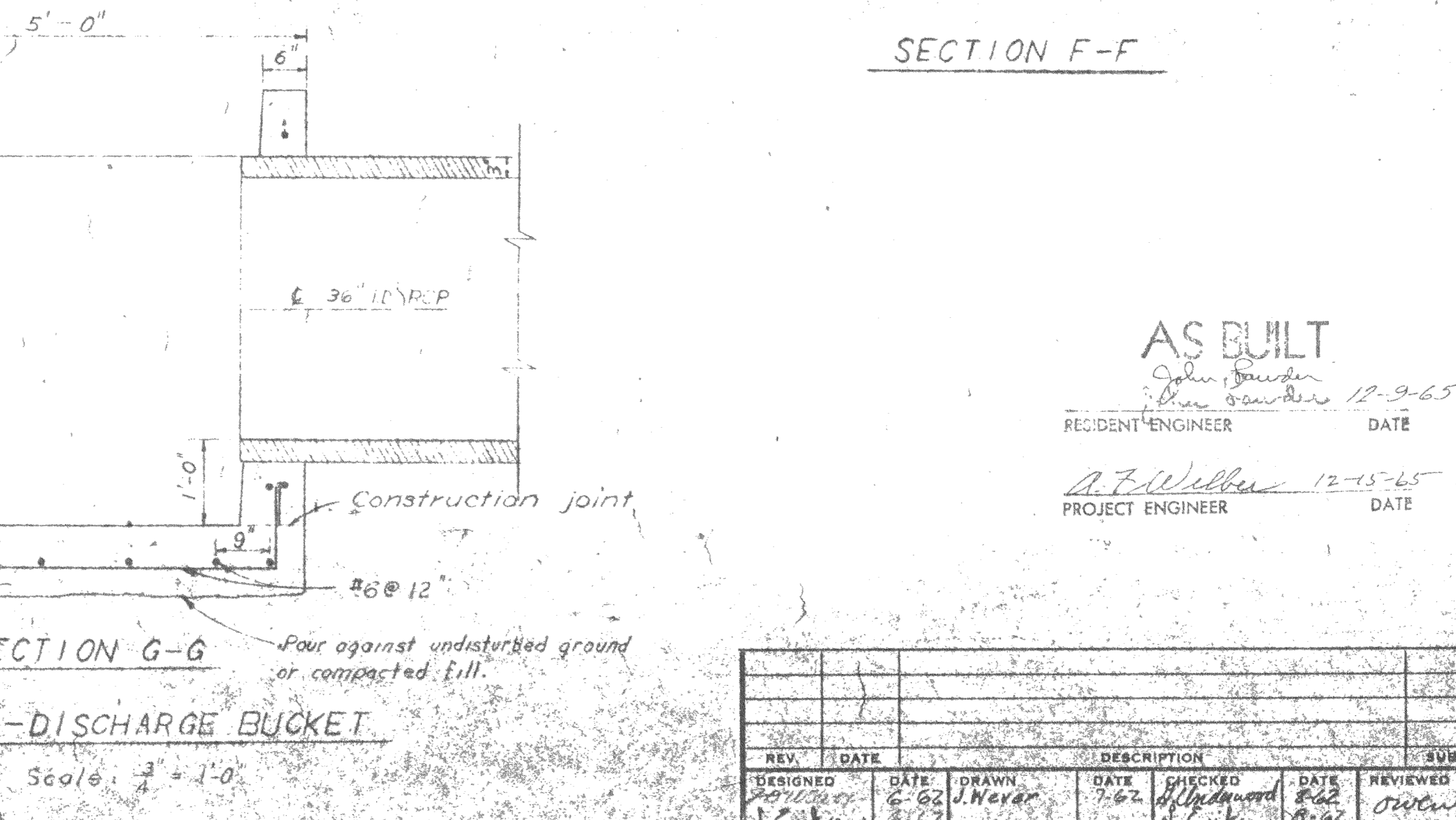
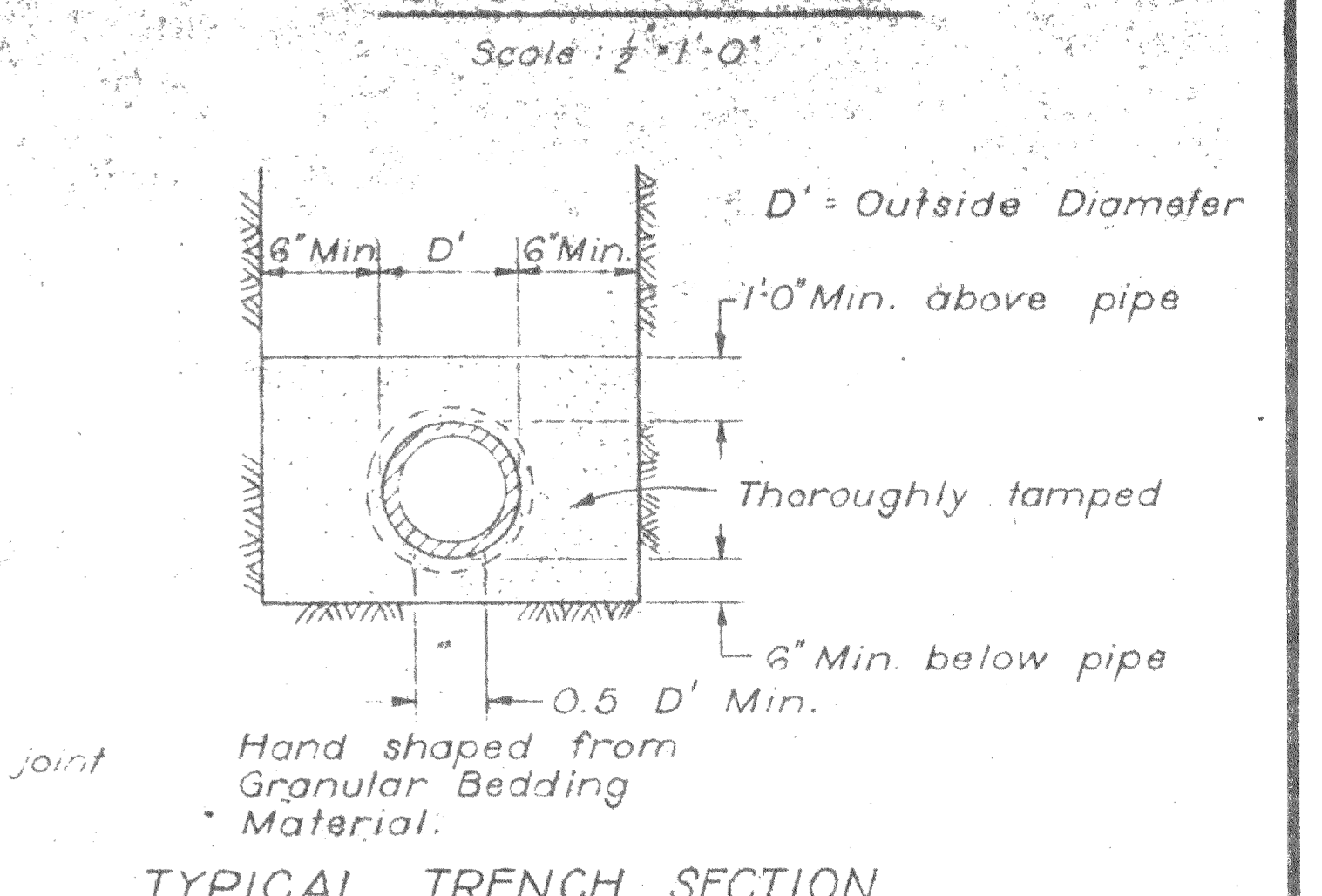
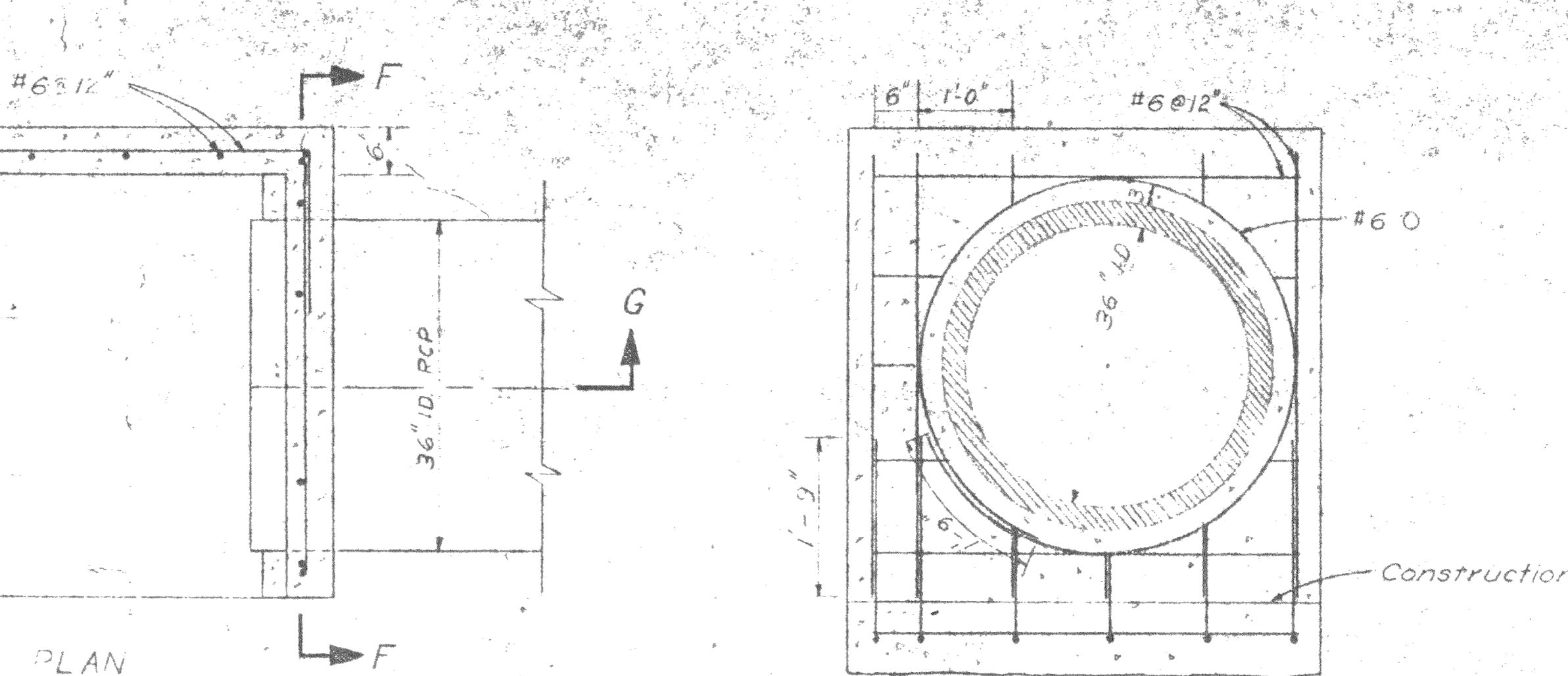
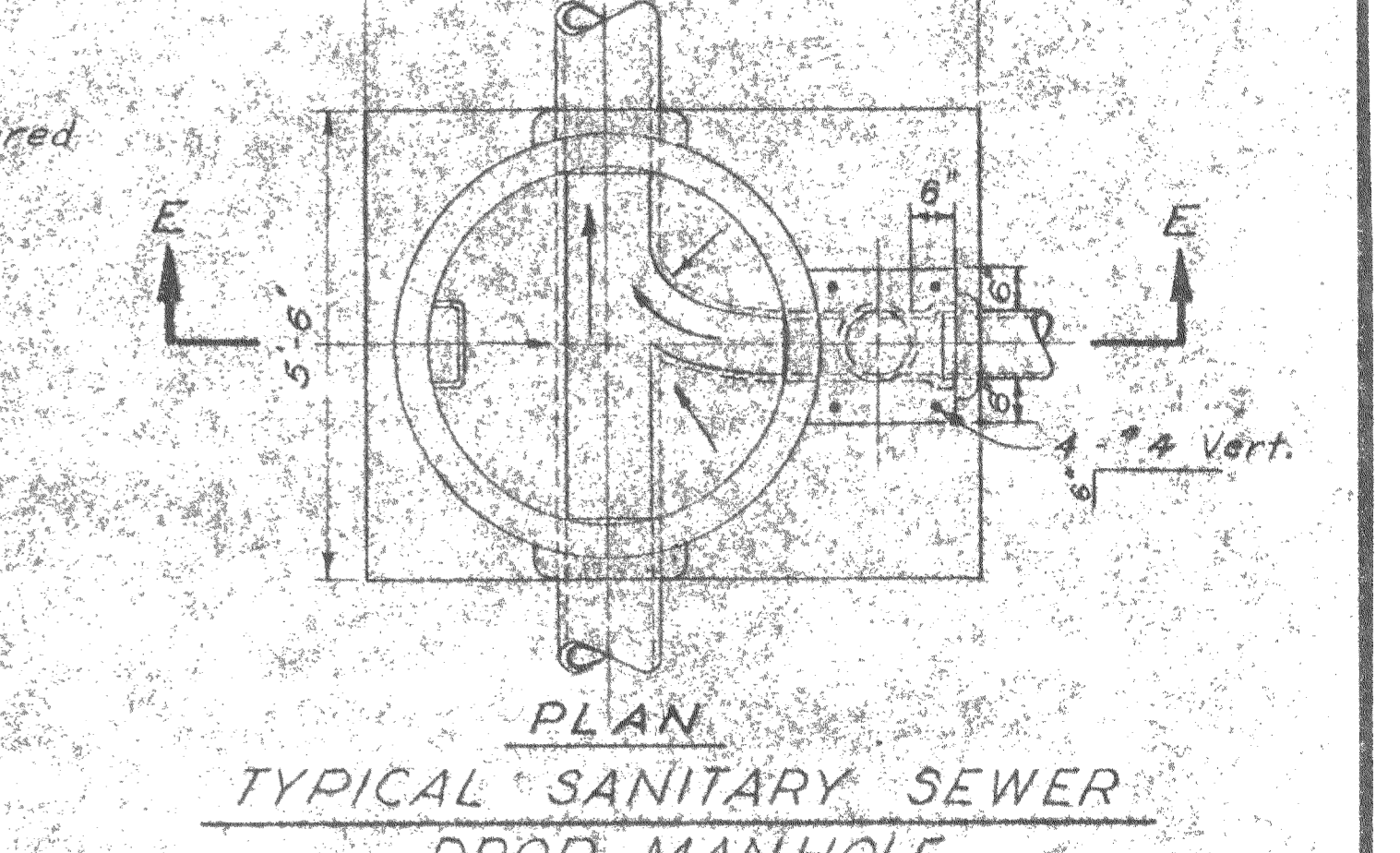
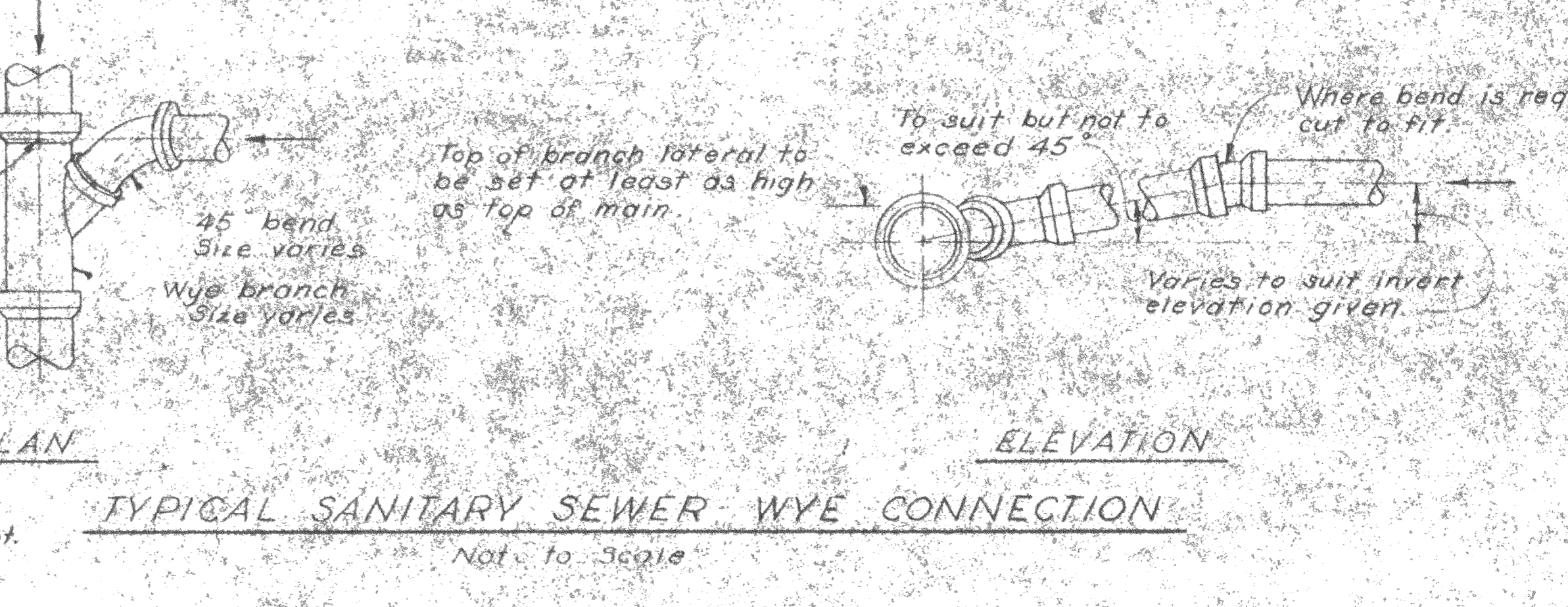
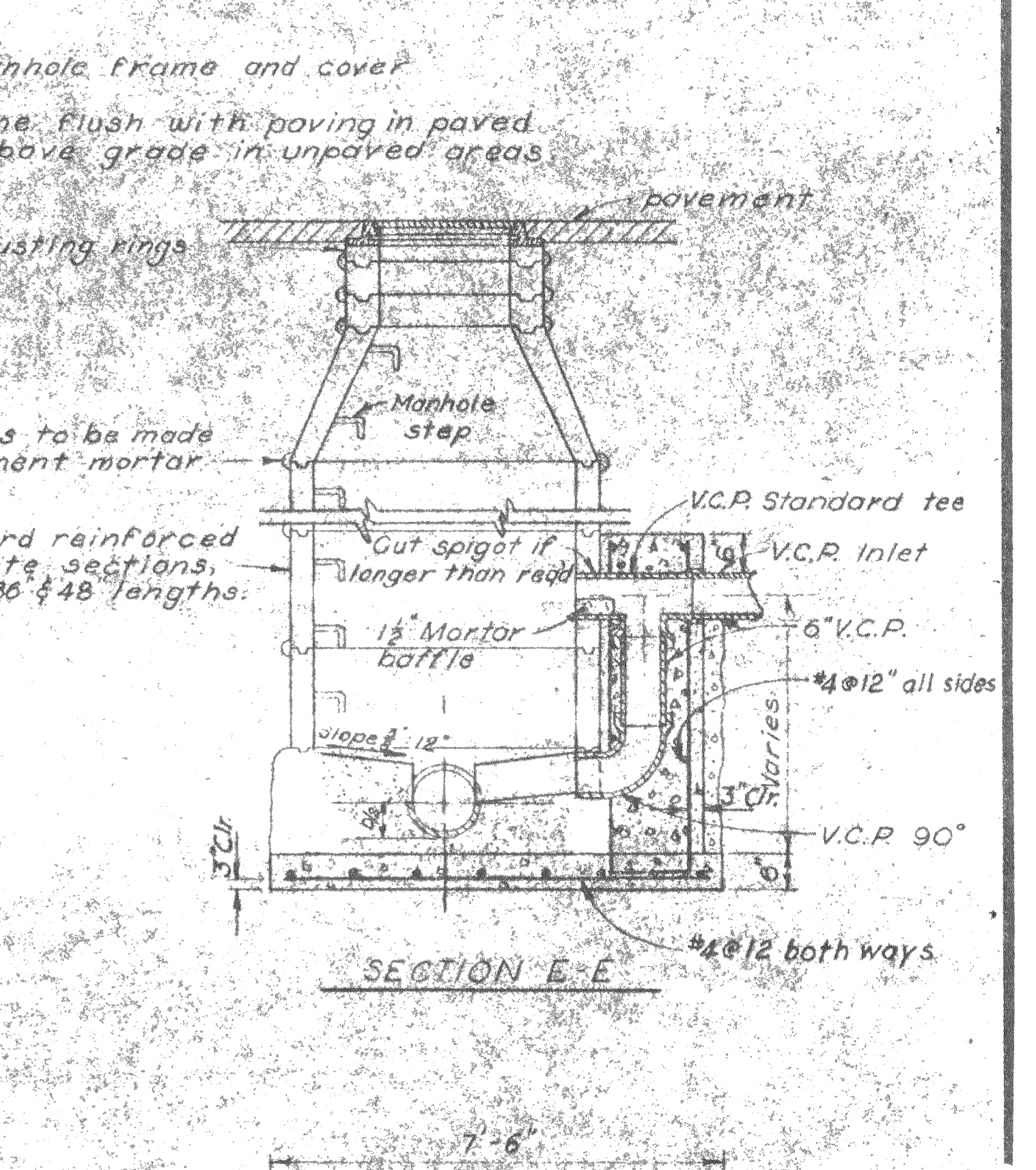
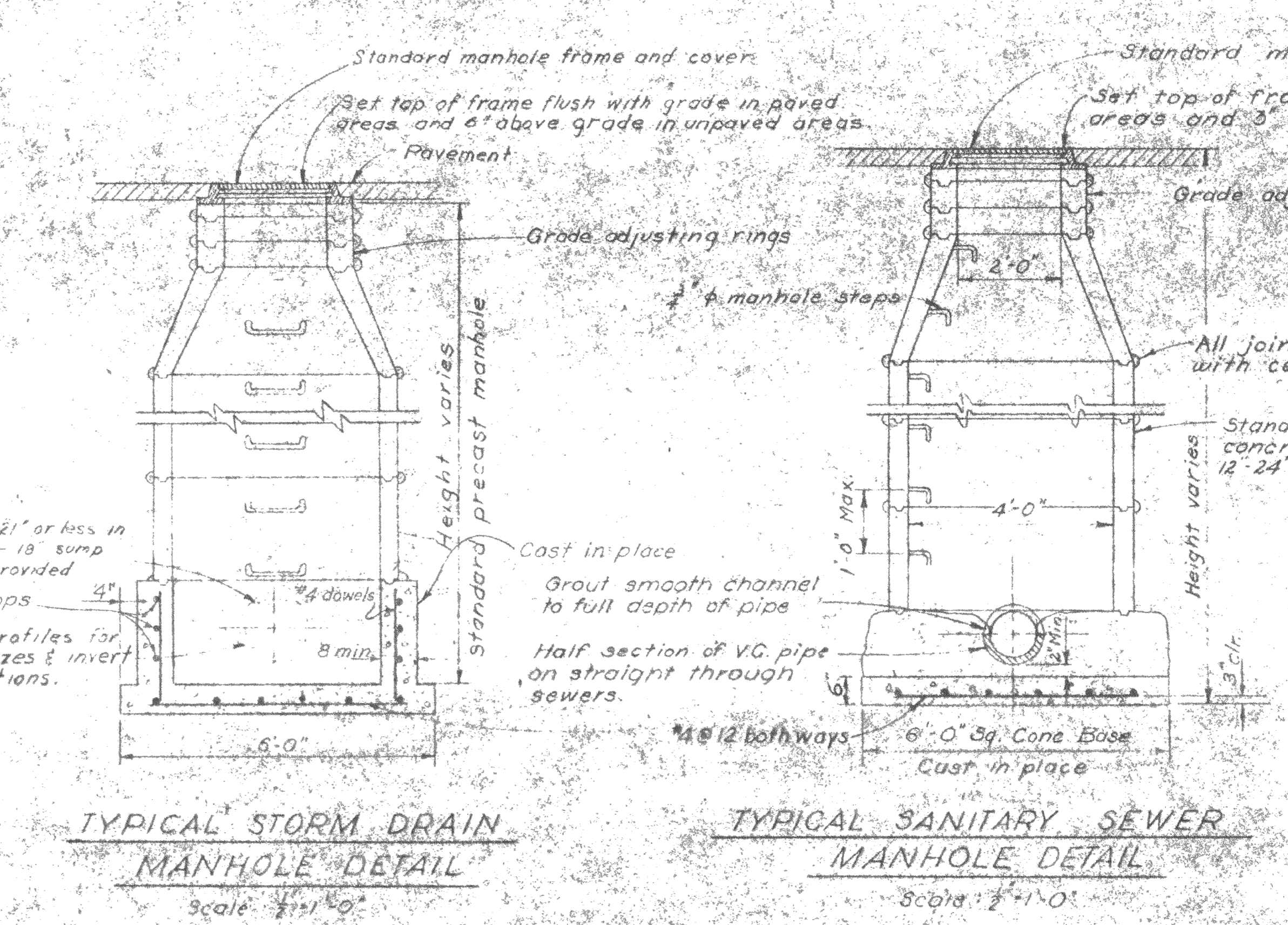
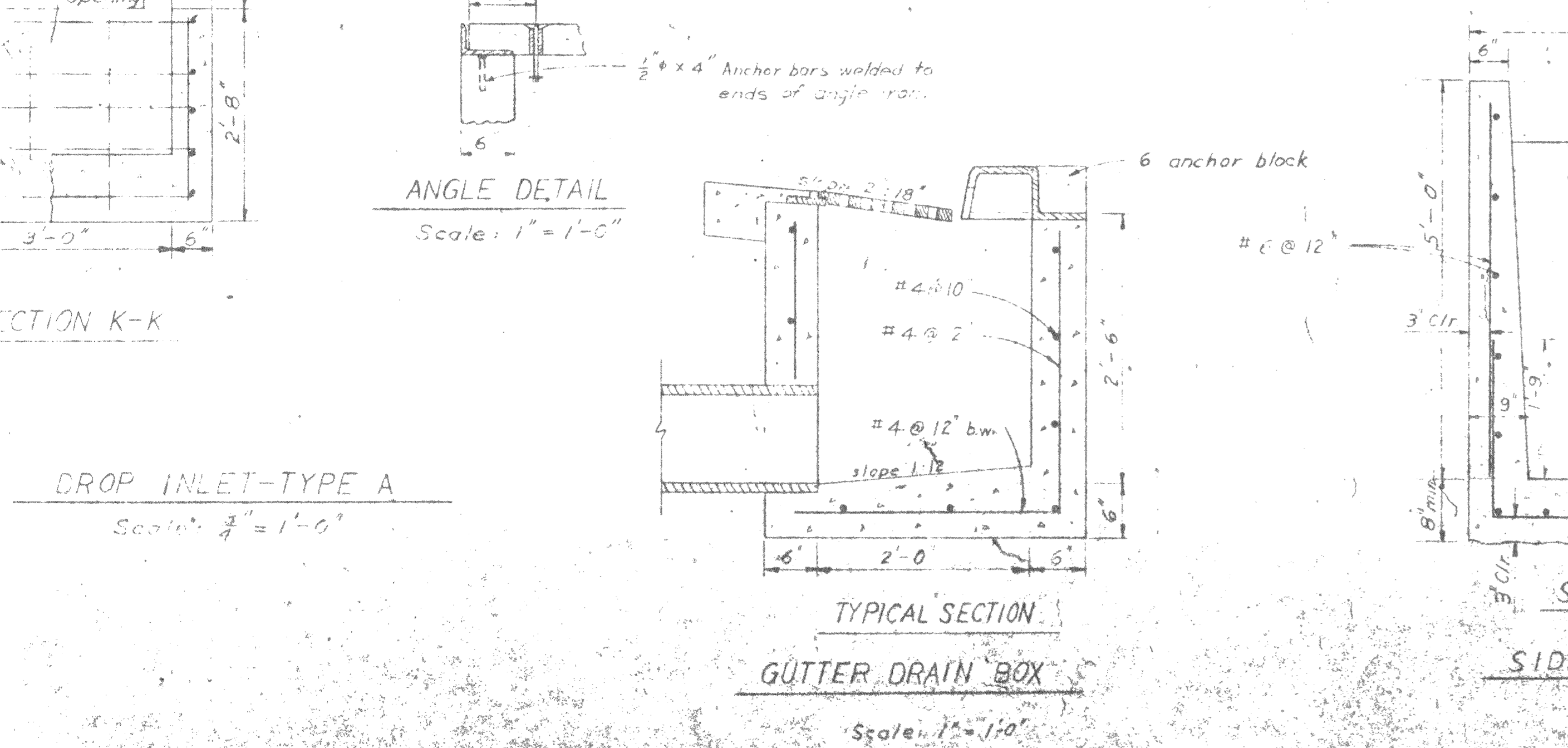
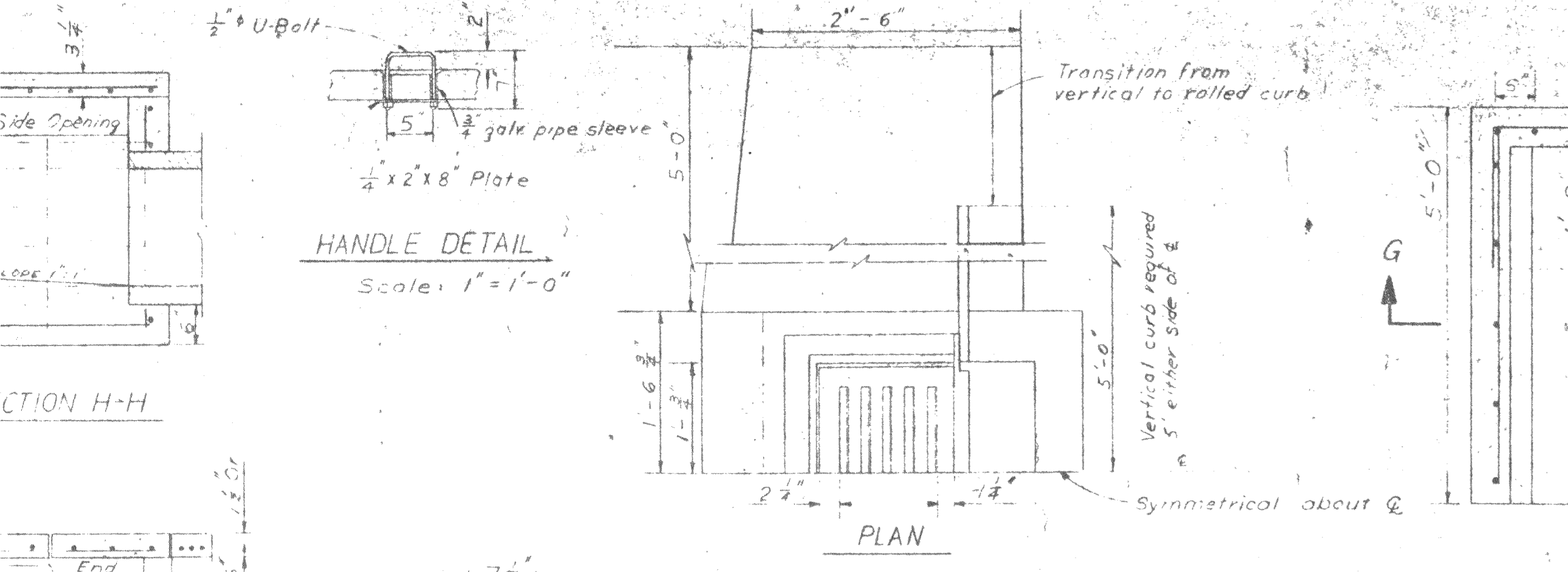
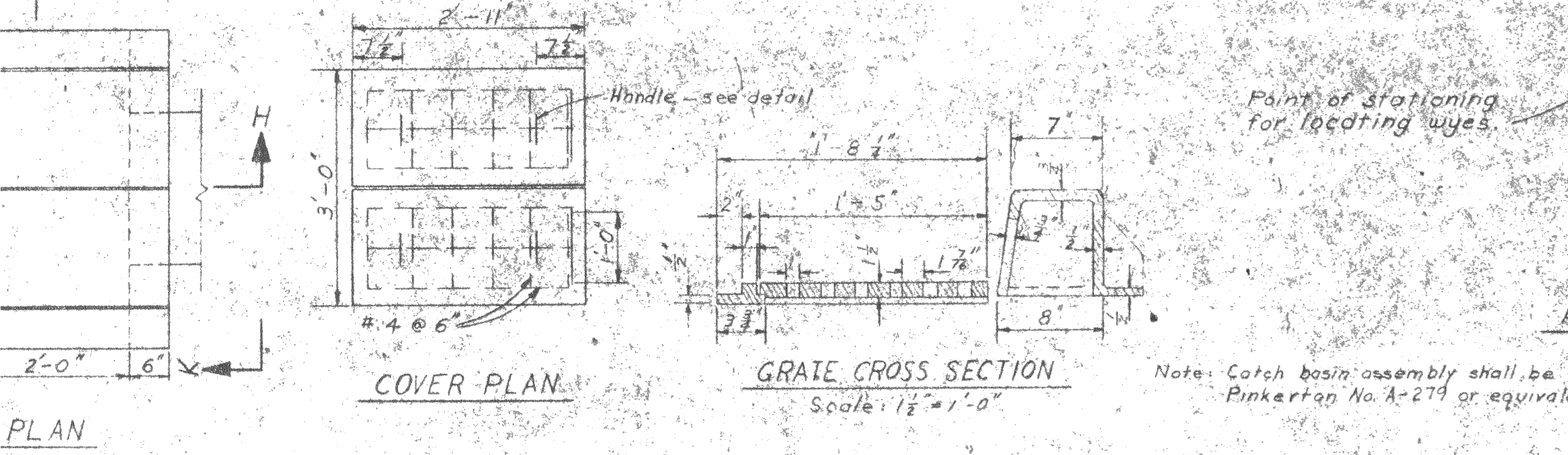


TYPICAL SANITARY SEWER MANHOLE BOTTOM DETAILS
Not to Scale



AS BUILT
John Gaudin
12-9-65
PROJECT ENGINEER DATE

A.F. Walker
12-15-65
PROJECT ENGINEER DATE

STATE OF CALIFORNIA
RESOURCES AGENCY OF CALIFORNIA
DEPARTMENT OF WATER RESOURCES
DIVISION OF DESIGN AND CONSTRUCTION

STATE WATER FACILITIES
OROVILLE DIVISION
CONSTRUCTION HEADQUARTERS
STORM DRAIN AND SANITARY
SEWER DETAILS
Sheet 3 of 8

APPROVED: [Signature]
DATE: AUG 27 1962

REV.	DATE	DESCRIPTION	CHKD.	DATE	APPROVED
DESIGNED	DATE	DRAWN	CHECKED	DATE	REVIEWED
J. Zuker	6-62	J. Wexler	W. Gaudin	8-62	8-14

DESIGNED: J. Zuker
DATE: 6-62
DRAWN: J. Wexler
CHECKED: W. Gaudin
DATE: 8-62
REVIEWED: [Signature]
DATE: 8-14

APPROVAL RECOMMENDED:
[Signature]
DIVISION ENGINEER, RESOURCES AGENCY OF CALIFORNIA

APPROVAL RECOMMENDED:
[Signature]
DIVISION ENGINEER, RESOURCES AGENCY OF CALIFORNIA

DRAWING NO. A-12G6 SS-260