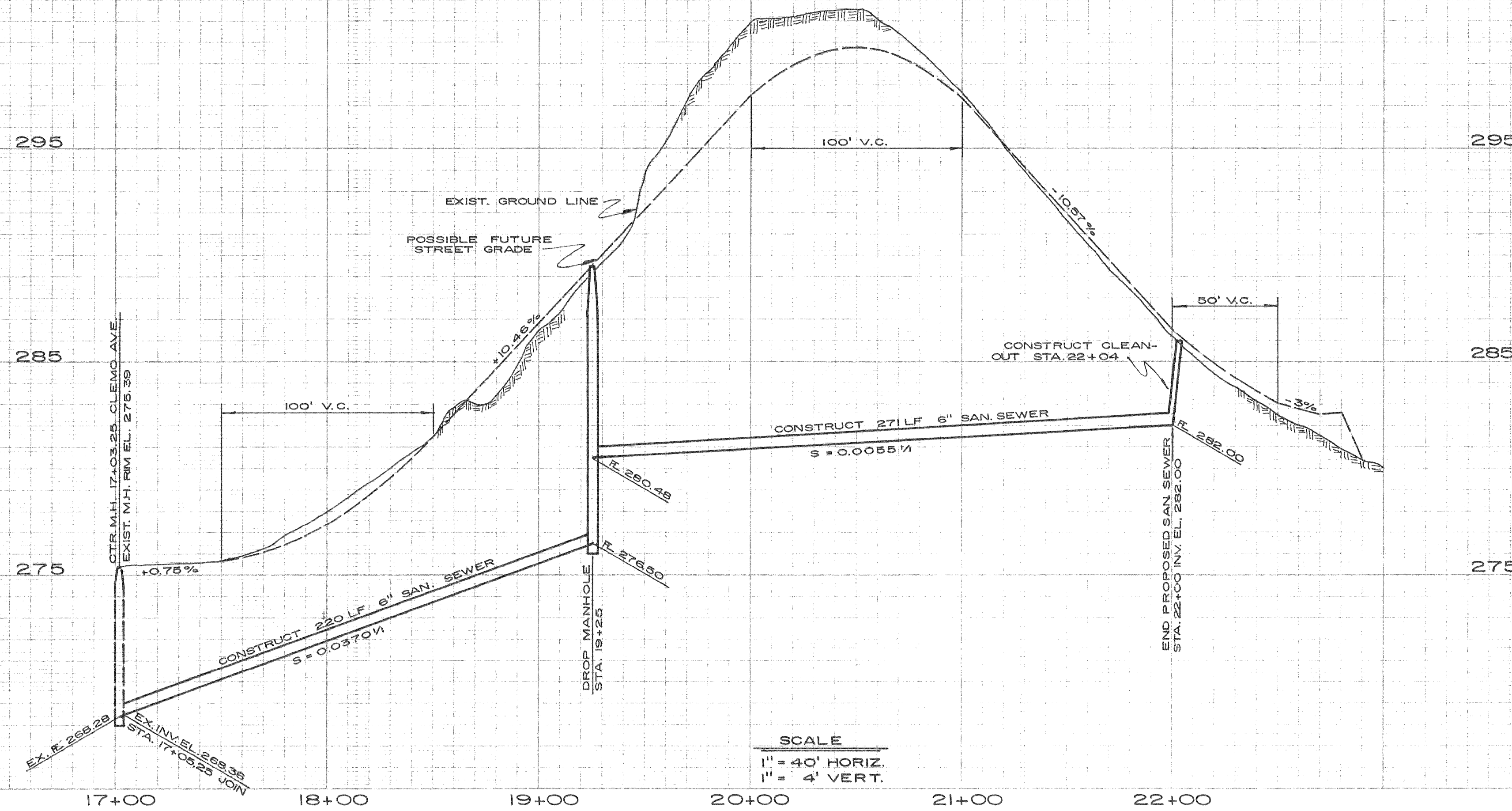
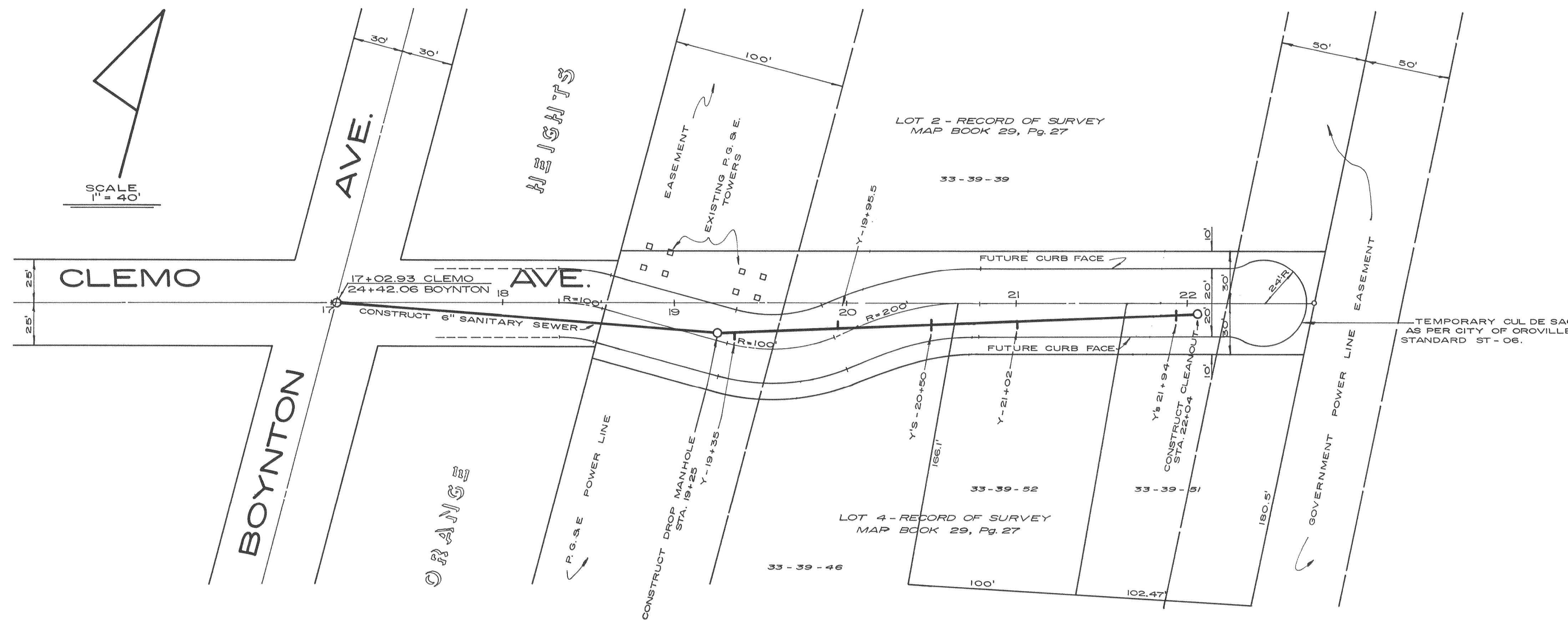


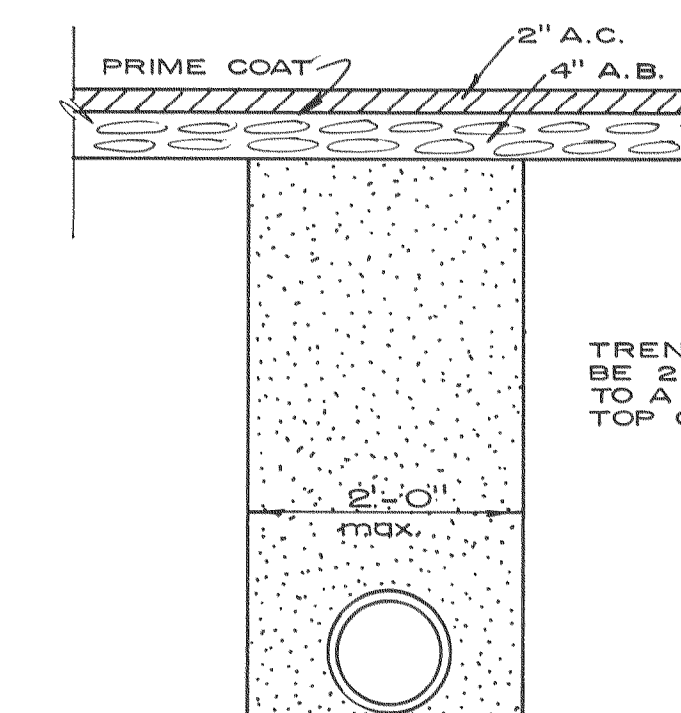
BENCH MARK
 R.R. SPIKE IN J.P. 150' * SOUTH of
 CLEMO & BOYNTON on W. SIDE of ST.
 ELEV. 272.33 U.S.G.S.



SCALE
 1" = 40' HORIZ.
 1" = 4' VERT.



NOTE:
 ALL WORK SHALL BE IN ACCORDANCE WITH THE CITY OF OROVILLE STANDARDS AND SPECIFICATIONS.
 MANHOLE ASSEMBLY - CONST. STDS. - PG. SS-05
 STANDARD MANHOLE - " " - PG. SS-02
 FLUSHING MANHOLE - " " - PG. SS-06
 DROP MANHOLE - " " - PG. SS-03
 SERVICE CONNECTION - " " - PG. SS-01



STREET REPLACEMENT

| REV | DATE | DESCRIPTION | APPD BY | N.W. |
|--|---|-------------|---------|------|
| 1 | 12/4/69 | AS BUILT | | |
| CITY of OROVILLE | | | | |
| PLAN AND PROFILE CLEMO AVENUE SANITARY SEWER EXTENSION 500 FT. EAST of BOYNTON AVE. | | | | |
| DRAWN BY | APPROVED BY | | DATE | |
| J.W. | <i>Michael Zambary</i> | | 9/16/69 | |
| DESIGN BY | CITY ENGINEER RE. 11440 | | SHEET | |
| CHECKED BY | ORIGINAL DESIGN PREPARED BY COOK & ASSO. OROVILLE, CALIFORNIA | | 1 OF 1 | |