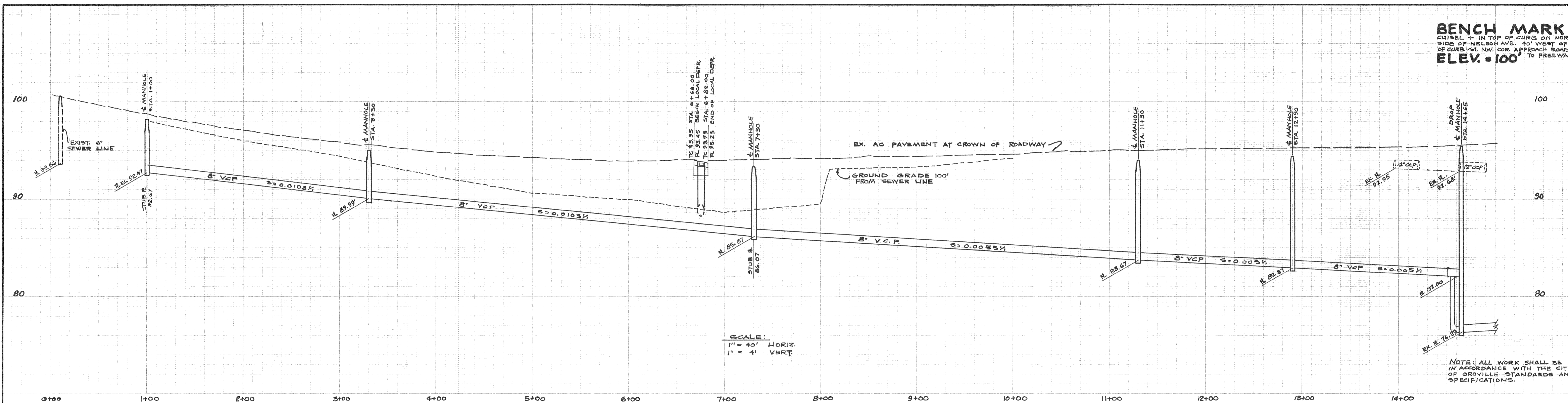
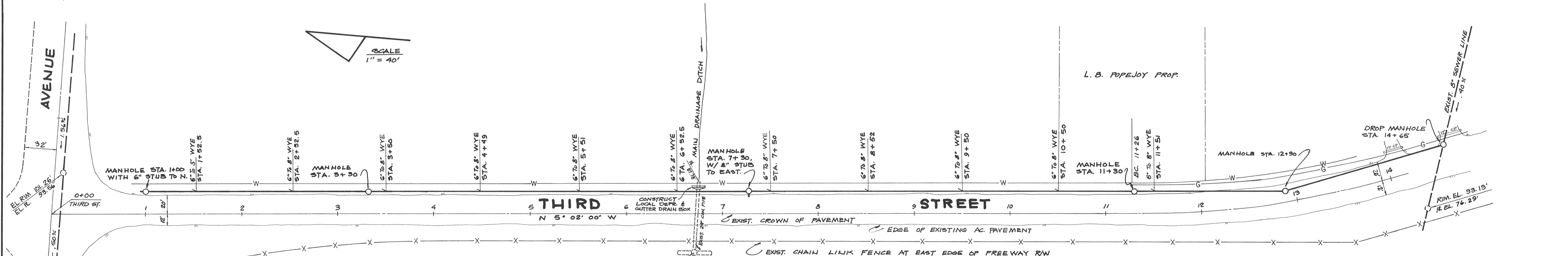


BENCH MARK
 CHISEL + IN TOP OF CURB ON NORTH
 SIDE OF NELSON AVE. 40' WEST OF BC
 OF CURB (at NW COR. APPROACH ROAD
 ELEV. = 100' TO FREEWAY.



SCALE:
 1" = 40' HORIZ.
 1" = 4' VERT.



FRONT FOOT CHARGE: \$9.78
 1,095 FEET OF FRONTAGE (EXCLUDING
 AREA SEWERED FROM GRAND AVE)
 \$10,708.00 CONTRACT PRICE
 9.788
 1,095 / 10,708.00 SAY \$9.78 PER FRONT FOOT

REV	DATE	DESCRIPTION	APPD BY
1	25 MAR 65	"AS BUILT" SANITARY SEWER # WYE LOCATION	BAR
CITY of OROVILLE			
PLAN AND PROFILE SANITARY SEWER IN THIRD STREET GRAND AVE. to NELSON AVE.			
DRAWN BY NAW		APPROVED <i>[Signature]</i> 3/18/64 CITY ENGINEER RE. 11440 DATE	
DESIGN BY J.M.		SHEET	
CHECKED BY <i>[Signature]</i>		1 OF 1	