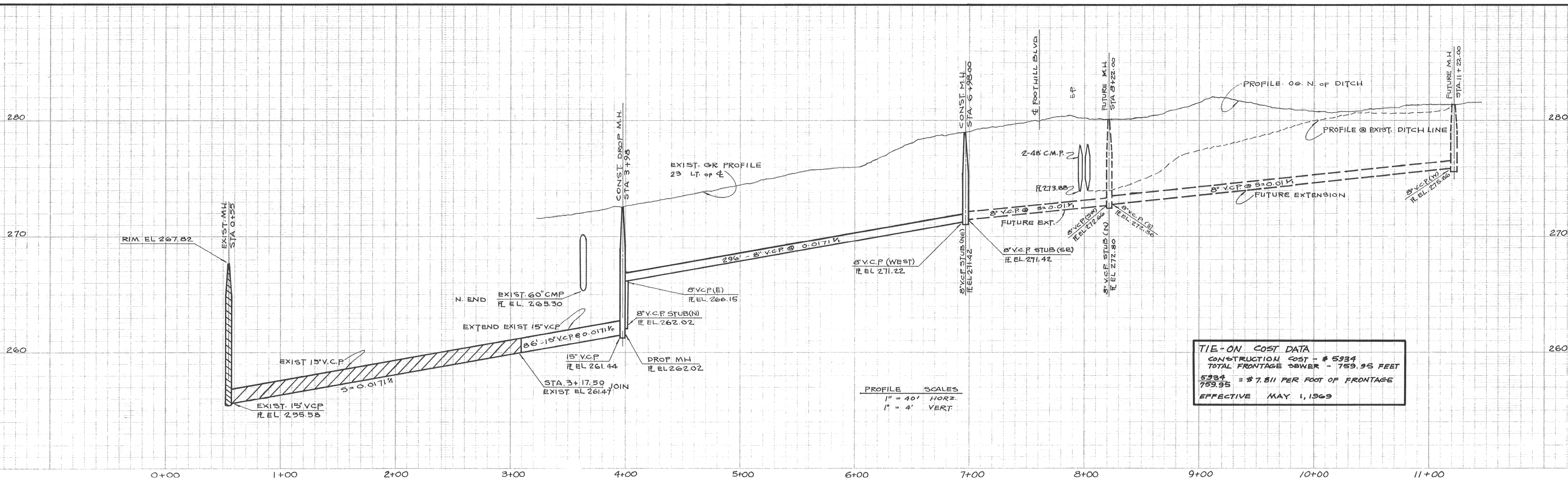
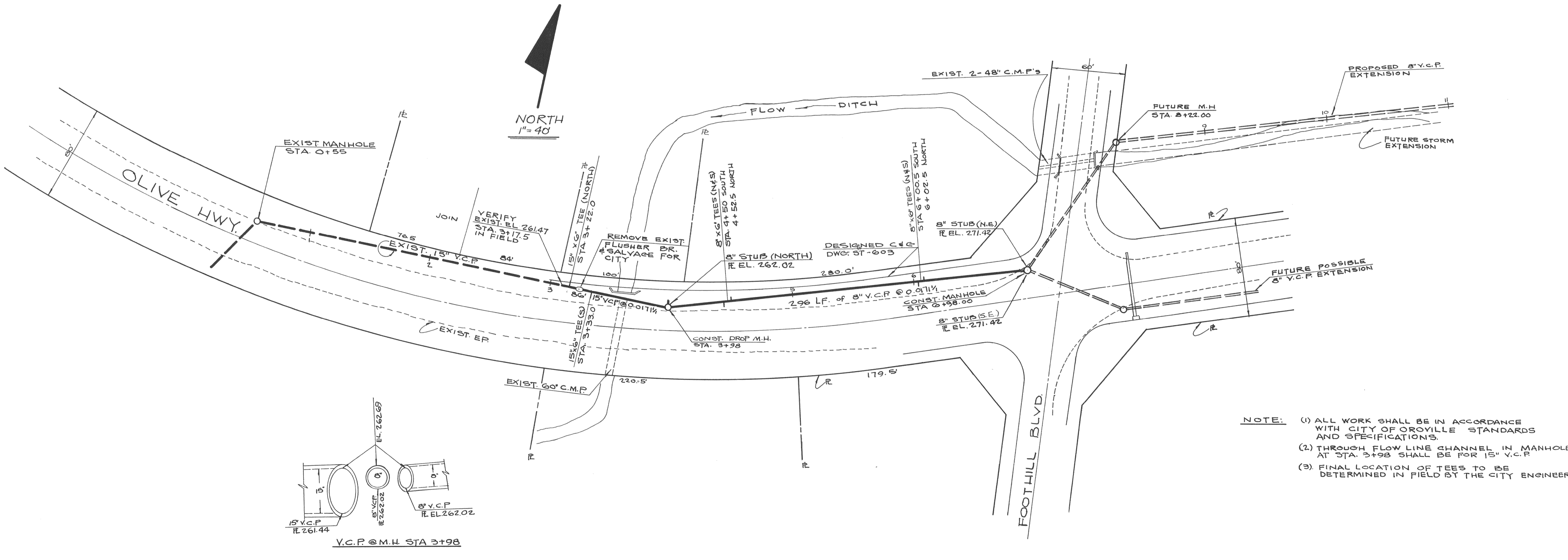


BENCH MARK
SPIKE IN POWER POLE
LOCATED 35.2 FEET RT. OF
OLIVE HWY STA. 55+73
ELEVATION: 283.31



TIE-ON COST DATA
CONSTRUCTION COST - \$ 5934
TOTAL FRONTAGE SEWER - 759.95 FEET
5934 = \$ 7.81 PER FOOT OF FRONTAGE
759.95
EFFECTIVE MAY 1, 1969

PROFILE SCALES
1" = 40' HORIZ.
1" = 4' VERT.



VCP CAPACITIES - MGD

(1) 15" VCP @ 5x0.0171%
 $Q = 1.486 AR^{2.5} S^{0.5} \times 643.315$
 $Q = 1.486 \times 15^{2.5} \times 0.0171^{0.5} \times 643.315$
 $Q = 114.308 \times 0.566 \times 1.304 \times 643.315$
 $Q = 5.47 \text{ MGD}$

(2) 8" VCP @ 5x0.0171%
 $Q = 1.486 AR^{2.5} S^{0.5} \times 643.315$
 $Q = 1.486 \times 8^{2.5} \times 0.0171^{0.5} \times 643.315$
 $Q = 1.00 \text{ MGD}$

NOTE:

- (1) ALL WORK SHALL BE IN ACCORDANCE WITH CITY OF OROVILLE STANDARDS AND SPECIFICATIONS.
- (2) THROUGH FLOW LINE CHANNEL IN MANHOLE AT STA. 3+93 SHALL BE FOR 15" V.C.P.
- (3) FINAL LOCATION OF TEES TO BE DETERMINED IN FIELD BY THE CITY ENGINEER

REV	DATE	DESCRIPTION	APP'D	DATE
1	4/3/69	"AS BUILT"		

CITY OF OROVILLE

**PLAN AND PROFILE
SANITARY SEWER
IN OLIVE HIGHWAY FROM
FOOTHILL BLVD-400' WEST.**

DRAWN N. A. W.	APPROVED <i>Michael Zamboni</i> 3/4/69
DESIGN M. V.	CITY ENGINEER R/E 11440 DATE
CHECKED 3	SHEET 1 OF 1

