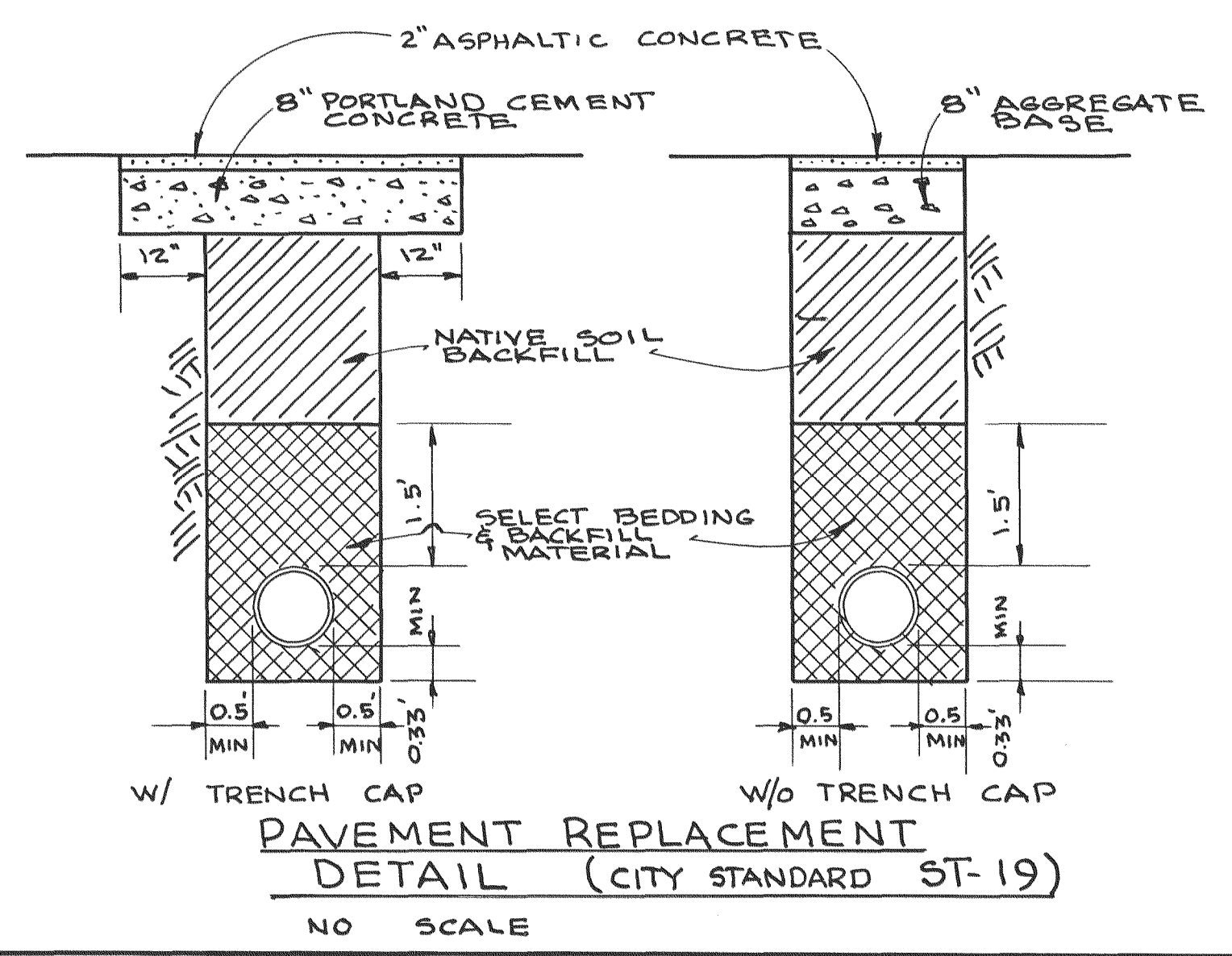
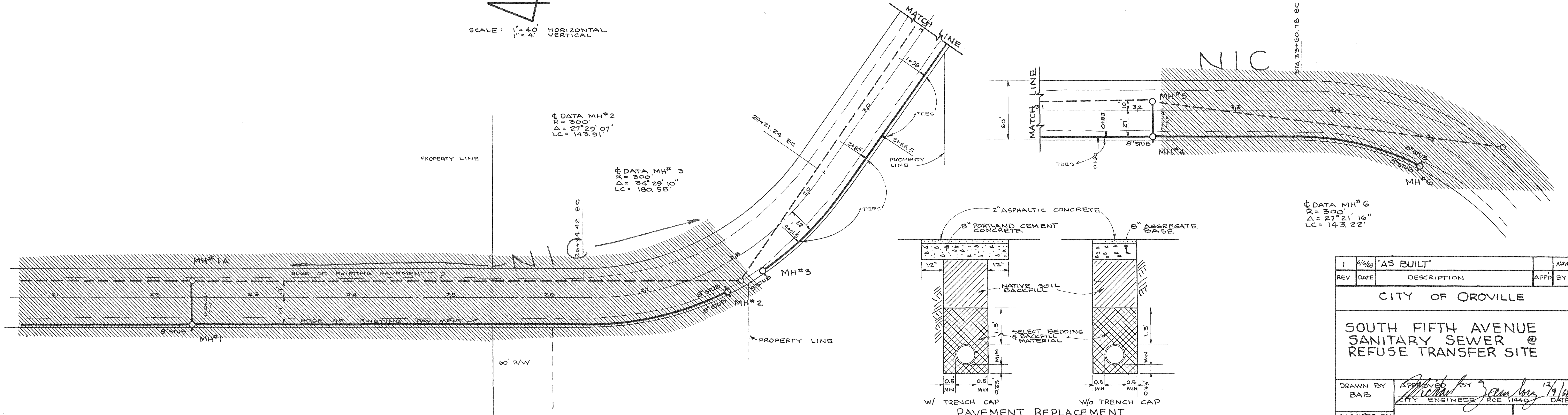


DATA MH#2
 R = 300'
 $\Delta = 27^\circ 29' 07''$
 LC = 143.91'

DATA MH#3
 R = 300'
 $\Delta = 34^\circ 29' 10''$
 LC = 180.58'

DATA MH#6
 R = 300'
 $\Delta = 27^\circ 21' 16''$
 LC = 143.22'



1	6/6/69	"AS BUILT"	NAW
REV	DATE	DESCRIPTION	APPD BY
CITY OF OROVILLE			
SOUTH FIFTH AVENUE SANITARY SEWER @ REFUSE TRANSFER SITE			
DRAWN BY BAB	APPROVED BY <i>Richard Jambury</i>	DATE 12/1/68	
CHECKED BY <i>M3</i>	CITY ENGINEER RCE 11440		1 OF 1