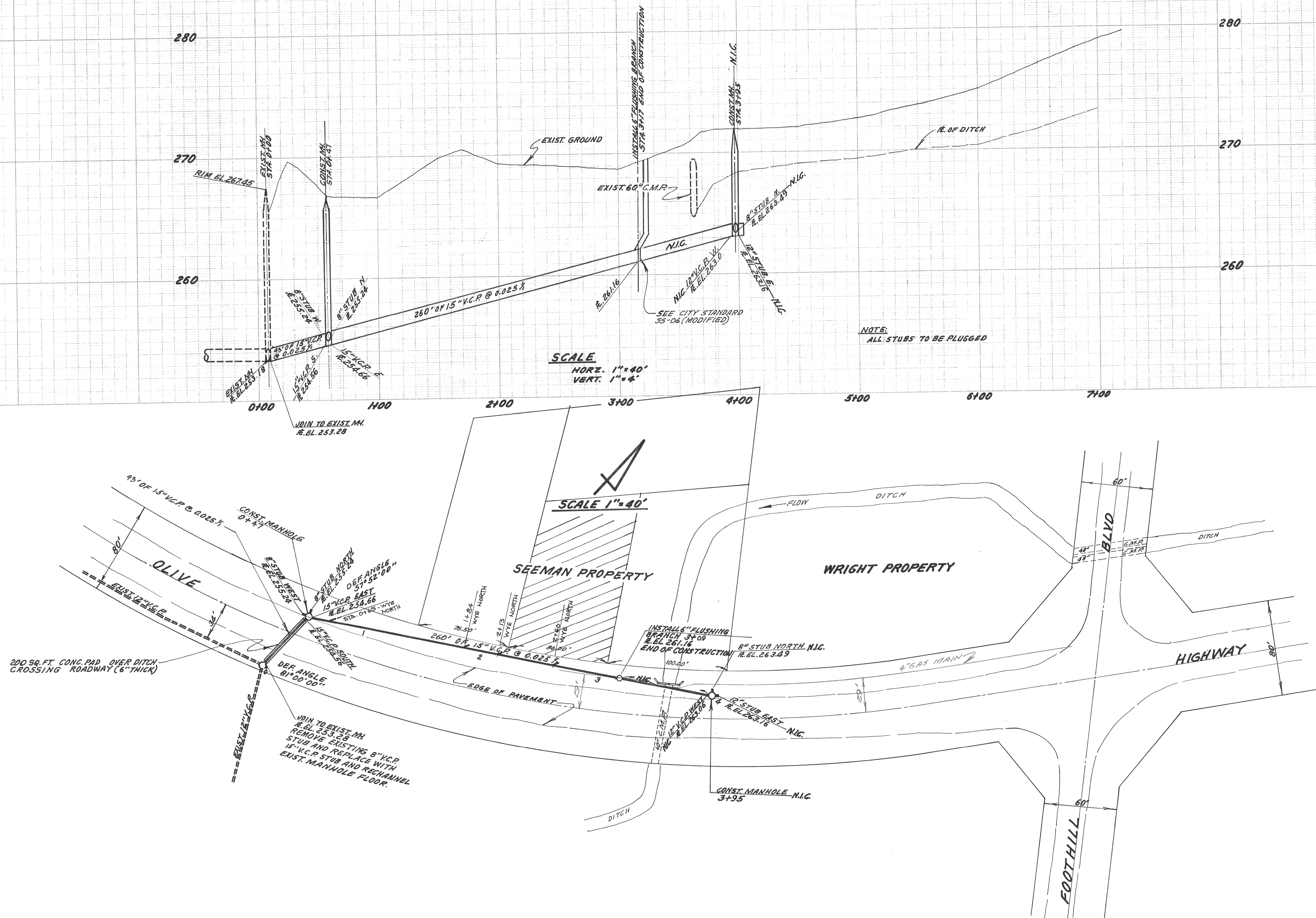


BENCH MARK:
R.R. SPIKE IN J.P. 30 FEET RIGHT
OF STATION 47+20. SEE DRAWING ST-603
ELEVATION 265.43



REV	DATE	DESCRIPTION	APPD BY
2	3/2/66	"AS BUILT"	M3 NW
1	3/2/66	INCREASED PIPE SIZE FROM 12" V.C.P. TO 15" V.C.P. ANTICIPATING RESTORATION SITE NEEDS OF KELLY RIDGE AREA	M3 GS

CITY OF DROVILLE

**OLIVE HIGHWAY
SANITARY SEWER
700 FEET WEST OF
FOOTHILL BOULEVARD**

DRAWN BY GS	APPROVED M3 CITY ENGINEER	DATE 3/2/66
CHECKED BY M3		SHEET 1 of 1