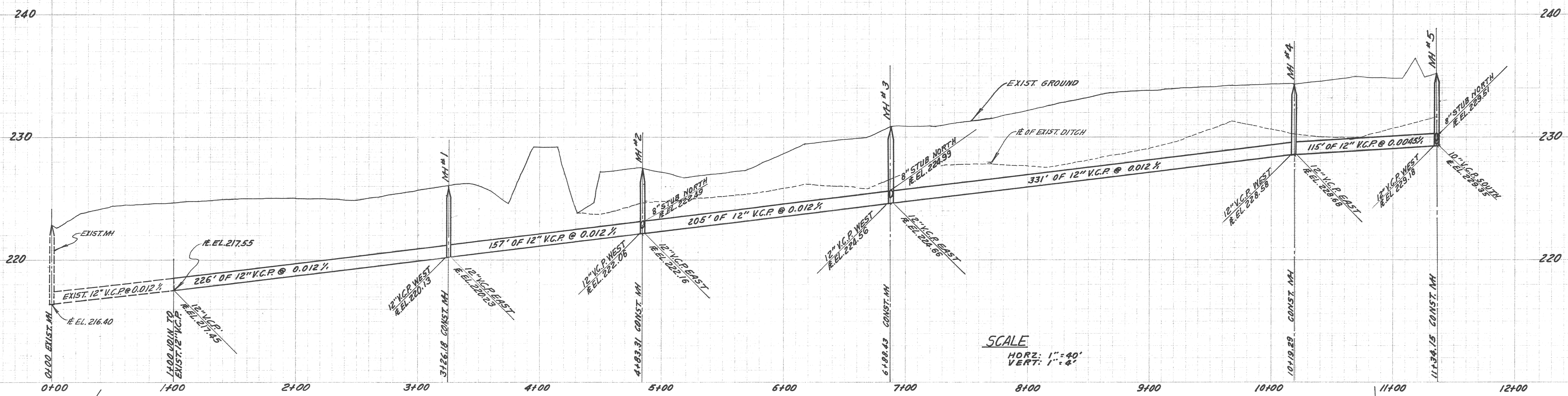
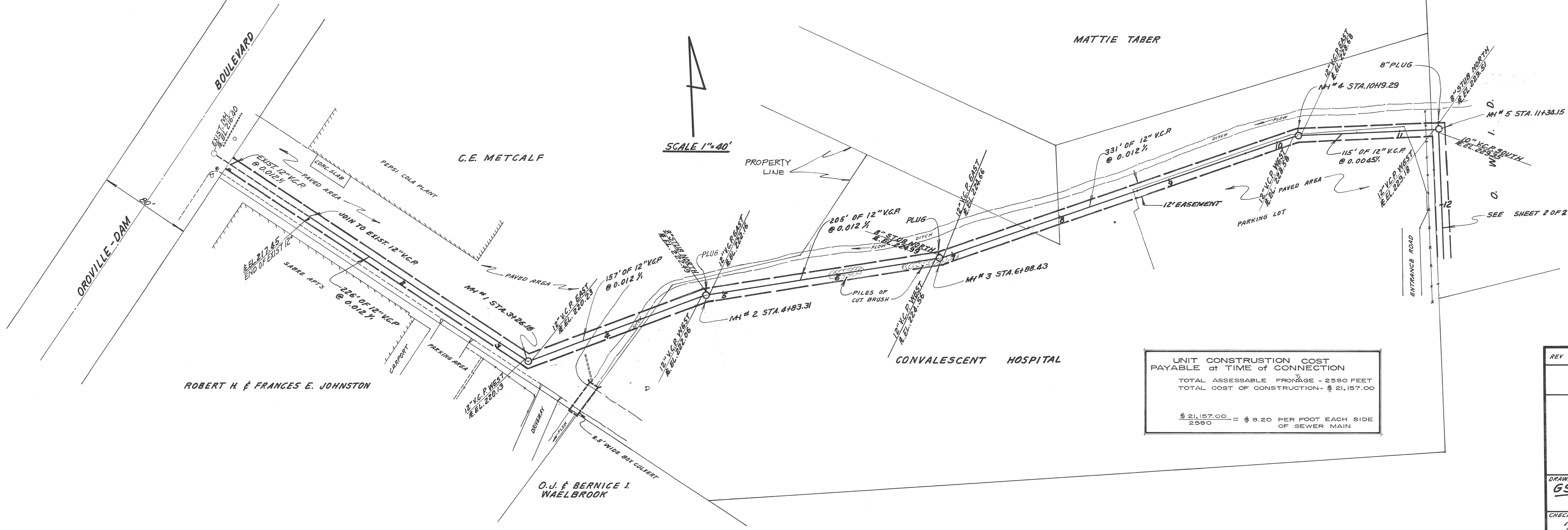


BENCH MARK:
 NAIL IN UP IN FRONT OF
 SABRE APARTMENT
 ELEVATION 220.77



NOTE:
 ALL WORK SHALL BE IN ACCORDANCE
 WITH THE CITY OF OROVILLE
 STANDARDS AND SPECIFICATIONS.



UNIT CONSTRUCTION COST
 PAYABLE AT TIME OF CONNECTION
 TOTAL ASSESSABLE FRONTAGE - 2580 FEET
 TOTAL COST OF CONSTRUCTION - \$ 21,157.00
 \$ 21,157.00 = \$ 8.20 PER FOOT EACH SIDE
 OF SEWER MAIN

REV	DATE	DESCRIPTION	APPD BY
CITY OF OROVILLE			
DRY CREEK / GILMORE LN. SANITARY SEWER OROVILLE-DAM BOULEVARD TO SEAMAN PROPERTY			
DRAWN BY 65	APPROVED <i>[Signature]</i>	DATE 9/30/15	
CHECKED BY <i>[Signature]</i>	CITY ENGINEER RE: 1140	DATE	SHEET 1 OF 2