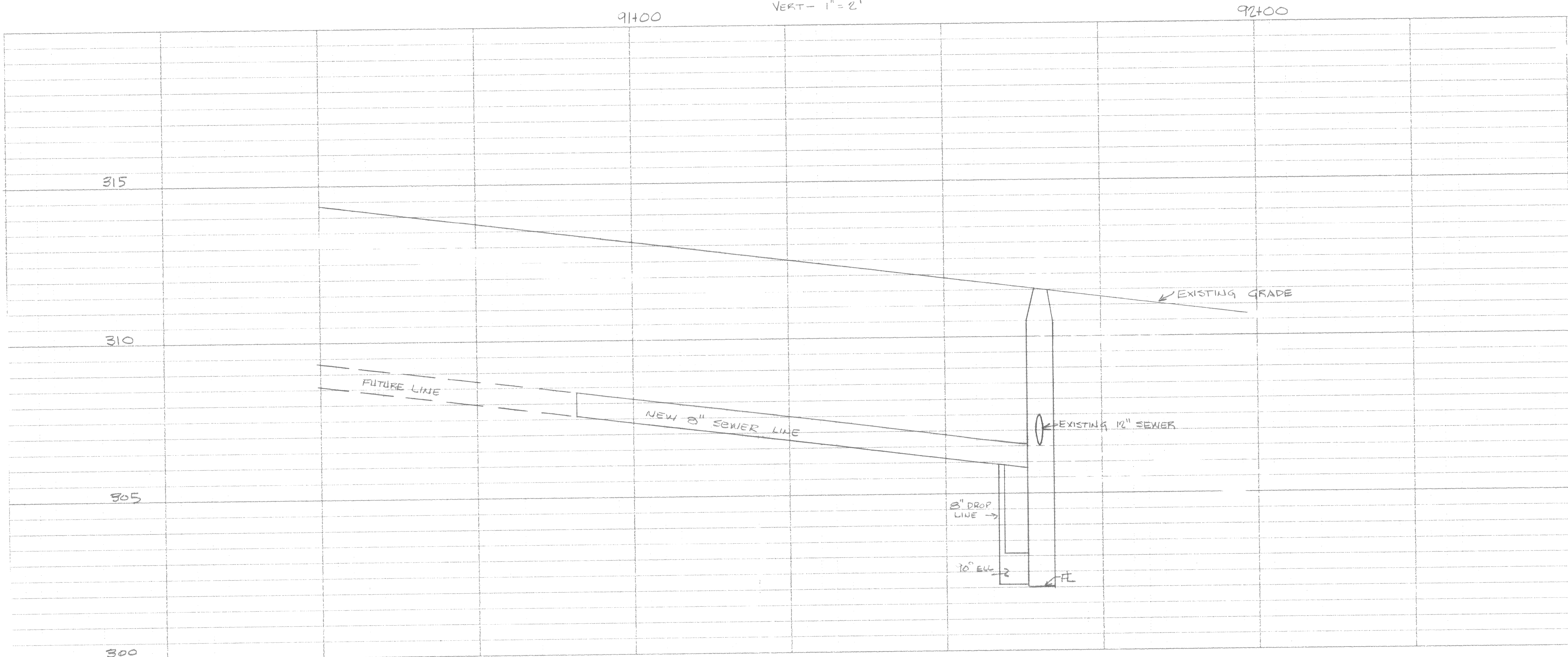


AS BUILT C.M.H.
7-84

SEE FOOTHILL BLVD. PROJ. # 21554-70-1
FILE # E-848 SHEET 7 of 15
BUTTE COUNTY

CITY OF ORVILLE
8-7-76

HORIZ - 1" = 10'
VERT - 1" = 2'



CLEARPRINT PAPER CO.
MADE IN U.S.A.

CLEARPRINT PAPER CO.
MADE IN U.S.A.

55-265