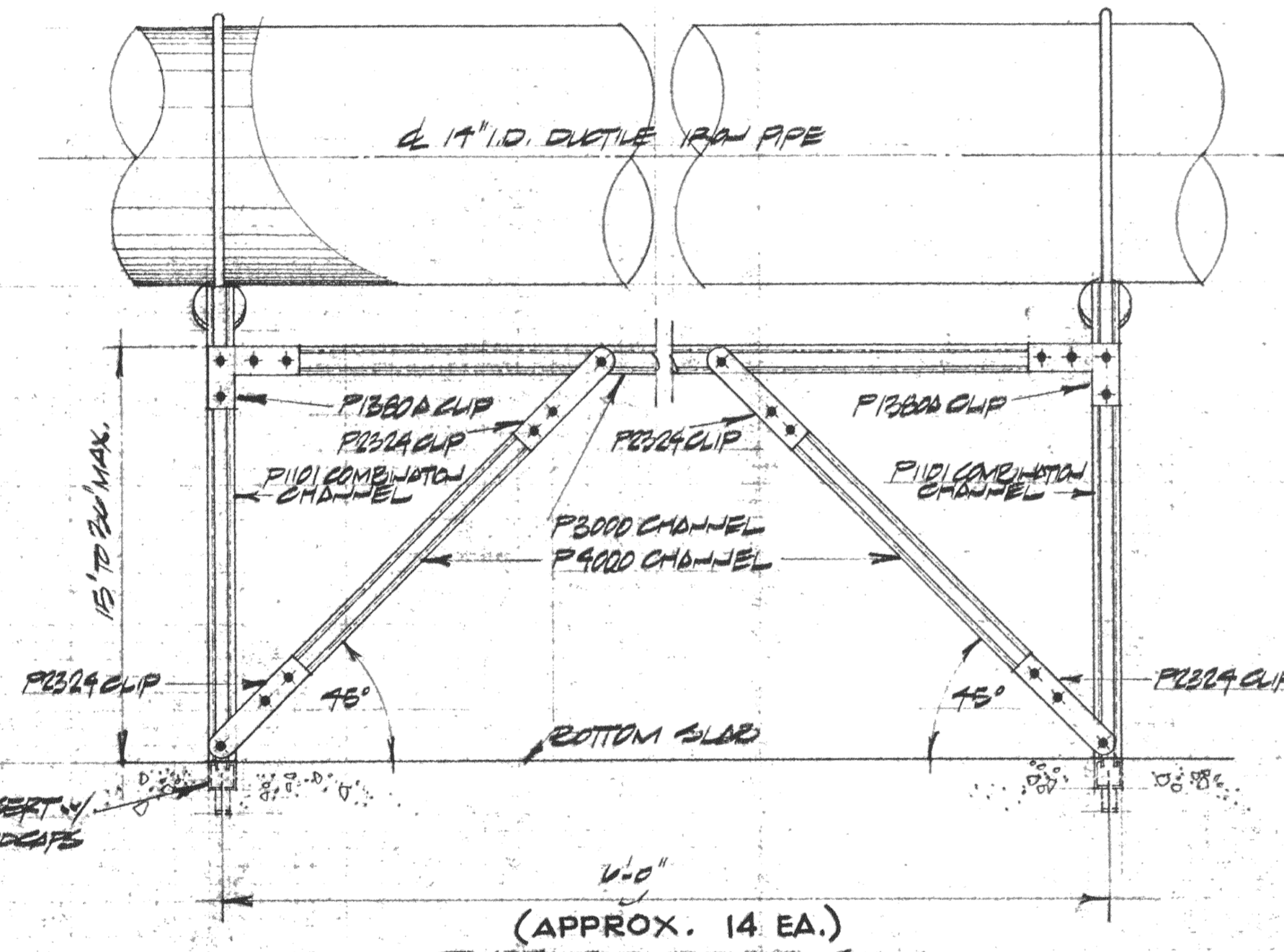
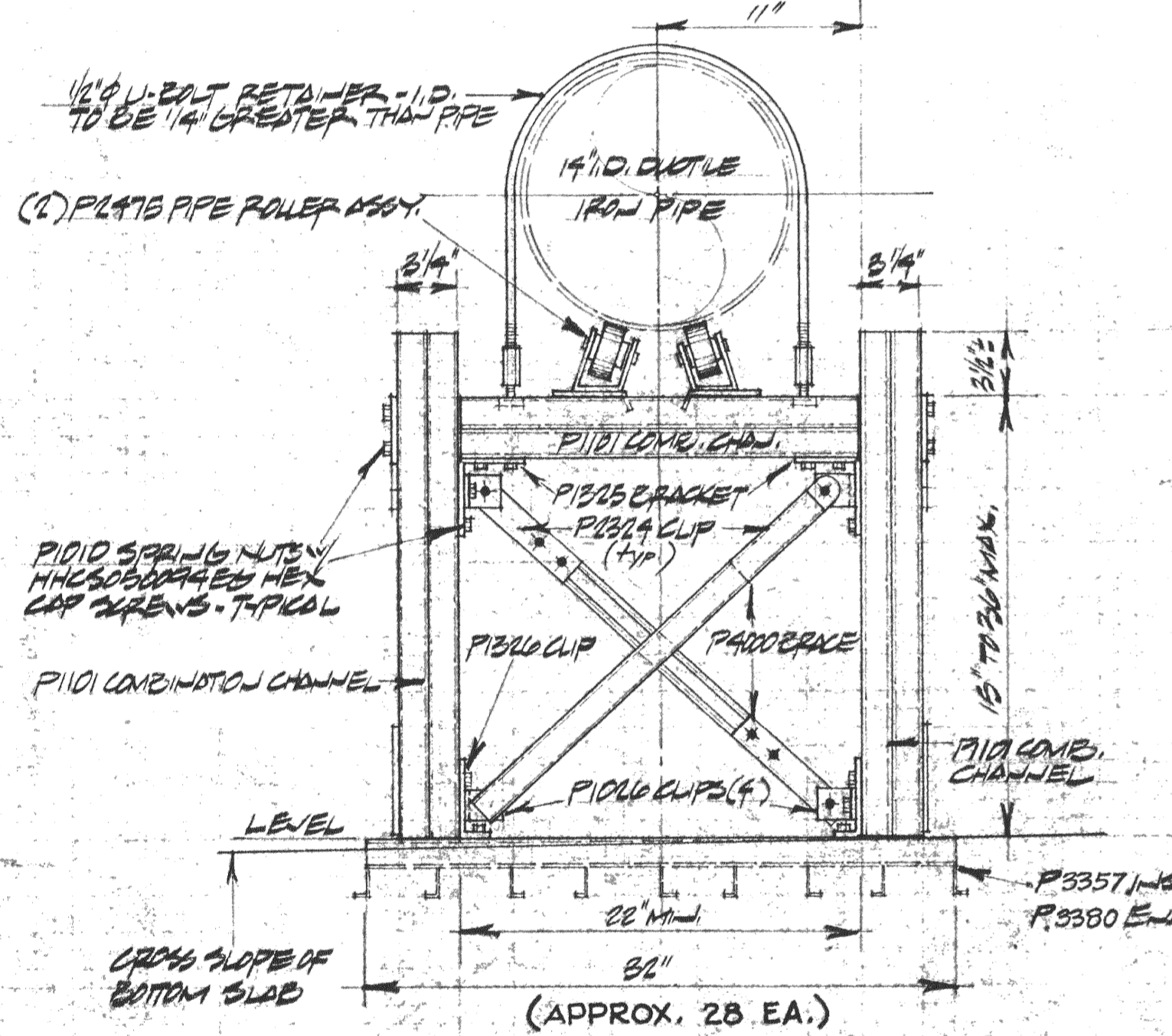


SPECIAL PIPE SUPPORT @ ABUTMENT #10

1/2" x 1/2"

NOTE: END PANEL BRACING ARRANGEMENT IS TYPICAL TO TYPE III SUPPORT.

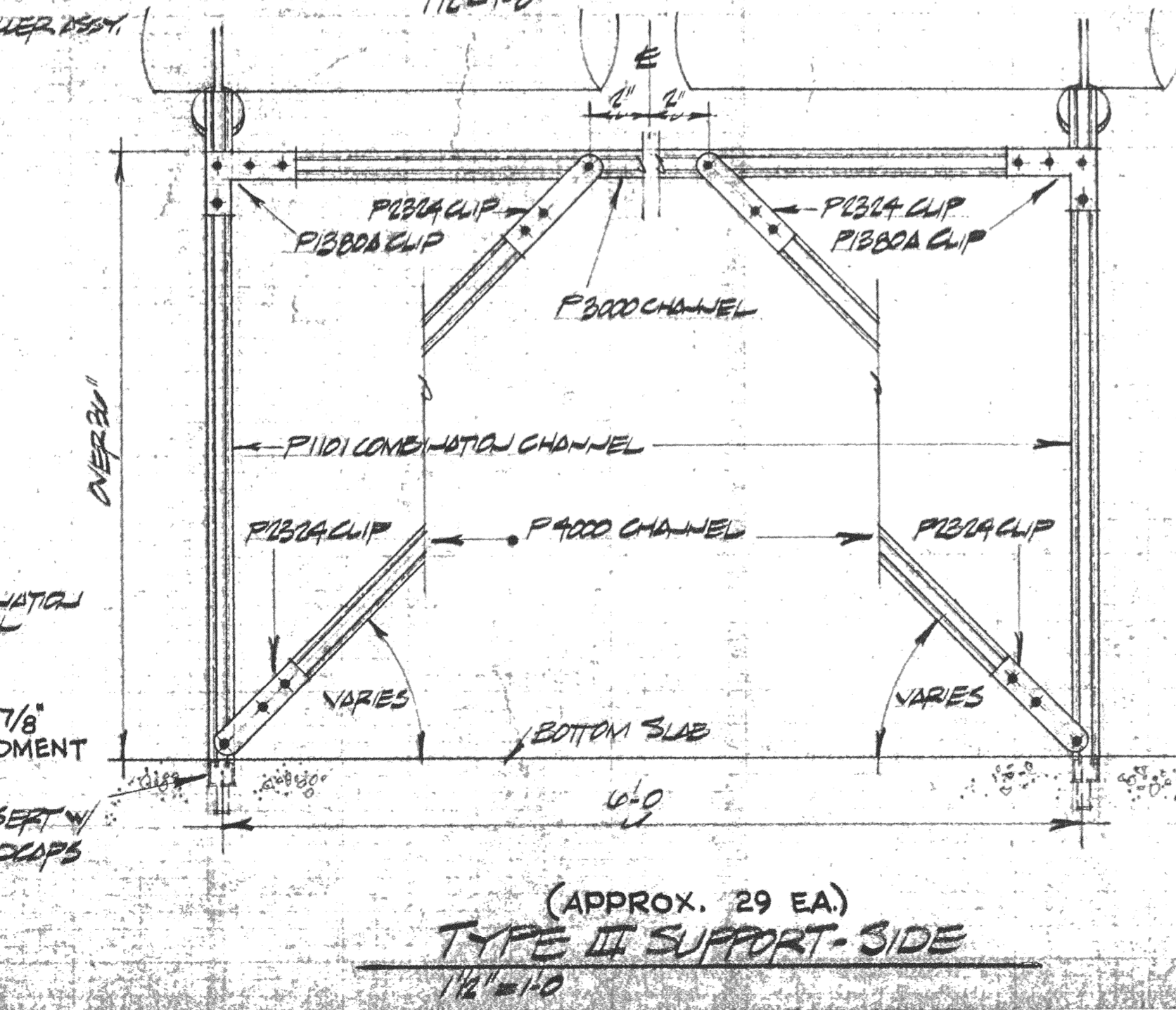
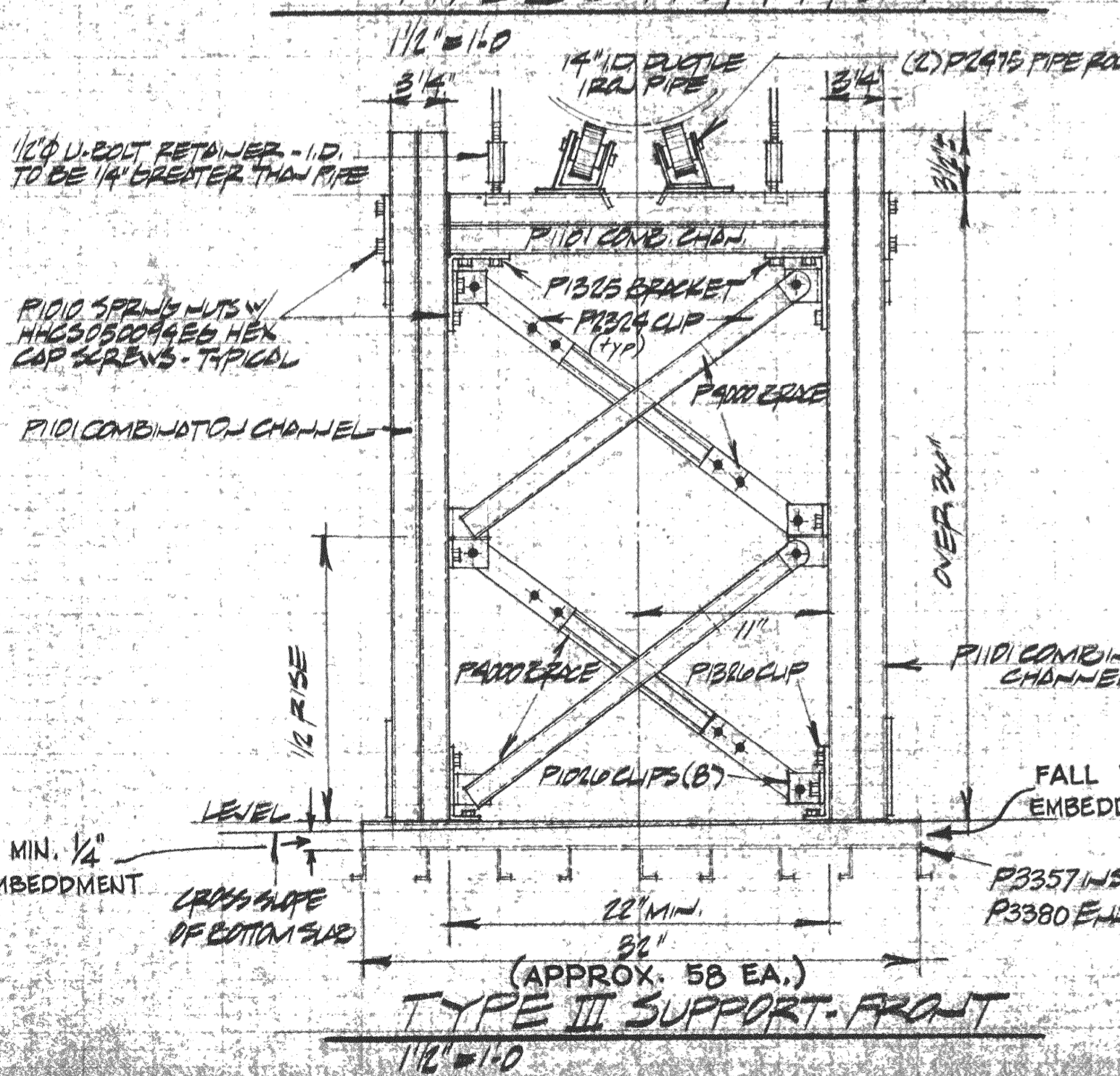


TYPE II SUPPORT - FRONT

TYPE II SUPPORT - SIDE

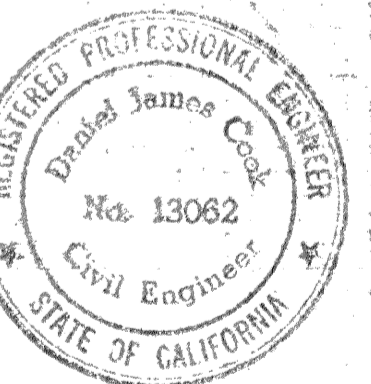
GENERAL NOTES:

1. NUMBER DESIGNATIONS OF MEMBERS AND CONNECTORS ARE AS MANUFACTURED BY UNITED CORRUGATION TO INDICATE SIZE, SHAPE, TYPE AND QUALITY OF MATERIALS TO BE USED IN PIPE SUPPORT CONSTRUCTION. OTHER MANUFACTURERS AND SUPPLIERS OF MATERIALS MEETING THESE SPECIFICATIONS MAY BE SUBMITTED TO THE ENGINEER FOR APPROVAL.
2. THE UNIT PRICE PAID PER PIPE SUPPORT SHALL INCLUDE TWO SETS OF PIPE ROLLERS, WITH SUPPORTS AND BRACING BETWEEN SETS OF ROLLERS. THE LENGTH OF PIPE SUPPORT UNITS WILL BE 10'0" MAXIMUM, EXCEPT FOR SPECIAL SUPPORT AT ABUTMENT NUMBER 10.
3. ALL INSERTS UNDER ROLLER AND POST UNITS SHALL BE LEVEL IN BOTH DIRECTIONS TO PROVIDE UNIFORM SUPPORT FOR VERTICAL MEMBERS. INSERTS SHALL BE SET LEVEL TO COMPENSATE FOR CROSS SLOPE ON DECK AND THICKENED SLAB CONDITIONS AT PIERS. INSERTS SHALL BE SET AT RIGHT ANGLES TO CENTERLINE OF PIPE.
4. ROLLER SUPPORT MEMBERS SHALL SET LEVEL TO PREVENT BINDING OR ECCENTRIC LOADING OF ROLLERS.
5. CONNECTION OF P.1101 AND P.3000 MEMBERS AND BRACKETS SHALL BE WITH 1/2" NUTS WITH P.1010 SPRINGS, AND 1/2" HEX HEAD CAP SCREWS, WITH 1 1/2" MINIMUM LENGTH. LENGTH OF CAP SCREWS MAY VARY DUE TO NUMBER OF UNITS OR BRACKETS CONNECTED. CONNECTION OF P.4000 MEMBERS AND BRACKETS SHALL BE WITH P.4010 1/2" NUTS AND 1/2" x 1 1/2" HEX HEAD CAP SCREWS.
6. U-BOLT RETAINERS SHALL BE INSTALLED WITH 1/8" CLEAR AROUND PIPE TO ALLOW FOR EXPANSION AND CONTRACTION OF PIPE.
7. CONNECTIONS OF P.3300 MEMBERS AND BRACKETS SHALL BE WITH 1/2" NUTS WITH P.4010 SPRINGS, AND 1/2" HEX HEAD CAP SCREWS WITH 1 1/2" MINIMUM LENGTH. LENGTH OF CAP SCREWS MAY VARY DUE TO NUMBER OF UNITS OR BRACKETS CONNECTED.



TYPE III SUPPORT - FRONT

TYPE III SUPPORT - SIDE



REVISION	DATE
D.K.	6-80
E. IRWIN	1/80
DRAWN	DATE
APPROVED DATE	
FILE NO.	
SHEET NO.	
4	
OF 6 SHTS	
JOB NO. 778400	