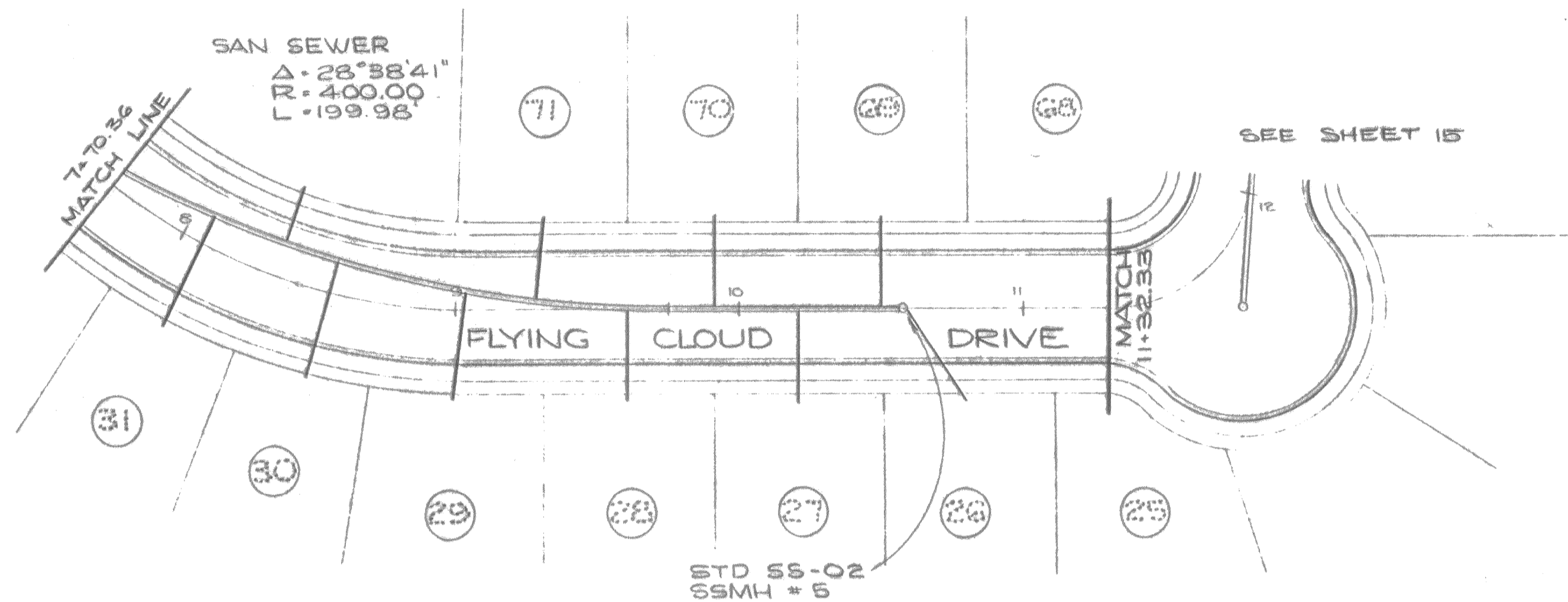


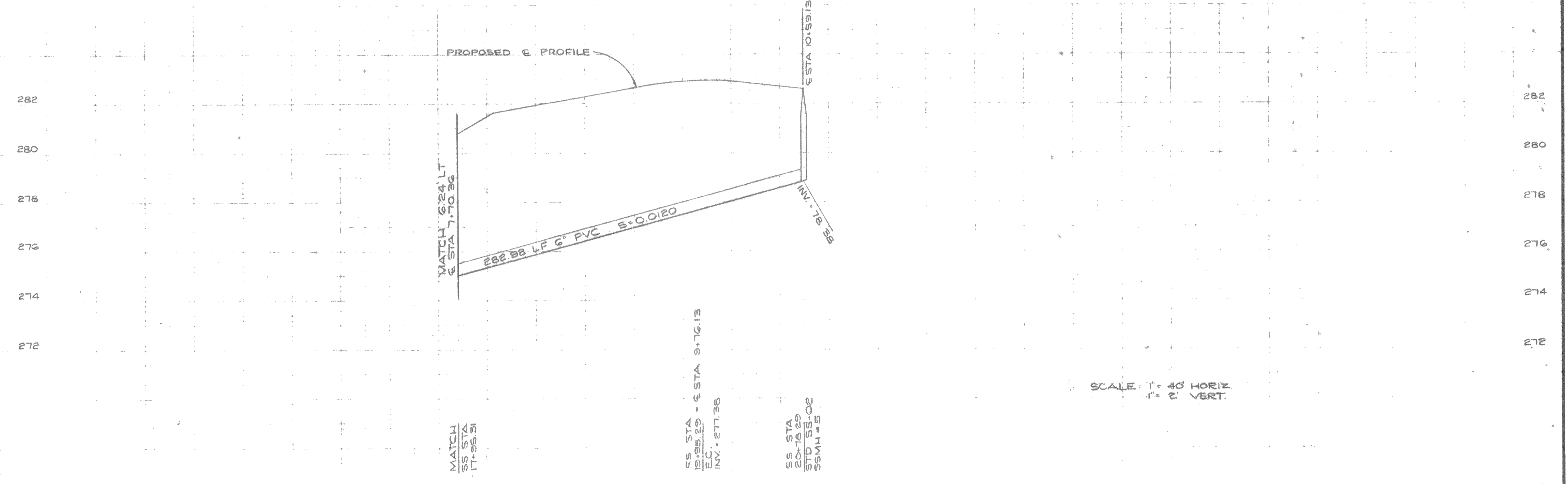


SCALE: 1" = 40'



SEE SHEET 15

NOTES
 1. ALL CONSTRUCTION SHALL CONFORM TO CITY OF OROVILLE STANDARDS AND SPECIFICATIONS.



SCALE: 1" = 40' HORIZ.
 1" = 2' VERT.

| | | | |
|----------|--------|----------|-----------------------|
| Designed | BD | Approved | <i>J. E. Anderson</i> |
| Drawn | BD, WH | Date | AUGUST, 1977 |
| Checked | EA | | |

SANITARY SEWER

ROLLS, ANDERSON & ROLLS
 CIVIL ENGINEERS
 365 FIR STREET • CHICO, CALIFORNIA 95926 • TELEPHONE 116 342 8319

CLIPPER SHIP ESTATES
 IMPROVEMENT PLANS

| | |
|-------------|----------|
| Drawing No. | 17 OF 20 |
| Job No. | 76137 |

55-275-5-6