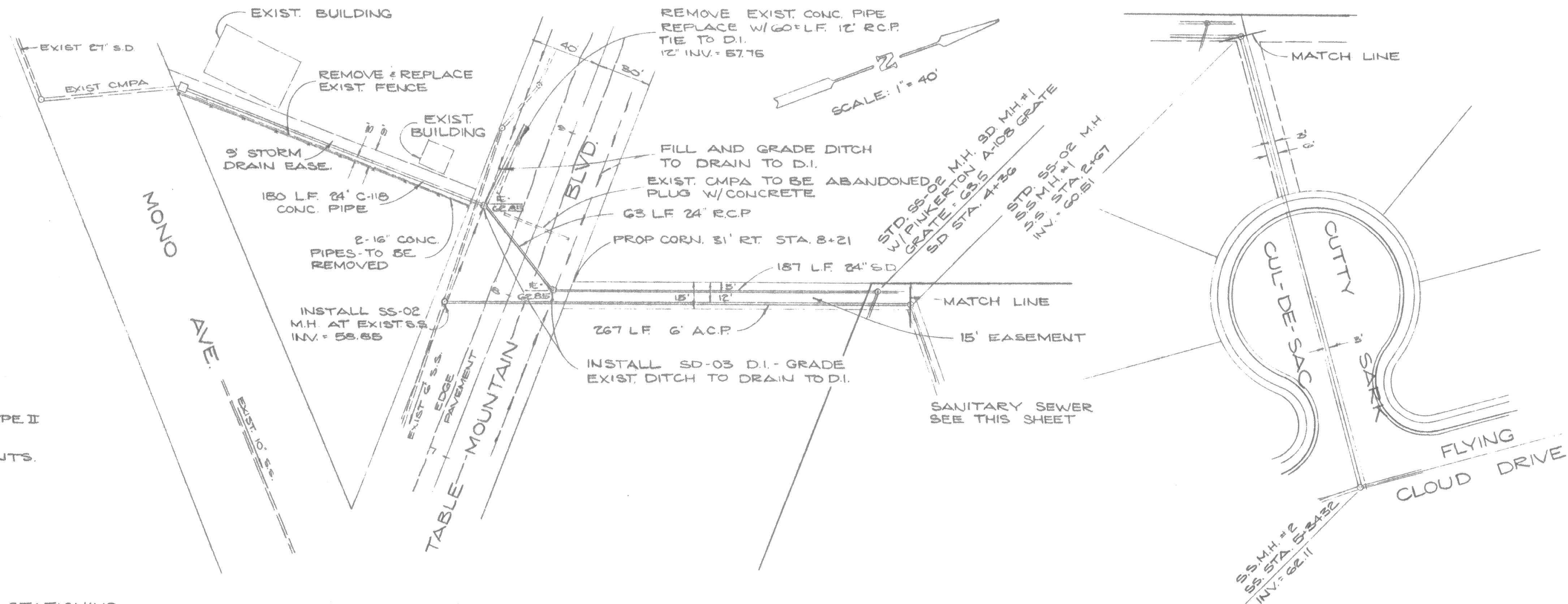
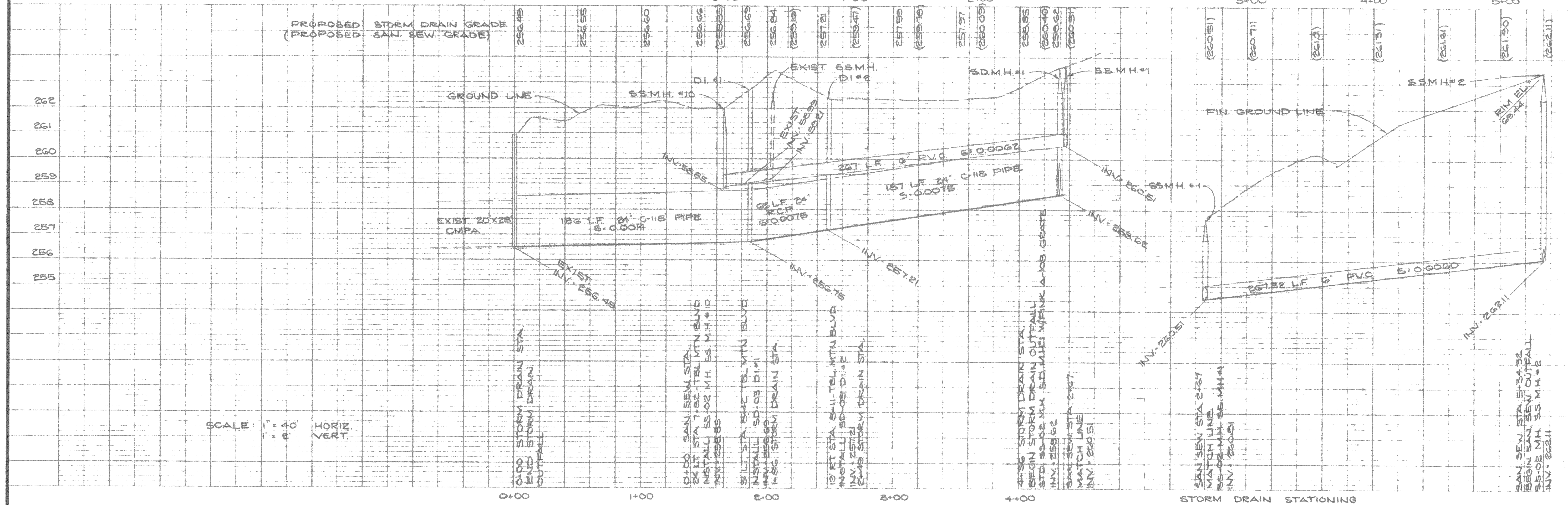


NOTES

1. ALL CONSTRUCTION SHALL CONFORM TO CITY OF OROVILLE STANDARDS AND SPECIFICATIONS.
2. CONTRACTOR TO VERIFY EXIST. INVERTS.
3. CONTRACTOR MAY SUBSTITUTE CL. 1500 TYPE II A.C.P. STORM DRAIN PIPE IN LIEU OF C-118 CONC. PIPE.
4. CONCRETE PIPE TO HAVE MORTAR JOINTS.



SANITARY SEWER STATIONING



SCALE: 1" = 40' HORIZ.
1" = 2' VERT.

Designed	BD	Approved	<i>[Signature]</i>
Drawn	BD	Date	AUGUST, 1977
Checked	EA		

**SEWER & STORM DRAIN
OUTFALL LINES**

ROLLS, ANDERSON & ROLLS
CIVIL ENGINEERS
965 FIR STREET • CHICO, CALIFORNIA 95926 • TELEPHONE 916-342-8319

**CLIPPER SHIP ESTATES
IMPROVEMENT PLANS**

Drawing No.	13 OF 20
Job No.	76137

35-278-1-0