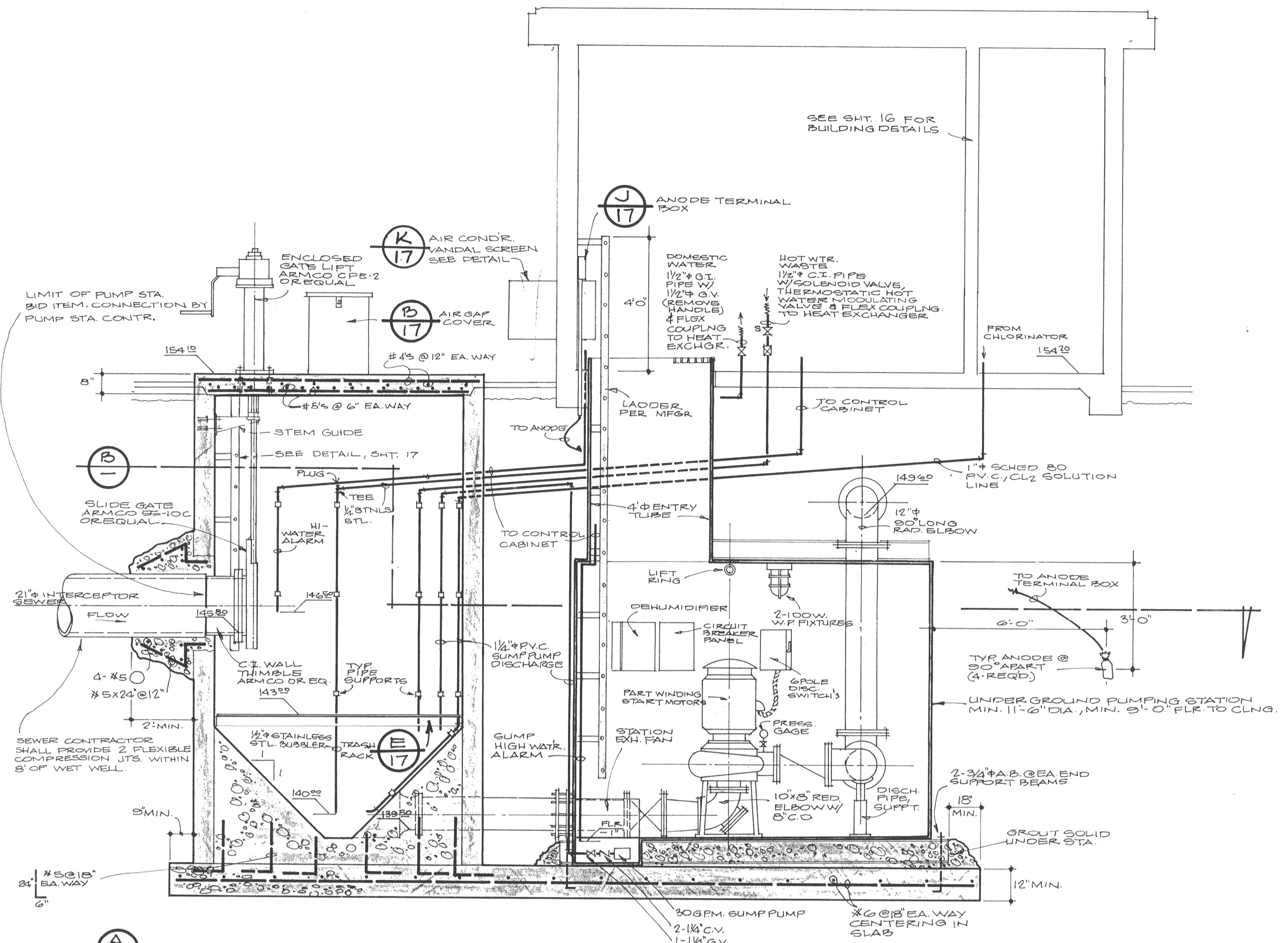
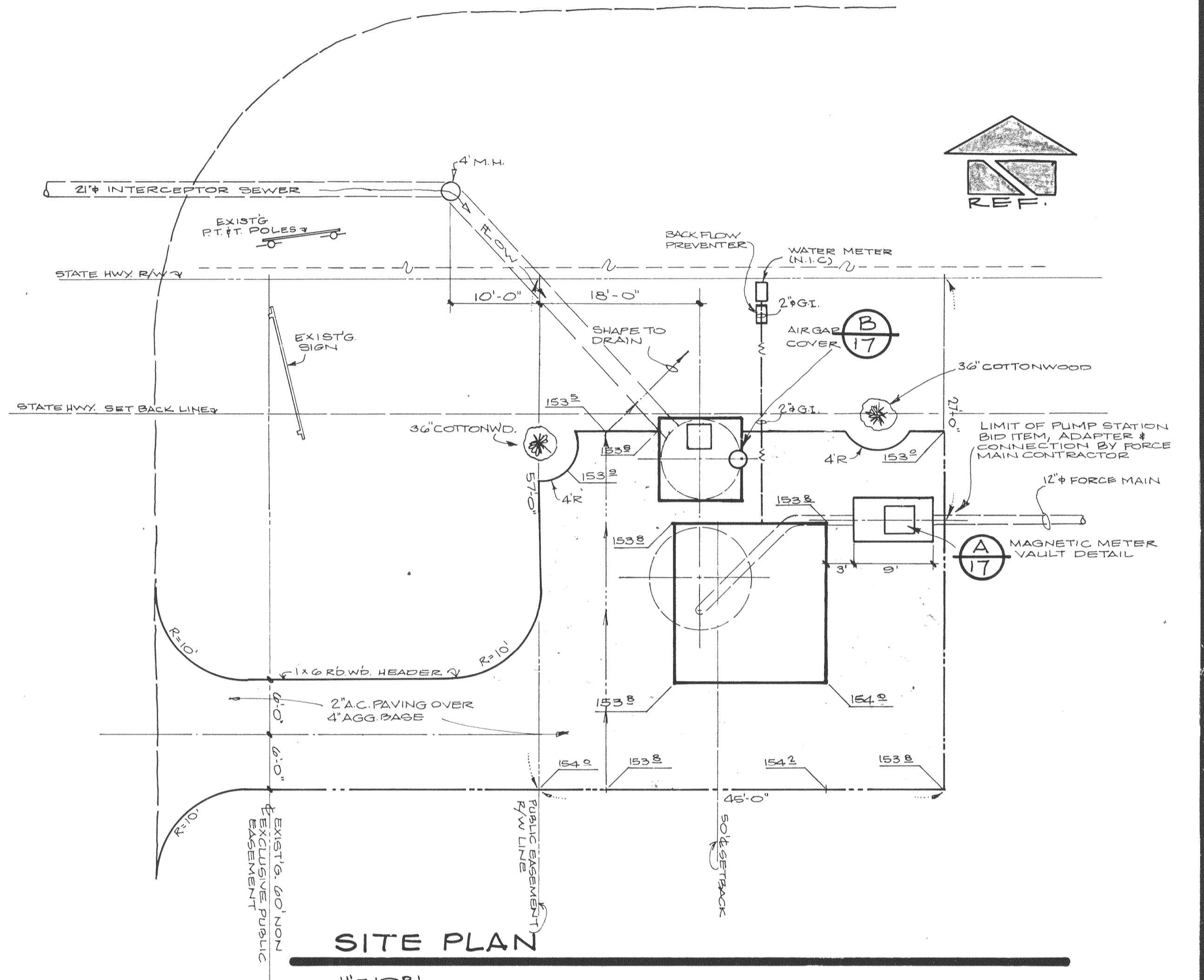


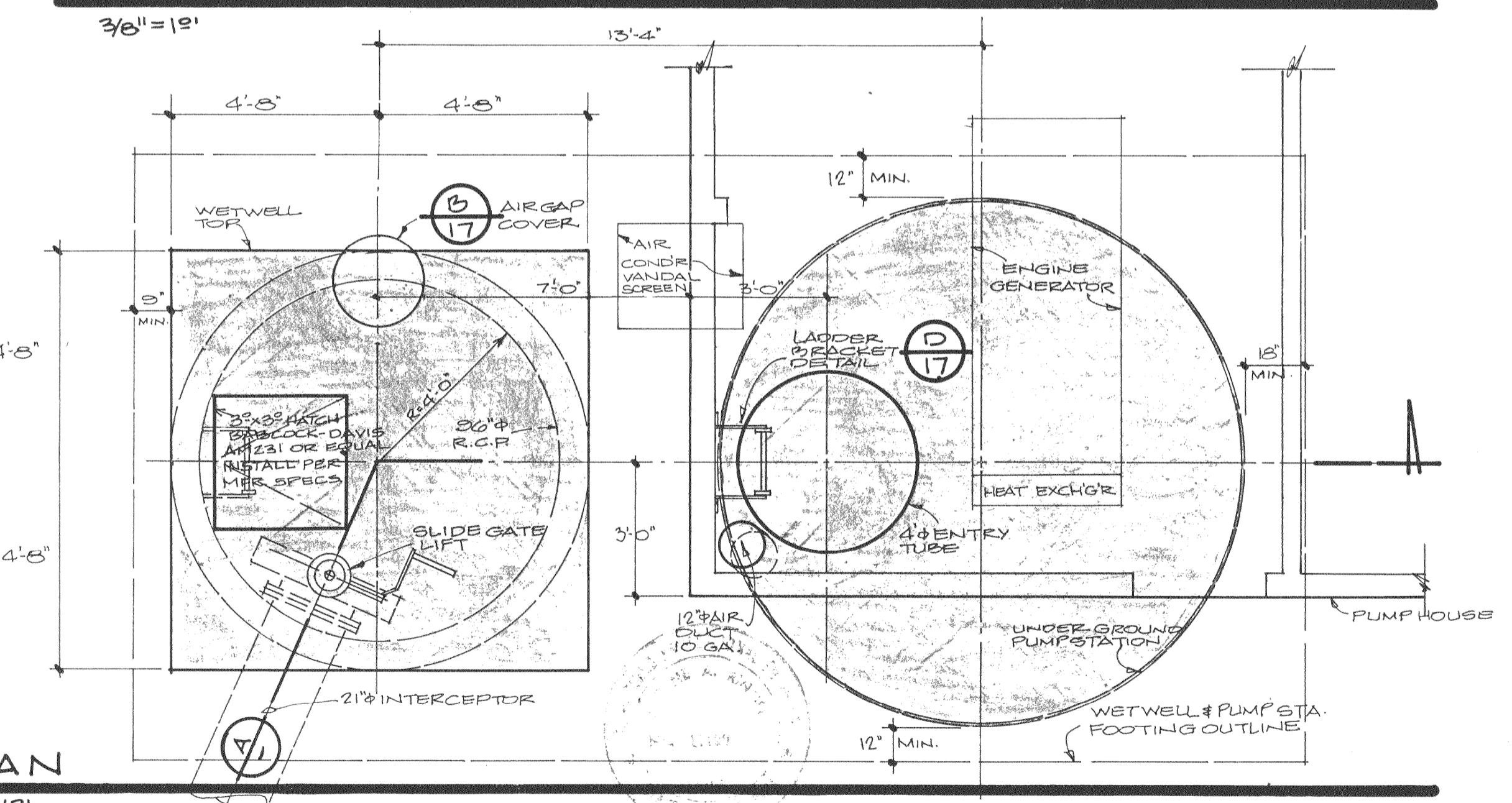
ORO DAM BLVD. WEST



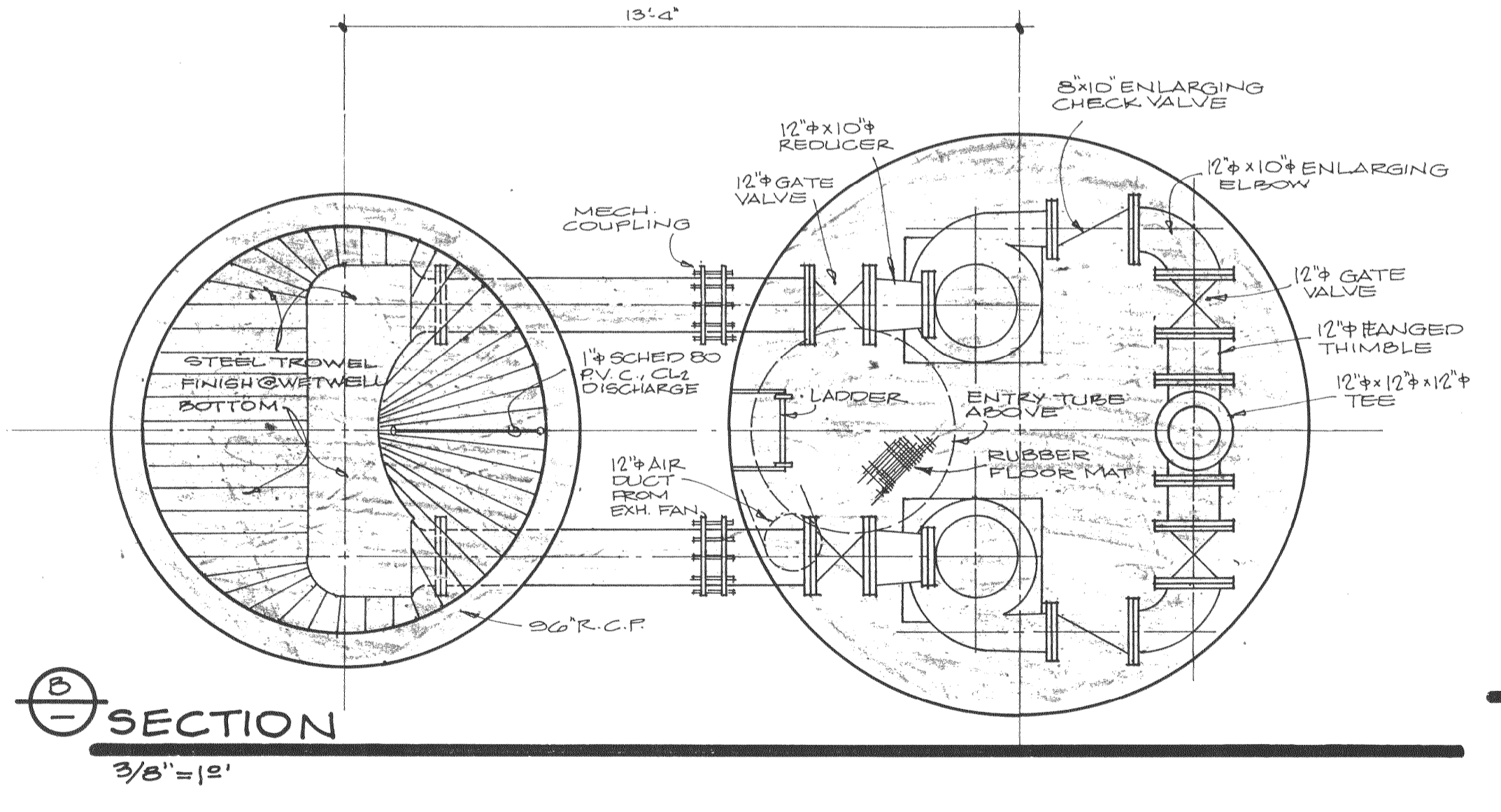
SECTION A  
3/8" = 1'-0"



SITE PLAN  
1" = 10'-0"



PLAN  
3/8" = 1'-0"



SECTION B  
3/8" = 1'-0"

- NOTE:
1. EL. 140.50 = LOW WATER CUT-OFF & ALARM. PROVIDE MANUAL OPERATION OF PUMPS BY PUSH BUTTON CONTROL. MANUAL OPERATION TO BY-PASS LOW WATER CUT-OUT BUT NOT LOW WATER ALARM.
  2. EL. 142.00-143.00 1 FOOT CONTROL RANGE FOR SINGLE PUMP OPERATING AT APPROX. 700 G.P.M. STORAGE ± 350 GAL. MIN. CYCLING TIME = 2 MIN. AT INFLUENT FLOW OF 350 G.P.M.
  3. EL. 143.00-145.50 30' CONTROL RANGE FOR 2 VARIABLE SPEED PUMPS AT 700 TO 2200 G.P.M. EACH.
  4. IF VARIABLE FREQ. MOTOR CONTROLS MALFUNCTION, PUMPS WILL OPERATE IN FULL SPEED MODE ONLY (2200 G.P.M.) AND OPERATE AS FOLLOWS: ON EL. 140.30 OFF EL. 142.00 STORAGE ± 2300 GAL. MIN. CYCLING TIME ± 4 MIN. AT INFLUENT FLOW OF 1100 G.P.M.
  5. ALL EXCAVATION FOR WET WELL AND PUMP STATION SHALL BE REPLACED AS STRUCTURAL BACKFILL.
  6. WET WELL TO BE CONSTRUCTED FROM PREFABRICATED PIPE SECTIONS - SEE SPECS.
  7. CUT HOLES IN TRASH RACK FOR PIPES SHOWN; PROVIDE 1" CLEARANCE ALL AROUND.
  8. 2-36" COTTONWOODS SHALL BE SAFETY PRUNED, ANY CAVITIES FILLED AND CUTS PROTECTED. A LICENSED TREE SERVICE WILL BE REQUIRED.
  9. ENCASE 1/4" SS BUBBLER PIPE IN 1/2" PVC TO PROTECT FROM DAMAGE WHEN BACKFILLING.

RINGEL & ASSOCIATES, INC

DES. EAR					
DR. DPH					
CHK. GP					
APPD. <i>Earl</i>	NO.	DATE	REVISION	BY	APPD.

LAYOUT, MECHANICAL PLAN, & SECTIONS

SEWERAGE COMMISSION,  
OROVILLE REGION  
OROVILLE, CALIFORNIA

FEATHER RIVER PUMP STATION  
SC - OR WEST INTERCEPTOR

SHEET	15 OF 20
DATE AUG. 1, 1974	
PROJ. NO. 2316	