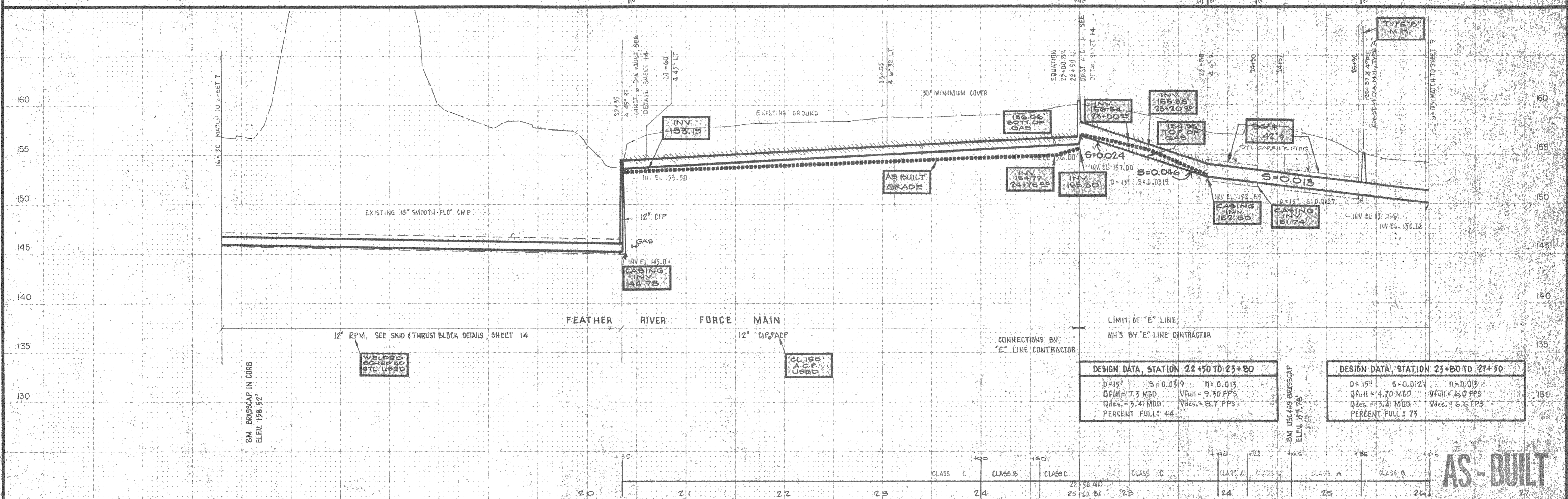


AS BUILT DATA

AS BUILT DATA



AS-BUILT

RINGEL & ASSOCIATES, INC

DES. EAR					
DR. WKJ, GB					
CHK. GB, WKJ					
APPD. <i>[Signature]</i>	NO.	DATE	REVISION	BY	APPD.

FEATHER RIVER FORCE MAIN; "E" LINE

SEWERAGE COMMISSION,
OROVILLE REGION
OROVILLE, CALIFORNIA

PLAN AND PROFILE
SC-OR WEST INTERCEPTOR

SHEET
8 OF 20
DATE AUG 1, 1974
PROJ. NO. 2316