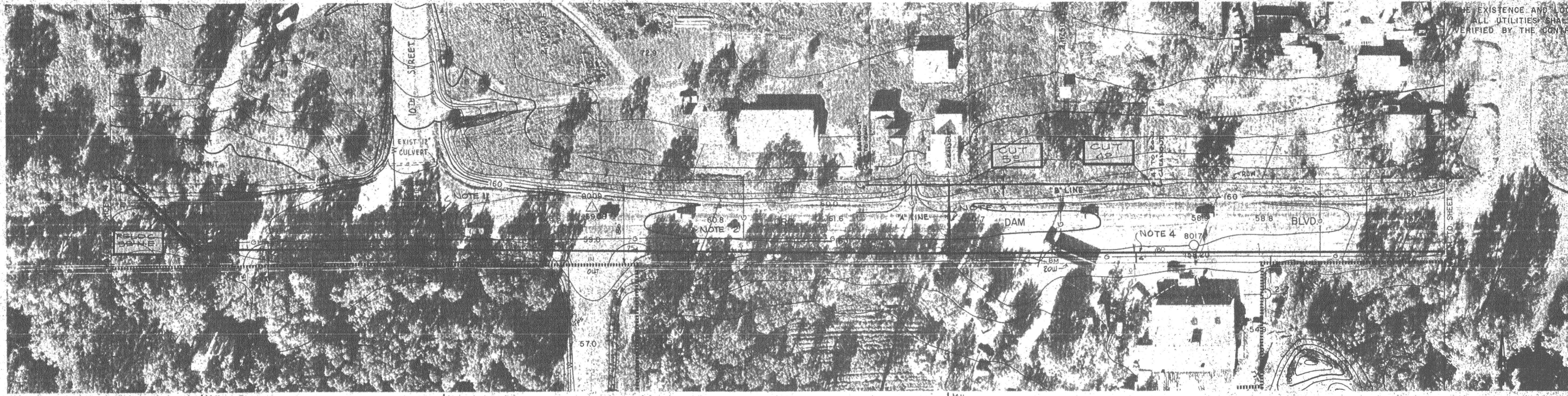


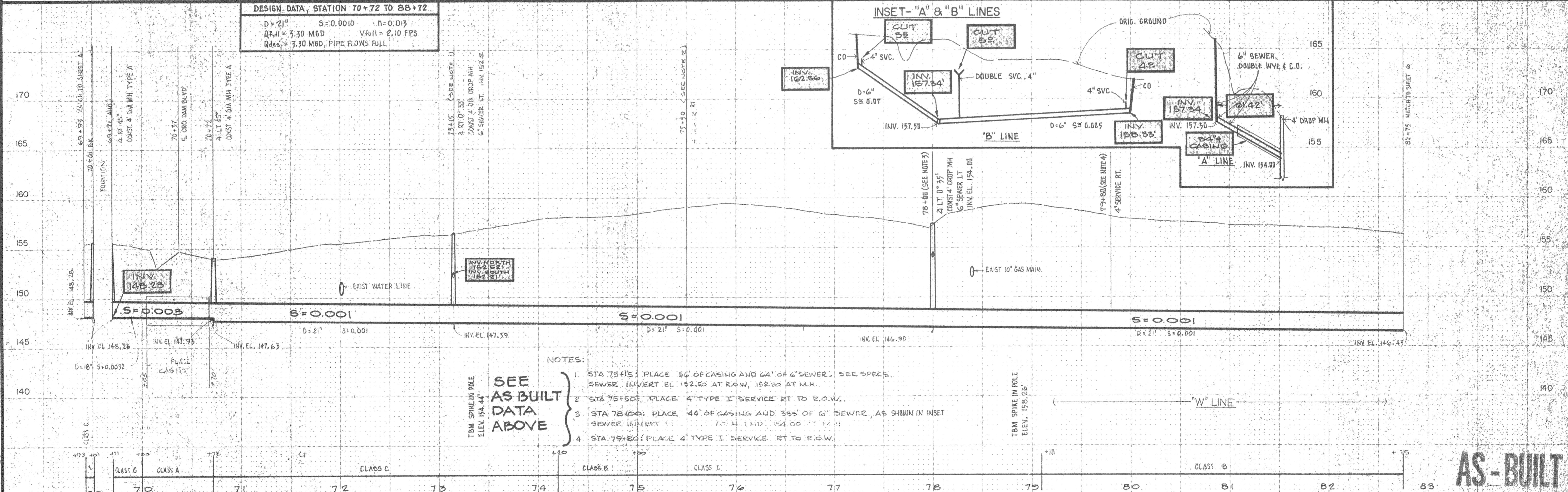
THE EXISTENCE AND LOCATION OF ALL UTILITIES SHALL BE VERIFIED BY THE CONTRACTOR



AS BUILT DATA

AS BUILT DATA

DESIGN DATA, STATION 70+72 TO 88+72
 D=21" S=0.0010 n=0.013
 Q_{Full} = 3.30 MGD V_{Full} = 2.10 FPS
 Q_{des} = 3.30 MGD, PIPE FLOWS FULL



- NOTES:
1. STA 78+15: PLACE 54' OF CASING AND 64' OF 6" SEWER. SEE SPECS. SEWER INVERT EL 152.50 AT ROW, 152.20 AT M.H.
 2. STA 75+50: PLACE A" TYPE I SERVICE RT TO R.O.W.
 3. STA 78+00: PLACE 44' OF CASING AND 335' OF 6" SEWER, AS SHOWN IN INSET SEWER INVERT EL 154.00 AT M.H.
 4. STA 79+80: PLACE 4" TYPE I SERVICE RT TO R.O.W.

SEE AS BUILT DATA ABOVE

AS-BUILT

RINGEL & ASSOCIATES, INC



DES. EAR					
DR. W.K.J., G.B.					
CHK. G.B., W.K.J.					
APPD. <i>[Signature]</i>	NO.	DATE	REVISION	BY	APPD.

"W" LINE

SEWERAGE COMMISSION,
 OROVILLE REGION
 OROVILLE, CALIFORNIA

PLAN AND PROFILE
 SC-OR WEST INTERCEPTOR

AS-BUILT

SHEET
 5 OF 20
 DATE AUG. 1, 1974
 PROJ. 2316