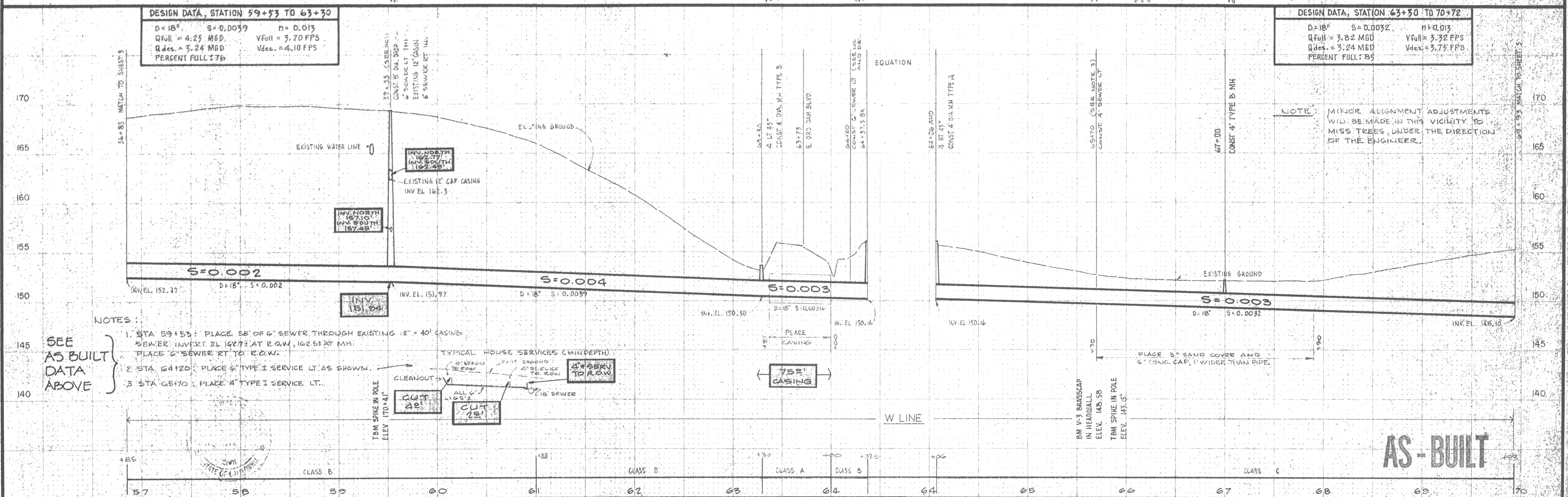


**AS BUILT DATA**

**AS BUILT DATA**



**DESIGN DATA, STATION 59+53 TO 63+30**  
 D=18" S=0.0039 n=0.013  
 Q<sub>Full</sub> = 4.25 MGD V<sub>Full</sub> = 3.70 FPS  
 Q<sub>Des.</sub> = 3.24 MGD V<sub>Des.</sub> = 4.10 FPS  
 PERCENT FULL: 76

**DESIGN DATA, STATION 63+30 TO 70+72**  
 D=18" S=0.0032 n=0.013  
 Q<sub>Full</sub> = 3.82 MGD V<sub>Full</sub> = 3.32 FPS  
 Q<sub>Des.</sub> = 3.24 MGD V<sub>Des.</sub> = 3.75 FPS  
 PERCENT FULL: 85

- NOTES:**
- STA 59+53: PLACE 58' OF 6" SEWER THROUGH EXISTING 12" x 40" CASING. SEWER INVERT EL 162.73 AT R.O.W., 162.51 AT MH. PLACE 6" SEWER RT TO R.O.W.
  - STA 64+20: PLACE 6" TYPE I SERVICE LT. AS SHOWN.
  - STA 65+70: PLACE 4" TYPE I SERVICE LT.

**NOTE:** MINOR ALIGNMENT ADJUSTMENTS WILL BE MADE IN THIS VICINITY TO MISS TREES UNDER THE DIRECTION OF THE ENGINEER.

SEE AS BUILT DATA ABOVE

**AS-BUILT**

**AS-BUILT**

RINGEL & ASSOCIATES, INC		DES. E.A.R.			
DR. W.H.J., G.B.					
CHK. G.B., W.H.J.					
APPD. <i>[Signature]</i>	NO.	DATE	REVISION	BY	APPD.

"W" LINE

SEWERAGE COMMISSION,  
 OROVILLE REGION  
 OROVILLE, CALIFORNIA

PLAN AND PROFILE  
**SC-OR WEST INTERCEPTOR**

SHEET  
 4 OF 20  
 DATE AUG. 1, 1974  
 PROJ. 2316