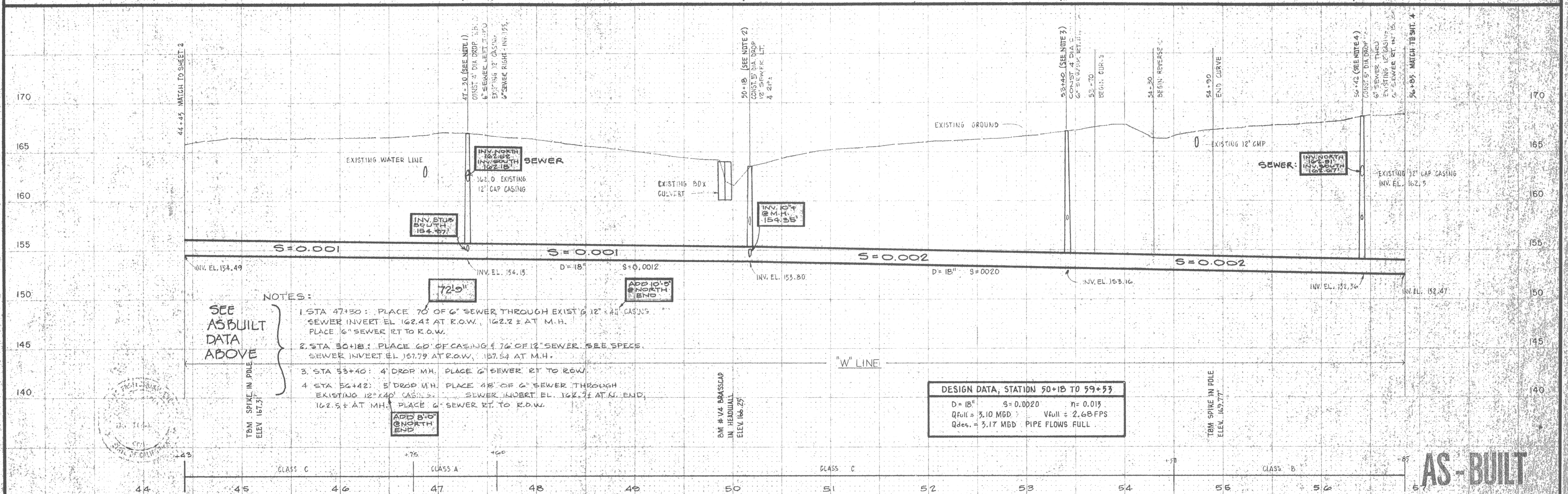


AS BUILT DATA

AS BUILT DATA



SEE AS-BUILT DATA ABOVE

- NOTES:
1. STA 47+30: PLACE 70' OF 6" SEWER THROUGH EXIST'G 12" x 40" CASING. SEWER INVERT EL 162.42 AT R.O.W., 162.22 ± AT M.H. PLACE 16" SEWER RT TO R.O.W.
 2. STA 50+18: PLACE 60' OF CASING & 70' OF 12" SEWER. SEE SPECS. SEWER INVERT EL 157.79 AT R.O.W., 157.54 AT M.H.
 3. STA 53+40: 4' DROP M.H. PLACE 6" SEWER RT TO R.O.W.
 4. STA 56+42: 5' DROP M.H. PLACE 48' OF 6" SEWER THROUGH EXISTING 12" x 40" CASING. SEWER INVERT EL 162.71 AT N. END, 162.5 ± AT M.H. PLACE 6" SEWER RT TO R.O.W.

DESIGN DATA, STATION 50+18 TO 59+53
 D = 18" S = 0.0020 n = 0.013
 Q_{full} = 3.10 MGD V_{full} = 2.68 FPS
 Q_{des.} = 3.17 MGD PIPE FLOWS FULL

AS-BUILT	RINGEL & ASSOCIATES, INC		DES. EAR			"W" LINE	SEWERAGE COMMISSION,		PLAN AND PROFILE		SHEET 3 OF 20
			DR. W.K.J., G.B.				OROVILLE REGION		SC-OR WEST INTERCEPTOR		
			CHK. G.B., W.K.J.			OROVILLE, CALIFORNIA				PROJ. 2316	
			APPD. <i>[Signature]</i>	NO.	DATE	REVISION	BY	APPD.			