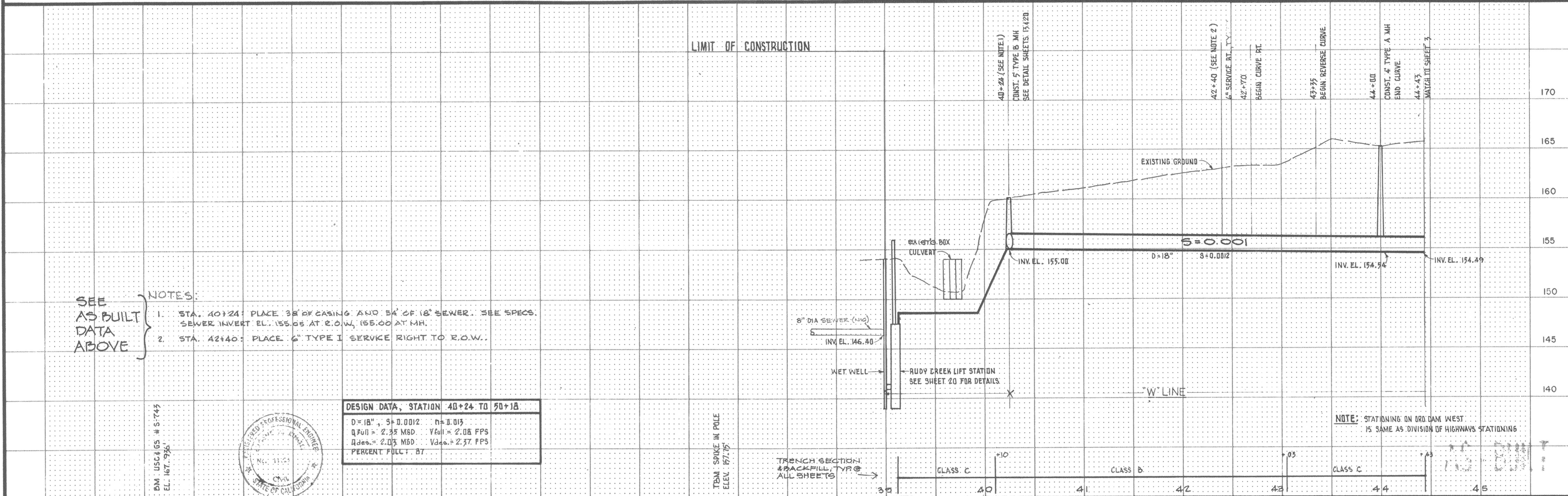


THE EXISTENCE AND LOCATION OF ALL UTILITIES SHALL BE VERIFIED BY THE CONTRACTOR.

AS BUILT DATA

AS BUILT DATA



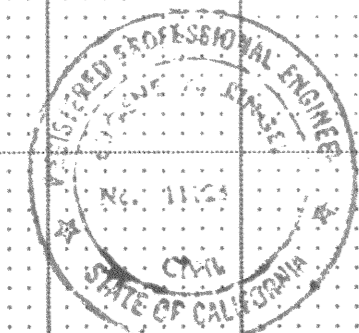
SEE AS BUILT DATA ABOVE

NOTES:

1. STA. 40+24: PLACE 38' OF CASING AND 54' OF 18" SEWER. SEE SPECS. SEWER INVERT EL. 155.05 AT 2.0 W, 155.00 AT M.H.
2. STA. 42+40: PLACE 6" TYPE I SERVICE RIGHT TO R.O.W.

DESIGN DATA, STATION 40+24 TO 50+18			
D = 18"	S = 0.0012	n = 0.013	
Q _{full} = 2.35 MGD	V _{full} = 2.08 FPS		
Q _{des.} = 2.03 MGD	V _{des.} = 2.37 FPS		
PERCENT FULL:	87		

BM USC165 # S 743
EL. 147.945



TRM. SPIKE IN POLE
ELEV. 87.75

TRENCH SECTION & BACKFILL, TYP @ ALL SHEETS

NOTE: STATIONING ON ORO DAM WEST IS SAME AS DIVISION OF HIGHWAYS STATIONING

	RINGEL & ASSOCIATES, INC	DES. E.A.R.		RUDY CREEK LIFT STATION; "W" LINE	SEWERAGE COMMISSION, OROVILLE REGION OROVILLE, CALIFORNIA	PLAN AND PROFILE SC-OR WEST INTERCEPTOR	SHEET 2 OF 20
		DR. W.K.J., G.B. CHK. G.B., W.K.J. APPD. <i>[Signature]</i>	NO. DATE REVISION BY APPD.				DATE AUG. 1, 1974 PROJ. 2316 NO.