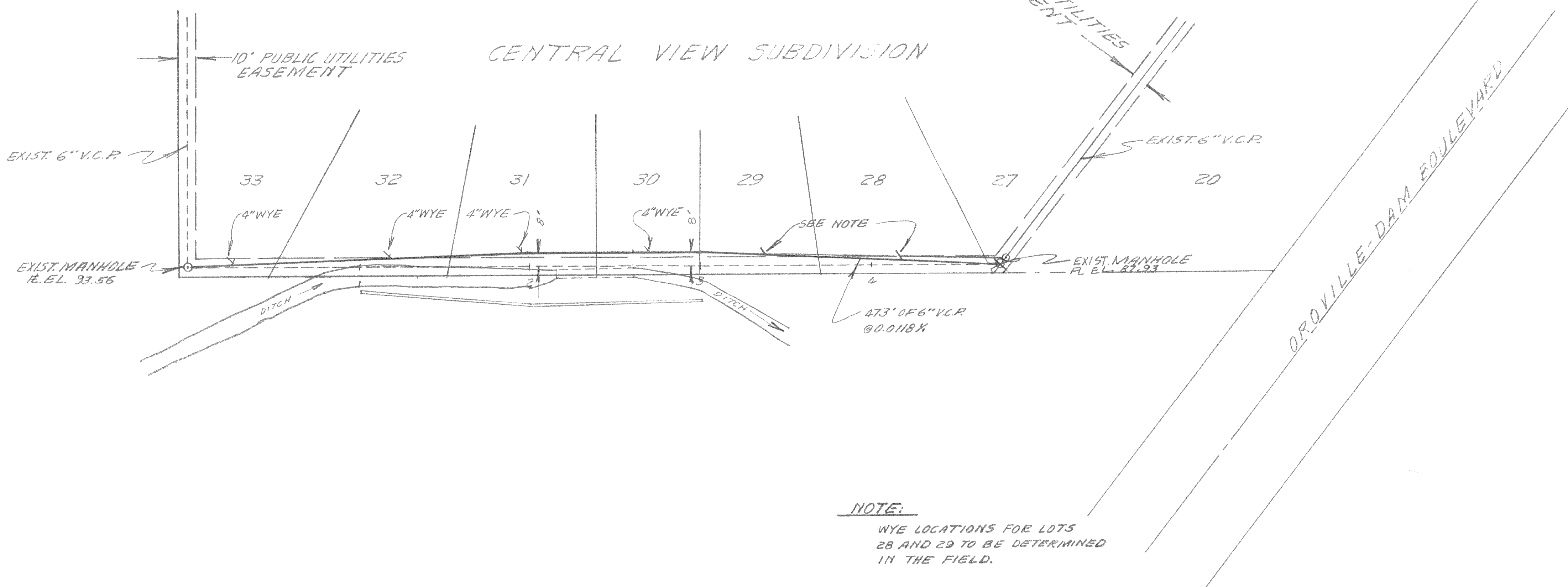


SCALE 1"=40'

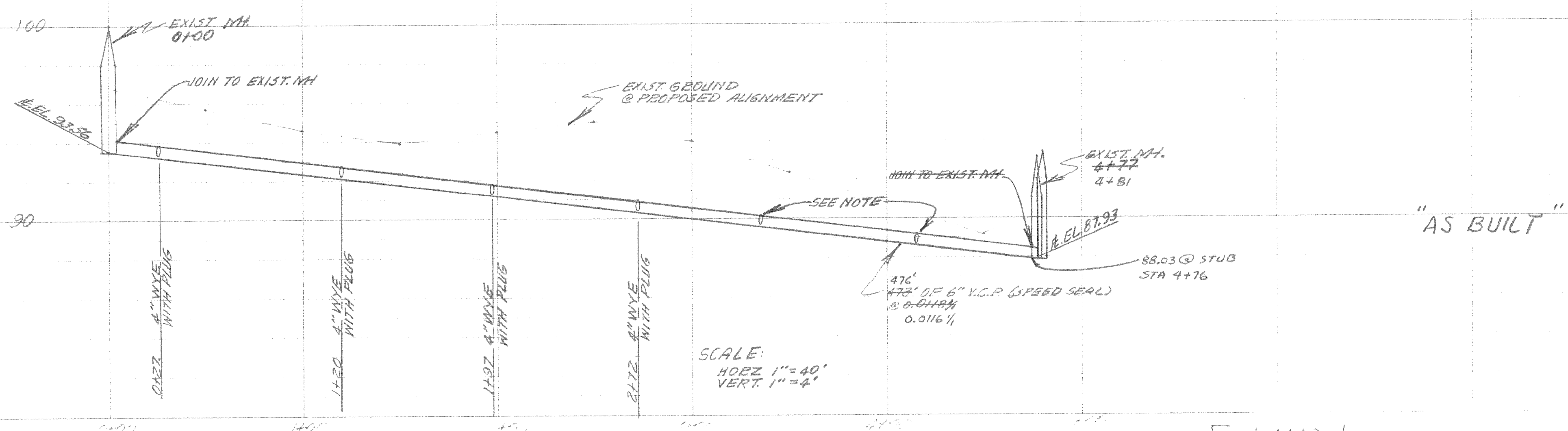


NOTE:
 WYE LOCATIONS FOR LOTS 28 AND 29 TO BE DETERMINED IN THE FIELD.

QUANTITY AND COST ESTIMATE

1. 468' OF 6" V.C.P. @ \$0.91 Per Ft. =	\$ 425.88
2. 6 - 4"x6" WYES @ \$4.53 Ea. =	27.18
3. 4 - 4" PLUGS @ \$0.60 Ea. =	2.40
4. RECHANNEL MANHOLES @ LUMP SUM =	150.00
5. SAND FOR BACKFILL 106 Cu yd. @ \$1.25 Per yd. =	132.50
TOTAL	\$ 737.96

SAY \$740.00



SCALE:
 HORIZ 1"=40'
 VERT. 1"=4'

FAY WAY
 SANITARY SEWER REALIGNMENT
 CENTRAL VIEW SUBDIVISION, LINE 'D'
 SABRE APARTMENTS 1971±