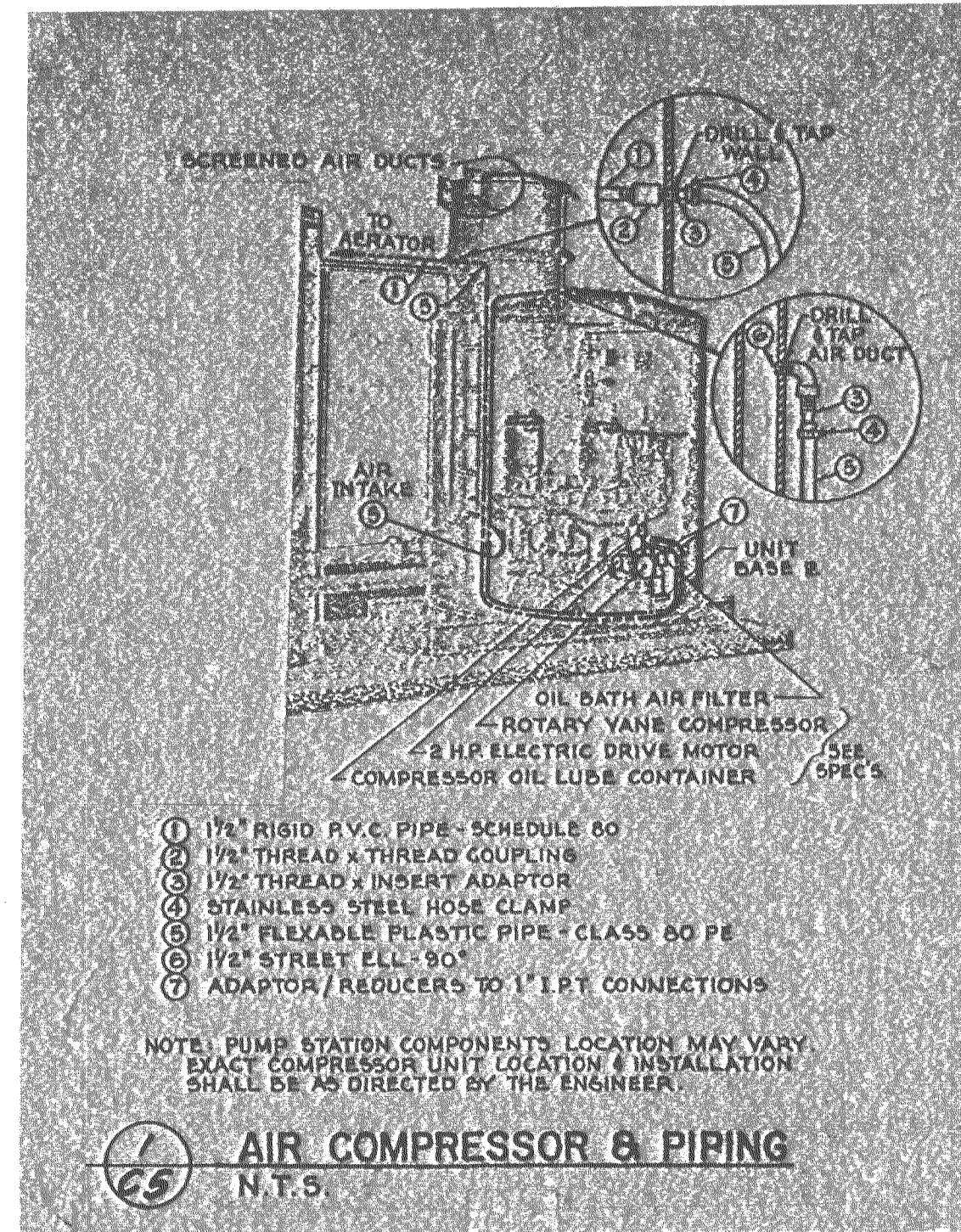


ANCHOR WET WELL W/ 8-#4 x 8" BARS DRILLED & GROUTED AT INTO WETWELL BASE, 8-#4 x 2'-9" VERTICAL BARS EXTENDING 1' OUT OF SLAB. SPACE AT 3' GALN. SIDE & 5' SA. END. CONC. GROUT. AROUND ENTIRE WETWELL & STATION.

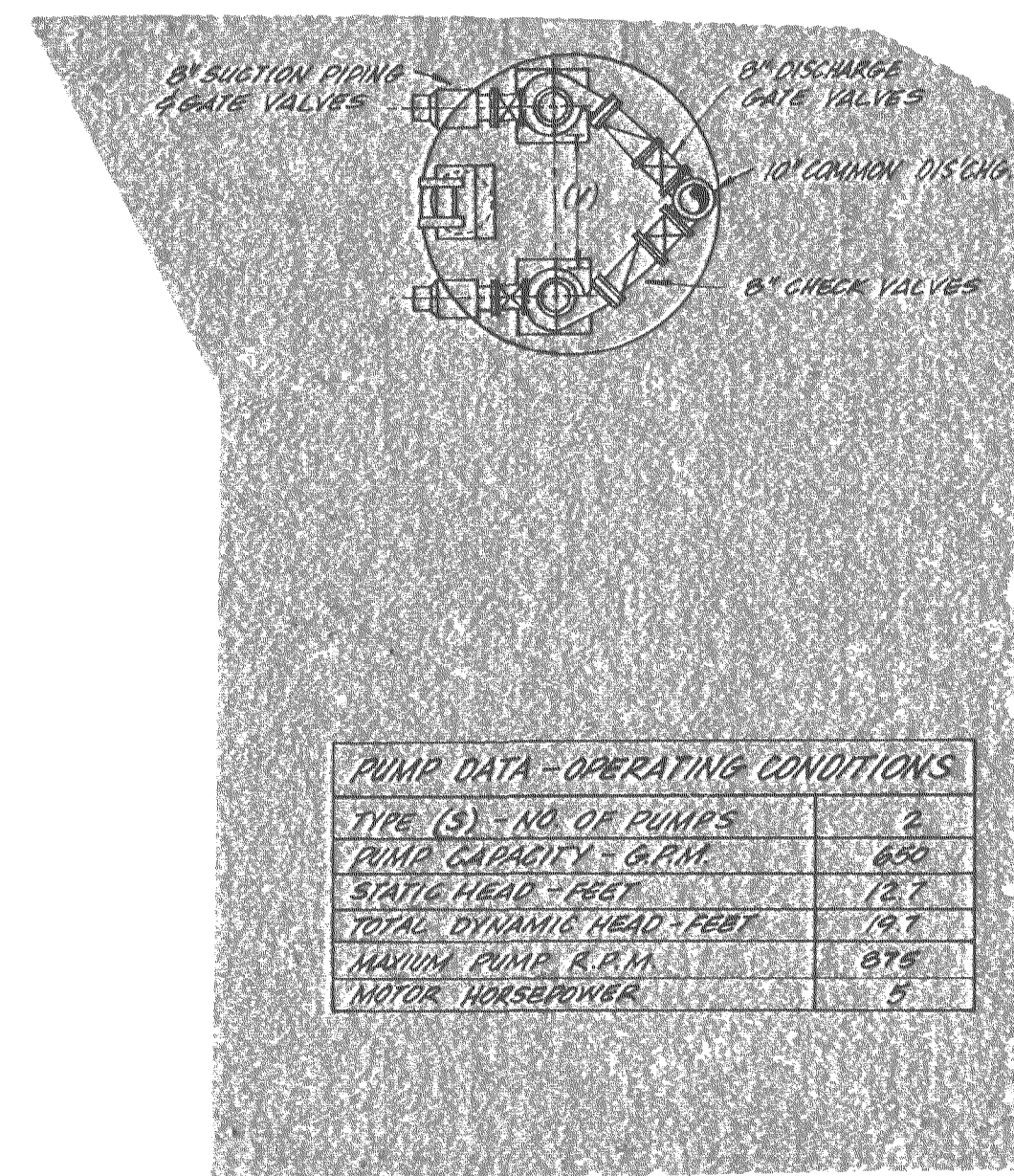
NOTE: EAST IS INFLUENT = 156.50



- ① 1 1/2" RIGID P.V.C. PIPE - SCHEDULE 80
- ② 1 1/2" THREAD x THREAD COUPLING
- ③ 1 1/2" THREAD x INSERT ADAPTOR
- ④ STAINLESS STEEL HOSE CLAMP
- ⑤ 1 1/2" FLEXIBLE PLASTIC PIPE - CLASS 50 PE
- ⑥ 1 1/2" STREET ELL - 90°
- ⑦ ADAPTOR/REDUCERS TO 1" IRT CONNECTIONS

NOTE: PUMP STATION COMPONENTS LOCATION MAY VARY. EXACT COMPRESSOR UNIT LOCATION & INSTALLATION SHALL BE AS DIRECTED BY THE ENGINEER.

AIR COMPRESSOR & PIPING
N.T.S.

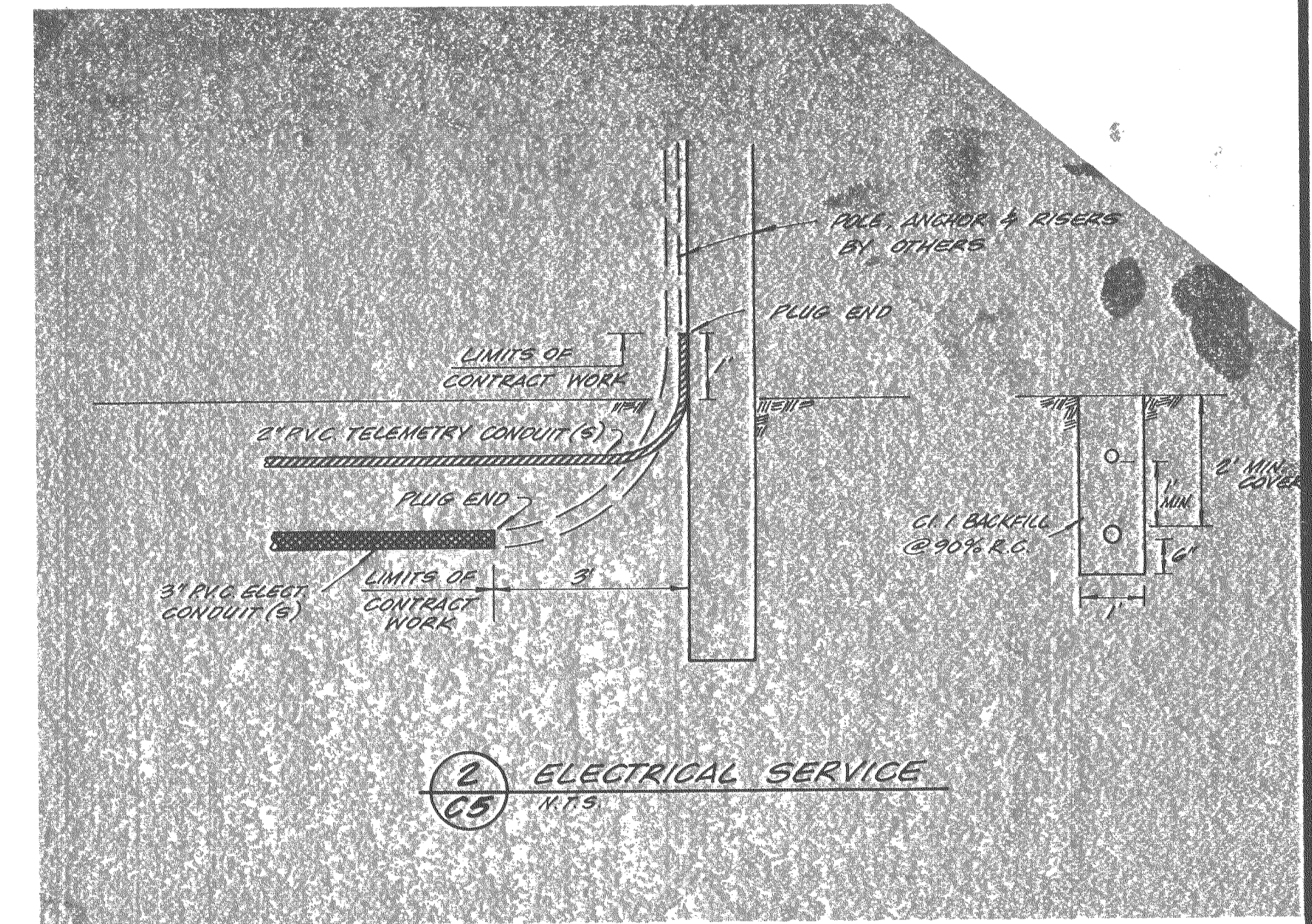


PUMP DATA - OPERATING CONDITIONS

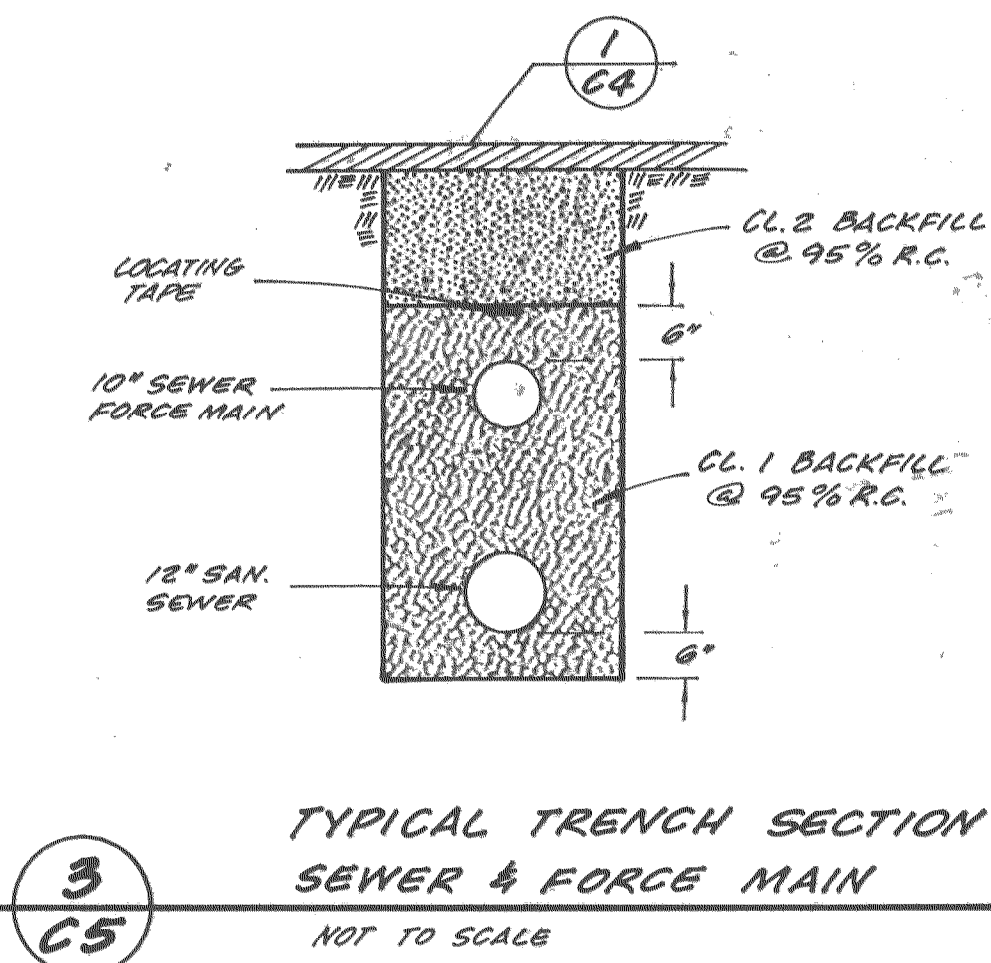
| | |
|---------------------------|------|
| TYPE (S) - NO. OF PUMPS | 2 |
| PUMP CAPACITY - G.P.M. | 600 |
| STATIC HEAD - FEET | 15.7 |
| TOTAL DYNAMIC HEAD - FEET | 16.1 |
| MANUFACTURER | 87E |
| MOTOR HORSEPOWER | 5 |

- LEGEND**
- (1) SEE PLANS FOR LOCATION
 - (S) SEE SPECIFICATIONS
 - (V) VARIES WITH MANUFACTURER (SEE NOTE ①)

- NOTES**
- ① ALL DIMENSIONS SHOWN ARE MINIMUM
 - ② ALL WETWELL CONSTRUCTION SHALL CONFORM TO THE REQUIREMENTS FOR MANHOLE CONST. (S)
 - ③ STRUCTURE EXCAVATION AND BACKFILL INCLUDING PUMP STATION SHALL EQUAL THAT IS REQUIRED FOR MANHOLE CONSTRUCTION (S)
 - ④ ELEC. SERVICE SHALL CONFORM TO F.G.A.B. REQUIREMENTS AND ALL APPLICABLE CODES.
 - ⑤ SEE ELECTRICAL DETAILS, SHEET E-
 - ⑥ PROVIDE COUPLINGS IN SUCTION PIPING - DRESSER STYLE 30 OR EQUAL FOR 8" CAST IRON PIPE
 - ⑦ AERATOR PIPING TO BE RIGID P.V.C. PIPE SCARFOUR 80 WITH PIPE 1" THREAD x THREAD FITTINGS SHALL BE WITH PIPE 1" THREAD x THREAD VALVE ASSEMBLY AS SHOWN - 701-010 OR EQUAL



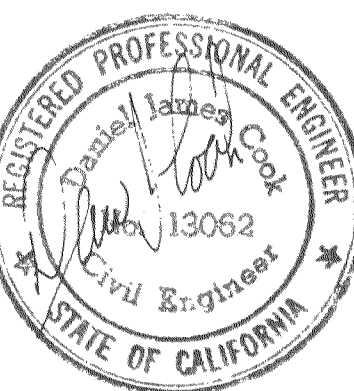
ELECTRICAL SERVICE
N.T.S.



TYPICAL TRENCH SECTION
SEWER & FORCE MAIN
NOT TO SCALE

COOK ASSOCIATES
ENGINEERING CONSULTANTS
2080 PARK AVENUE, OROVILLE, CALIFORNIA 95965

CITY OF OROVILLE
Industrial Unit No. 2
E.D.A. PROJECT NO. 07-01-02169
DUPLEX SEWAGE PUMPING STATION DETAILS



| REVISION | DATE |
|----------|------|
| | |
| | |
| | |

S. JACKSON 1/80
DRAWN DATE 1/80
D.I.C. 1/80
APPROVED DATE 1/80
FILE NO. A-361

SHEET NO. C5
OF 27 SHTS
JOB NO. 79457

AS BUILT 7/6/81