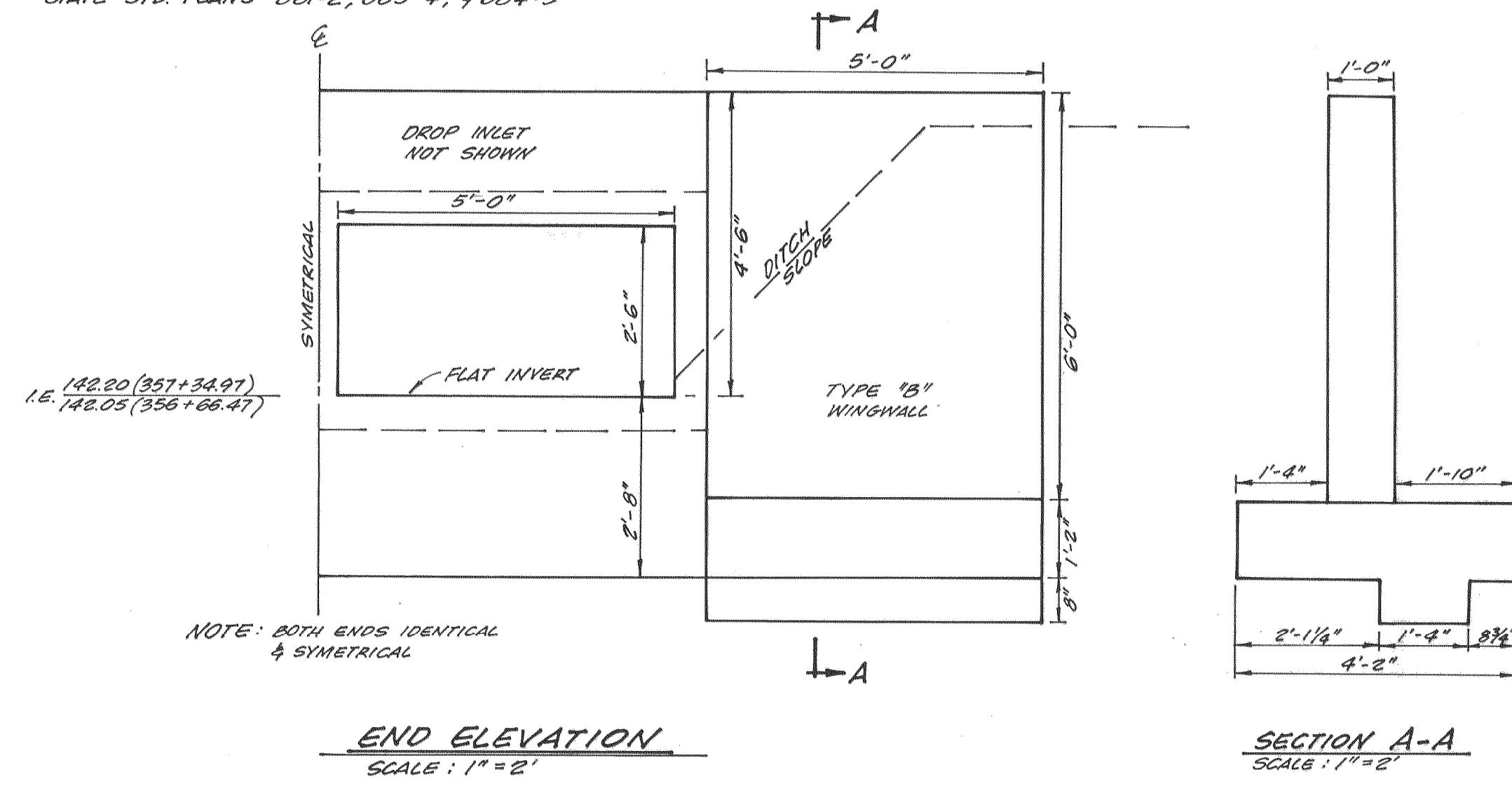
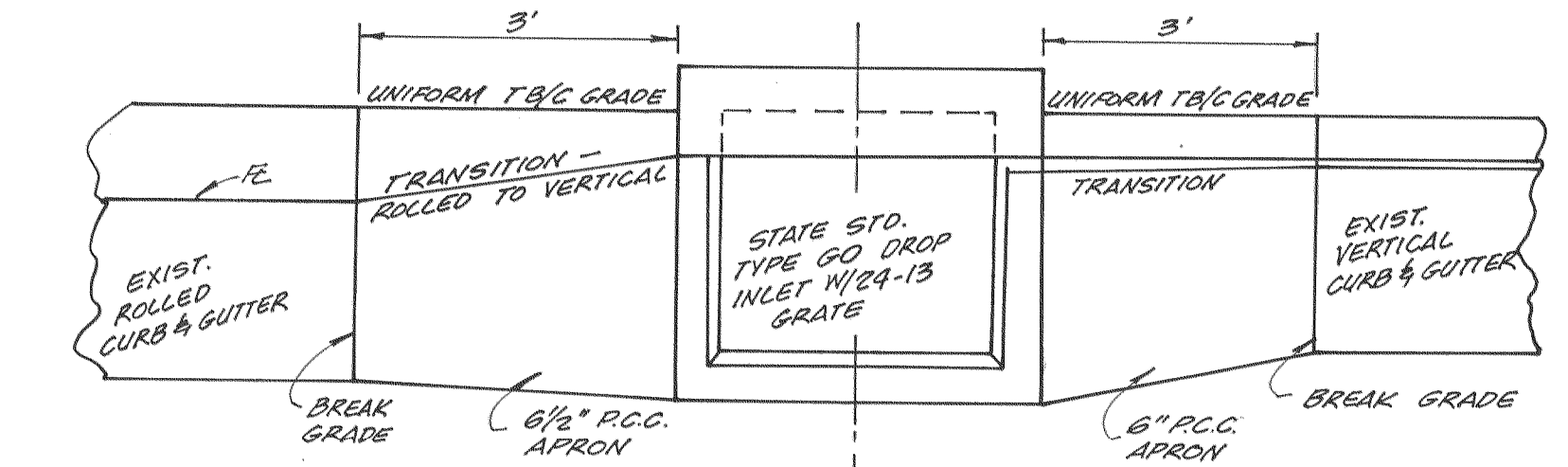
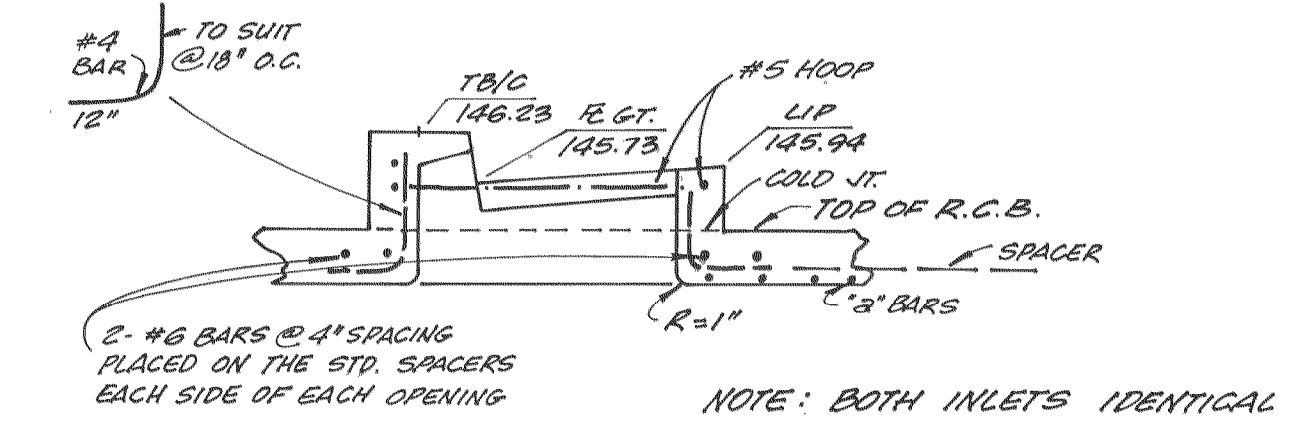
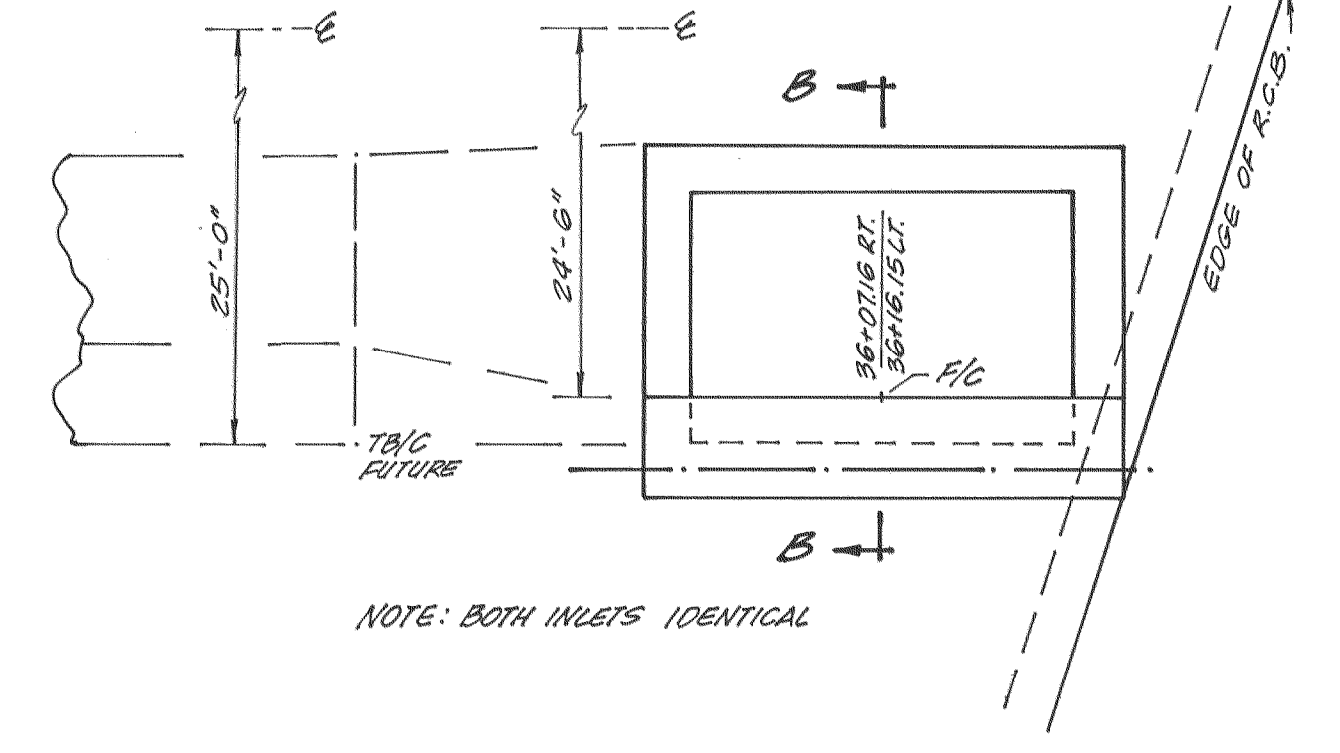


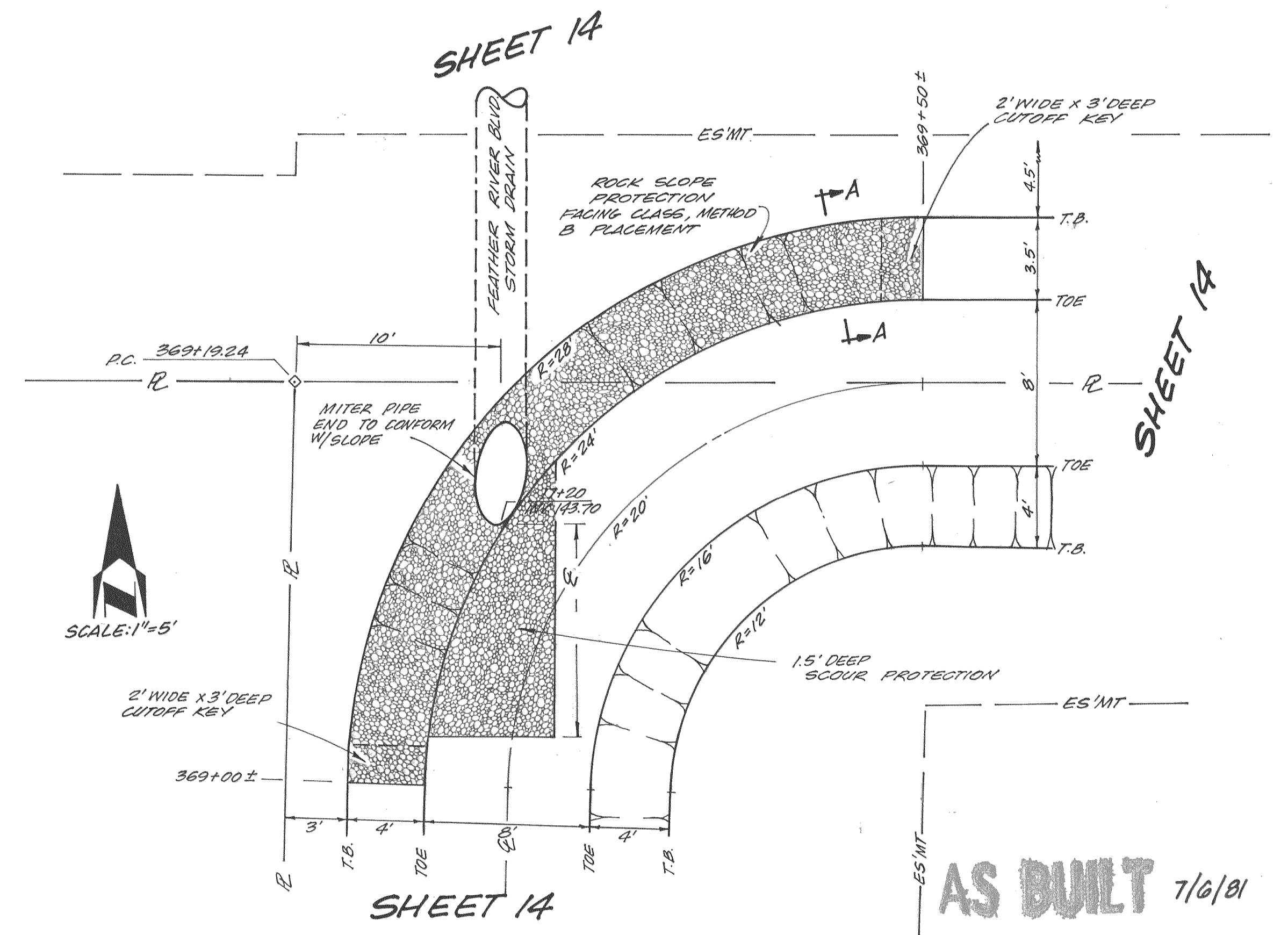
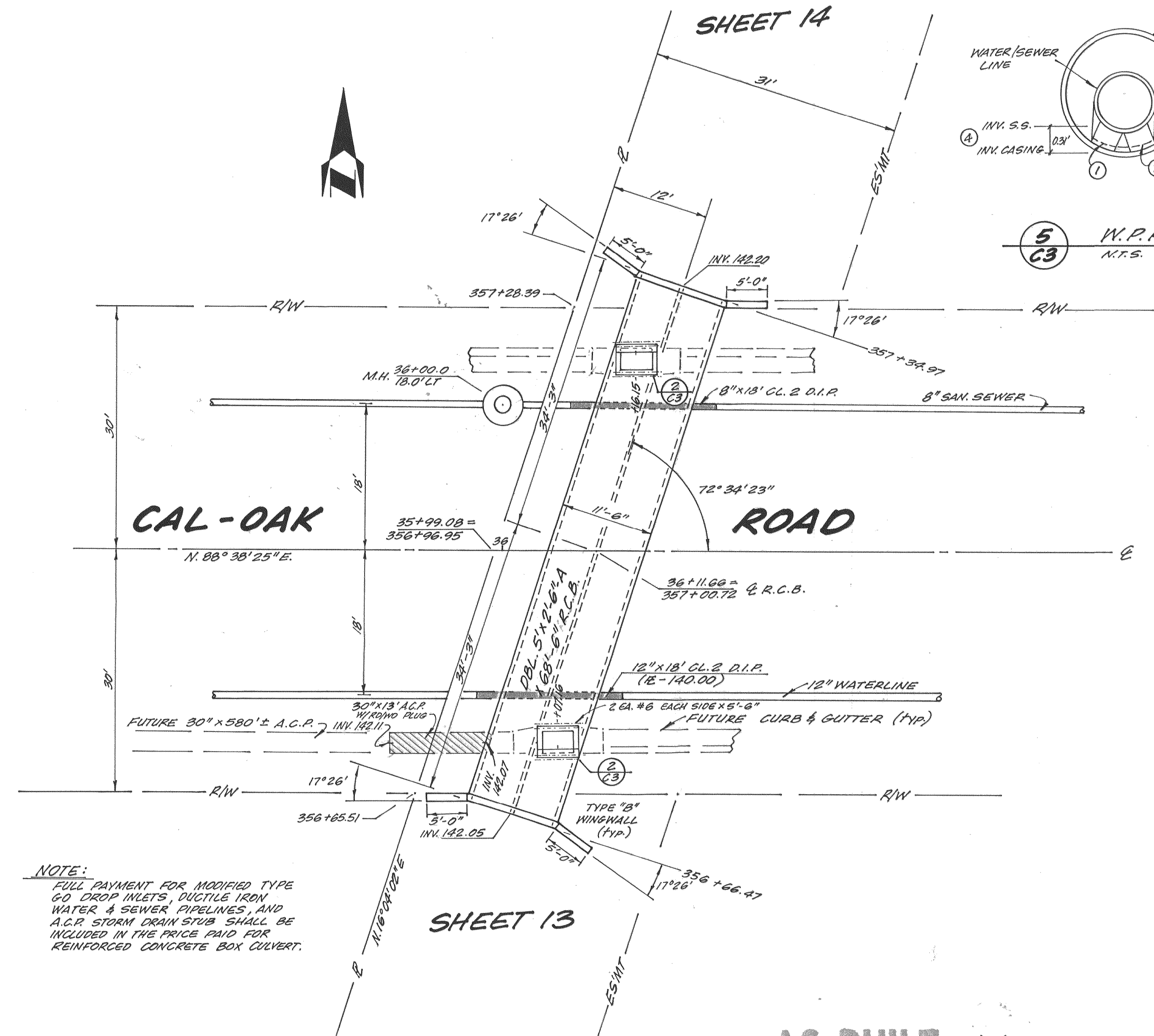
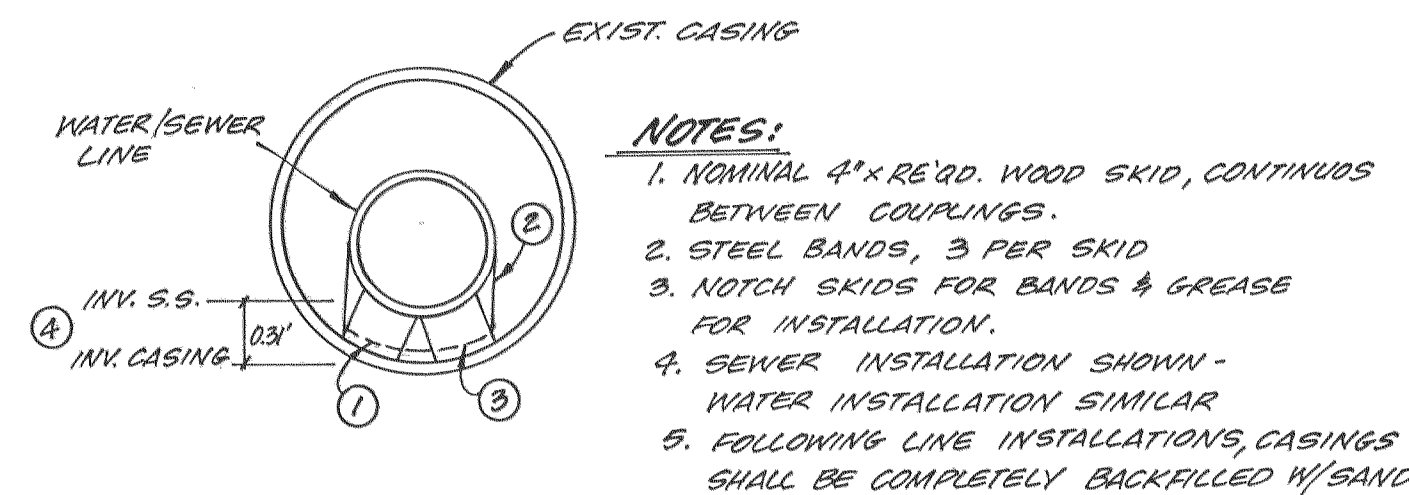
FOR BOX CULVERT, END WALL, AND WINGWALL DETAILS SEE JAN. 1975 STATE STD. PLANS DB-2, DB-4, & DB-4-B



NOTE: FOR D.I. & GRATE DIMENSIONS AND DETAILS SEE MAR. 1977 STATE STD. PLANS D7A-1A (TYPE G.O. D.I.) D77-A-2 & D77-B-4 (24-13 GT.)



- NOTES:
- FOR D.I. & GRATE DIMENSIONS AND DETAILS SEE MAR. 1977 STATE STD. PLANS D7A-1A (TYPE G.O. D.I.) D77-A-2 & D77-B-4 (24-13 GT.)
  - APRONS TO BE CONST. ONLY WHERE SHOWN ON THE PLANS.
  - ELEV. OF TOP OF D.I. TO BE UNIFORM WITH ADJACENT TOP BACK OF CURB GRADE.
  - 1/4" T&G TO BE GRATE ADJACENT TO VERTICAL CURB & GUTTER = 0.50' - ADJACENT TO ROLLED CURB & GUTTER = 0.50'.
  - FULL PAYMENT FOR APRONS WHERE REQ'D. INCLUDED IN THE PRICE PAID FOR DROP INLET.
  - PLAN REFERENCE DIMENSION = C STREET TO T.B./C.



**COOK ASSOCIATES**  
ENGINEERING CONSULTANTS  
2060 PARK AVENUE, OROVILLE, CALIFORNIA 95965

CITY OF OROVILLE  
Industrial Unit No. 2  
E.D.A. PROJECT NO. 07-01-02169  
MISCELLANEOUS STRUCTURES

REGISTERED PROFESSIONAL ENGINEER  
Cook Associates  
No. 13062  
Civil & Structural  
STATE OF CALIFORNIA

REVISION	DATE

S. JACKSON, II  
DRAWN DATE  
D.L.C.  
APPROVED DATE  
A-361  
FILE NO.

SHEET NO. C3  
JOB NO. 79457  
OF 27 SHTS