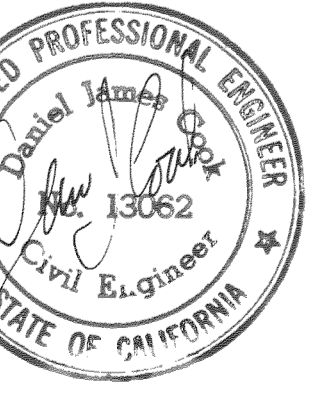


COOK ASSOCIATES
ENGINEERING CONSULTANTS
 2060 PARK AVENUE, OROVILLE, CALIFORNIA 95965

CITY OF OROVILLE
 Industrial Unit No. 2
 E.D.A. PROJECT NO. 07-01-02169
 FEATHER RIVER BOULEVARD



REVISION	DATE

DK 45JW
 DRAWN DATE
 P.L.C. 11/79
 APPROVED DATE
A-361
 FILE NO.
 SHEET NO.
9
 OF 27 SHTS
 JOB NO.
 79457

SS 292

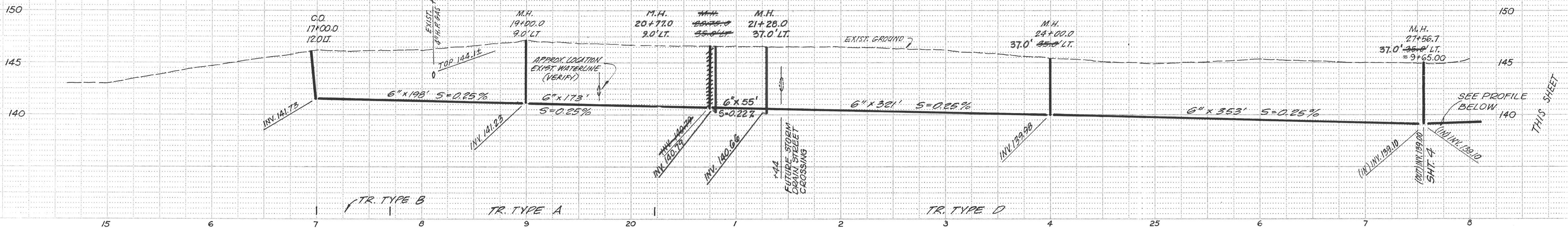
THE EXISTENCE AND LOCATION OF ALL UTILITIES SHALL BE VERIFIED BY THE CONTRACTOR.

B.M. \star ELEV = 147.49
 SET R.R. SPIKE IN J.P.
 25' RT. OF STA. 20+10.

B.M. \star ELEV = 146.37
 SET R.R. SPIKE IN T.P.
 20' LT. OF STA. 24+50.

AS BUILT 7/6/81

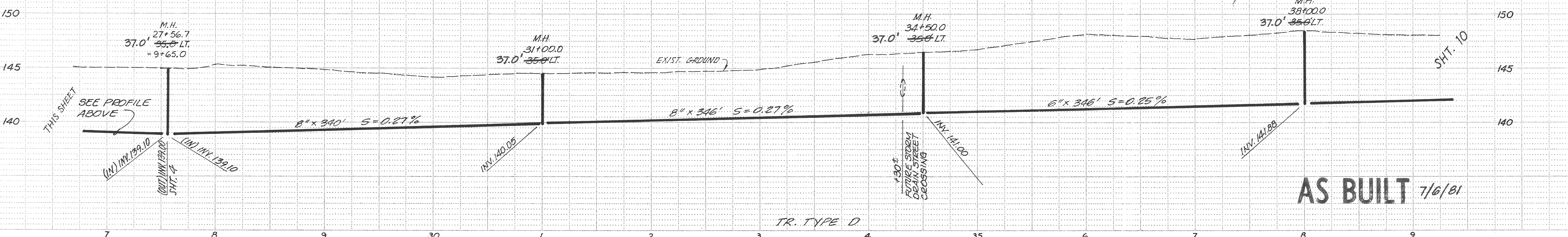
SCALE: HORIZ. 1" = 50'
 VERT. 1" = 5'



THE EXISTENCE AND LOCATION OF ALL UTILITIES SHALL BE VERIFIED BY THE CONTRACTOR.

B.M. \star ELEV = 149.48
 SET R.R. SPIKE IN P.P.
 20' LT. OF STA. 37+90.

SCALE: HORIZ. 1" = 50'
 VERT. 1" = 5'



AS BUILT 7/6/81