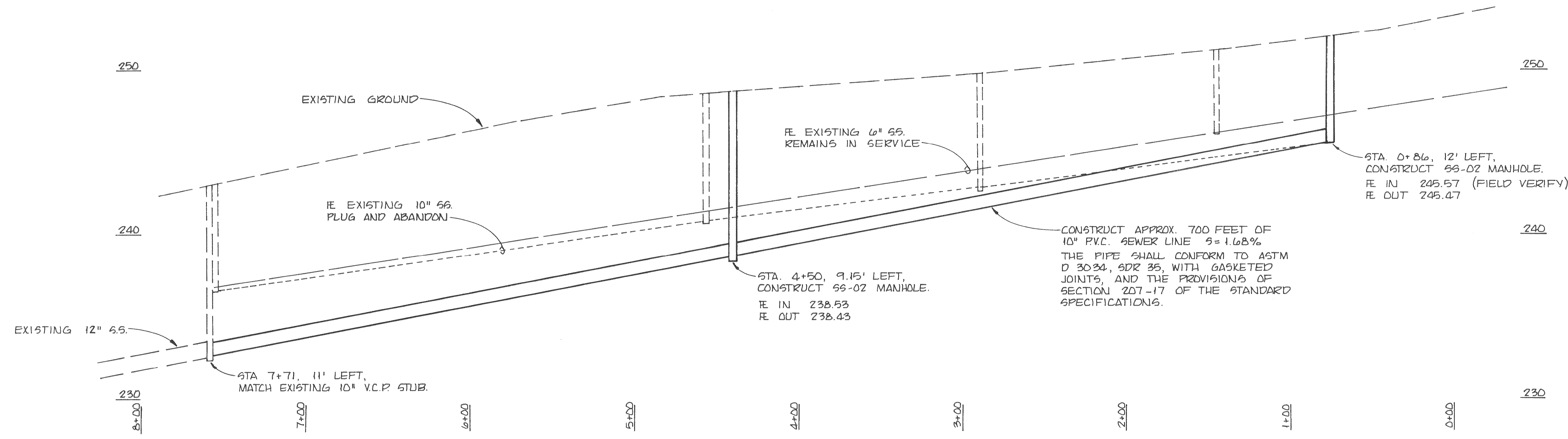
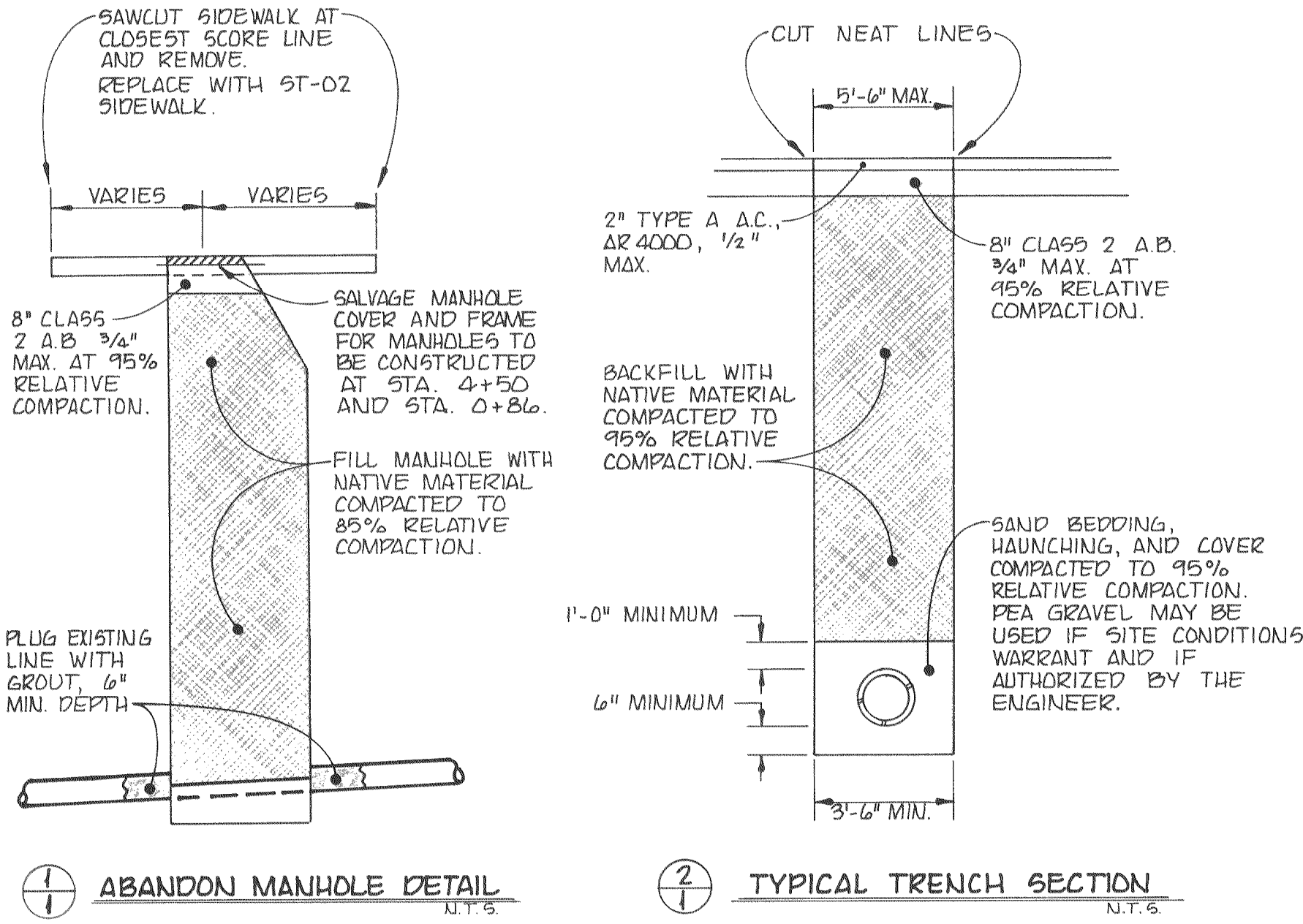


SCALES:
 VERT. 1" = 4'
 HORIZ. 1" = 40'



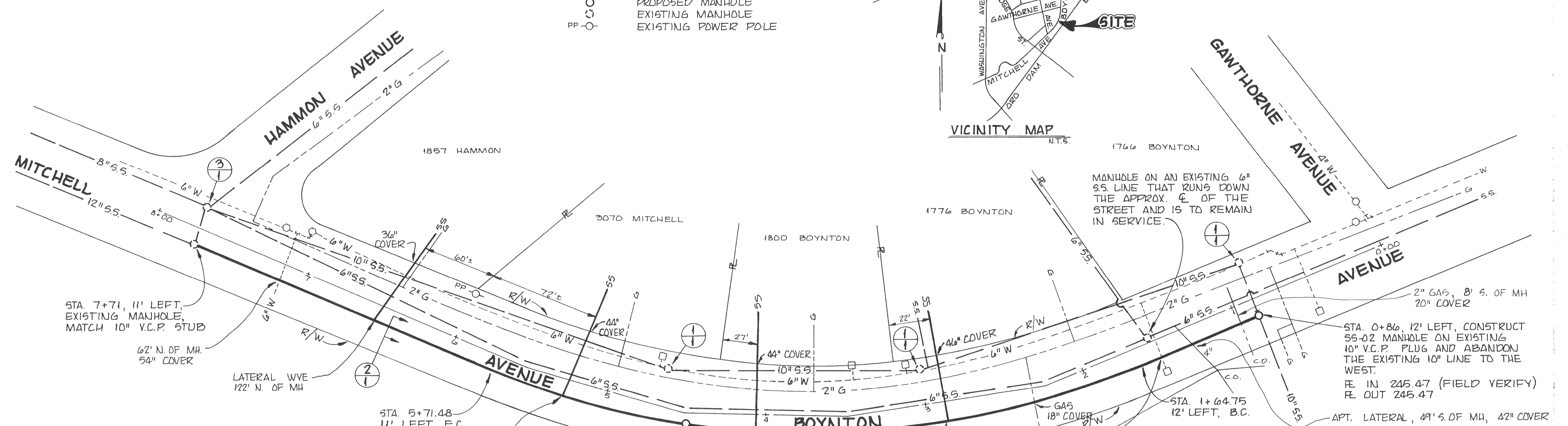
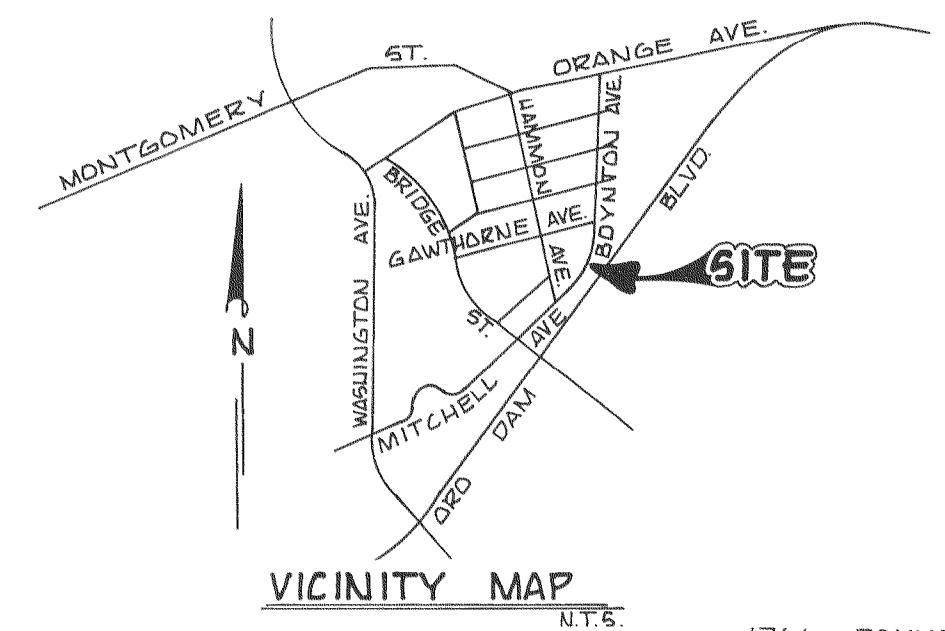
- GENERAL NOTES**
1. THE LOCATION OF EXISTING UTILITIES AS SHOWN IS FROM INFORMATION PROVIDED BY THE VARIOUS UTILITY COMPANIES. THE EXISTENCE AND LOCATION OF ALL UTILITIES SHALL BE VERIFIED BY THE CONTRACTOR.
 2. PRIOR TO ANY CONSTRUCTION, CONTACT UNDERGROUND SERVICE ALERT AT 800-642-2444 FOR INFORMATION ABOUT UNDERGROUND UTILITIES IN THE CONSTRUCTION AREA.
 3. THE CONTRACTOR IS CAUTIONED THAT A PERMIT FROM THE DIVISION OF INDUSTRIAL SAFETY IS REQUIRED PRIOR TO COMMENCING EXCAVATION OF A TRENCH GREATER THAN 5 FEET IN DEPTH.
 4. THESE PLANS ARE TO BE USED IN CONJUNCTION WITH THE STANDARD SPECIFICATIONS FOR PUBLIC WORKS CONSTRUCTION, 1982 EDITION.
 5. THE FOLLOWING ADDRESSES SHALL BE CONNECTED TO THE NEW SEWER LINE:
 1776 BOYNTON AVENUE
 1800 BOYNTON AVENUE
 3070 MITCHELL AVENUE
 1857 HAMMON AVENUE

BM No. 86 ELEVATION 251.46
 A R.R. SPIKE IN JP No. 1775 ON THE EAST SIDE OF BOYNTON AVE. ABOUT 200 FEET SOUTH OF GAWTHORNE AVE.



LEGEND

—	PROPOSED 10" SEWER LINE
- - -	EXISTING SEWER LINE
- · - · -	EXISTING WATER LINE
- · - · -	EXISTING GAS LINE
○	PROPOSED MANHOLE
○	EXISTING MANHOLE
PP-○	EXISTING POWER POLE



CITY OF OROVILLE

**BOYNTON AVENUE
 SANITARY SEWER
 REPLACEMENT**

DATE AUGUST 22, 1984	SCALE VERT. 1" = 4' HORIZ. 1" = 40'	DESIGNED BY J.V.	DRAWING NO. 65-301
APPROVED BY <i>[Signature]</i> PUBLIC WORKS DIRECTOR	CHECKED BY K.M.H.	DRAWN BY C.M. HOLLING	SHEET OF 1

AS BUILT
 1-85

SCALE: 1" = 40'